

VISUAL CORE DESCRIPTION

Cruise Gilbert

Sta. OSK

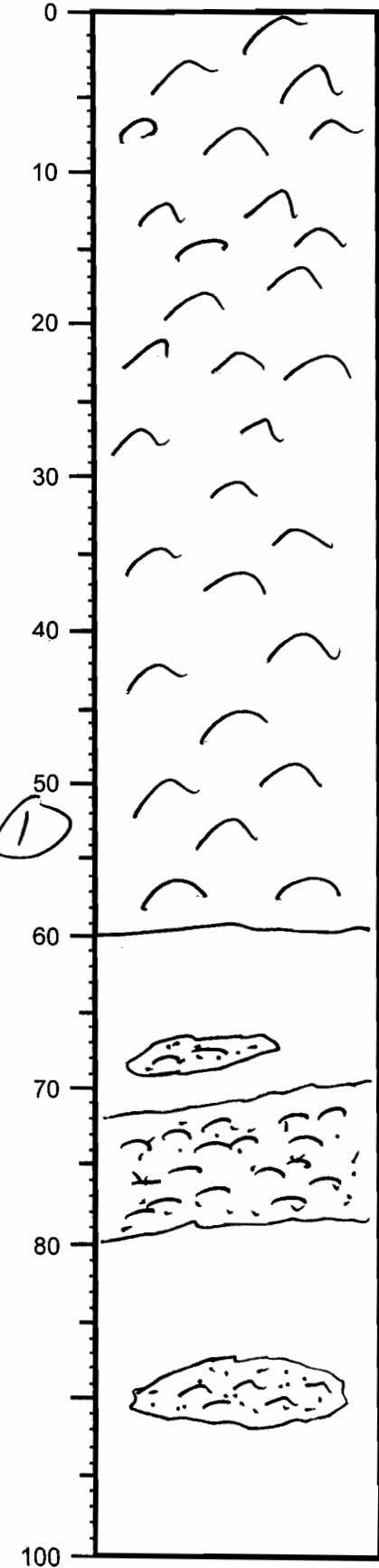
Core no App 21

Describer Twichell

Sta. Location Apalachicola Bay
Cable Lumps

Lithologic log

Detailed Description



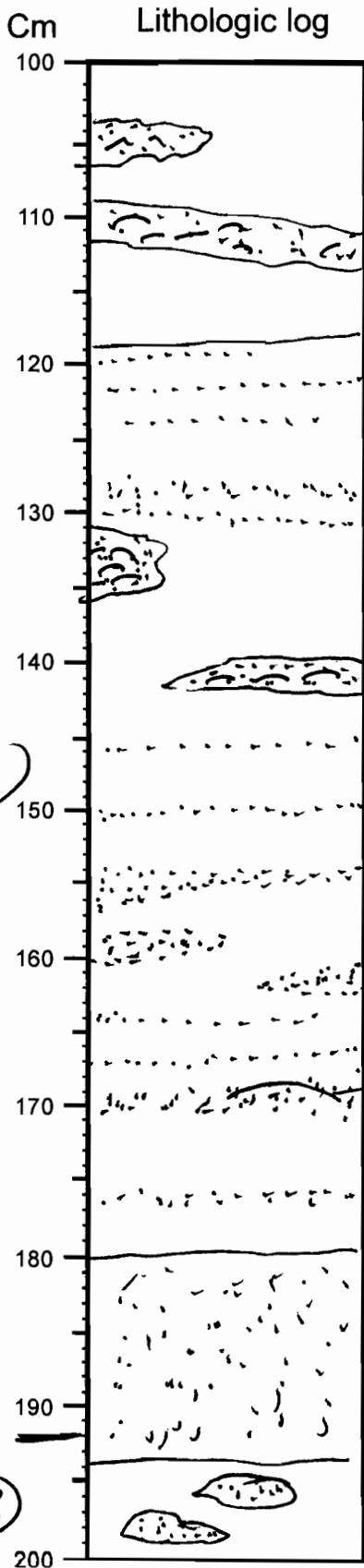
Oyster bed - Grayish green soupy
sandy mud with abundant oyster shells
shell fragments

Grayish green stiff silty clay with
extensive burrowing at the top that decreases
downward
Burrows (?) have fine ^{muddy} sand matrix

VISUAL CORE DESCRIPTION

Cruise _____ Sta. _____ Core no App 21

Describer _____ Sta. Location _____



Detailed Description

Stiff grayish green clay with some beds & burrows filled with shell hash (& whole small bivalve shells (2.5cm) + muddy sand

Greenish gray color
A thin bed of sand and stiff clay.
Sand beds are ~ 2mm at top of interval and increase to ~ 1cm towards base
Sharp contacts

large shell fragment (soft-shell clam?)

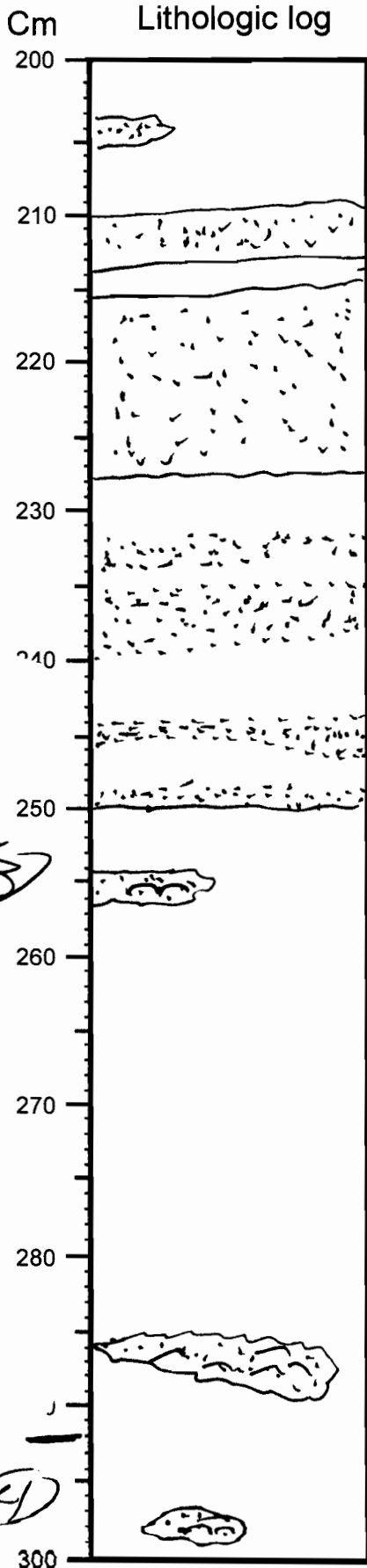
Grayish green med/coarse sand bed with fine shell hash

Stiff grayish green clay with some sand-filled burrows

VISUAL CORE DESCRIPTION

Cruise _____ Sta. _____ Core no App 21

Describer _____ Sta. Location _____



Detailed Description

Grayish green stiff clay with sand-filled burrows.

silt lam.
grayish green sand with shell hash
Medium sand

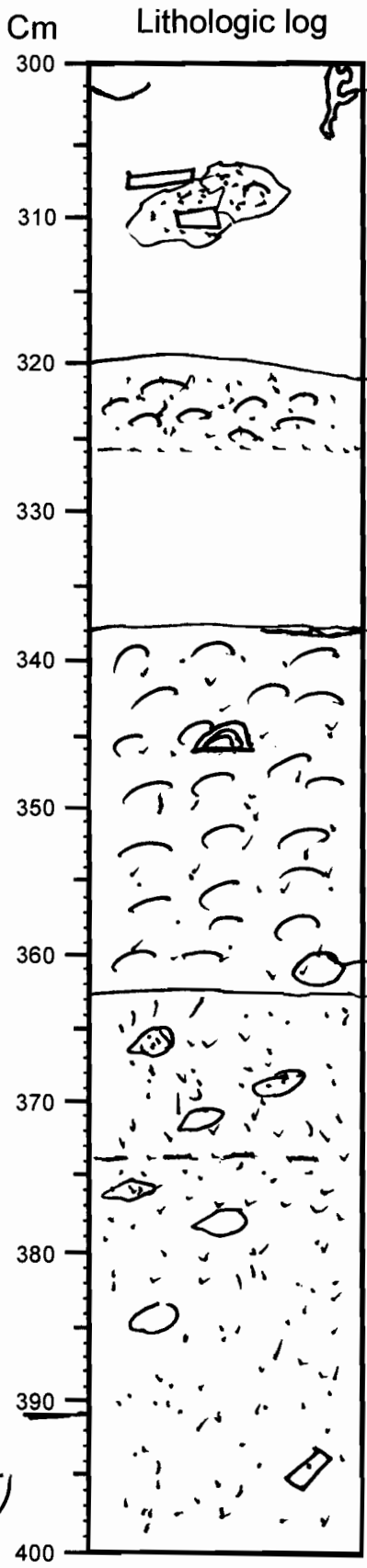
Alternating beds of clay and medium sand

Stiff greenish gray clay with no bedding & scattered sand-filled burrows (?)

VISUAL CORE DESCRIPTION

Cruise _____ Sta. _____ Core no App 21

Describer _____ Sta. Location _____



Detailed Description

looks like a small piece of coral or bone.

Stiff grayish green ~~greenish gray~~ clay

Sandy/shelly bed with gradational base - may be several burrows.

Stiff grayish green clay with scattered shell fragments of oyster shell

Shell bed - Some oyster shells (one whole one at interface (top) & some whole bivalve shells - some that have been bored.

Grayish green muddy sand matrix

small smooth clam(?) shell

Light bluish gray coarse sand with dark mottles (looks like beach sand) some mottles clay filled - no shell hash

Light brownish sand (coarse) with gradational contacts at top and bottom No shell hash.

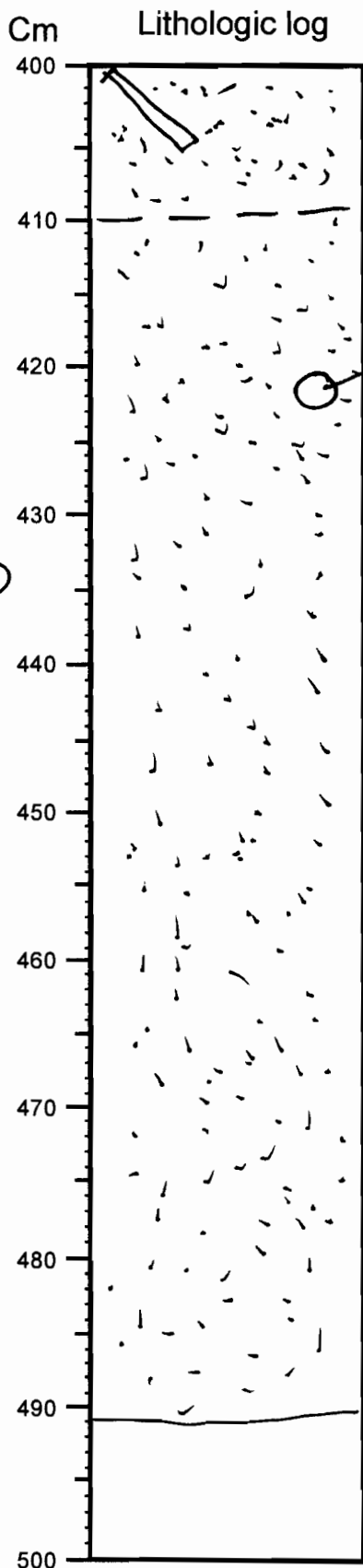
4

5

VISUAL CORE DESCRIPTION

Cruise _____ Sta. _____ Core no App 21

Describer _____ Sta. Location _____



Detailed Description

no shell hash.

Round 1cm diameter pebble like features - sandstone clast (5)

Brownish grey sand with scattered silt clasts - coarse sand.