

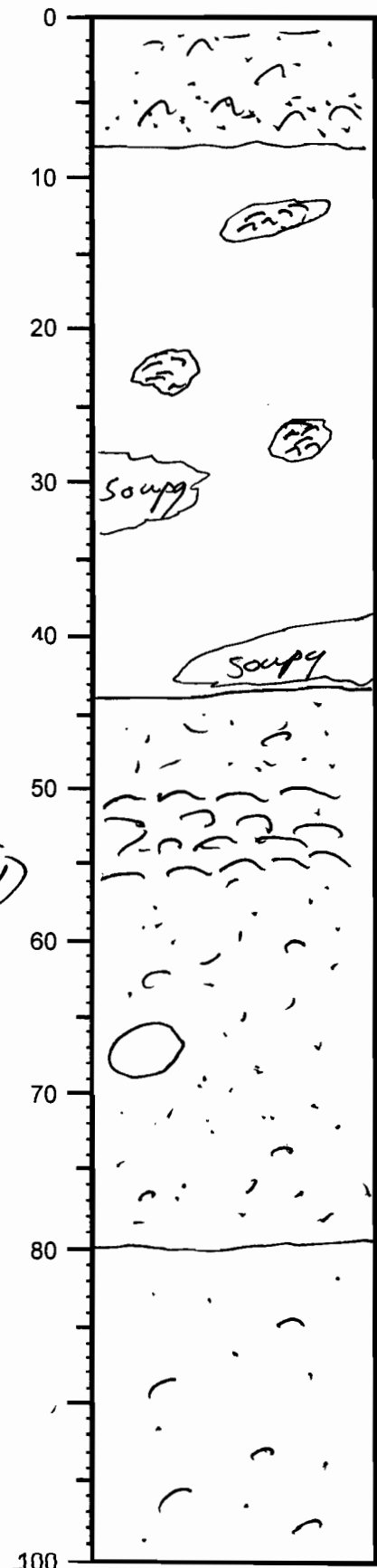
VISUAL CORE DESCRIPTION

Cruise Gilbert Sta. OSL core Core no App-23

Describer Twichell Sta. Location near St. Vincent Island

Lithologic log

Detailed Description



Olive green sandy mud with shell hash
finer at top

Light brown stiff clay with mottles that
are filled either with soupy clay or
clay with shell hash

sharp contact

Grayish green sandy (med) silt with
shell hash + fragments + one whole
shell

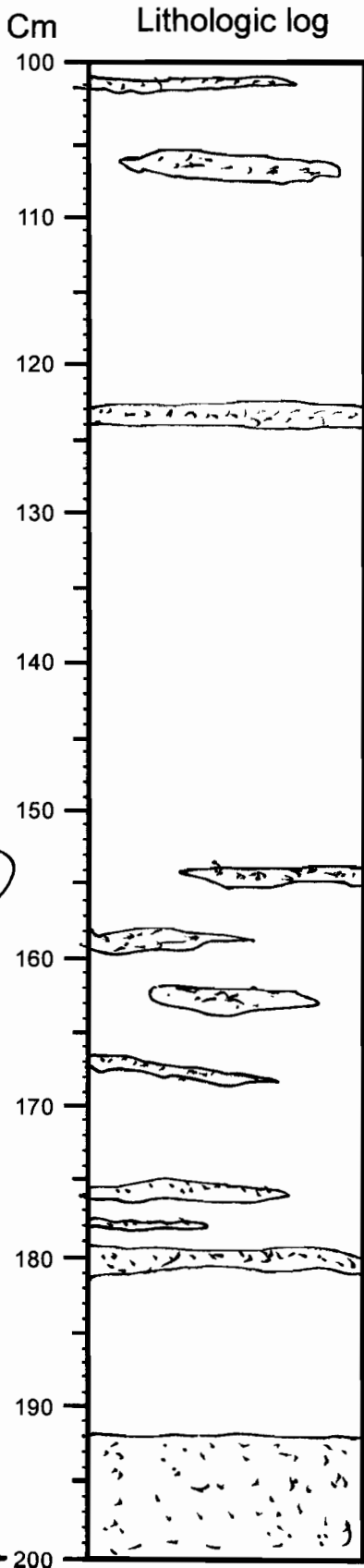
whole shell - snail shell

Grayish green sandy (fine) mud with
shell fragments (scattered) and some whole
small clam shells.

VISUAL CORE DESCRIPTION

Cruise _____ Sta. _____ Core no App 23

Describer Twichel Sta. Location _____



Detailed Description

Brish green mud with some scattered fine sand laminae. - Very little shell hash present

Brish green muddy sand (medium) with scattered shell hash

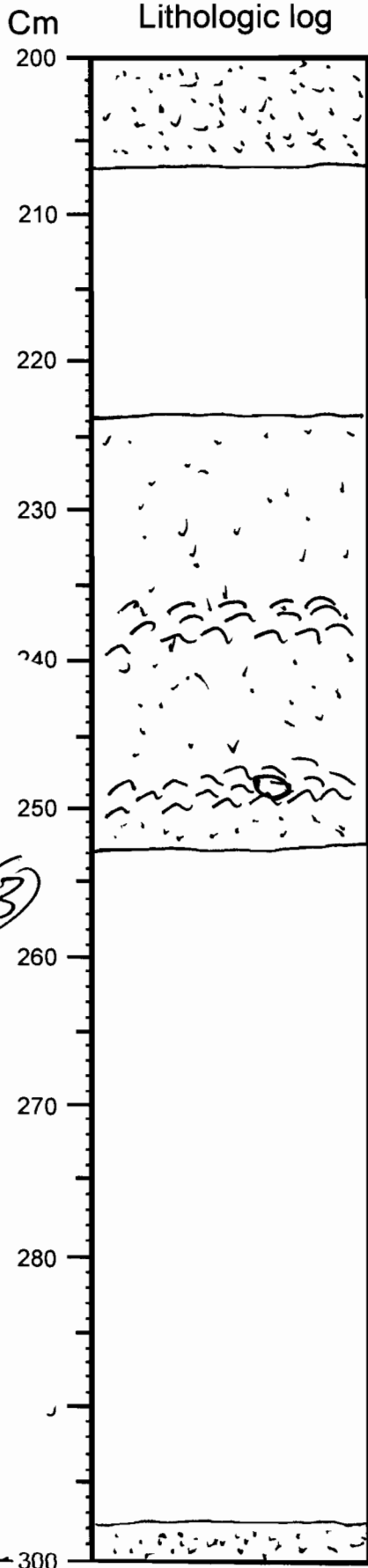
VISUAL CORE DESCRIPTION

Cruise _____ Sta. _____ Core no App 23

Describer Twickell Sta. Location _____

Lithologic log

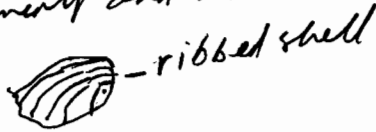
Detailed Description



Grayish green muddy sand

Grayish green silt with no shell hash

Grayish green muddy sand (fine-med) with shell fragments and whole shells near the base



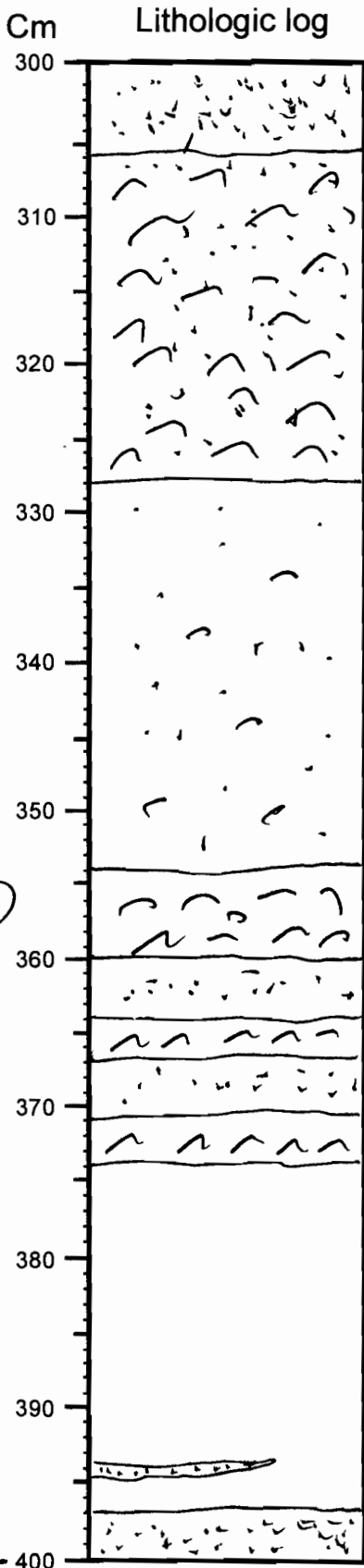
Grayish green mud with scattered small shell fragments and one large fragment at 274 cm

Grayish green medium sand with fine shell hash

VISUAL CORE DESCRIPTION

Page 4 of 6

Cruise _____ Sta. _____ Core no App 2523
 Describer Twichell Sta. Location _____



Detailed Description

Greyish green sand with shell ~~frag~~ hash

Shell bed (both whole clam shells and fragments - 2-3 different types of clams (quahog & soft shelled - look like) in a silty sand matrix.

Greyish green sandy mud with scattered small shell fragments (< 0.5cm)

Shell hash bed
 sandy mud
 shell hash bed
 sandy mud
 shell hash bed

Greyish green mud with thin sand laminae near base - scattered shell hash.

Greyish green ~~mud~~ sandy muddy sand (mud) with shell fragments

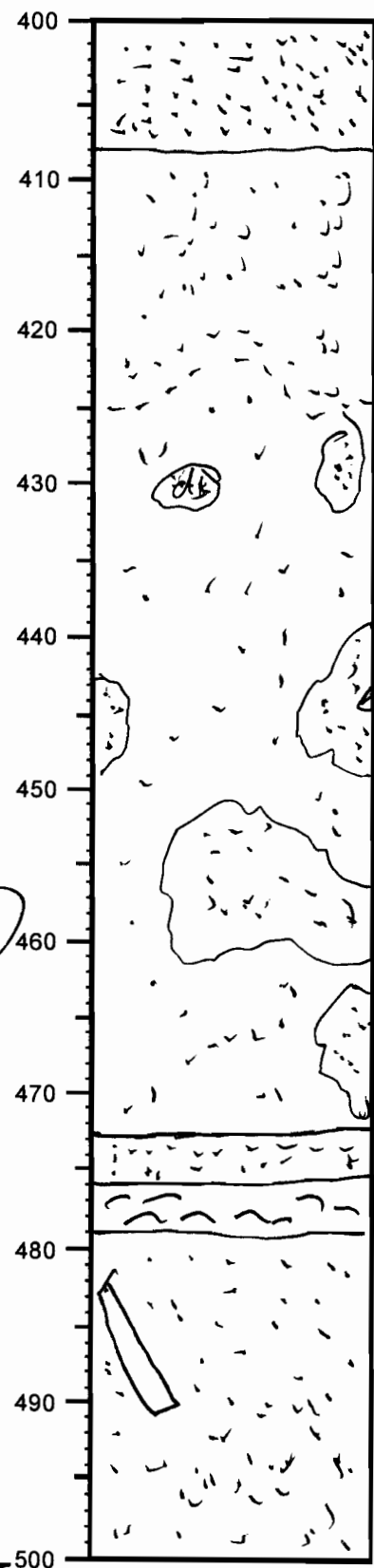
VISUAL CORE DESCRIPTION

Cruise _____ Sta. _____ Core no App 23

Describer Twickell Sta. Location _____

Lithologic log

Detailed Description



Light brownish medium sand with shell fragments

prototrust contact

Clean white sand with mottles of greenish grey sand. Alternating intervals of medium + fine sand. Dark sand may be mottles from prototrust?

dark sand

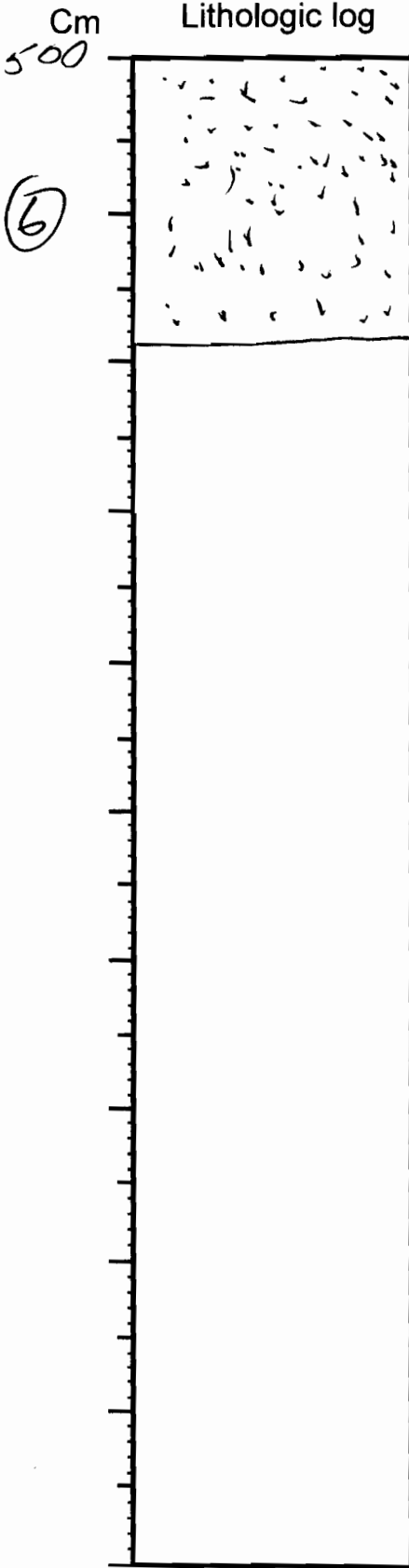
Clear fine white sand
Bed of small clam shells (2 cm) + shell hash in grey-green grey sandy matrix

Bluish grey med/coarse sand with scattered shell hash + large wood fragment.

VISUAL CORE DESCRIPTION

Cruise _____ Sta. _____ Core no App 023

Describer Twichell Sta. Location _____



Detailed Description

*Blueish gray med/coarse sand with some
darker mottles.
No shell hash.*

519 cm - end of core