

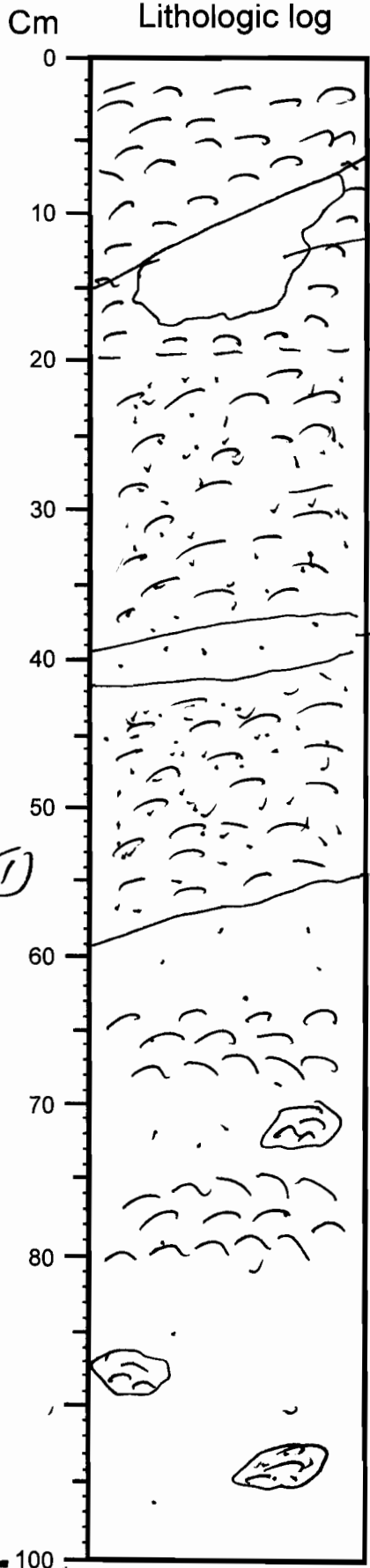
VISUAL CORE DESCRIPTION

Cruise Gilbert Sta. No 051 Core no App 25

Describer Twickell Sta. Location West of St. Vincent Bar

Lithologic log

Detailed Description



Finely ground shell hash

Light brown clay clast surrounded by shell hash

Brish green shell hash with fine muddy sand matrix

clay len with some fine sand

Sandy clay (stiff) with abundant shell hash in beds + burrows. Shell hash decreases with depth.

①

②

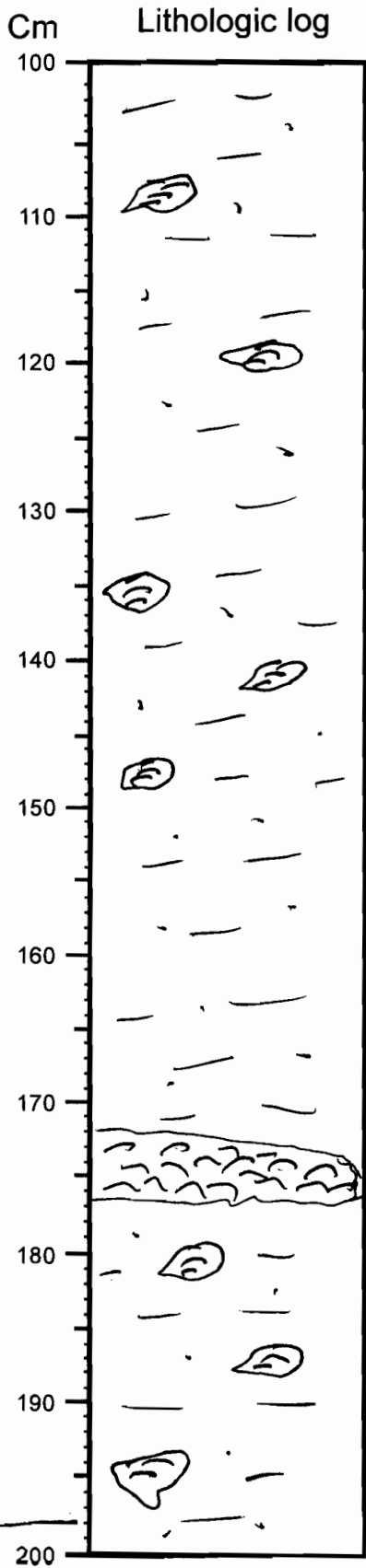
③

④

VISUAL CORE DESCRIPTION

Cruise _____ Sta. _____ Core no App 25

Describer _____ Sta. Location _____



Detailed Description

*Org green sandy clay with burrows
filled with shell hash -
Sand content may increase downward.*

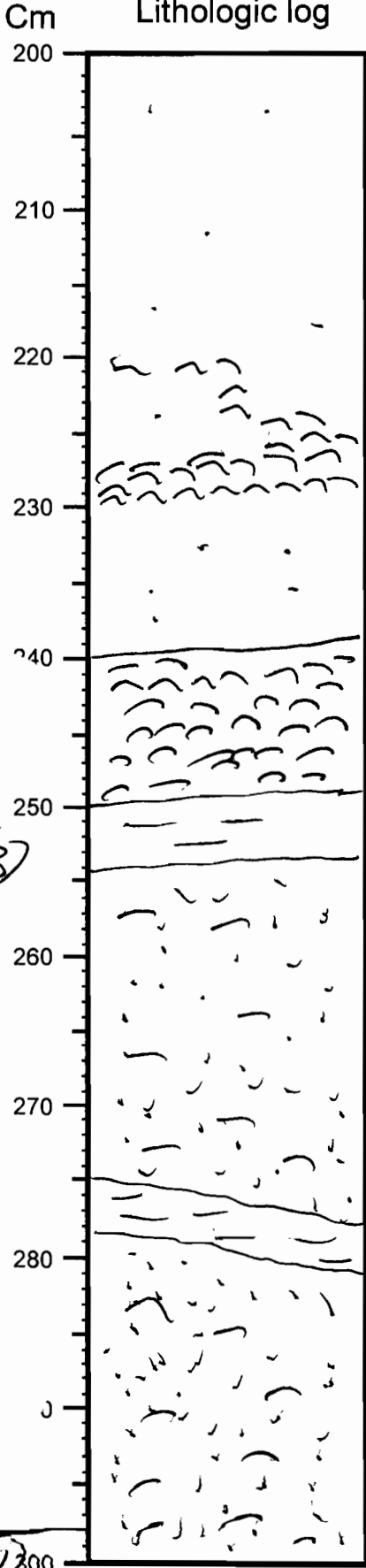
VISUAL CORE DESCRIPTION

Cruise _____ Sta. _____ Core no App 25

Describer _____ Sta. Location _____

Lithologic log

Detailed Description



Same whole bivalve shells.

Shell hash bed with some whole bivalve shells.

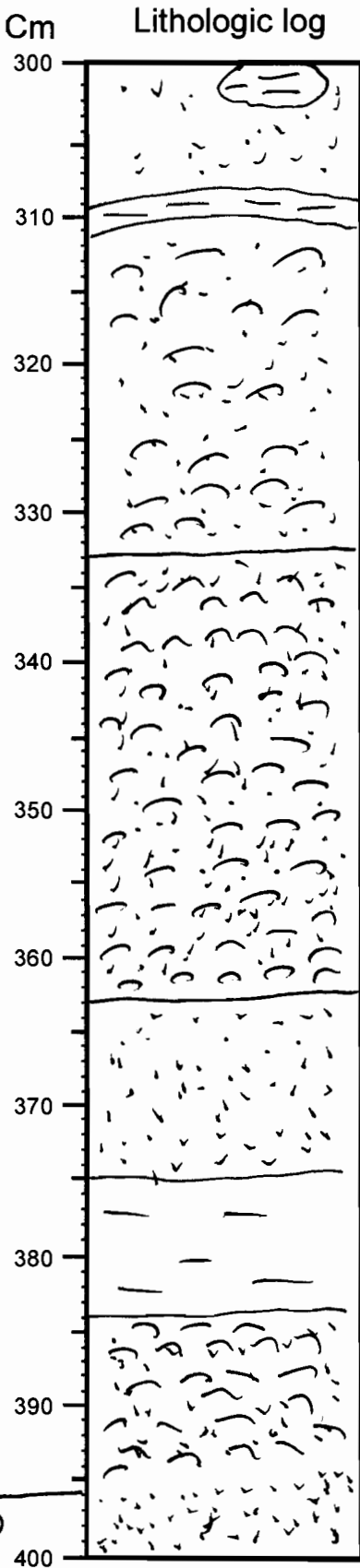
Silt bed

Original green medium/coarse muddy sand with abundant shells & shell hash and occasional silt lens or clasts

VISUAL CORE DESCRIPTION

Cruise _____ Sta. _____ Core no App 25

Describer _____ Sta. Location _____



Detailed Description

Shell bed (no oysters) in a soupy muddy sand matrix. No oysters

Medium sand

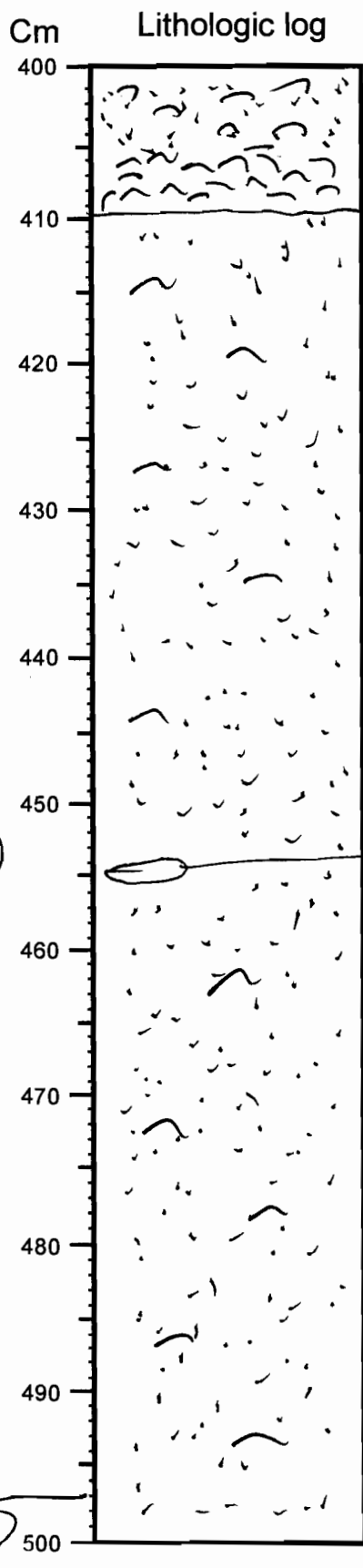
Silty clay bed

Shell bed

VISUAL CORE DESCRIPTION

Cruise _____ Sta. _____ Core no App 25

Describer _____ Sta. Location _____



Detailed Description

Brish green medium / coarse muddy sand with scattered shell hash & scattered whole shells. Whole shells are clams - no oysters. Most shells (large ones) are soft shell clams or cheystones. Several small clam shells as well (< 1cm)

rozo clam?

5

6

VISUAL CORE DESCRIPTION

Page 6 of 6

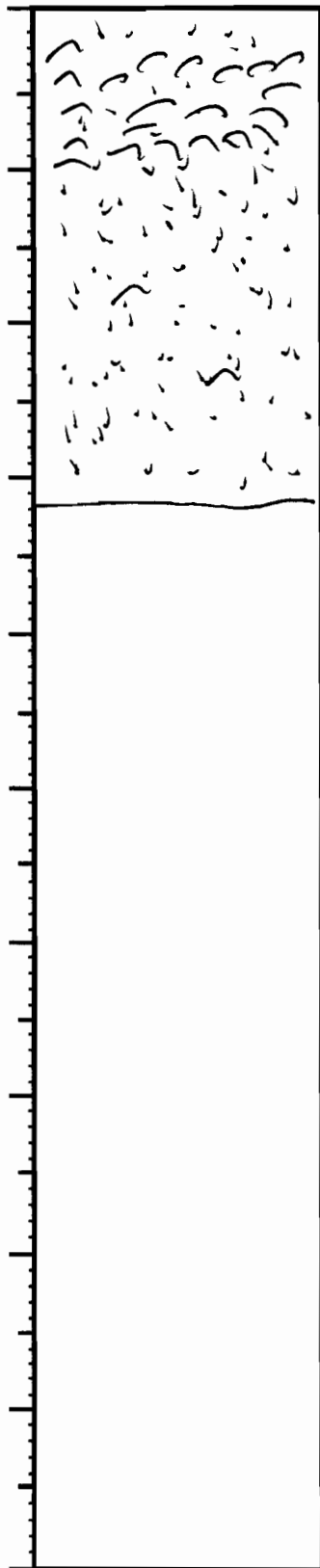
Cruise _____ Sta. _____ Core no App 25

Describer _____ Sta. Location _____

Cm
500

Lithologic log

Detailed Description



Only scattered shell hash below shell bed,

532 cm.