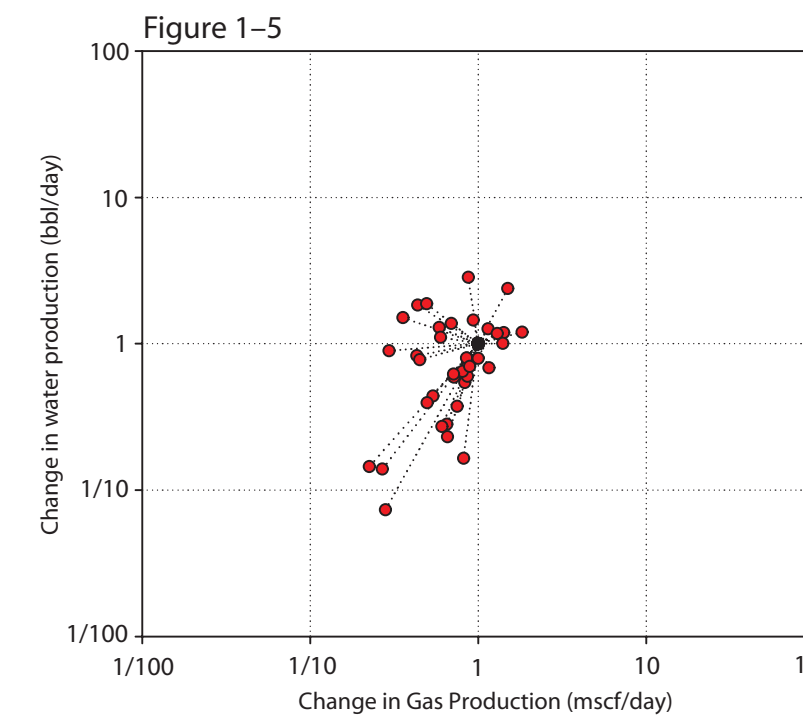
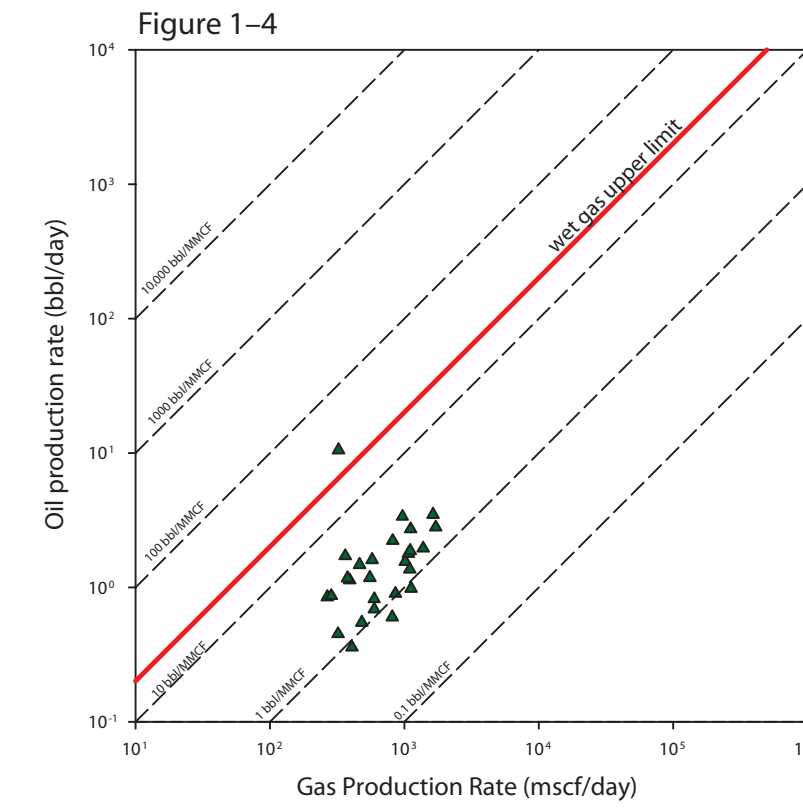
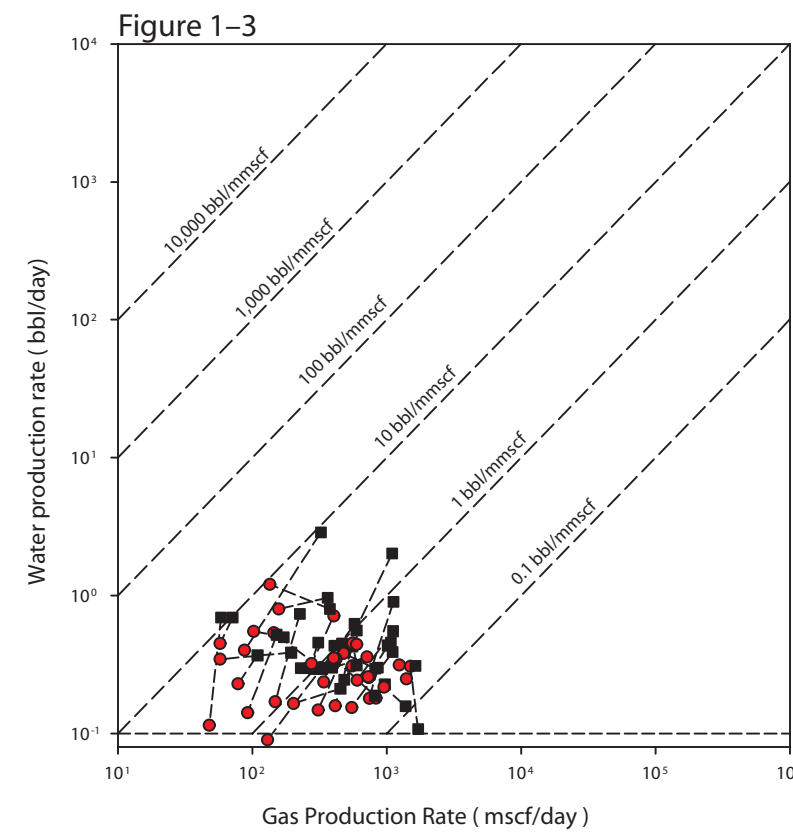
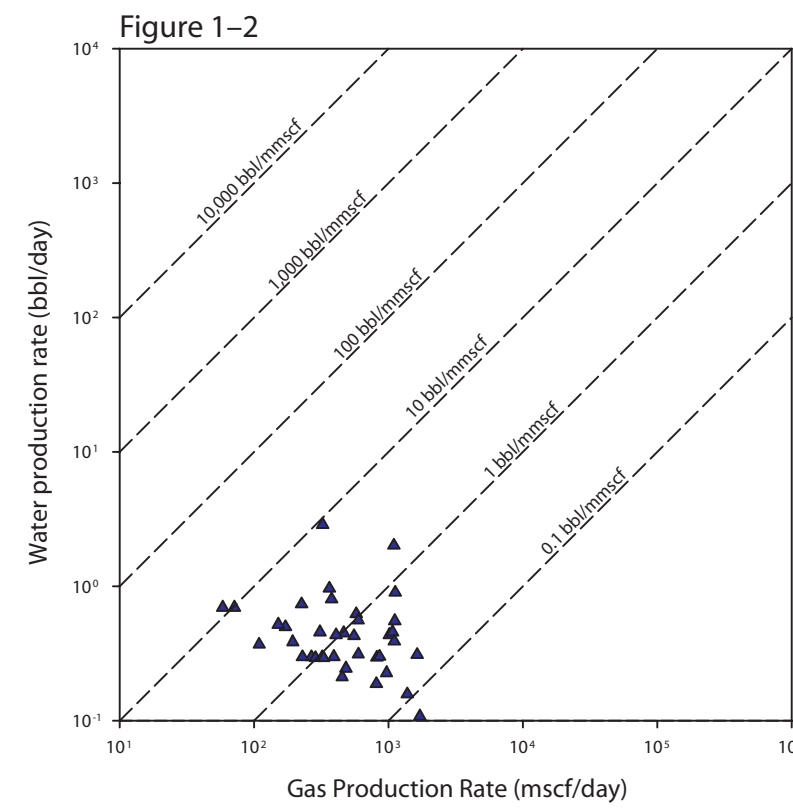
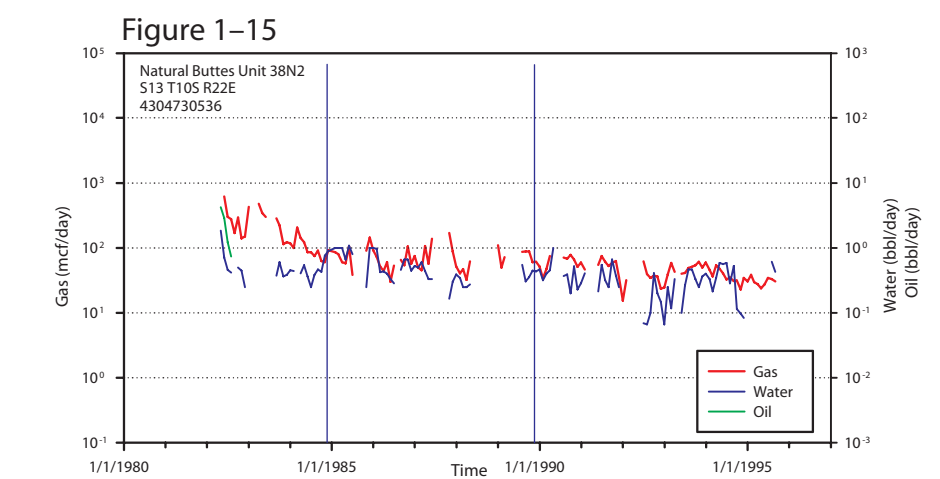
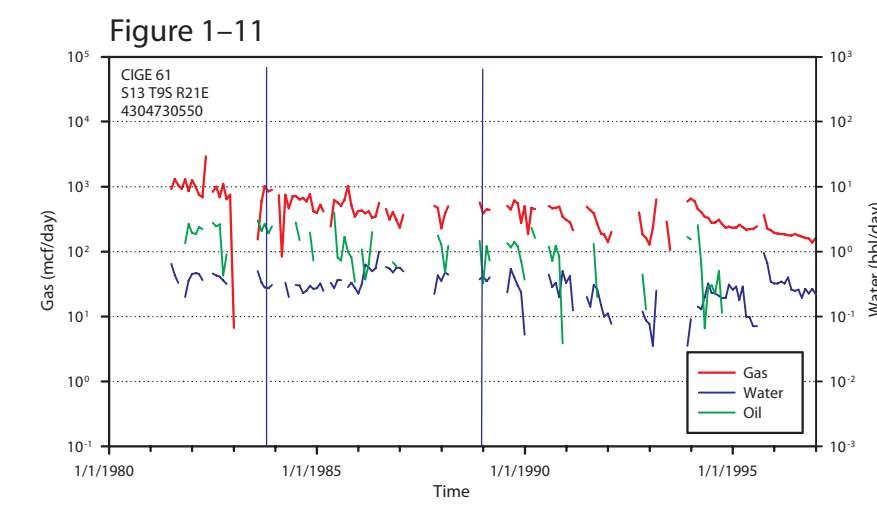
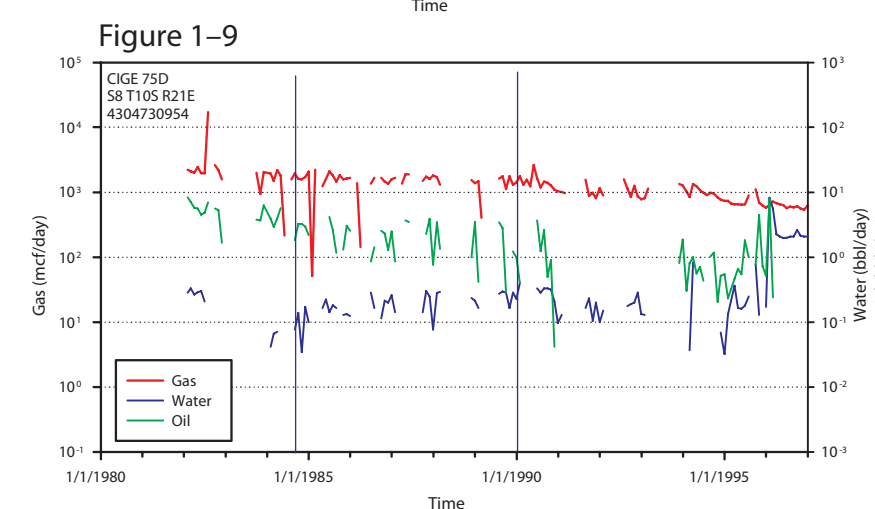
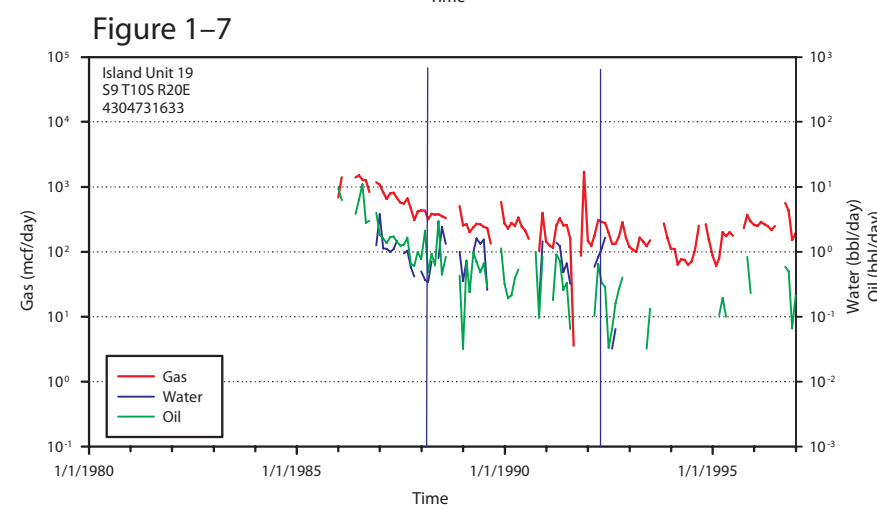
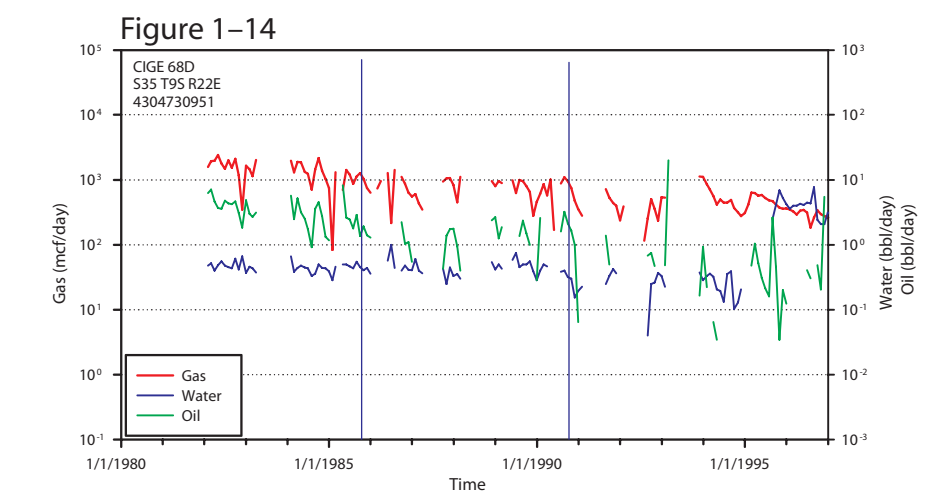
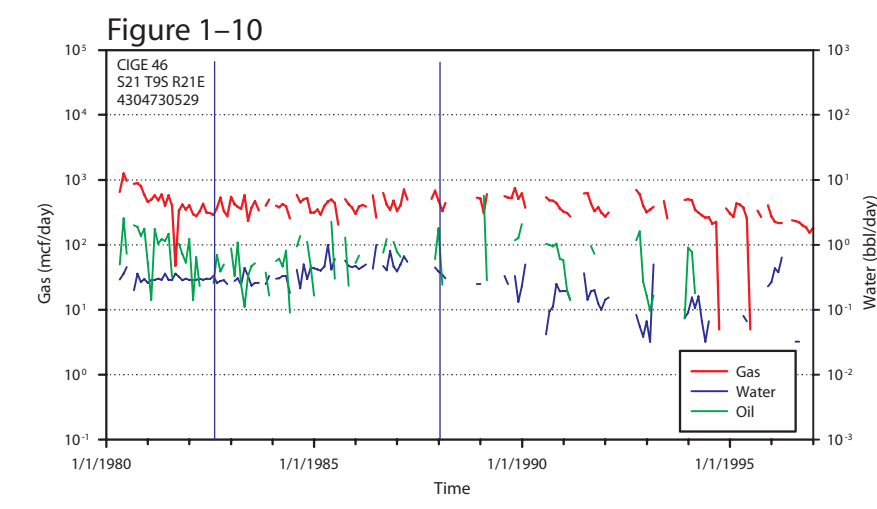
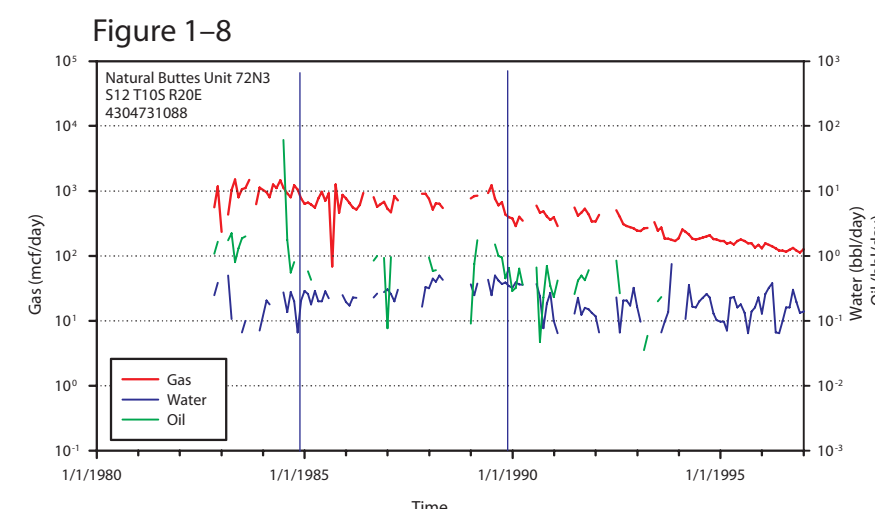
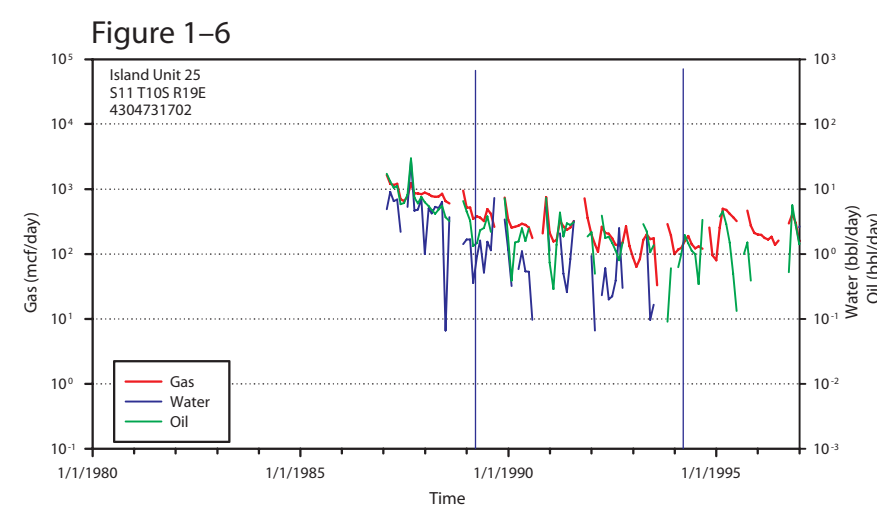
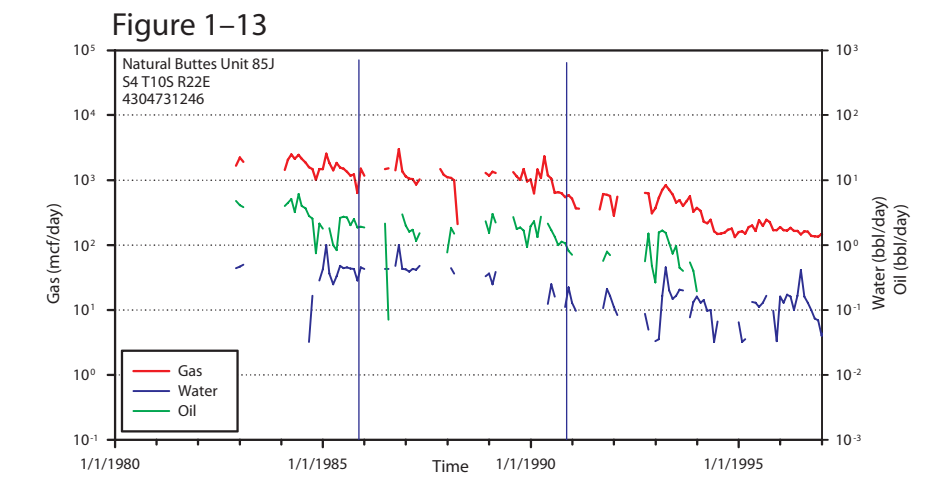
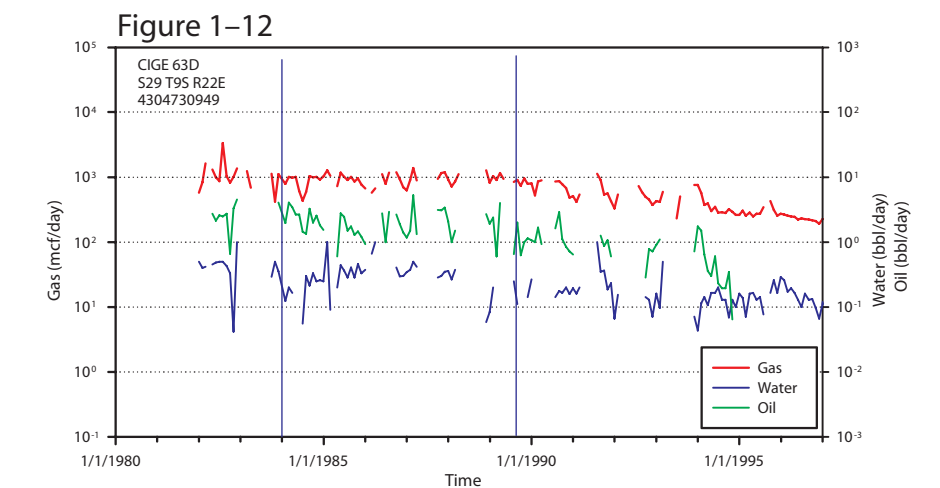


Figure 1-1. Map of wells in the Greater Natural Buttes field



Locations of the 34 wells that were studied are shown in figure 1-1. Production plots for 10 of these 34 wells are shown in figures 1-6 through 1-15. Gas, water, and oil daily production rates are computed at times indicated by the two vertical lines in the production plots. Gas and water production at the initial time is summarized in figure 1-3; gas and oil production at the initial time is summarized in figure 1-4. Changes in water and gas production over 5-year intervals are shown in figures 4 and 5. [mscf, thousand standard cubic feet; mmscf, million standard cubic feet; bbl, barrels]



Gas, Oil, and Water Production from the Wasatch Formation, Greater Natural Buttes Field, Uinta Basin, Utah

By Philip H. Nelson and Eric L. Hoffman

2009