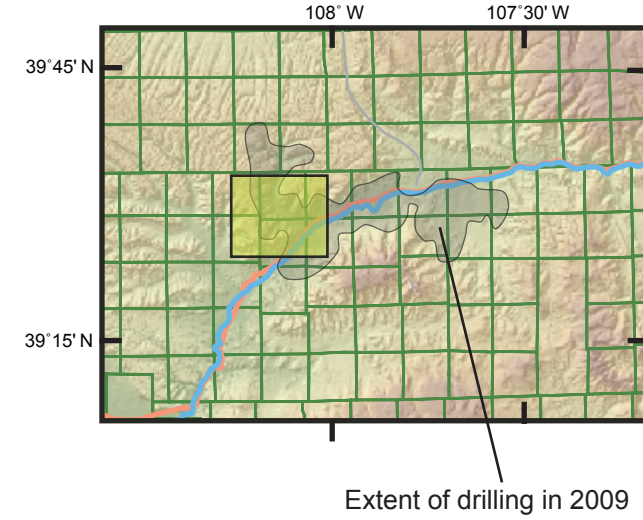


Figure 3-1. Map of wells in this study for the Mesaverde Group, Grand Valley field.



Locations of the 27 wells that were studied are shown in figure 3-1. Gas and water production at the first sample time is summarized in figure 3-2, with gas and oil production at the first sample time in figure 3-3. Changes in water and gas production over 5-year intervals are shown as vectors in figure 3-4, with the normalized vectors in figure 3-5. Production plots for 10 of these 27 wells are shown in figures 3-6 through 3-15; API number is given below section, township, and range for each well. Daily production rates for gas are computed at times indicated by circles on the two vertical lines in the production plots. [mcf, thousand cubic feet; mmcf, million cubic feet; bbl, barrels; F, hydraulically fractured; A, acidized]

Figure 3-2. First sample gas and water production

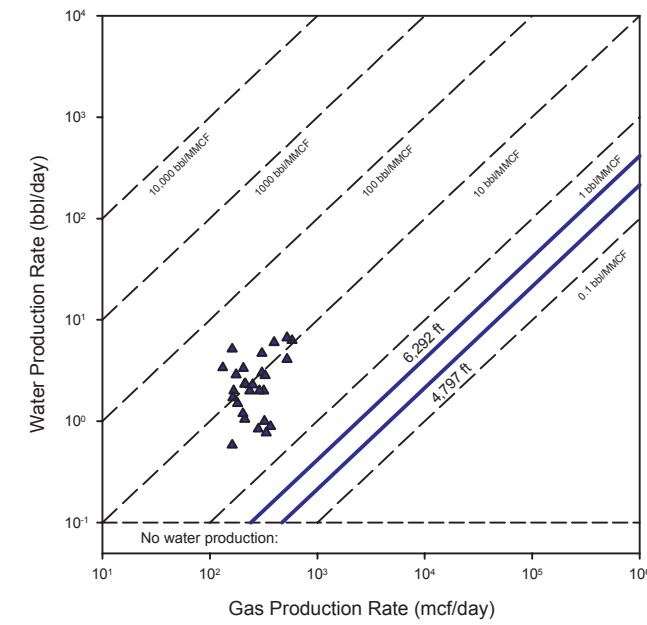


Figure 3-3. First sample gas and oil production

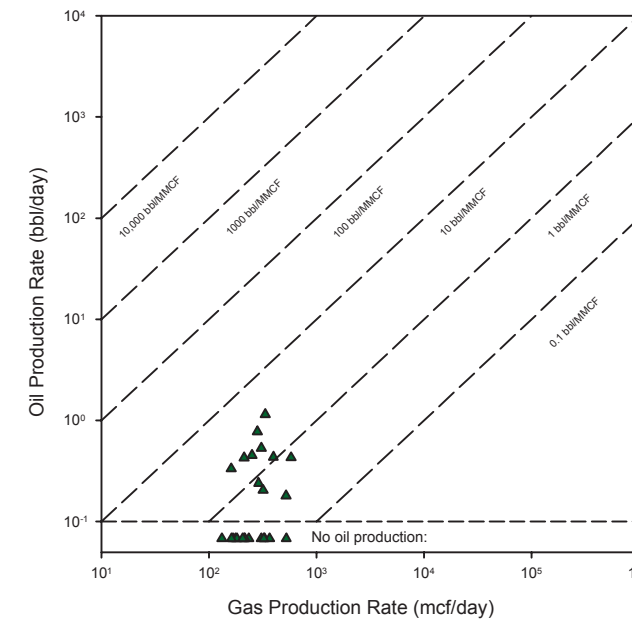


Figure 3-4. Gas and water production over 5-year interval

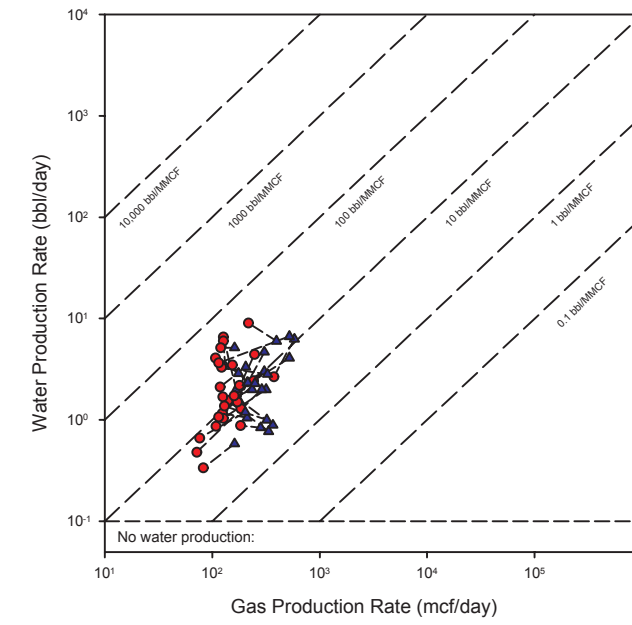


Figure 3-5. Normalized change in gas and water production over 5-year interval

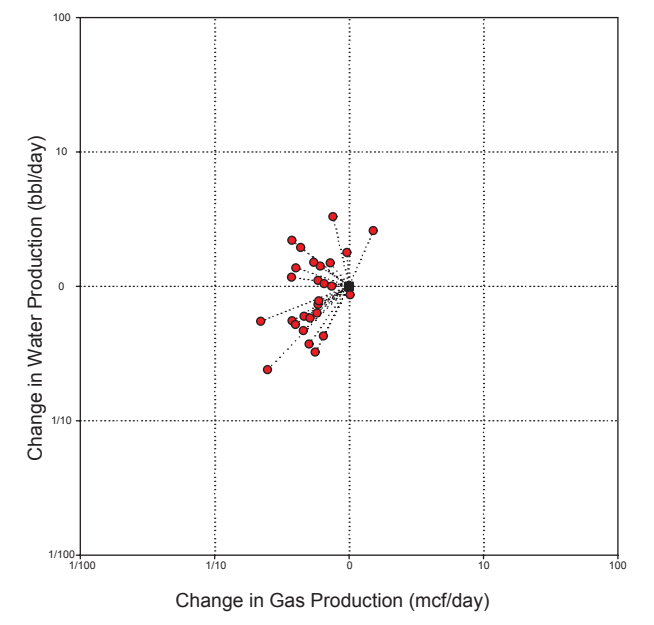


Figure 3-6. Well MV 55-29

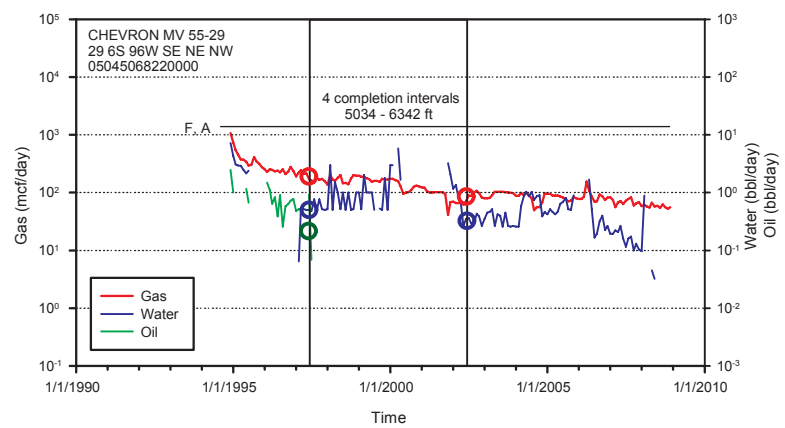


Figure 3-7. Well MV 23-27

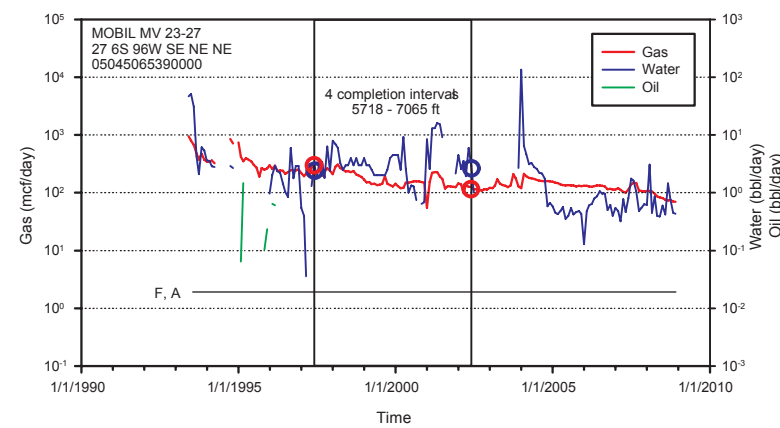


Figure 3-8. Well GR 14-28

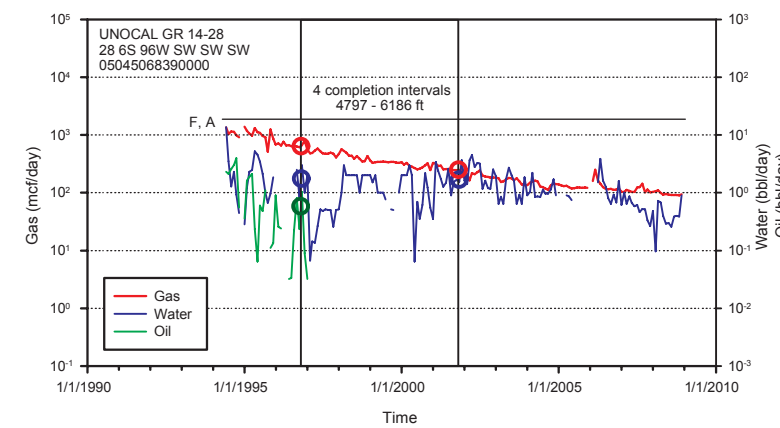


Figure 3-9. Well GR 1-33R

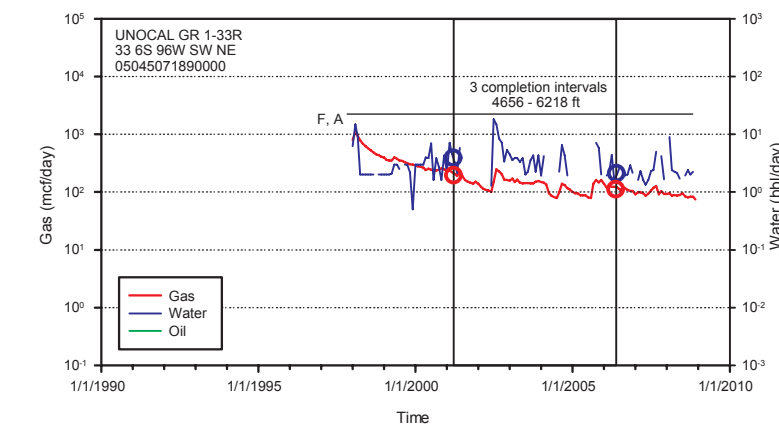


Figure 3-10. Well MV 9-32

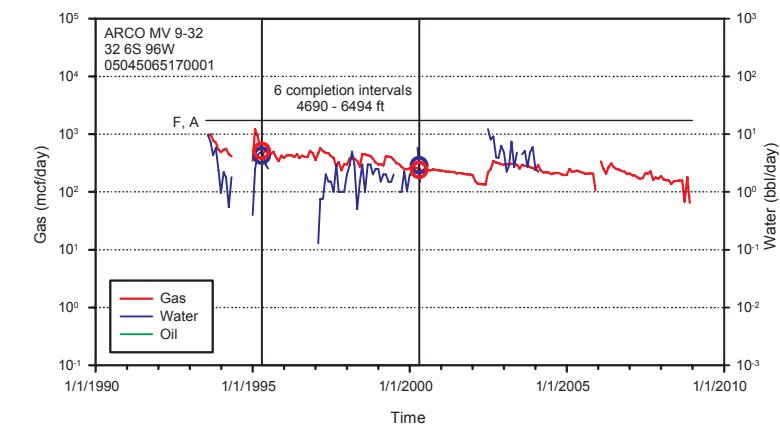


Figure 3-11. Well 13-34

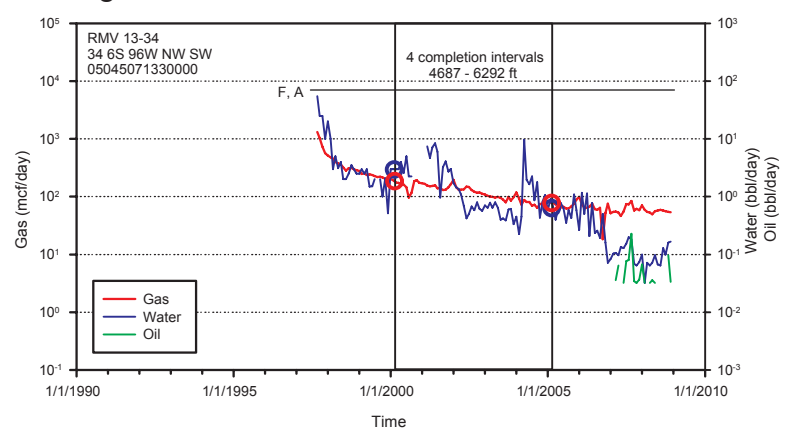


Figure 3-12. Well GR 21-3V

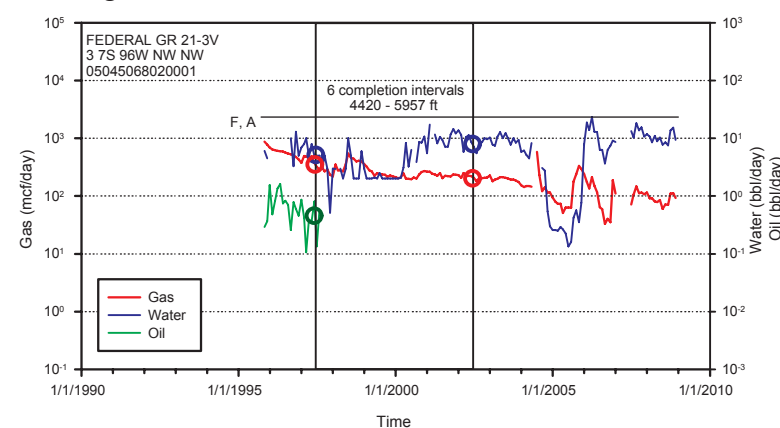


Figure 3-13. Well MV 28-4

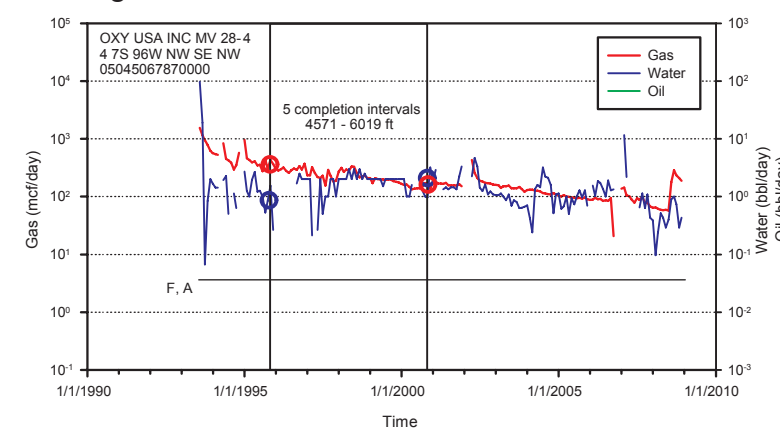


Figure 3-14. Well GM 13-1

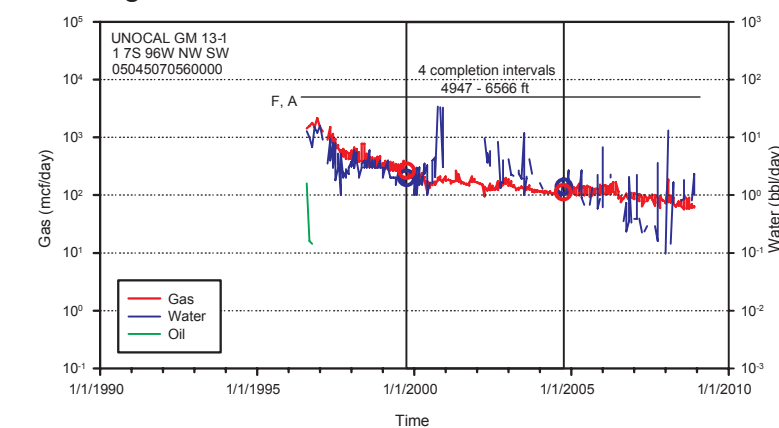


Figure 3-15. Well SG 43-22

