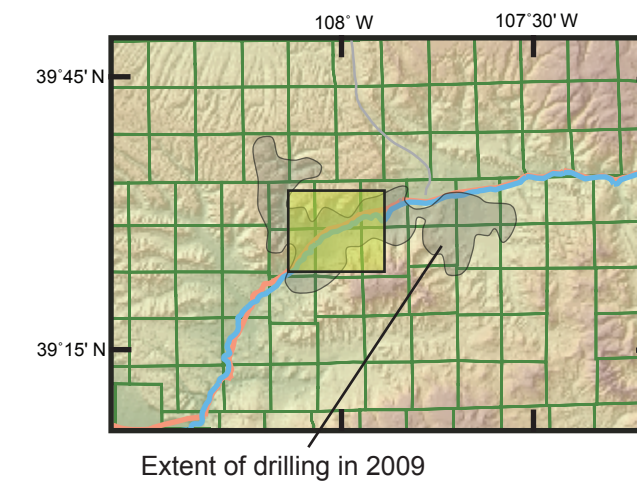


Figure 4-1. Map of wells in this study for the Mesaverde Group, Parachute field.

Locations of the 20 wells that were studied are shown in figure 4-1. Gas and water production at the first sample time is summarized in figure 4-2, with gas and oil production at the first sample time in figure 4-3. Due to lack of adequate water records in this field, no change vector plots are presented. Production plots for 10 of these 20 wells are shown in figures 4-4 through 4-13; API number is given below section, township, and range for each well. Daily production rates for gas are computed at times indicated by circles on the two vertical lines in the production plots. [mcf, thousand cubic feet; mmcf, million cubic feet; bbl, barrels; F, hydraulically fractured; A, acidized]



Extent of drilling in 2009

Figure 4-2. First sample gas and water production

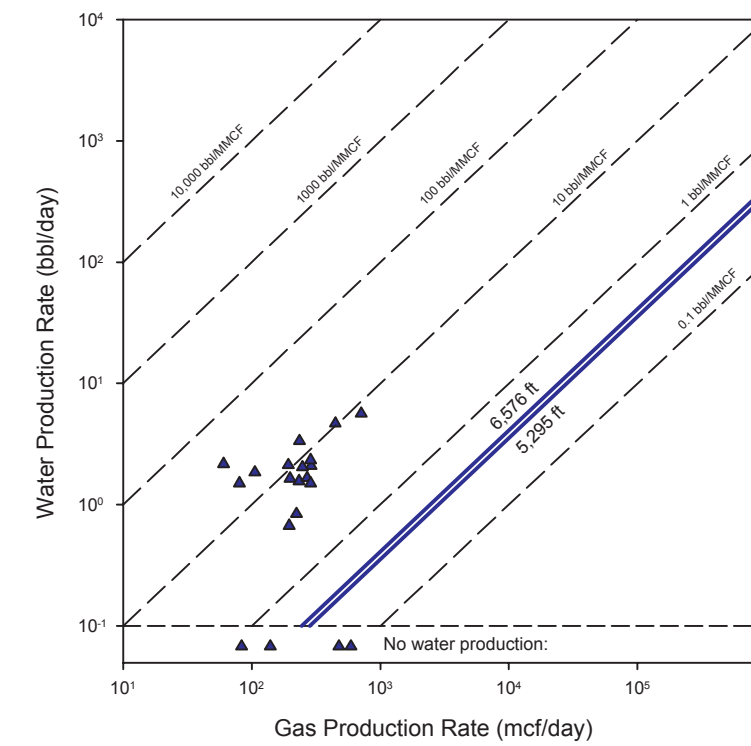


Figure 4-3. First sample gas and oil production

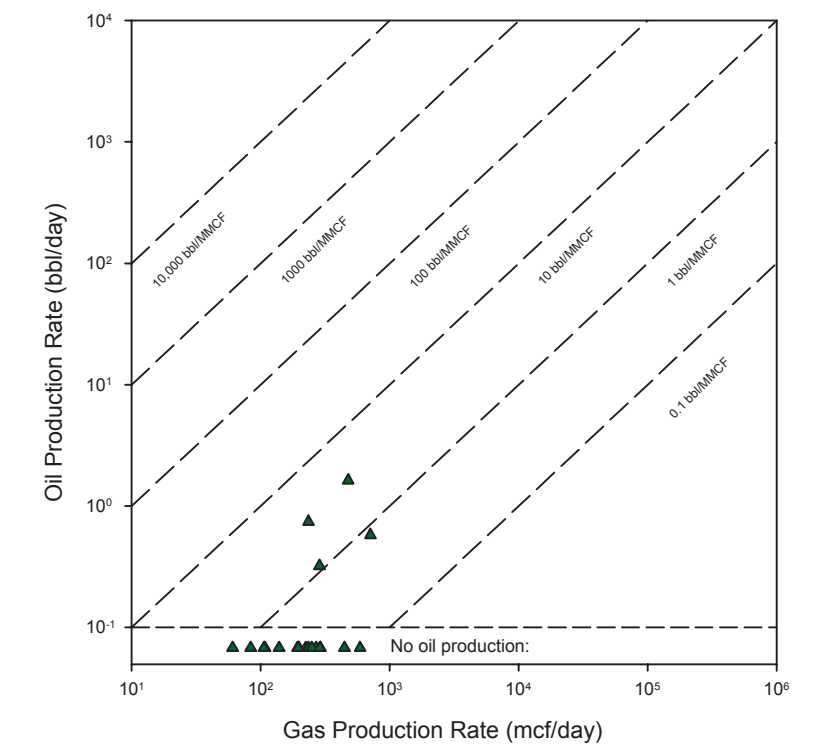


Figure 4-4. Well 1-M-29

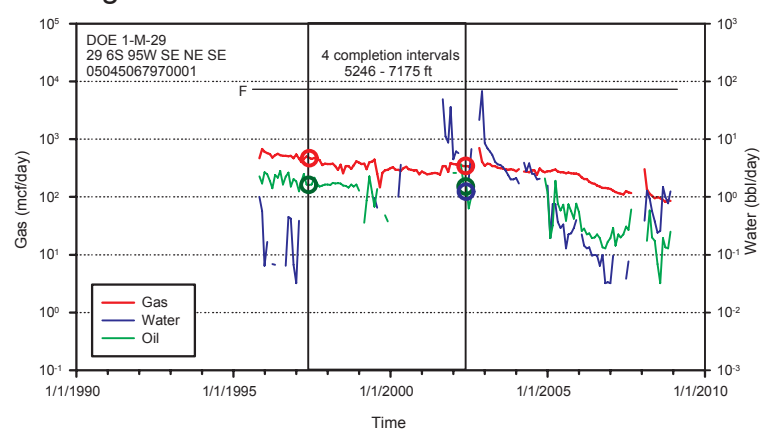


Figure 4-5. Well PA-23-33

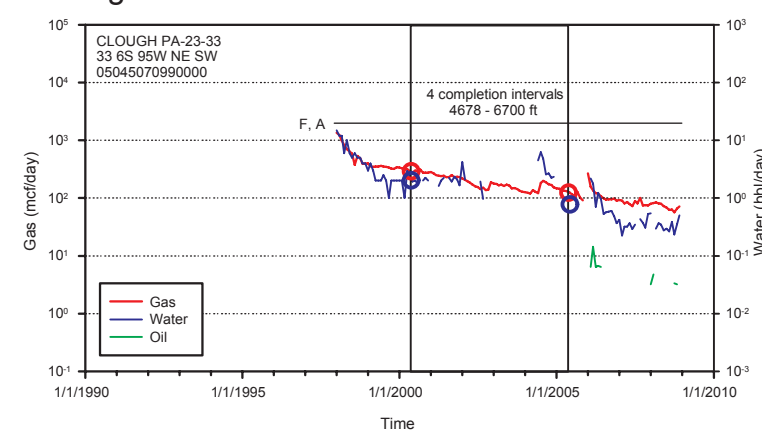


Figure 4-6. Well 44-33

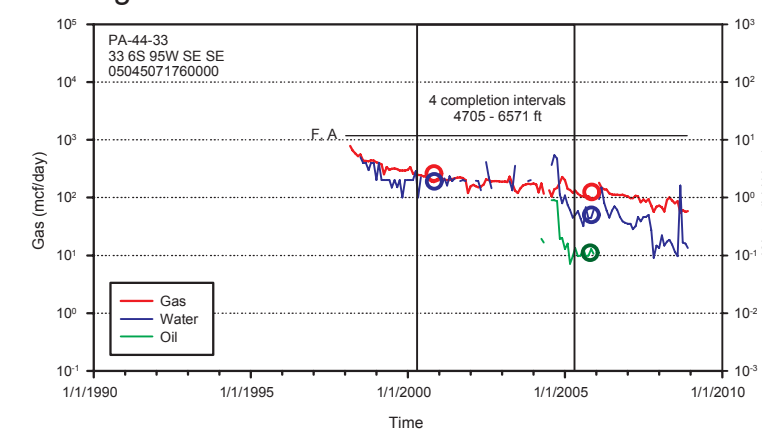


Figure 4-7. Well GV-79-35

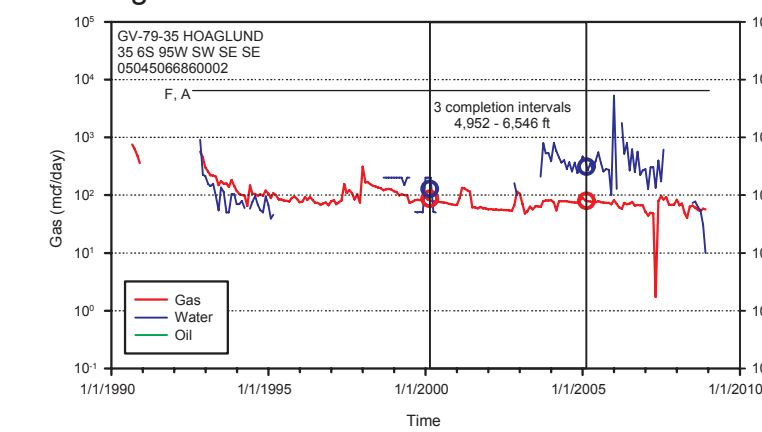


Figure 4-8. Well PA-24-32

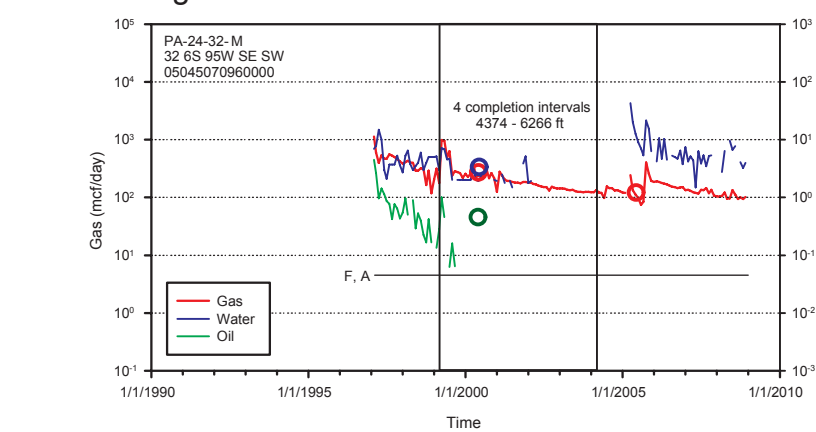


Figure 4-9. Well GV-49-3

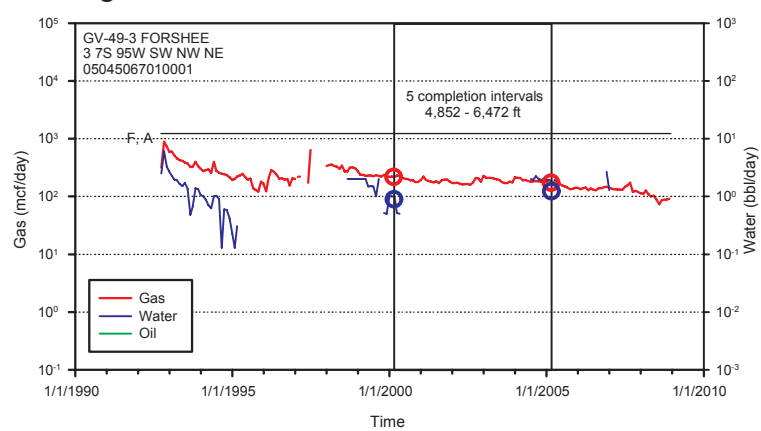


Figure 4-10. Well GV-51-4

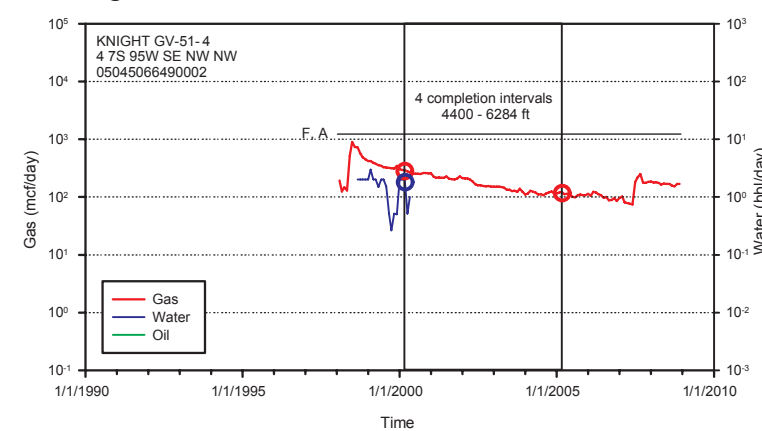


Figure 4-11. Well GV-82-5

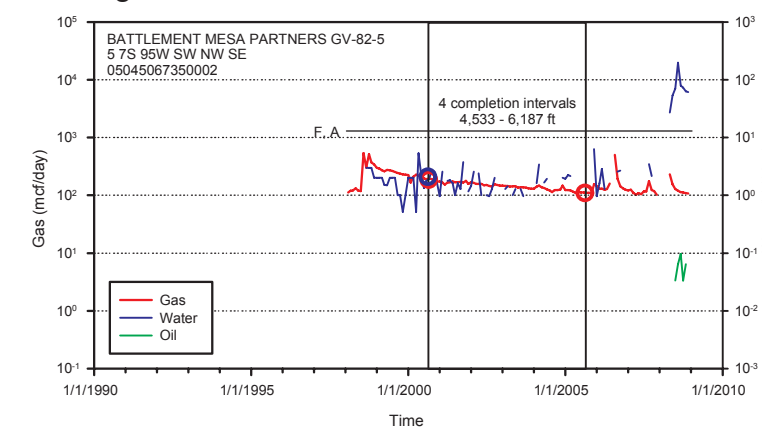


Figure 4-12. Well GV-88-1

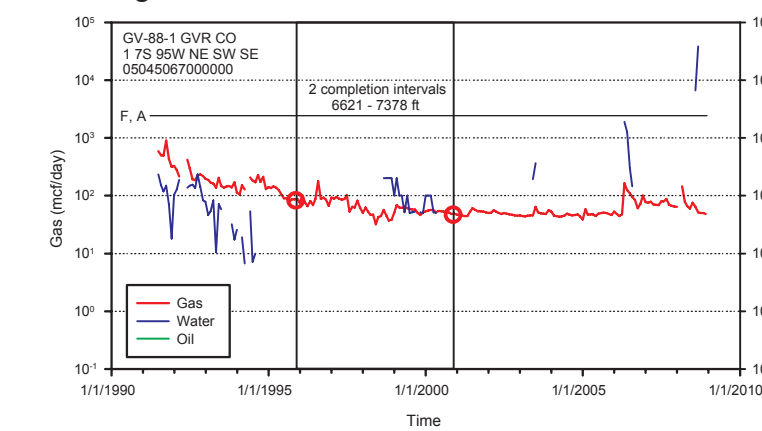


Figure 4-13. Well 11-24

