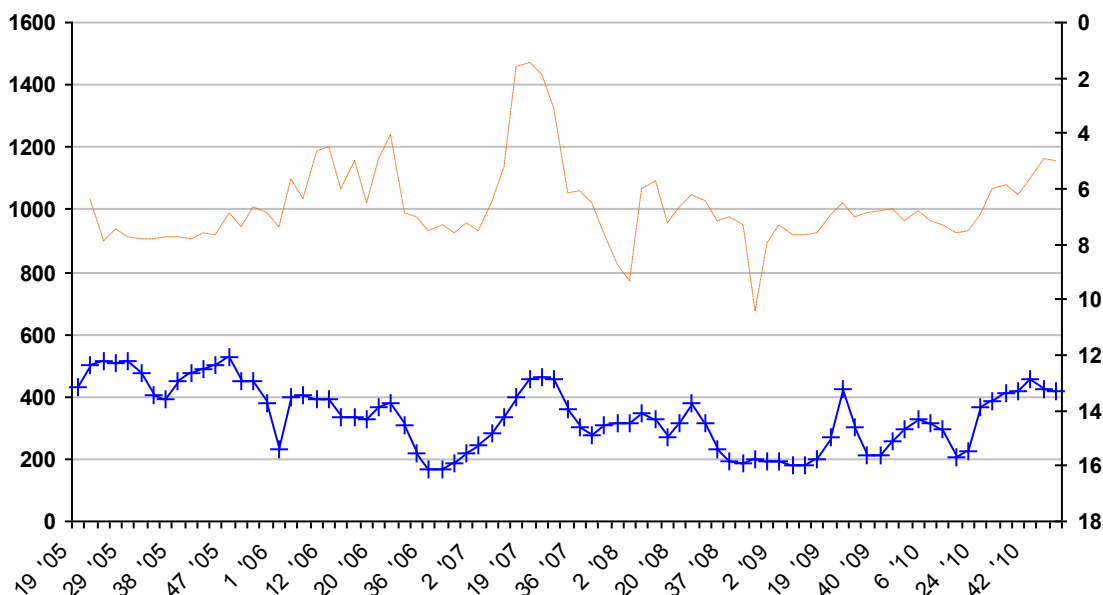


Appendix 3. Hydrograph for groundwater monitoring well GWM 21 modified from Danish Committee for Aid to Afghan Refugees (2011).

GWM_ID	21	Well type	Latitude	34.20007
District	Kot		Longitude	70.64901
Place	Jabeh		Organisation in charge of the measurement	
Method	manual (with modified well)		DACAAR	



EXPLANATION

+++++ depth to water (m) below ground surface – right vertical axis  
 ——— groundwater specific conductance (µS/cm) – left vertical axis

The horizontal axis on the hydrograph is the date given as week number and year (for example, 19 '05 is week number 19 in 2005). The left vertical axis is the groundwater specific conductance in microsiemens per centimeter (µS/cm) and the right vertical is the depth to water in meters (m) below ground surface (bgs).