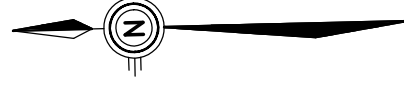


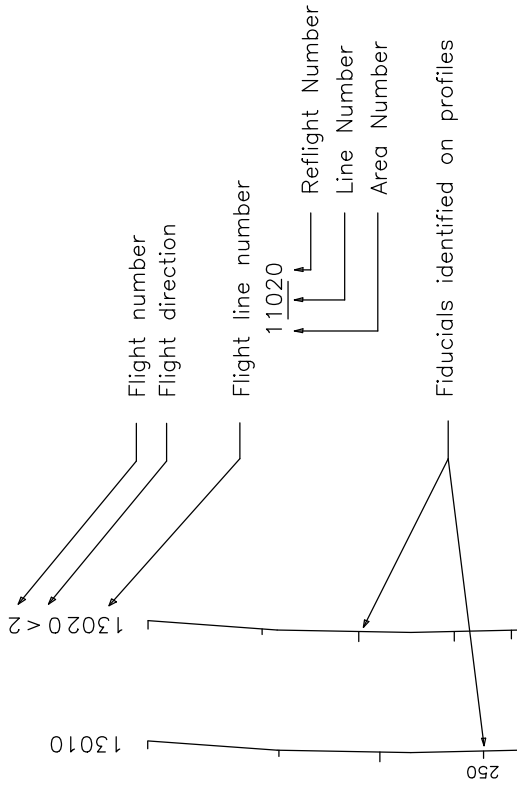
**TECHNICAL SUMMARY**

Navigation: Differentially-corrected GPS  
 Data reduction grid interval: 100 metres  
 Terrain clearance: Helicopter 57 m, sensor 30 m  
 Magnetometer: 30 m  
 Data sampling interval: 0.1 second  
 Frequency Sensitivity: FUGRO RESOLVE  
 Electromagnetic system: FUGRO RESOLVE  
 Regional field removed: International Geomagnetic Reference Field 2005  
 Date flown: March 16-17, 2007

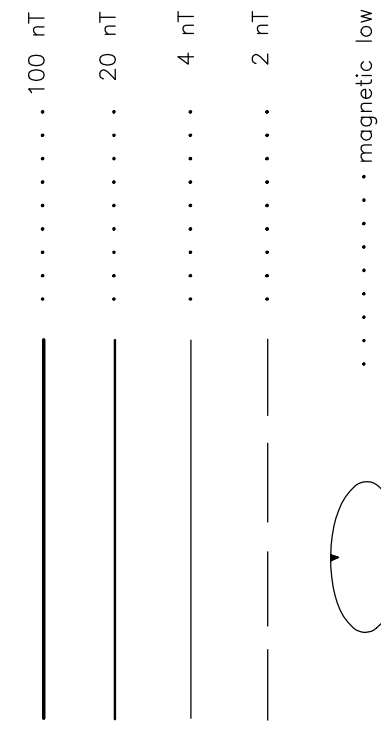
Cell Orientation  
 3300 Hz Vertical coplanar  
 400 Hz Horizontal coplanar  
 1500 Hz Horizontal coplanar  
 25000 Hz Horizontal coplanar  
 115000 Hz Horizontal coplanar



**FLIGHT LINES**

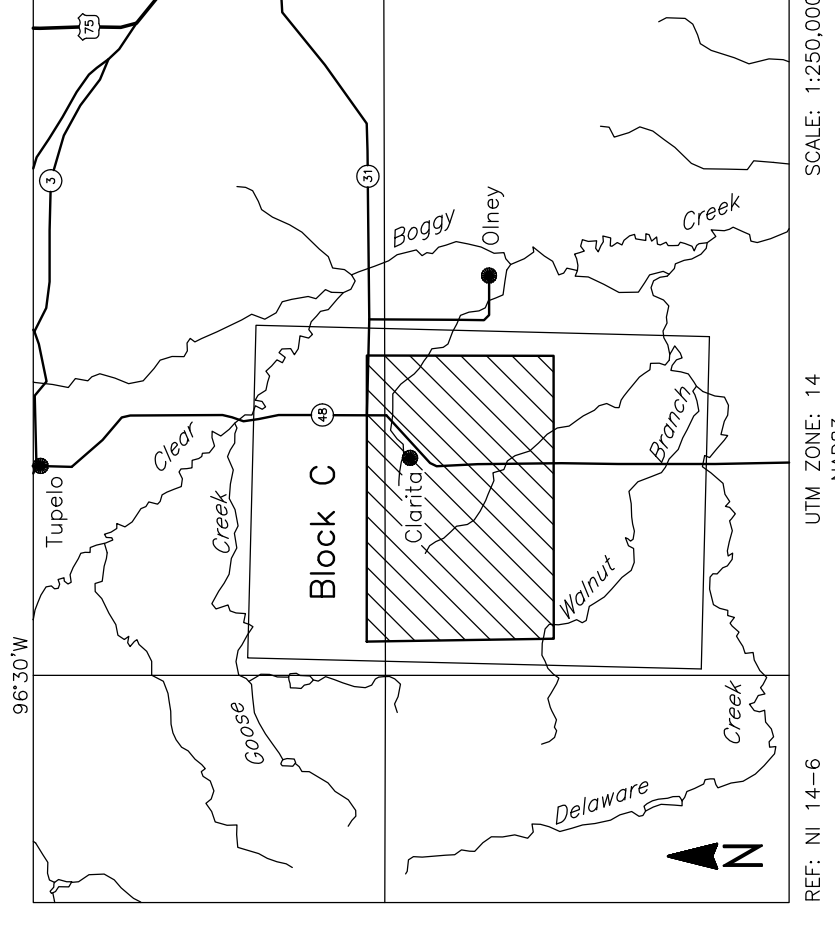


**RESIDUAL MAGNETIC FIELD CONTOURS**



Magnetic inclination within the survey area: 63 degrees N  
 Magnetic declination within the survey area: 4 degrees E

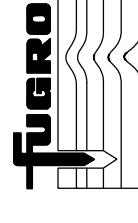
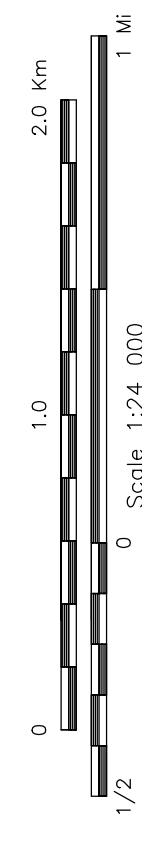
**LOCATION MAP**



**U.S. GEOLOGICAL SURVEY**  
 Arbuckle Simpson Aquifer Block C, Oklahoma

**RESIDUAL MAGNETIC FIELD**  
 IGRF Removed

FUGRO RESOLVE SURVEY	REF: NI 14-6	GEOPHYSICIST:
DATE: MARCH, 2007	JOB: 06079	SHEET: 1
Fugro Airborne Surveys		

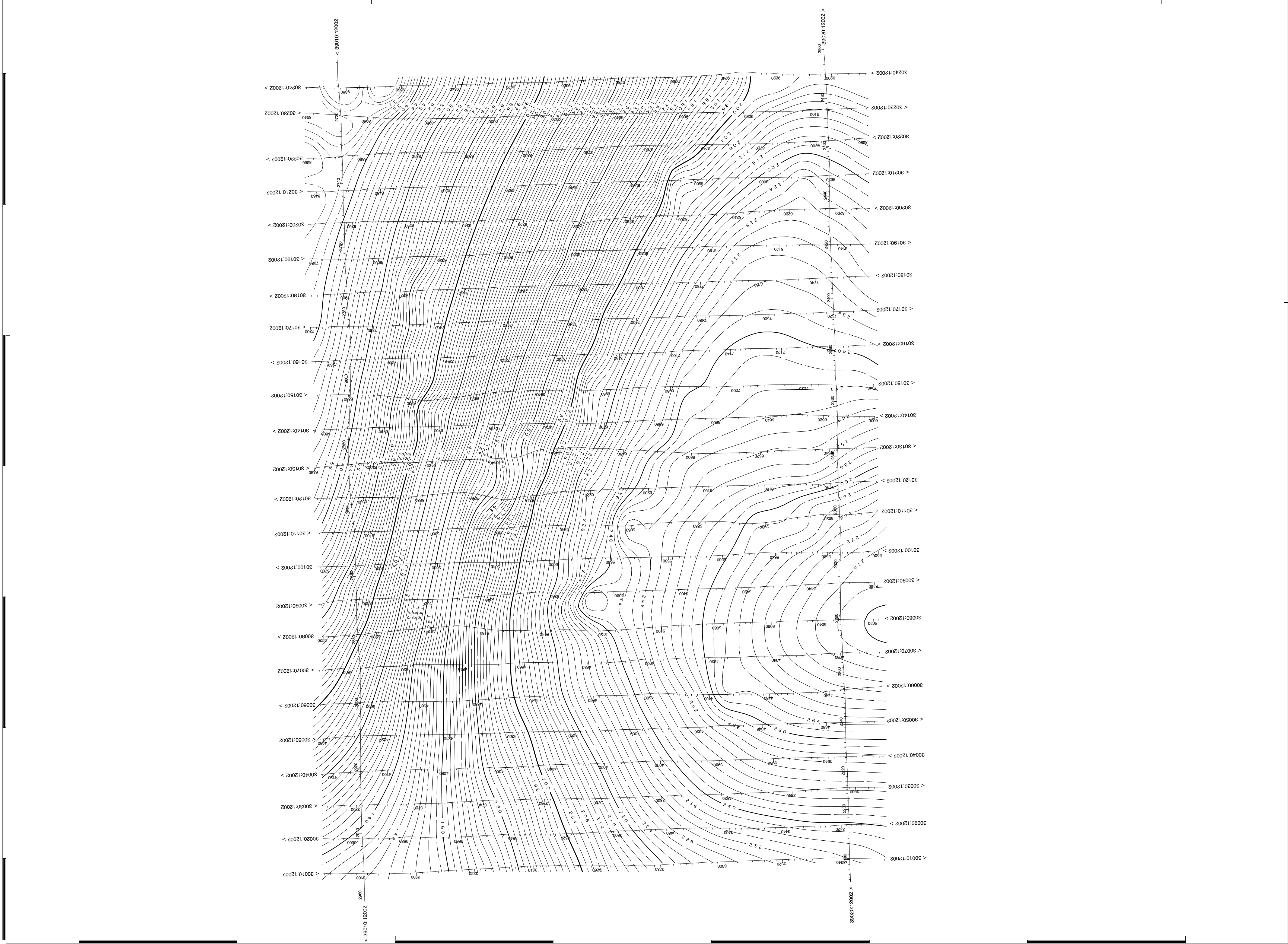


**FUGRO AIRBORNE SURVEYS**

W 10225

N 3430

N 3426



W 10225

N 3430

N 3426