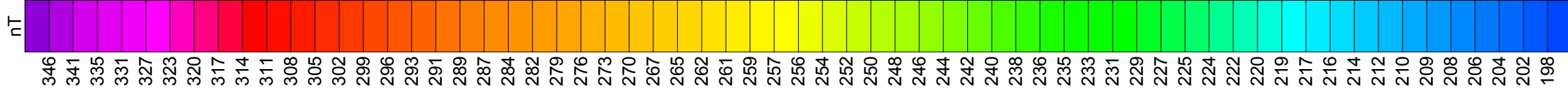


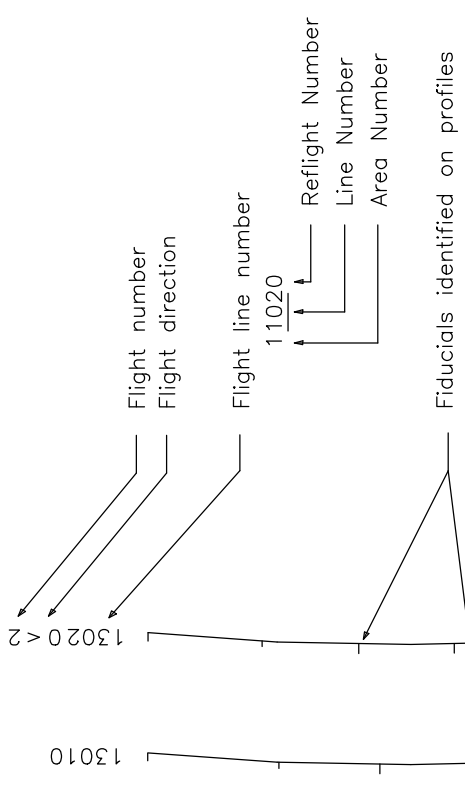
**TECHNICAL SUMMARY**

Navigation: Differentially-corrected GPS  
 Data reduction grid interval: 100 metres  
 Helicopter: 57 m sensor 30 m  
 Terrain clearance: Magnetometer 30 m  
 Data sampling interval: 0.1 second  
 Electromagnetic system: FUGRO RESOLVE  
 Regional field removed: International Geomagnetic Reference Field 2005  
 Date flown: March 16-17, 2007

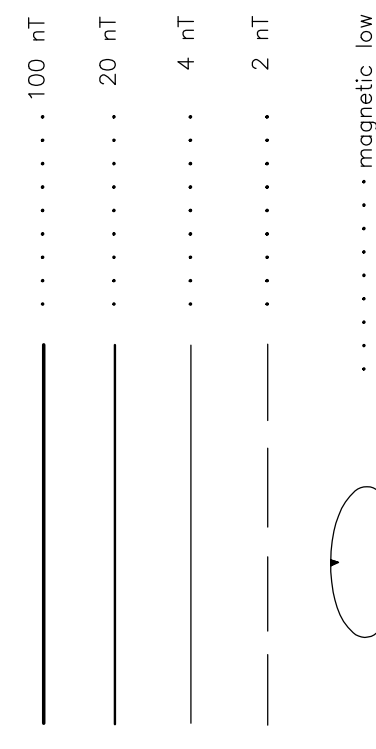
Frequency Sensitivity Cell Orientation  
 3300 Hz 0.12 ppm Vertical coplanar  
 400 Hz 0.12 ppm Horizontal coplanar  
 1500 Hz 0.12 ppm Horizontal coplanar  
 2500 Hz 0.60 ppm Horizontal coplanar  
 115000 Hz 0.60 ppm Horizontal coplanar



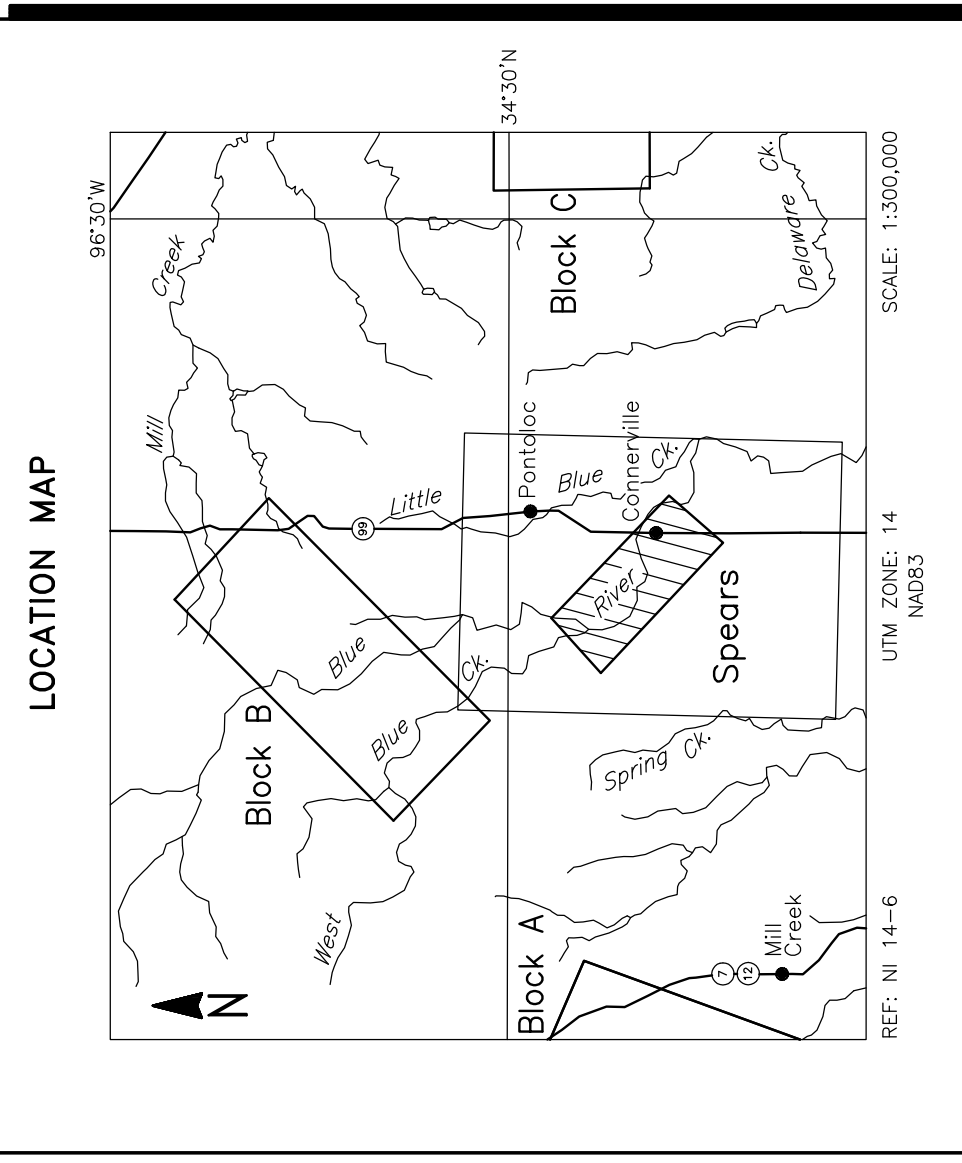
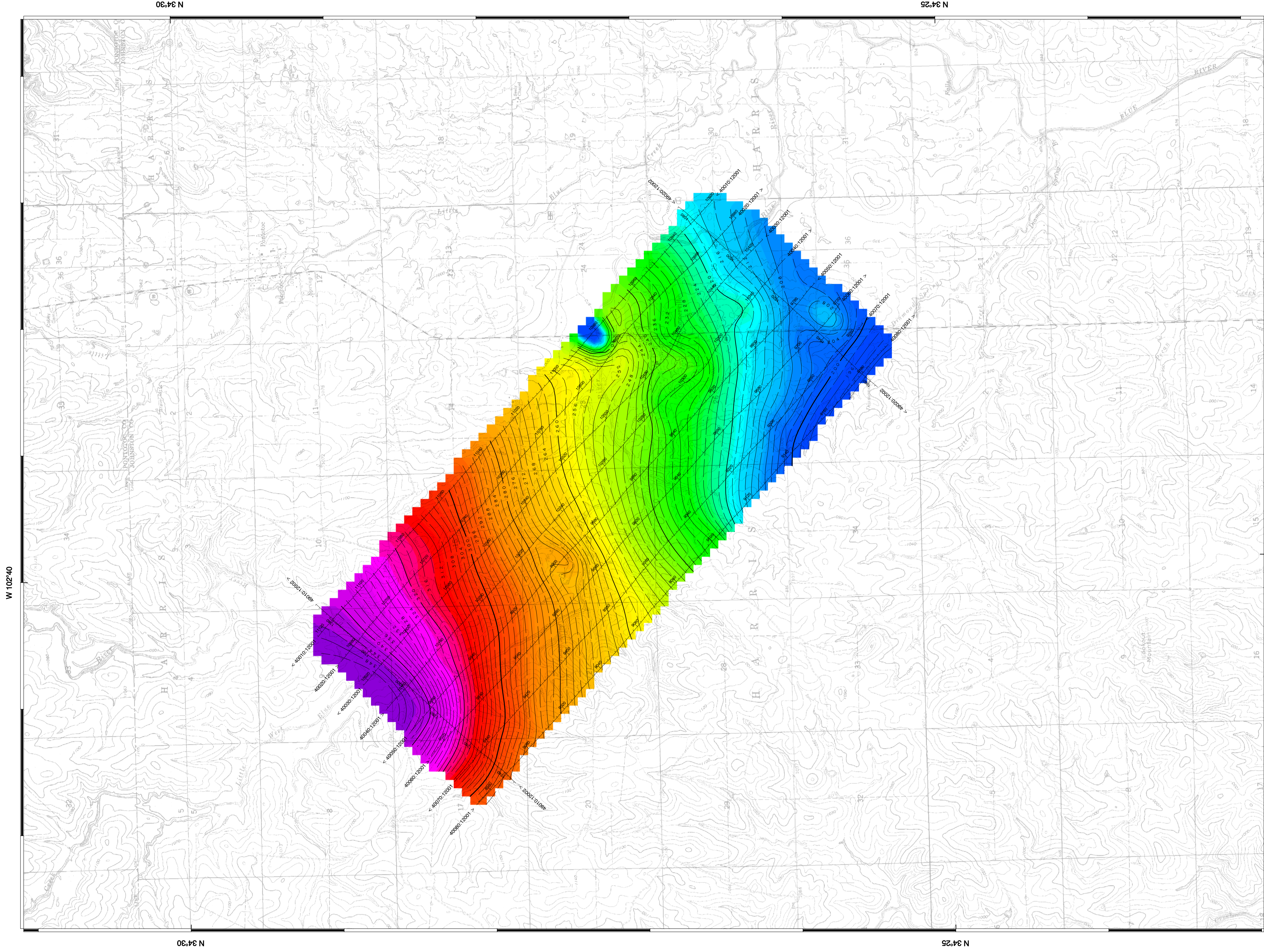
**FLIGHT LINES**



**RESIDUAL MAGNETIC FIELD CONTOURS**



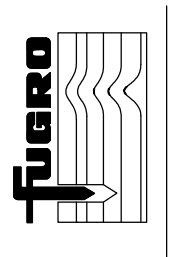
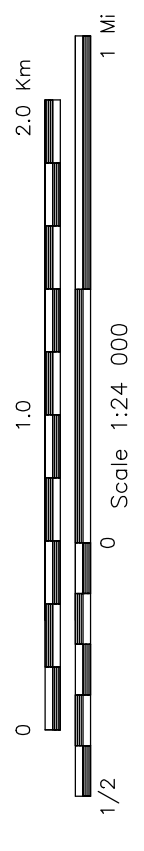
Magnetic inclination within the survey area: 63 degrees N  
 Magnetic declination within the survey area: 4 degrees E



**U.S. GEOLOGICAL SURVEY**  
 Arbuckle Simpson Aquifer Spears Block, Oklahoma

**RESIDUAL MAGNETIC FIELD**  
 IGRF Removed

FUGRO RESOLVE SURVEY REF: NI 14-6 GEOFYSICIST:  
 DATE: MARCH, 2007 JOB: 06079 SHEET: 1  
 Fugro Airborne Surveys



**FUGRO AIRBORNE SURVEYS**