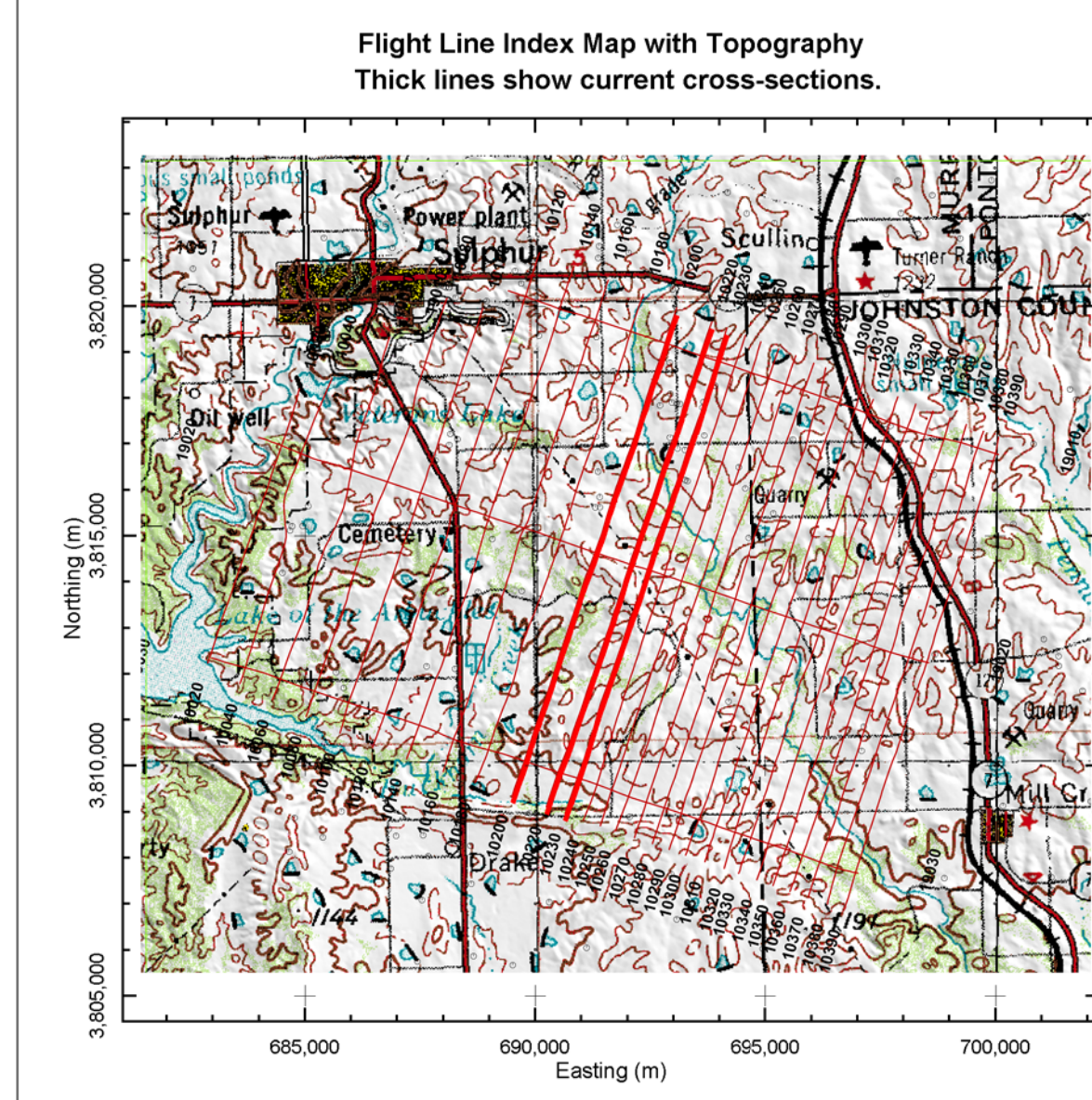
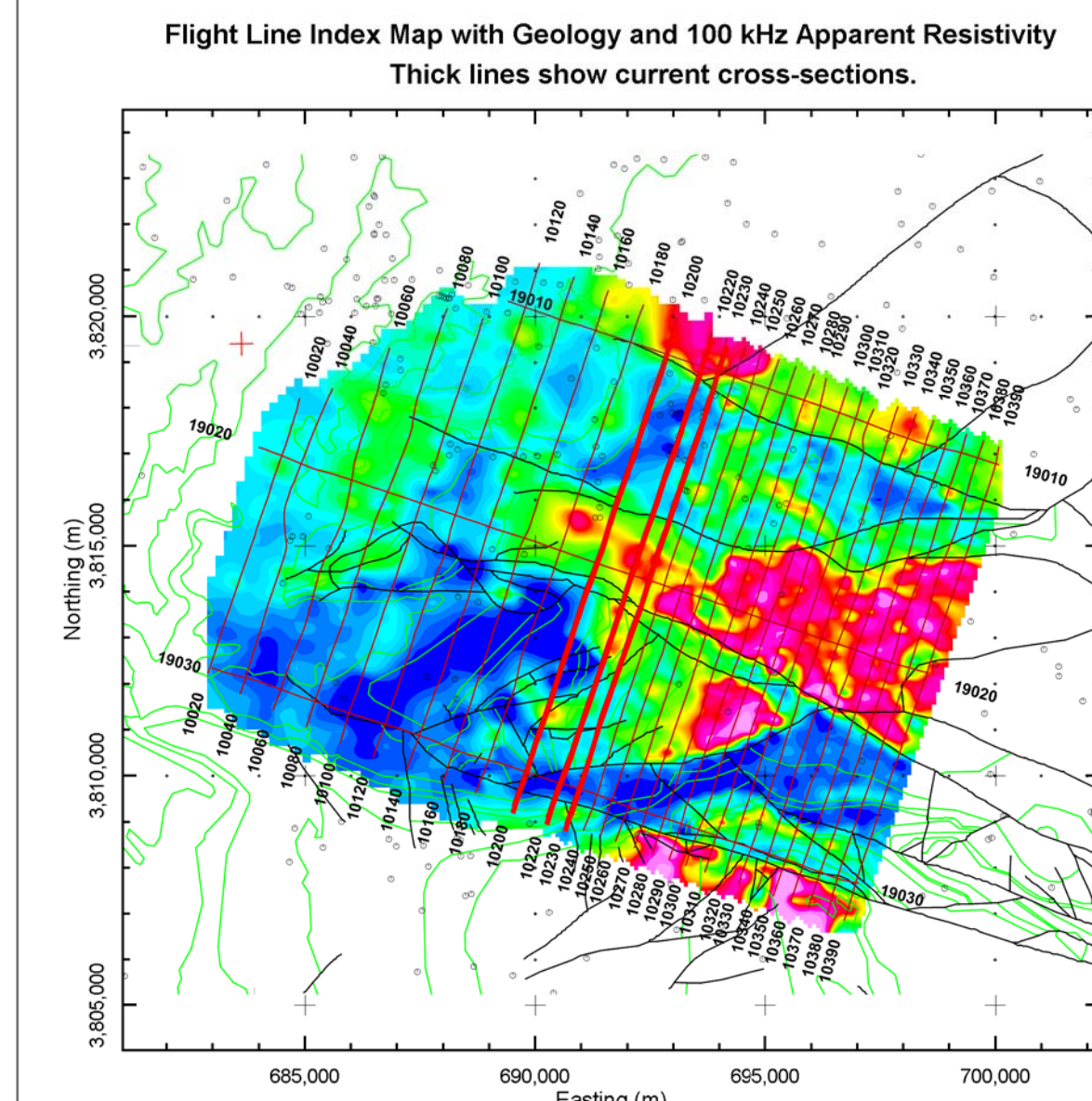
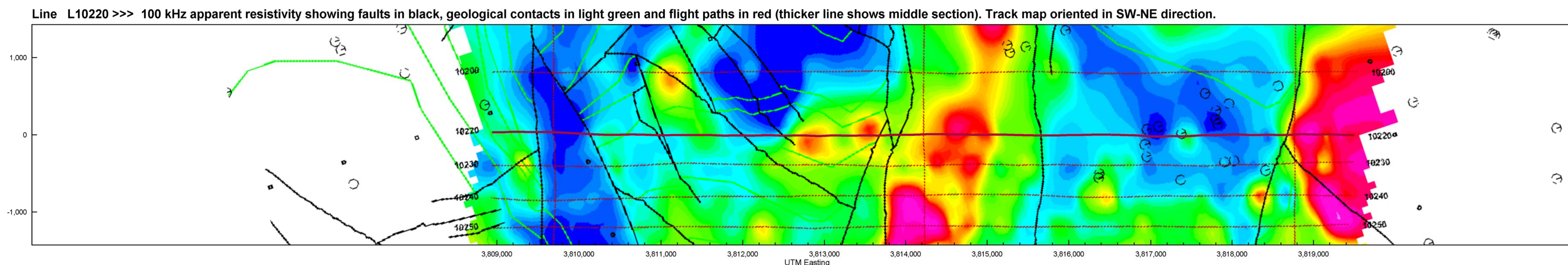
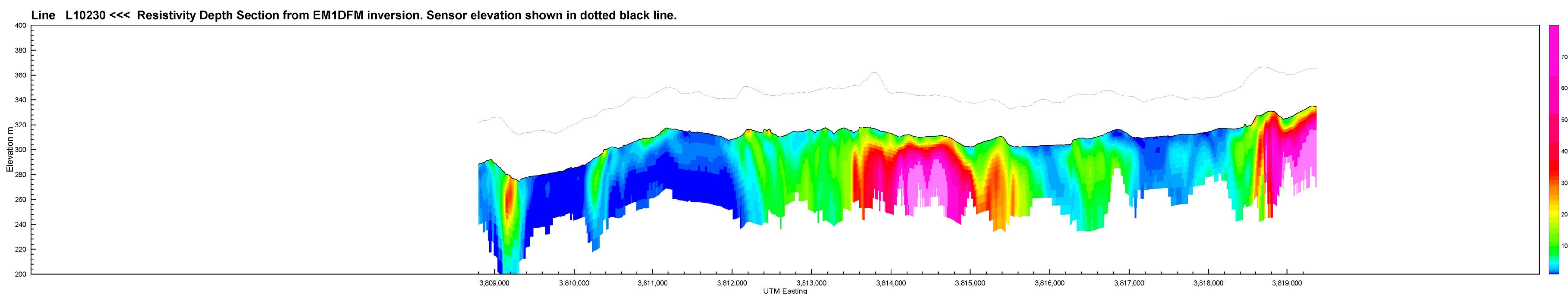
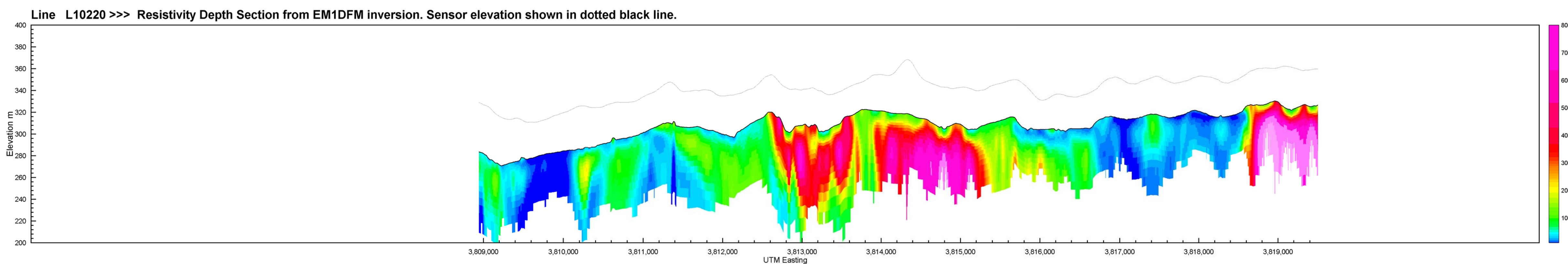
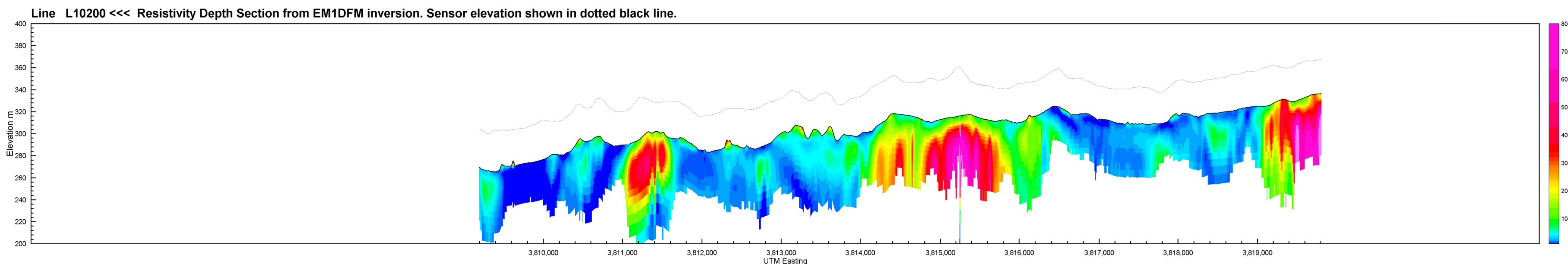
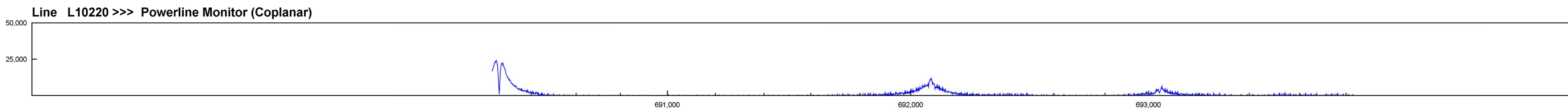


# Helicopter Electromagnetic Resistivity Depth Sections

## Middle Line: L10220



## HUNTON ANTICLINE, OKLAHOMA Arbuckle-Simpson Aquifer - BLOCK A

HELICOPTER ELECTROMAGNETIC SURVEY  
MARCH 2007 FUGRO AIRBORNE

RESISTIVITY DEPTH SECTIONS



Funding for Additional Flight Lines  
Provided by National Park Service

UNITED STATES GEOLOGICAL SURVEY

