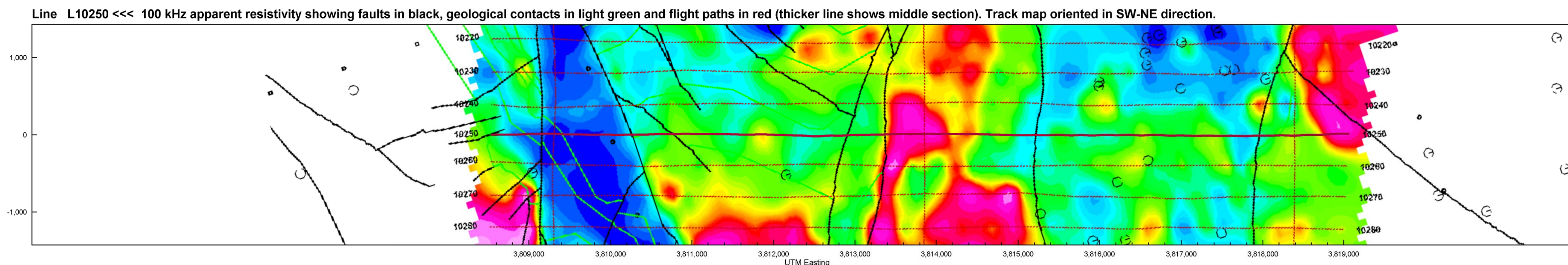
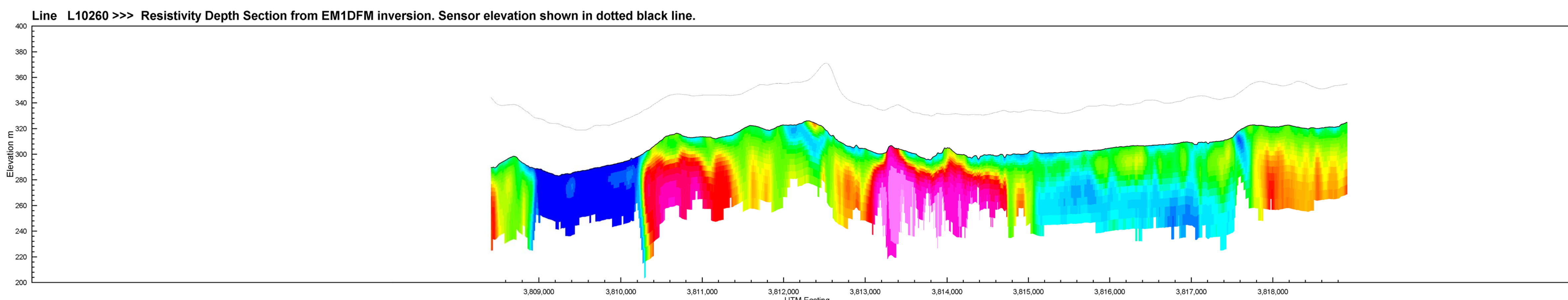
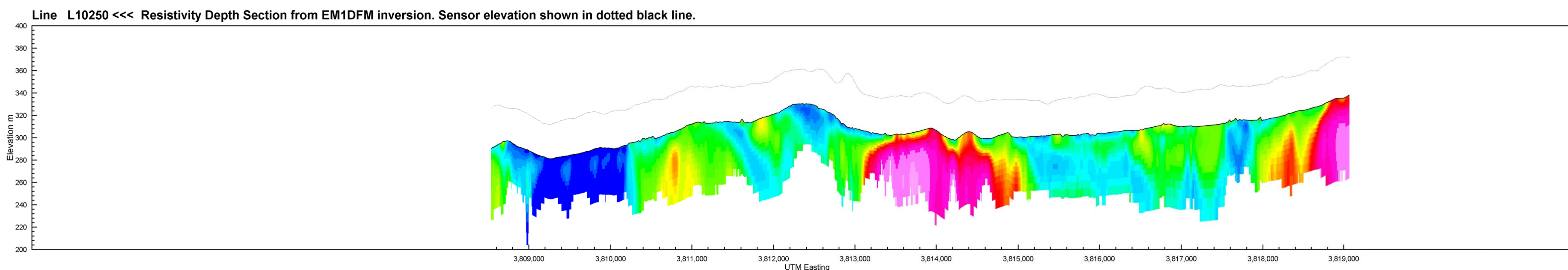
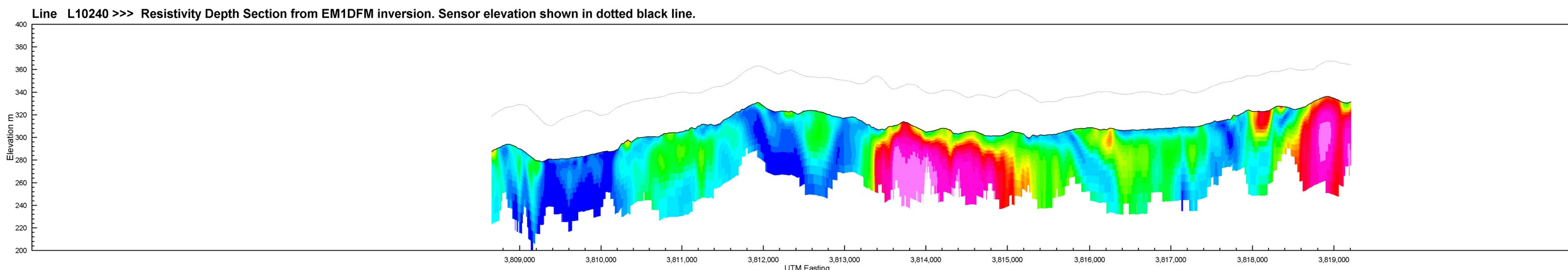
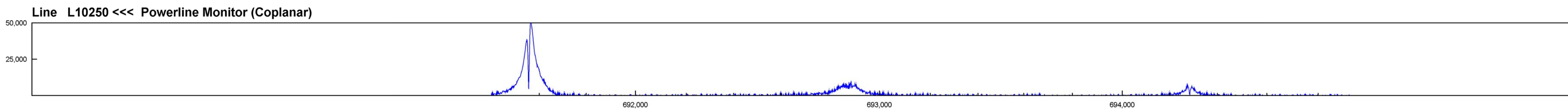
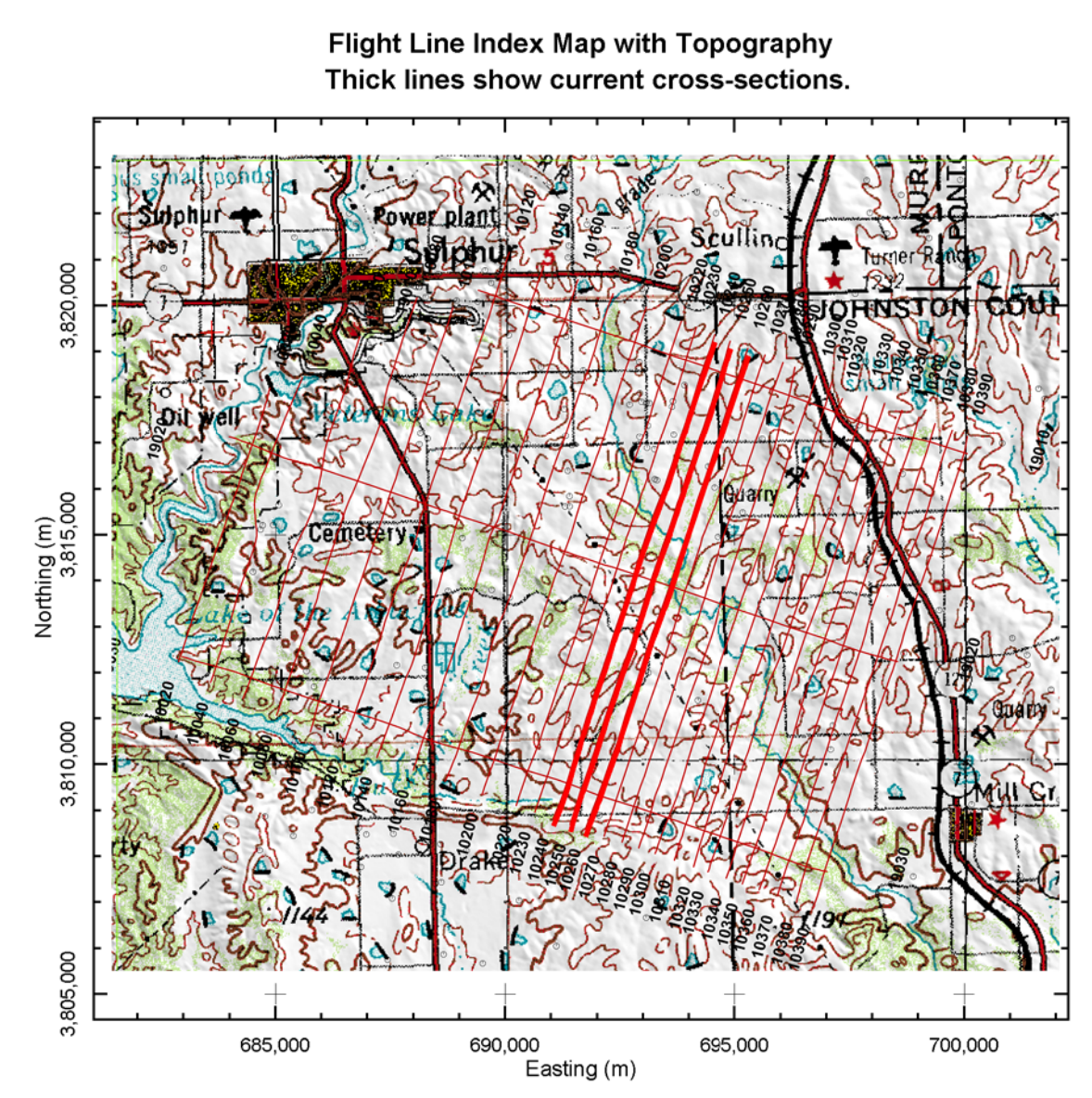
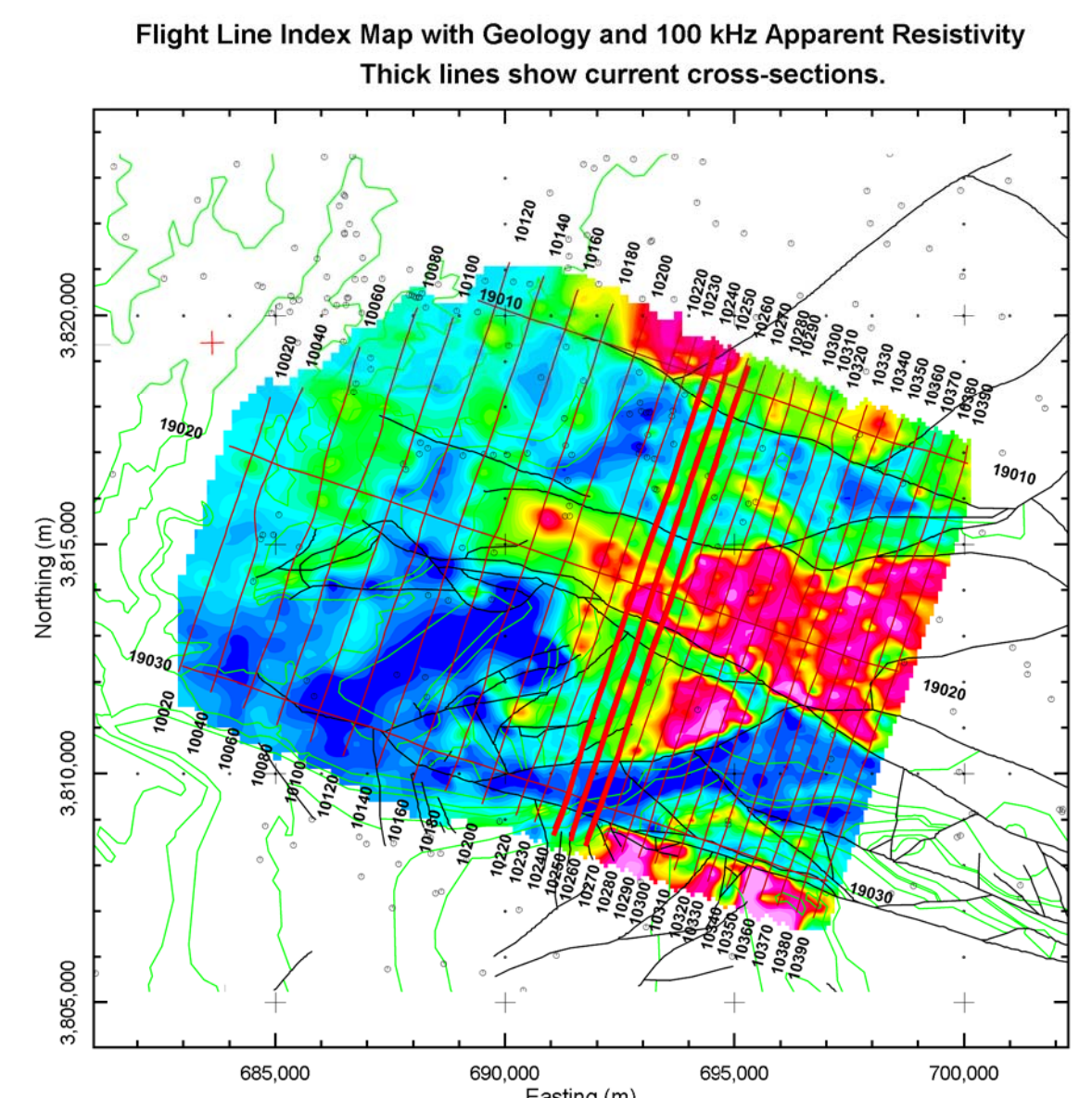


Helicopter Electromagnetic Resistivity Depth Sections



Middle Line: L10250



HUNTON ANTICLINE, OKLAHOMA Arbuckle-Simpson Aquifer - BLOCK A

HELICOPTER ELECTROMAGNETIC SURVEY
MARCH 2007 FUGRO AIRBORNE

RESISTIVITY DEPTH SECTIONS



Funding for Additional Flight Lines
Provided by National Park Service

UNITED STATES GEOLOGICAL SURVEY

