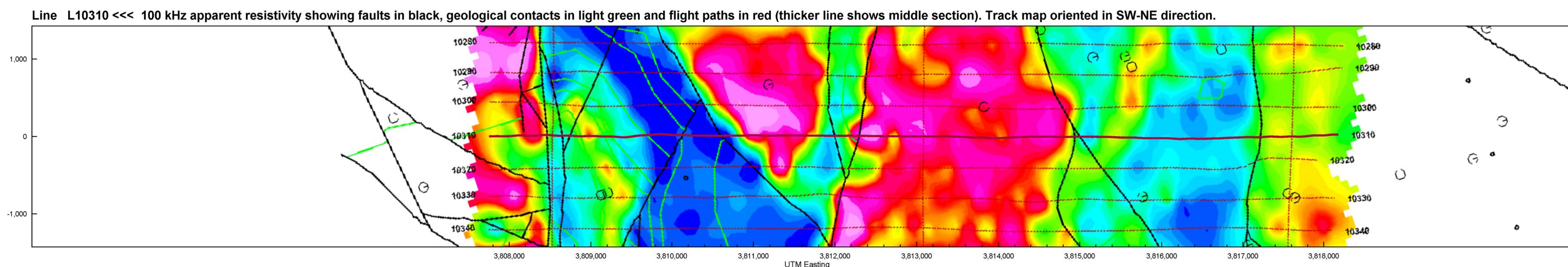
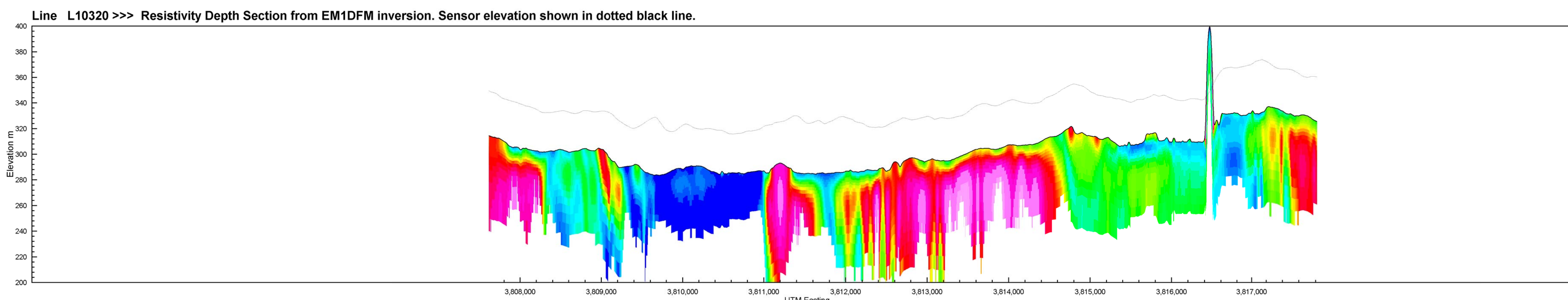
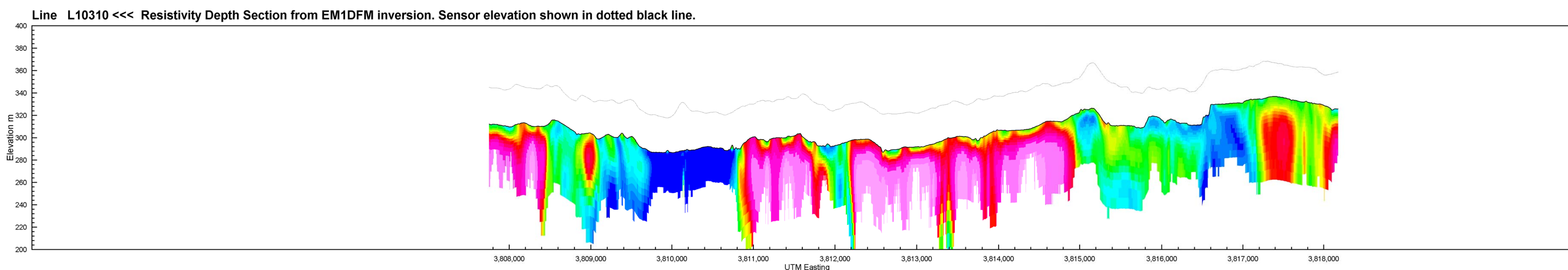
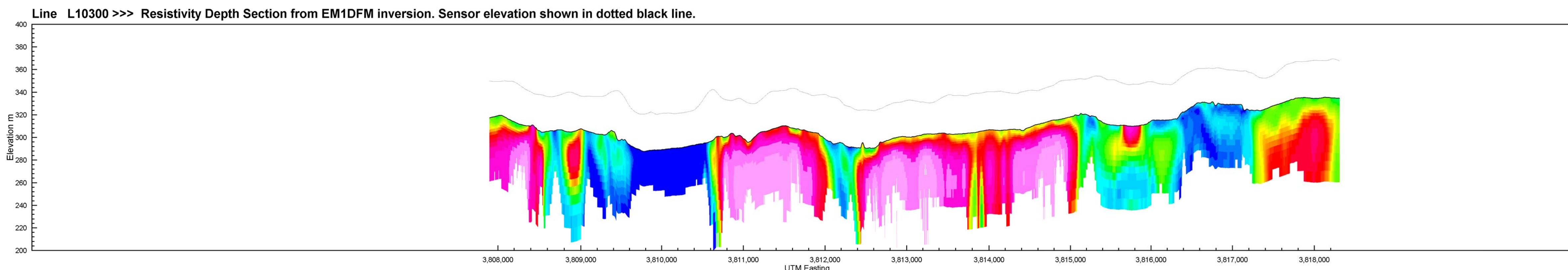
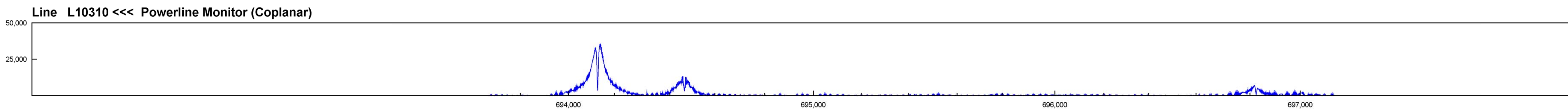
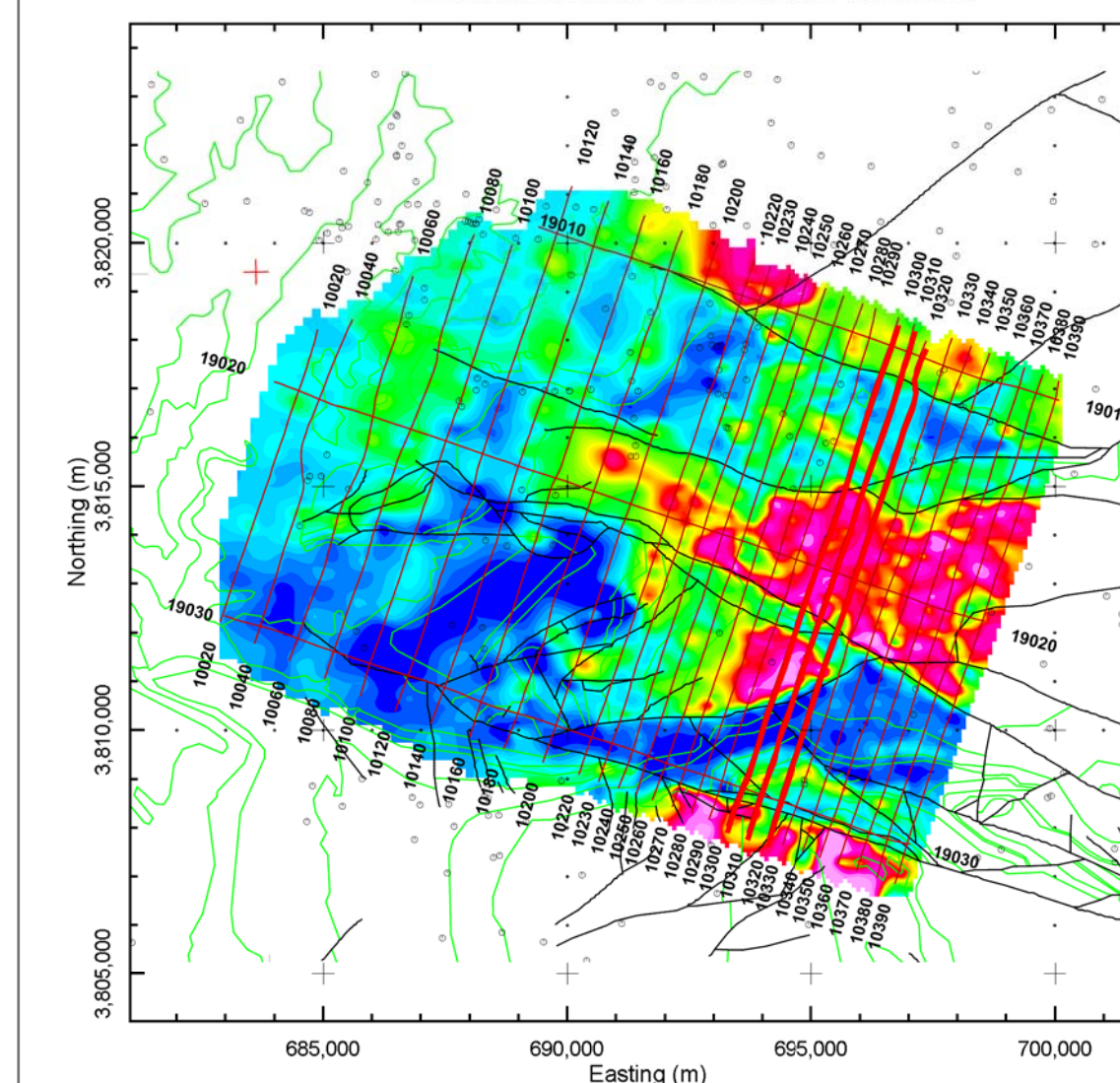


Helicopter Electromagnetic Resistivity Depth Sections

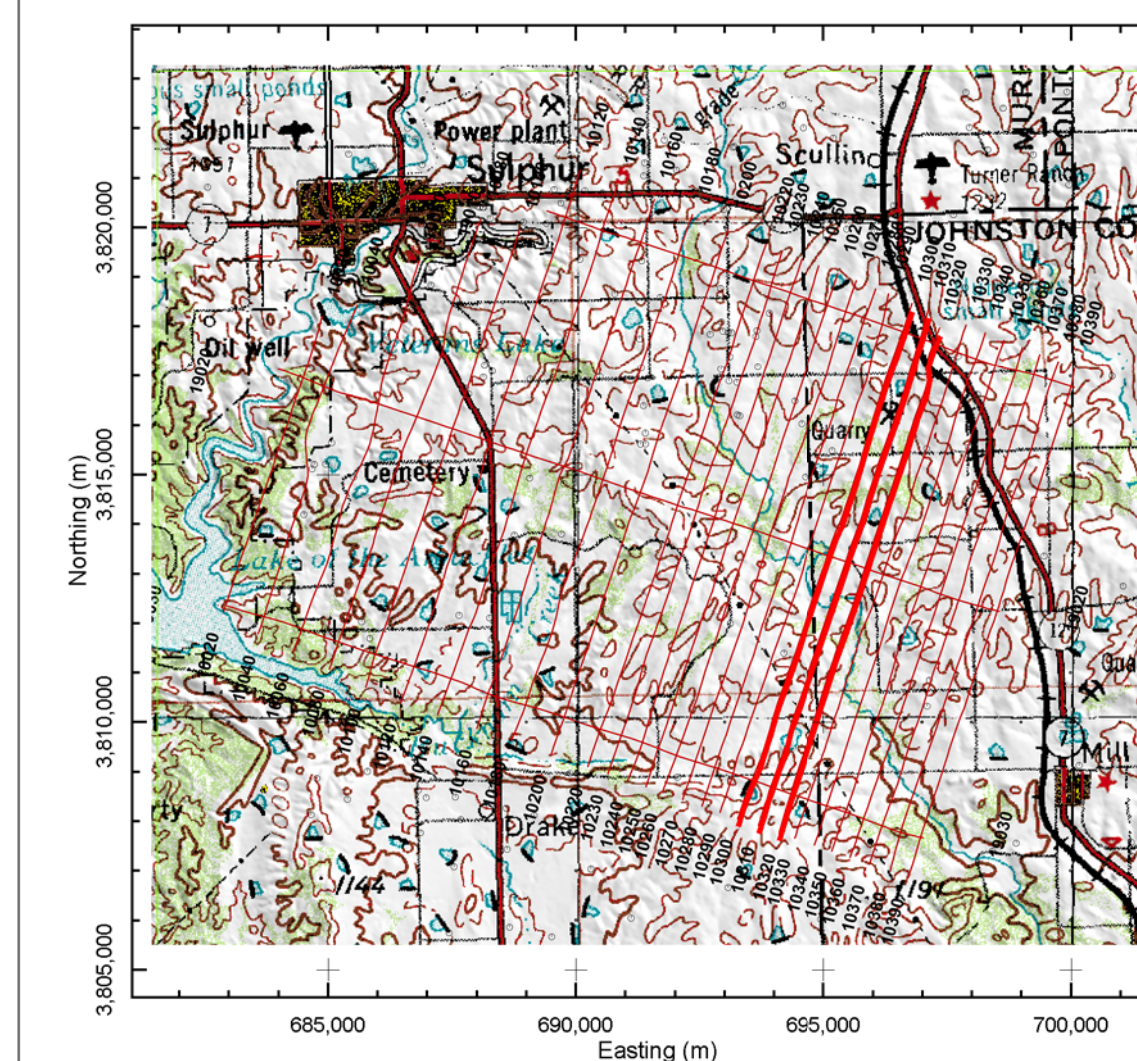


Middle Line: L10310

Flight Line Index Map with Geology and 100 kHz Apparent Resistivity
Thick lines show current cross-sections.



Flight Line Index Map with Topography
Thick lines show current cross-sections.



HUNTON ANTICLINE, OKLAHOMA Arbuckle-Simpson Aquifer - BLOCK A

HELICOPTER ELECTROMAGNETIC SURVEY
MARCH 2007 FUGRO AIRBORNE

RESISTIVITY DEPTH SECTIONS



Funding for Additional Flight Lines
Provided by National Park Service

UNITED STATES GEOLOGICAL SURVEY

