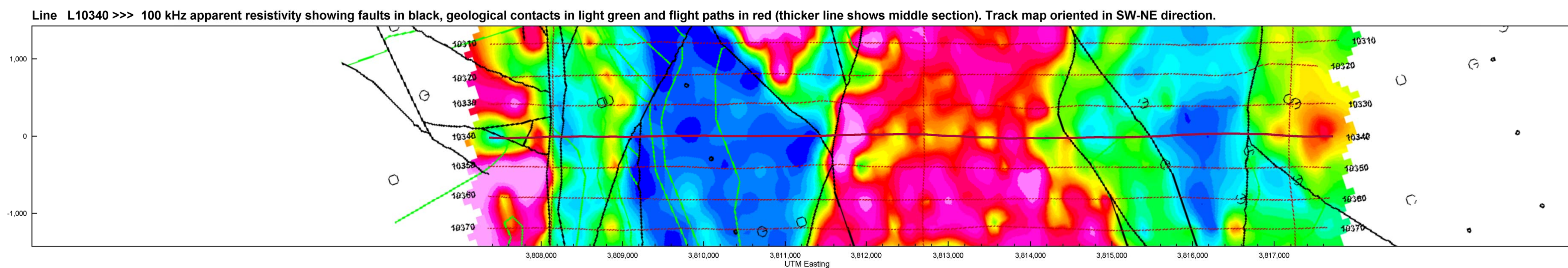
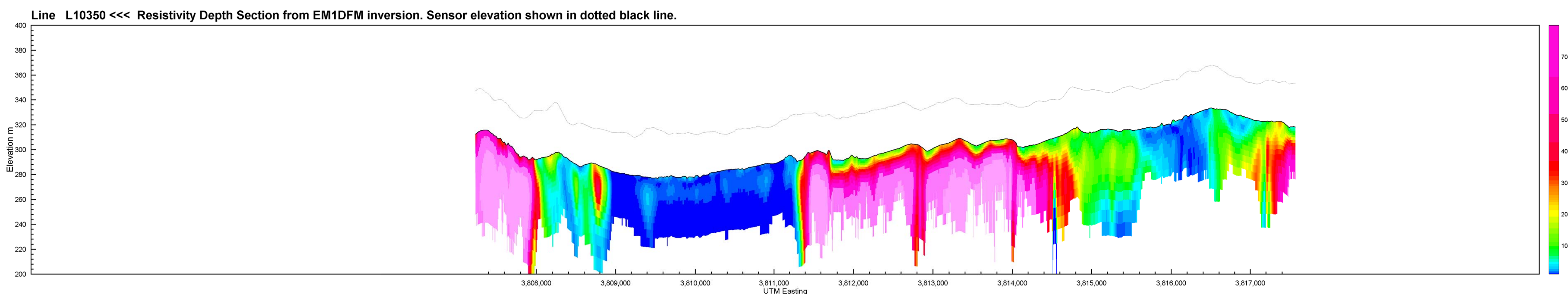
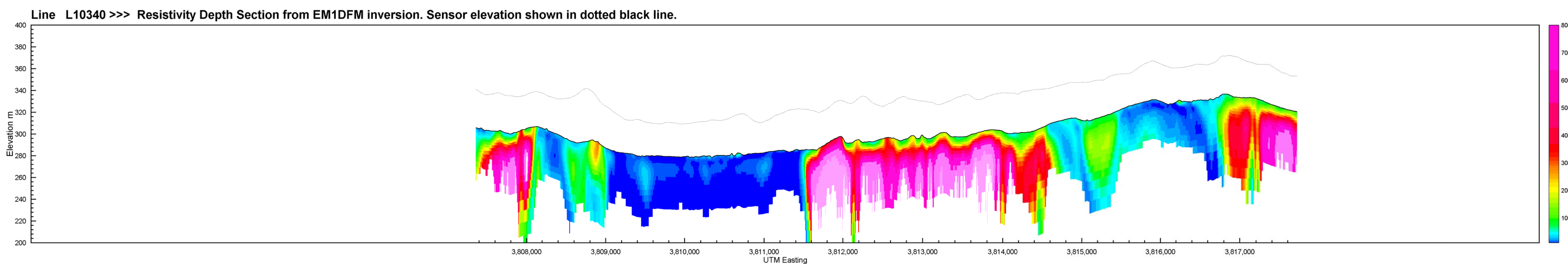
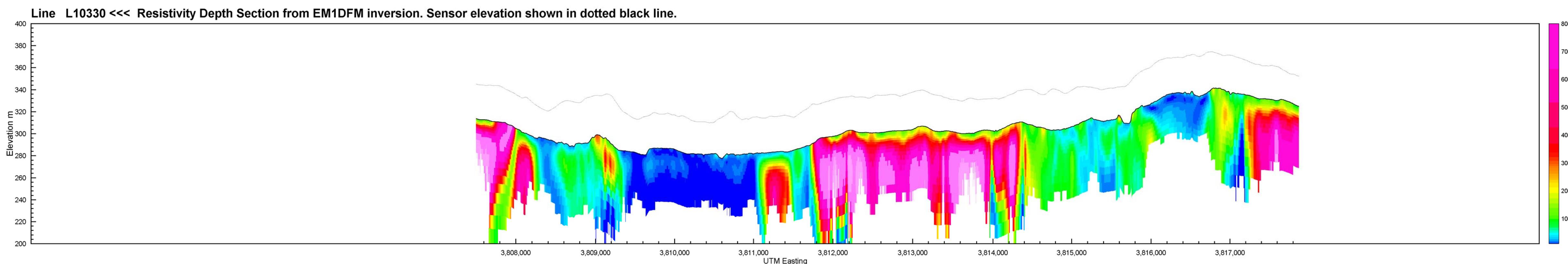
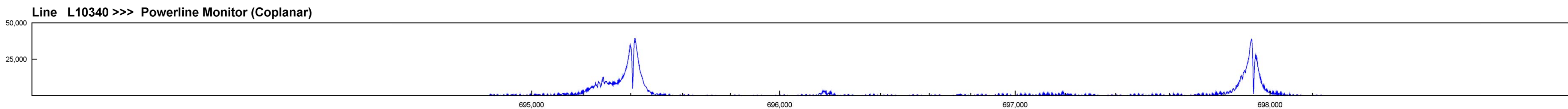
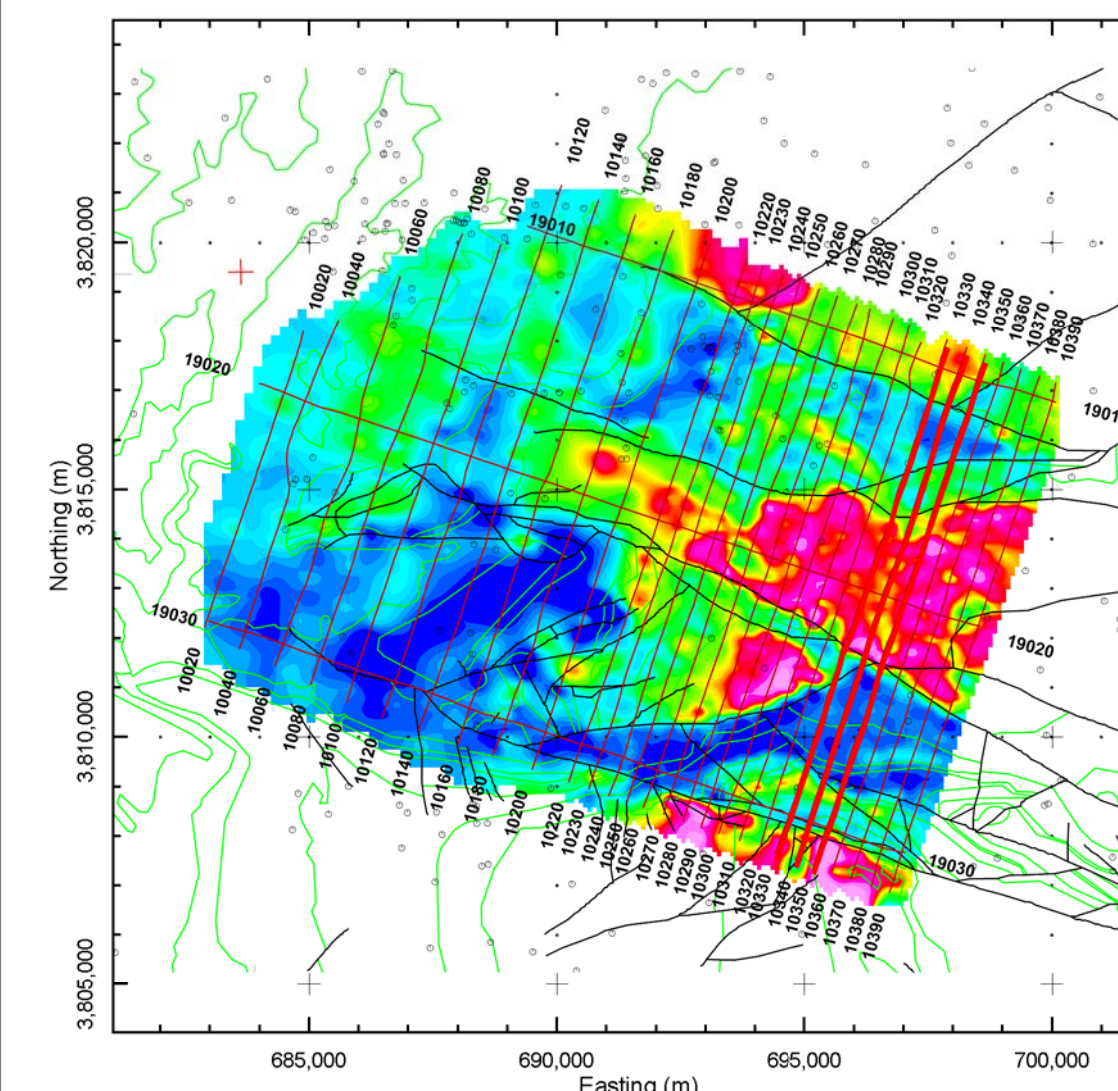


Helicopter Electromagnetic Resistivity Depth Sections

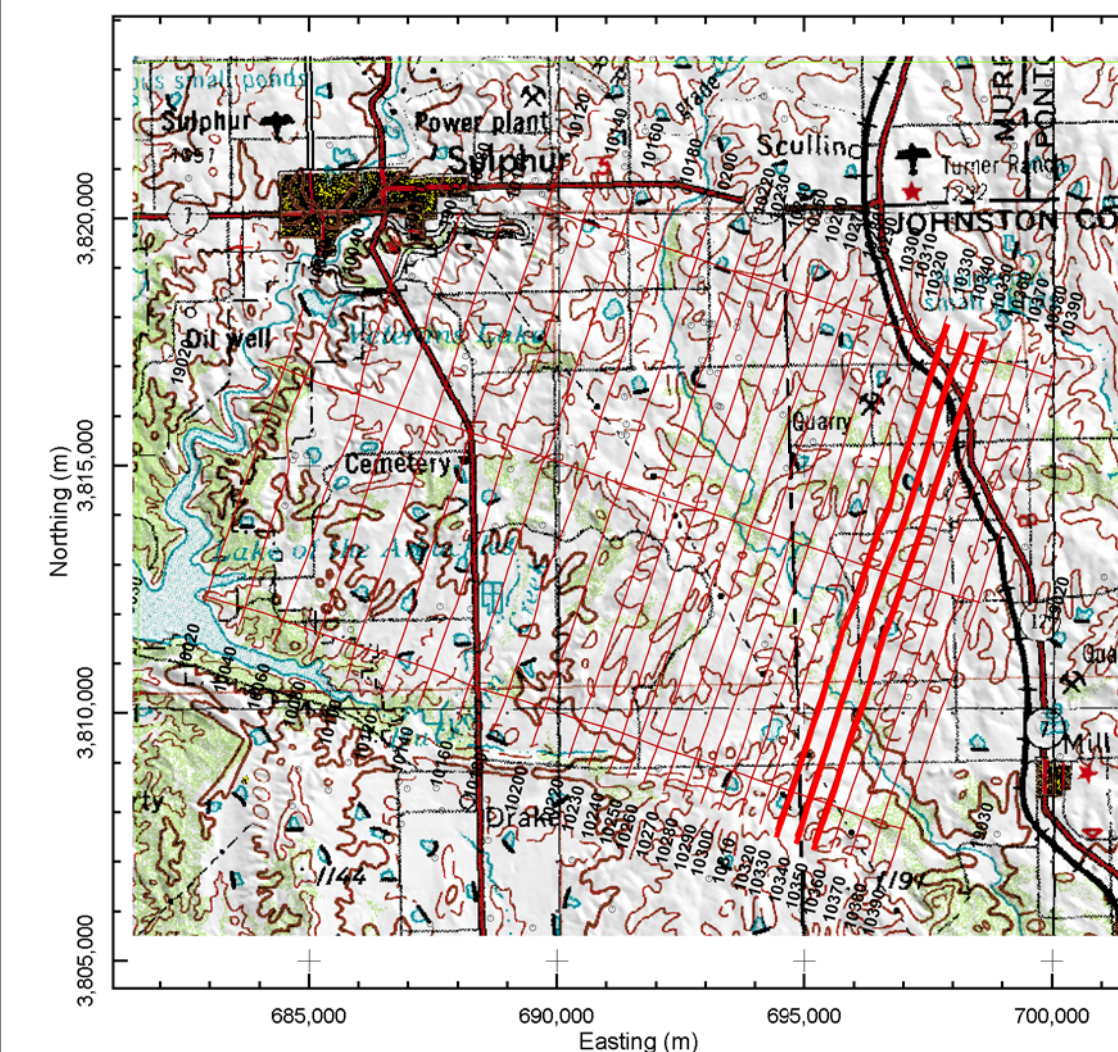
Middle Line: L10340



Flight Line Index Map with Geology and 100 kHz Apparent Resistivity



Flight Line Index Map with Topography



HUNTON ANTICLINE, OKLAHOMA

Arbuckle-Simpson Aquifer - BLOCK A

HELICOPTER ELECTROMAGNETIC SURVEY
MARCH 2007 FUGRO AIRBORNE

RESISTIVITY DEPTH SECTIONS



Funding for Additional Flight Lines
Provided by National Park Service

UNITED STATES GEOLOGICAL SURVEY

