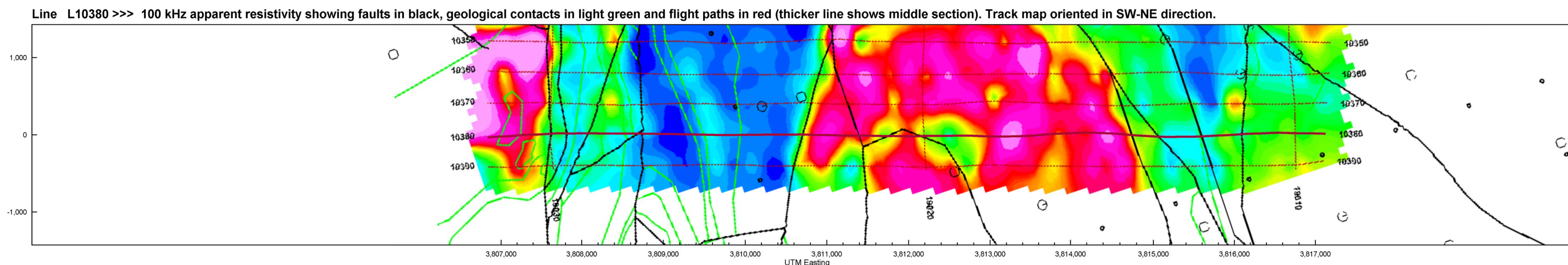
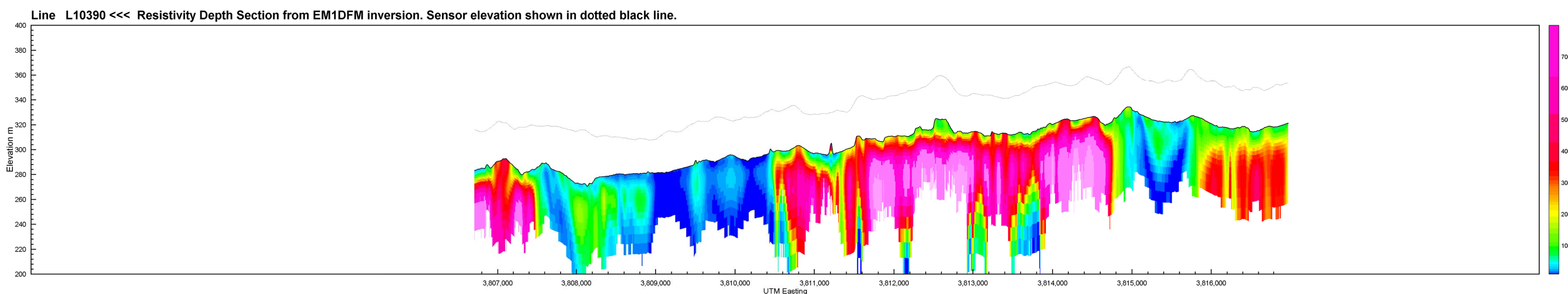
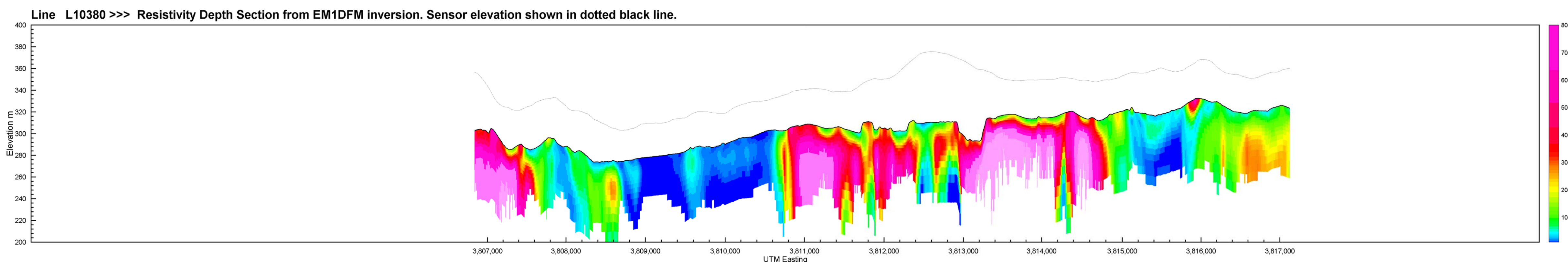
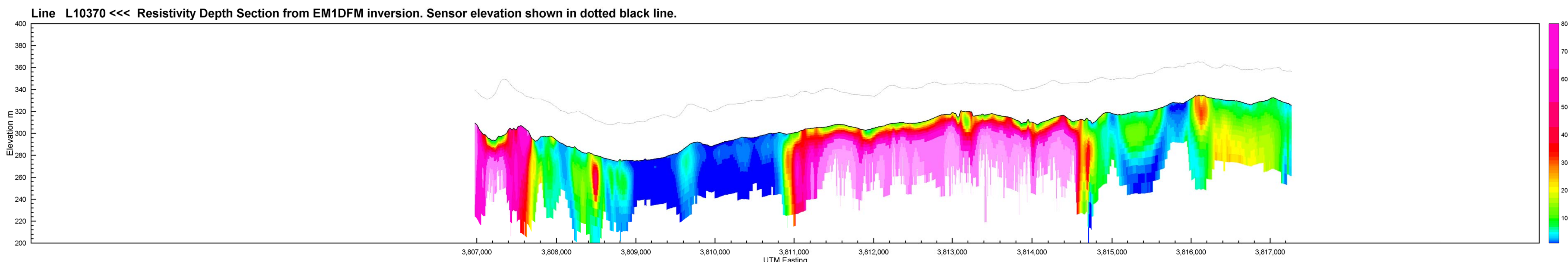
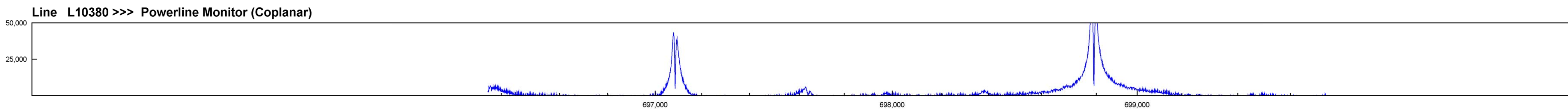
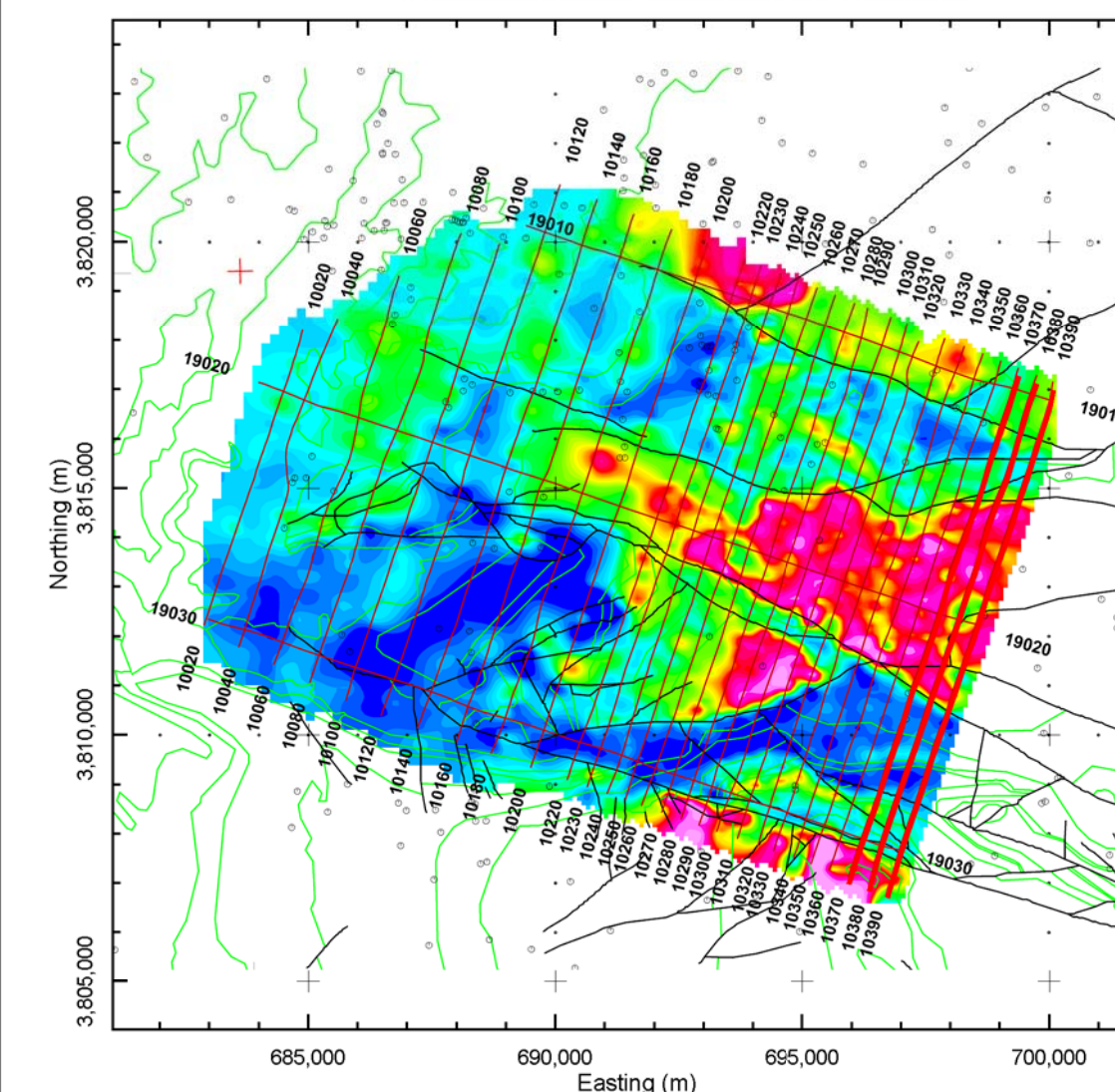


# Helicopter Electromagnetic Resistivity Depth Sections

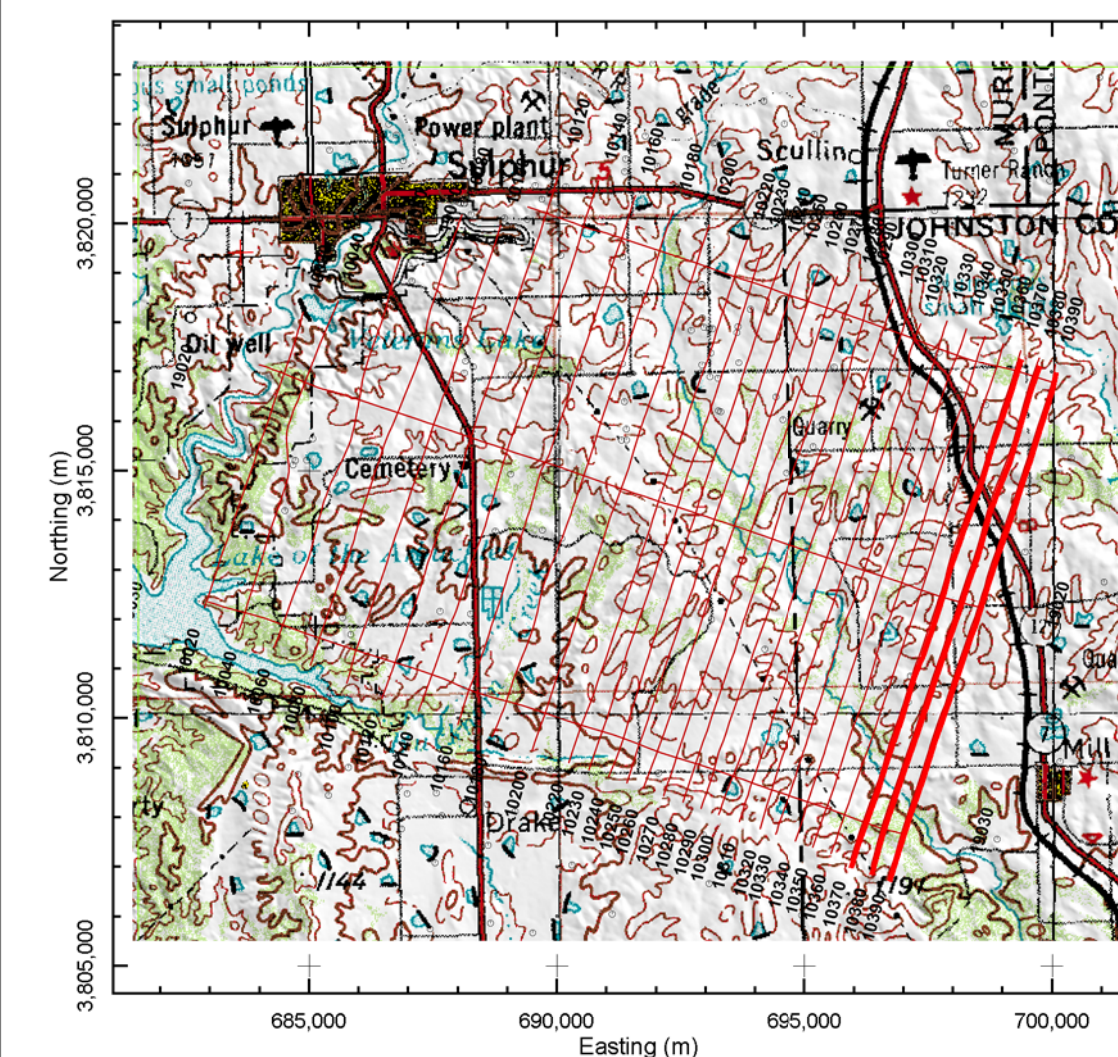
Middle Line: L10380



Flight Line Index Map with Geology and 100 kHz Apparent Resistivity  
Thick lines show current cross-sections.



Flight Line Index Map with Topography  
Thick lines show current cross-sections.



## HUNTON ANTICLINE, OKLAHOMA Arbuckle-Simpson Aquifer - BLOCK A

HELICOPTER ELECTROMAGNETIC SURVEY  
MARCH 2007 FUGRO AIRBORNE

RESISTIVITY DEPTH SECTIONS



Funding for Additional Flight Lines  
Provided by National Park Service

UNITED STATES GEOLOGICAL SURVEY

