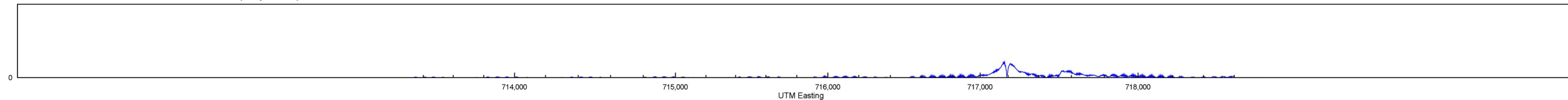
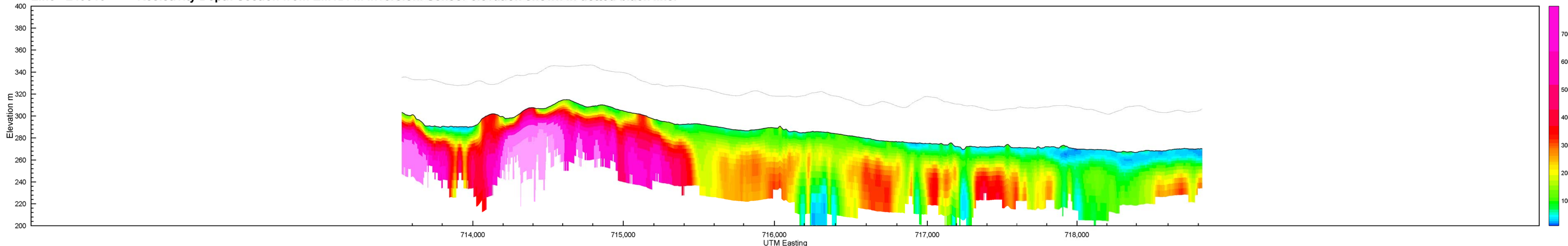


Helicopter Electromagnetic Resistivity Depth Sections

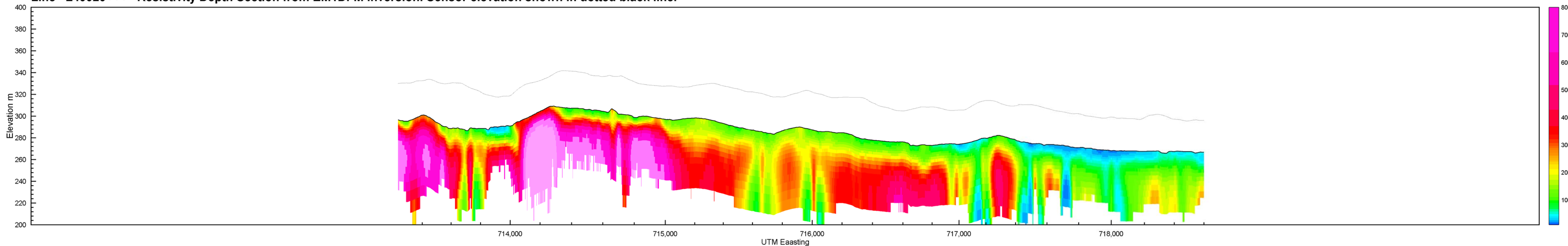
Line L40020 >>> Powerline Monitor (Coplanar)



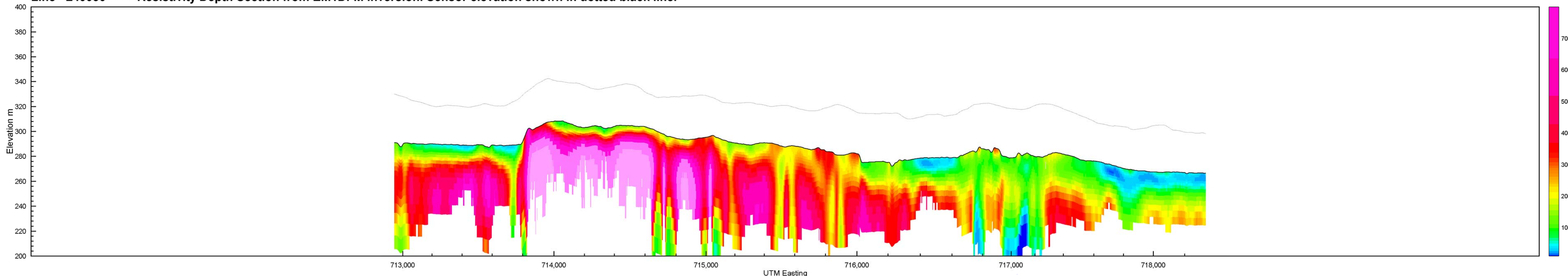
Line L40010 <<< Resistivity Depth Section from EM1DFM inversion. Sensor elevation shown in dotted black line.



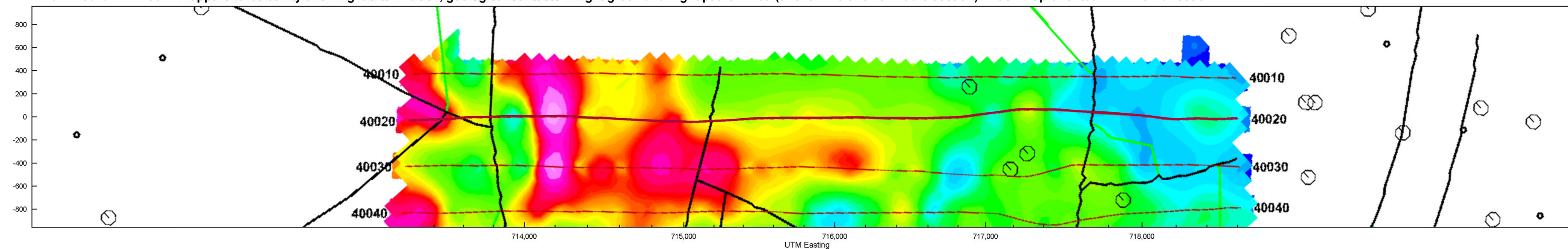
Line L40020 >>> Resistivity Depth Section from EM1DFM inversion. Sensor elevation shown in dotted black line.



Line L40030 <<< Resistivity Depth Section from EM1DFM inversion. Sensor elevation shown in dotted black line.

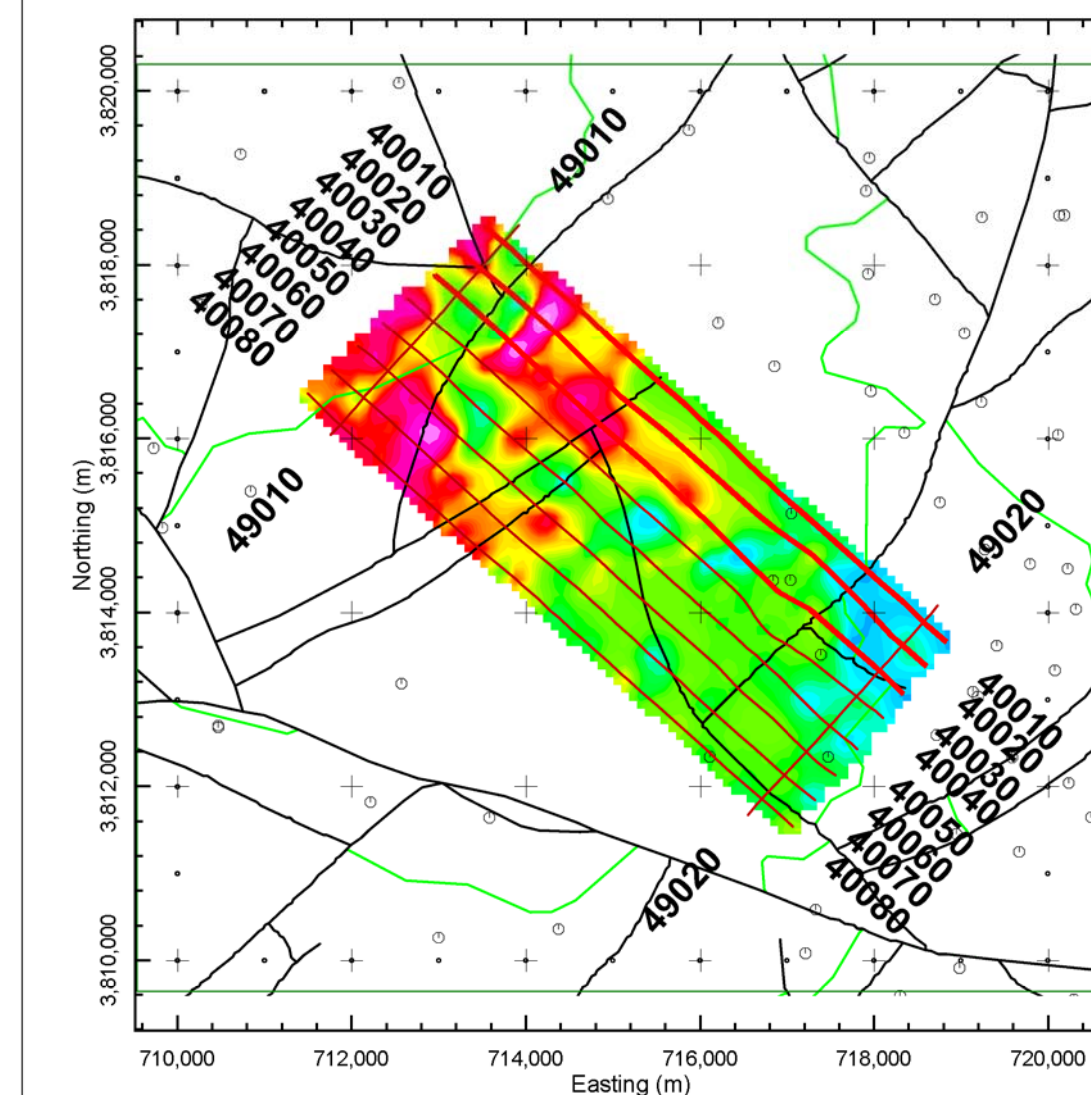


Line L40020 >>> 100 kHz apparent resistivity showing faults in black, geological contacts in light green and flight paths in red (thicker line shows middle section). Track map oriented in NW-SE direction.

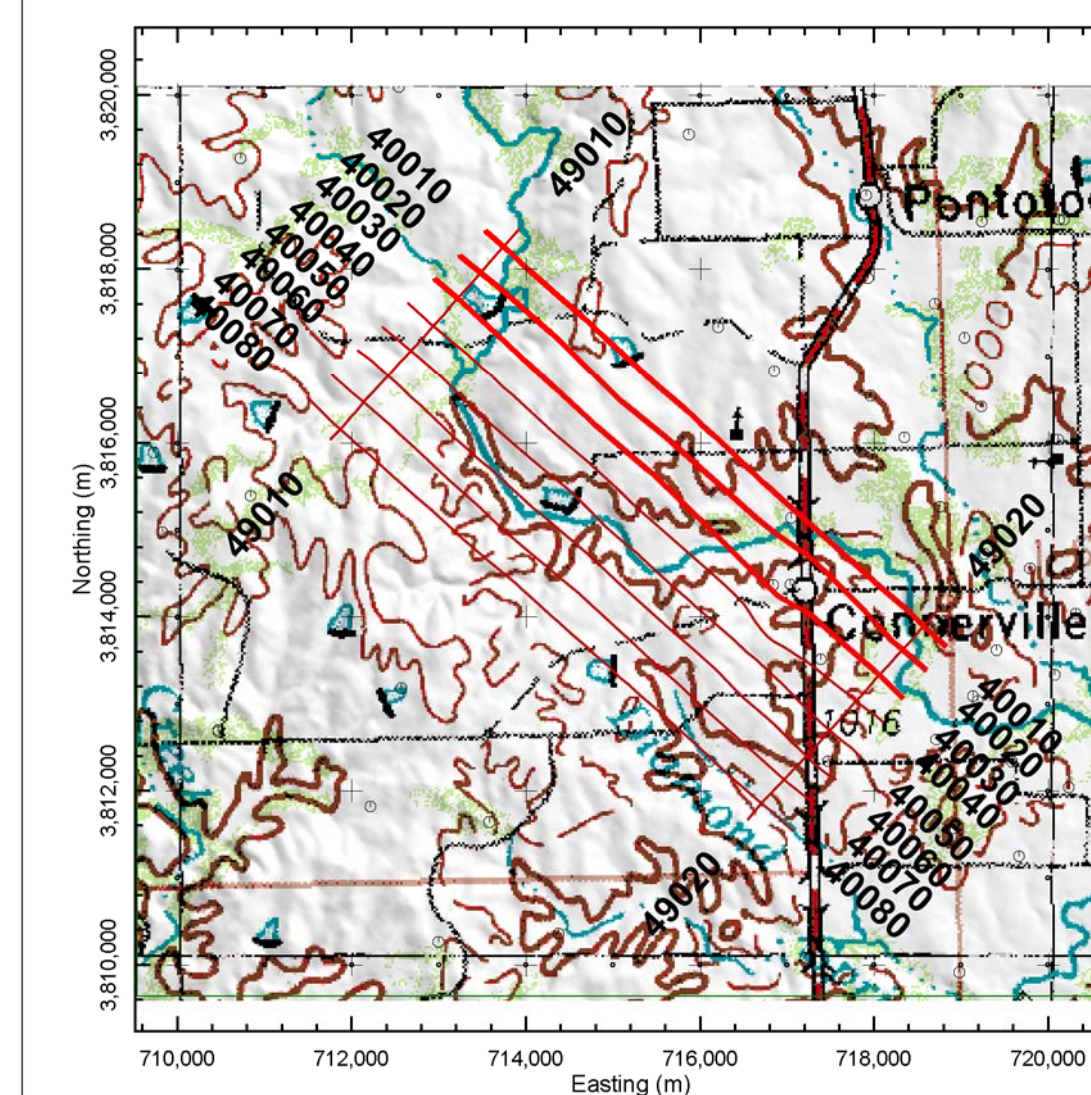


Middle Line: L40020

Flight Line Index Map with Geology and 100 kHz Apparent Resistivity
Thick lines show current cross-sections.



Flight Line Index Map with Topography
Thick lines show current cross-sections.



HUNTON ANTICLINE, OKLAHOMA Arbuckle-Simpson Aquifer - BLOCK D

HELICOPTER ELECTROMAGNETIC SURVEY
MARCH 2007 FUGRO AIRBORNE

RESISTIVITY DEPTH SECTIONS



Funding for Electromagnetic Depth Sections
Provided by Oklahoma Water Resources Board

UNITED STATES GEOLOGICAL SURVEY

