

PHOTO-LOG
CORE SNC007*

EXPLANATION

▲ = R radiocarbon sample

Carbonates

- Abundant 5-10 mm nodules of CO₃
- - - A few ~1 mm blebs of CO₃
- x Blebs of CO₃
- x Scattered nodules of CO₃
- No reaction to 10% HCL in matrix
- Sandy section

ABBREVIATIONS

- Colors**
- BL Black(10YR2/1);
 - VDG V. Dk Gray (10YR3/1);
 - VDGB V. Dk Gray Brown (2.5YR3/2-3/3);
 - VDB V. Dk Brown(10YR2/2);
 - DOB Dk. Olive Brown(2.5YR3/3);
 - OB Olive Brown(2.5YR4/3-4/4);
 - LOB Light Olive Brown(2.5YR5/4);
 - YB Yellow Brown(10YR5/6);
 - GrBI Greenish black (Gley 3/10Y);
 - DGrG Dark greenish gray (Gley 3-4/5G-5GY)

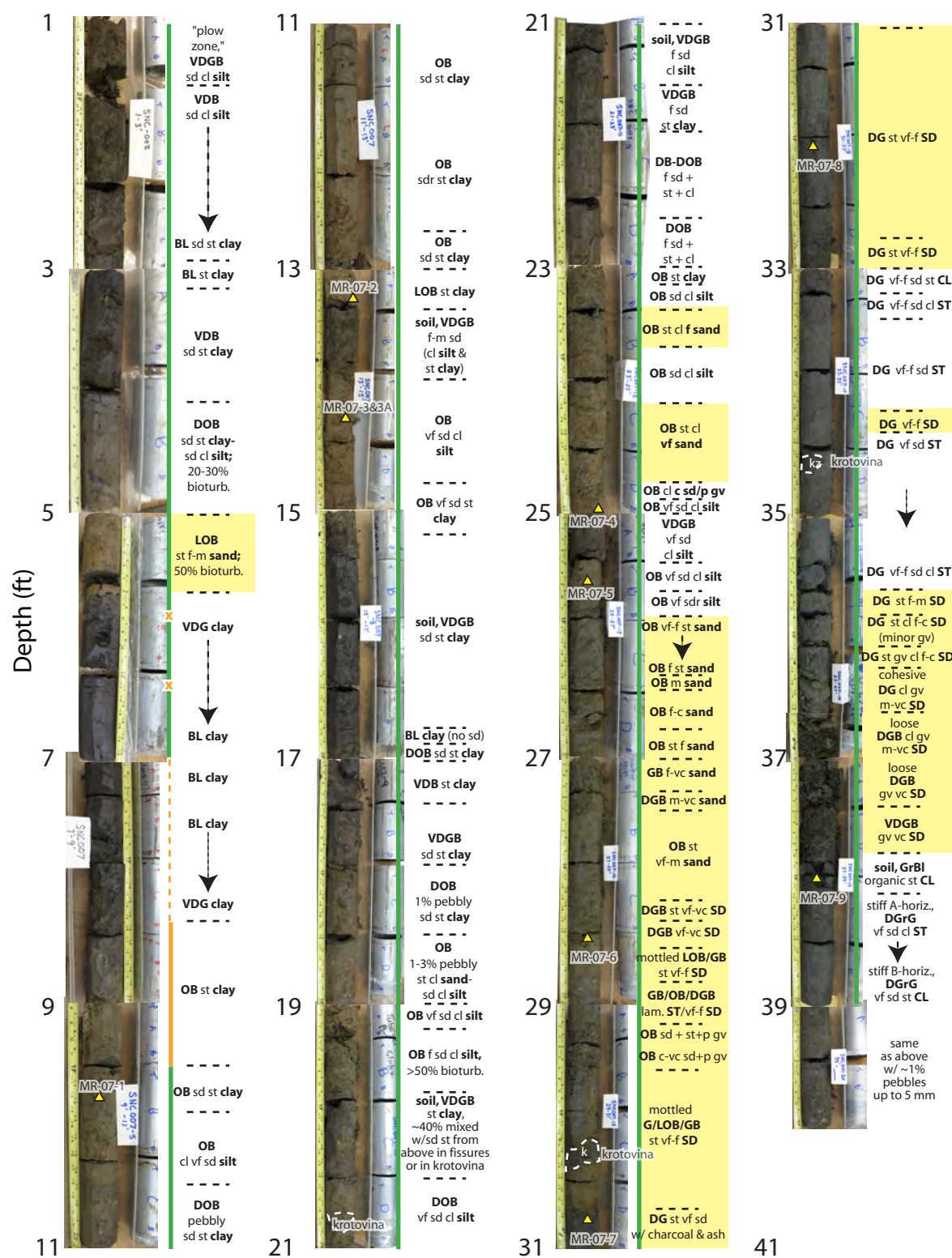
Texture (visual)

- cl clay
- st silt
- sd sand
- clr clayier
- str siltier
- sdr sdr

- f fine
- vf v.fine
- m med
- c coarse

- ↓ gradational change

*Note: Laboratory analysis of this core appears in Bennett and others (2011); see accompanying pamphlet for reference



Logs and Data from Trenches
Across and Near the
Green Valley Fault
at the Mason Road Site,
Fairfield, Solano County,
California, 2006-2009
By
James J. Lienkaemper, Robert R. Sickler,
Shannon A. Mahan, Johnathan Brown,
Liam M. Reidy, and Mindy A. Kimball
2012

This map was printed on an electronic plotter directly from digital files. Dimensional calibration may vary between electronic plotters and between X and Y directions on the same plotter, and paper may change size due to atmospheric conditions; therefore, scale and proportions may not be true on plots of this map.

For sale by U.S. Geological Survey, Information Services, Box 25286, Federal Center, Denver, CO 80225, 1-888-ASK-USGS

Available on World Wide Web at <http://pubs.usgs.gov/of/2012/1011/>

Any use of trade, firm, or product names in this publication is for descriptive purposes only and does not imply endorsement by the U.S. Government