

Appendix 1. Daily total precipitation measured by the U.S. Geological Survey at site ST1A at the Lake Wheeler Road Field Laboratory study area in North Carolina during October 2009 to January 2011



0208762750 UNNAMED TRIB TO SWIFT CREEK NEAR YATES MILL POND, NC

Neuse Basin
Upper Neuse Subbasin

CLIMATOLOGICAL RECORDS

LOCAL NAME.--ST1A

LOCATION.--Lat 35°43'55", long 78°40'34" referenced to North American Datum of 1983, Wake County, NC, Hydrologic Unit 03020201, 0.4 mi east of Secondary Road 1371 and approximately 1.1 mi northeast of Yates Mill Pond.

PERIOD OF RECORD.--October 2009 to January 2011.

INSTRUMENTATION.--Tipping-bucket raingage. Satellite telemetry at site.

**PRECIPITATION, TOTAL, INCHES
WATER YEAR OCTOBER 2009 TO SEPTEMBER 2010
DAILY SUM VALUES**

[---, not available]

Day	Oct	Nov	Dec	Jan	Feb	Mar	Apr	May	Jun	Jul	Aug	Sep
1	---	0.47	0.00	0.01	---	0.00	0.00	0.00	1.50	0.00	0.15	0.00
2	---	0.00	2.25	0.00	---	0.22	0.00	0.00	---	0.00	0.00	0.00
3	---	0.00	0.00	0.00	---	0.21	0.00	0.05	0.00	0.00	0.00	0.00
4	---	0.00	0.02	0.00	0.00	0.00	0.00	0.00	0.00	0.00	0.00	0.00
5	---	0.01	0.33	0.00	1.85	0.00	0.00	0.00	0.09	0.00	1.29	0.00
6	---	0.00	0.00	0.00	0.00	0.00	0.00	0.00	0.61	0.00	0.01	0.00
7	---	0.00	0.00	0.00	0.00	0.00	0.00	0.03	0.03	0.00	0.00	0.00
8	---	0.00	---	0.05	0.00	0.00	---	0.00	0.00	0.00	0.00	0.00
9	---	0.00	---	0.00	0.33	0.00	---	0.00	0.00	0.00	0.00	0.00
10	---	1.19	---	0.00	0.02	0.15	0.00	0.00	0.00	0.05	0.00	0.00
11	---	3.14	---	0.00	0.00	0.74	0.00	0.00	0.00	0.00	0.00	0.00
12	---	0.15	---	0.00	---	0.05	0.00	0.00	0.00	0.00	0.10	0.00
13	---	0.06	---	0.00	---	---	0.00	0.00	0.50	0.01	0.00	0.00
14	0.21	0.00	---	0.00	---	0.05	0.00	0.00	0.00	0.00	0.00	0.00
15	0.05	0.00	0.00	0.00	0.00	0.00	0.00	0.00	0.00	0.00	0.00	0.00
16	0.00	0.00	0.00	0.00	0.00	0.00	0.00	0.37	0.00	0.38	0.00	0.00
17	0.00	0.01	0.00	---	0.00	0.00	0.00	0.99	0.00	0.34	0.00	0.00
18	0.00	0.36	0.37	0.00	0.00	0.00	0.00	0.56	0.00	0.00	0.35	0.00
19	0.00	0.04	0.33	0.00	0.00	0.00	0.00	0.83	0.00	0.00	0.21	0.00
20	0.00	0.00	0.00	0.00	0.00	0.00	0.00	0.00	0.00	0.00	0.47	0.00
21	0.00	0.00	0.00	0.90	0.00	0.00	---	0.00	0.00	0.00	0.00	0.00
22	0.00	0.15	0.00	0.03	0.25	0.09	0.00	0.35	0.03	0.00	0.72	0.00
23	0.00	0.34	0.00	0.00	0.00	0.02	0.00	---	0.24	0.00	0.06	0.00
24	0.10	0.01	0.00	0.10	0.07	0.00	0.06	0.12	0.00	0.00	3.59	0.00
25	0.00	0.01	0.68	1.31	0.04	0.00	0.36	0.00	0.00	0.00	0.08	0.00
26	0.09	0.02	0.00	0.00	0.00	0.08	0.00	0.00	0.00	0.00	0.00	---
27	0.09	0.01	0.00	0.00	0.00	0.00	0.00	0.00	0.00	0.43	0.00	---
28	0.17	0.00	0.00	0.00	0.00	0.06	0.00	2.15	0.00	0.01	0.00	0.06
29	0.00	0.00	0.00	---	---	---	0.00	0.13	0.04	1.05	0.00	1.91
30	0.00	0.17	0.08	---	---	0.00	0.00	0.00	0.02	0.00	0.00	1.73
31	0.06	---	0.41	---	---	---	---	0.00	---	0.03	0.00	---
Total	---	6.14	---	---	---	---	---	---	---	2.30	7.03	---

PRECIPITATION, TOTAL, INCHES
WATER YEAR OCTOBER 2010 TO SEPTEMBER 2011
DAILY SUM VALUES

[---, not available]

Day	Oct	Nov	Dec	Jan	Feb	Mar	Apr	May	Jun	Jul	Aug	Sep
1	0.01	0.00	0.09	0.24	---	---	---	---	---	---	---	---
2	0.00	0.00	0.00	0.20	---	---	---	---	---	---	---	---
3	0.00	0.00	0.00	0.00	---	---	---	---	---	---	---	---
4	0.00	---	0.00	0.00	---	---	---	---	---	---	---	---
5	0.00	---	0.18	0.00	---	---	---	---	---	---	---	---
6	0.00	0.04	0.00	---	---	---	---	---	---	---	---	---
7	0.00	0.00	0.00	---	---	---	---	---	---	---	---	---
8	0.00	0.00	0.00	---	---	---	---	---	---	---	---	---
9	0.00	0.00	0.00	---	---	---	---	---	---	---	---	---
10	0.00	0.00	0.00	---	---	---	---	---	---	---	---	---
11	0.00	0.00	0.13	---	---	---	---	---	---	---	---	---
12	0.00	0.00	0.34	---	---	---	---	---	---	---	---	---
13	0.00	0.00	0.00	---	---	---	---	---	---	---	---	---
14	0.51	0.00	0.00	---	---	---	---	---	---	---	---	---
15	0.00	0.00	0.00	---	---	---	---	---	---	---	---	---
16	0.00	0.09	0.64	---	---	---	---	---	---	---	---	---
17	0.00	0.15	0.10	---	---	---	---	---	---	---	---	---
18	0.00	0.00	0.01	---	---	---	---	---	---	---	---	---
19	0.00	0.00	0.00	---	---	---	---	---	---	---	---	---
20	0.05	0.00	0.00	---	---	---	---	---	---	---	---	---
21	0.00	0.00	0.00	---	---	---	---	---	---	---	---	---
22	0.00	0.00	0.00	---	---	---	---	---	---	---	---	---
23	0.00	0.01	0.00	---	---	---	---	---	---	---	---	---
24	0.00	0.00	0.00	---	---	---	---	---	---	---	---	---
25	0.06	0.02	0.02	---	---	---	---	---	---	---	---	---
26	0.21	0.03	0.00	---	---	---	---	---	---	---	---	---
27	0.00	0.00	0.00	---	---	---	---	---	---	---	---	---
28	0.06	0.00	0.00	---	---	---	---	---	---	---	---	---
29	0.00	0.00	0.00	---	---	---	---	---	---	---	---	---
30	0.00	0.01	0.00	---	---	---	---	---	---	---	---	---
31	0.00	---	0.00	---	---	---	---	---	---	---	---	---
Total	0.90	---	1.51	---	---	---	---	---	---	---	---	---

Appendix 2. Daily mean discharge at sites BR1, SR1, SR2, ST1A, and ST1D at the Lake Wheeler Road Field Laboratory study area in North Carolina during October 2009 to January 2011

**354355078401401 BACKGROUND RUNOFF SITE 1 AT NORTH CAROLINA STATE
UNIVERSITY RESEARCH UNIT AT RALEIGH, NC**

Neuse Basin
Upper Neuse Subbasin

LOCAL NAME.--BR1

LOCATION.--Lat 35°43'54.72", long 78°40'14.10" referenced to North American Datum of 1983, Wake County, NC, Hydrologic Unit 03020201, 1.25 mi northeast of Yates Mill Pond, 0.93 mi southeast of intersection of Tryon Road and Lake Wheeler Road, 0.57 mi northeast of intersection of Inwood Road and Dairy Lane, and 0.27 miles east of Chi Road at NCSU Lake Wheeler Road Farm.

DRAINAGE AREA.-- 0.021 mi².

SURFACE-WATER RECORDS

PERIOD OF RECORD.--January 15, 2010 to January 5, 2011.

GAGE.--Water-stage recorder and 2.0 foot H-flume.

REMARKS.-- Records poor. Maximum discharge for period of record undetermined. Minimum discharge, no flow, occurred all or part of most days throughout the period of record.

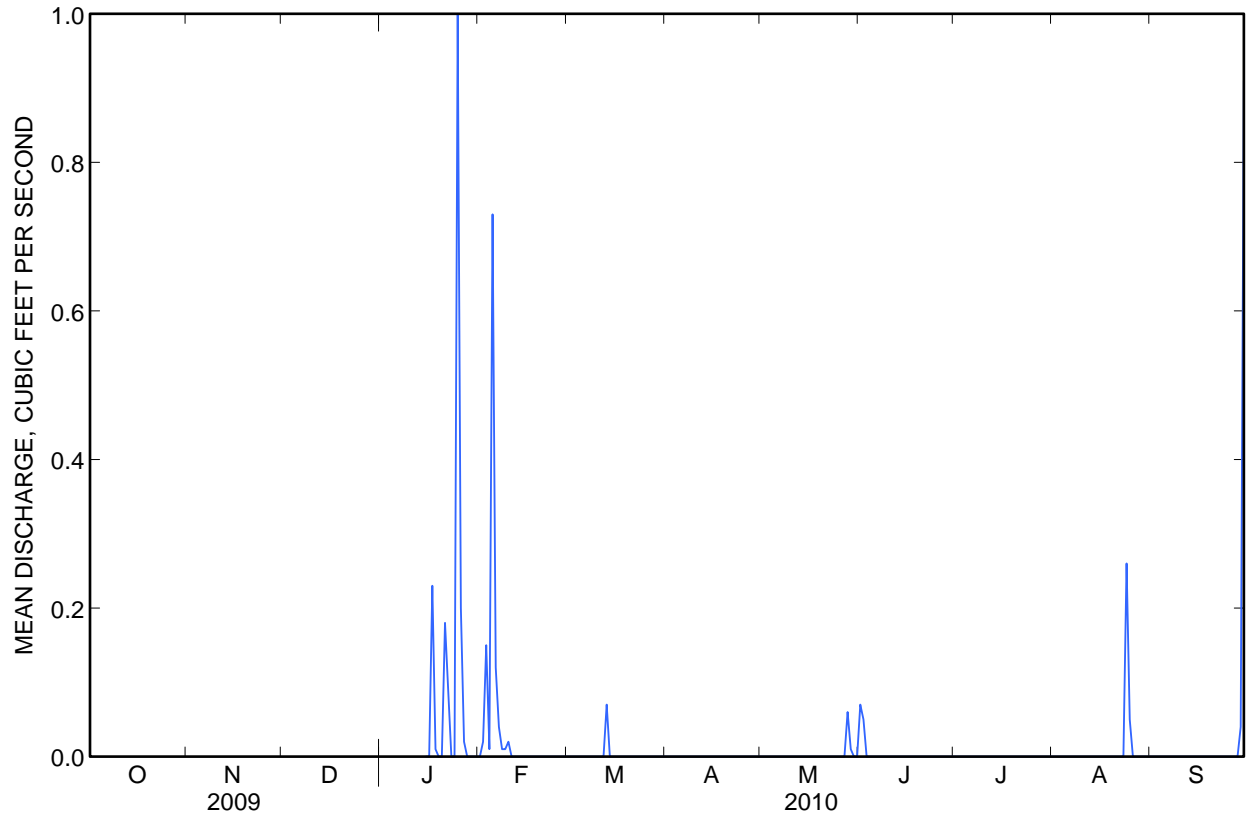
354355078401401 BACKGROUND RUNOFF SITE 1 AT NORTH CAROLINA STATE UNIVERSITY RESEARCH UNIT AT RALEIGH, NC—Continued

DISCHARGE, CUBIC FEET PER SECOND
 WATER YEAR OCTOBER 2009 TO SEPTEMBER 2010
 DAILY MEAN VALUES

[---, not available; e, estimated]

Day	Oct	Nov	Dec	Jan	Feb	Mar	Apr	May	Jun	Jul	Aug	Sep
1	---	---	---	---	e0.00	0.00	0.00	0.00	0.07	0.00	0.00	0.00
2	---	---	---	---	e0.02	0.00	0.00	0.00	0.05	0.00	0.00	0.00
3	---	---	---	---	0.15	0.00	0.00	0.00	0.00	0.00	0.00	0.00
4	---	---	---	---	0.01	0.00	0.00	0.00	0.00	0.00	0.00	0.00
5	---	---	---	---	0.73	0.00	0.00	0.00	0.00	0.00	0.00	0.00
6	---	---	---	---	0.12	0.00	0.00	0.00	0.00	0.00	0.00	0.00
7	---	---	---	---	0.04	0.00	0.00	0.00	0.00	0.00	0.00	0.00
8	---	---	---	---	0.01	0.00	0.00	0.00	0.00	0.00	0.00	0.00
9	---	---	---	---	0.01	0.00	0.00	0.00	0.00	0.00	0.00	0.00
10	---	---	---	---	0.02	0.00	0.00	0.00	0.00	0.00	0.00	0.00
11	---	---	---	---	0.00	0.00	0.00	0.00	0.00	0.00	0.00	0.00
12	---	---	---	---	0.00	0.00	0.00	0.00	0.00	0.00	0.00	0.00
13	---	---	---	---	0.00	0.07	0.00	0.00	0.00	0.00	0.00	0.00
14	---	---	---	---	e0.00	0.00	0.00	0.00	0.00	0.00	0.00	0.00
15	---	---	---	e0.00	e0.00	0.00	0.00	0.00	0.00	0.00	0.00	0.00
16	---	---	---	e0.00	0.00	0.00	0.00	0.00	0.00	e0.00	0.00	0.00
17	---	---	---	0.23	0.00	e0.00	0.00	e0.00	0.00	e0.00	0.00	0.00
18	---	---	---	0.01	0.00	0.00	0.00	e0.00	0.00	0.00	0.00	0.00
19	---	---	---	0.00	0.00	0.00	0.00	e0.00	0.00	0.00	0.00	0.00
20	---	---	---	0.00	0.00	0.00	0.00	0.00	0.00	0.00	0.00	0.00
21	---	---	---	0.18	0.00	0.00	0.00	0.00	0.00	0.00	0.00	0.00
22	---	---	---	0.09	0.00	0.00	0.00	0.00	0.00	0.00	0.00	0.00
23	---	---	---	0.00	0.00	0.00	0.00	0.00	0.00	0.00	0.00	0.00
24	---	---	---	0.00	0.00	0.00	0.00	0.00	0.00	0.00	0.26	0.00
25	---	---	---	e1.00	e0.00	0.00	e0.00	0.00	0.00	0.00	0.05	0.00
26	---	---	---	e0.20	e0.00	0.00	e0.00	0.00	0.00	0.00	0.00	0.00
27	---	---	---	e0.02	0.00	0.00	0.00	0.00	0.00	e0.00	0.00	0.00
28	---	---	---	e0.00	0.00	0.00	0.00	0.06	0.00	e0.00	0.00	0.00
29	---	---	---	0.00	---	0.00	0.00	0.01	0.00	e0.00	0.00	0.04
30	---	---	---	0.00	---	0.00	0.00	0.00	0.00	0.00	0.00	0.91
31	---	---	---	0.00	---	0.00	---	0.00	---	0.00	0.00	---
Total	---	---	---	---	1.11	0.07	0.00	0.07	0.12	0.00	0.31	0.95
Mean	---	---	---	---	0.04	0.00	0.00	0.00	0.00	0.00	0.01	0.03
Max	---	---	---	---	0.73	0.07	0.00	0.06	0.07	0.00	0.26	0.91
Min	---	---	---	---	0.00	0.00	0.00	0.00	0.00	0.00	0.00	0.00

354355078401401 BACKGROUND RUNOFF SITE 1 AT NORTH CAROLINA STATE UNIVERSITY RESEARCH UNIT AT RALEIGH, NC—Continued



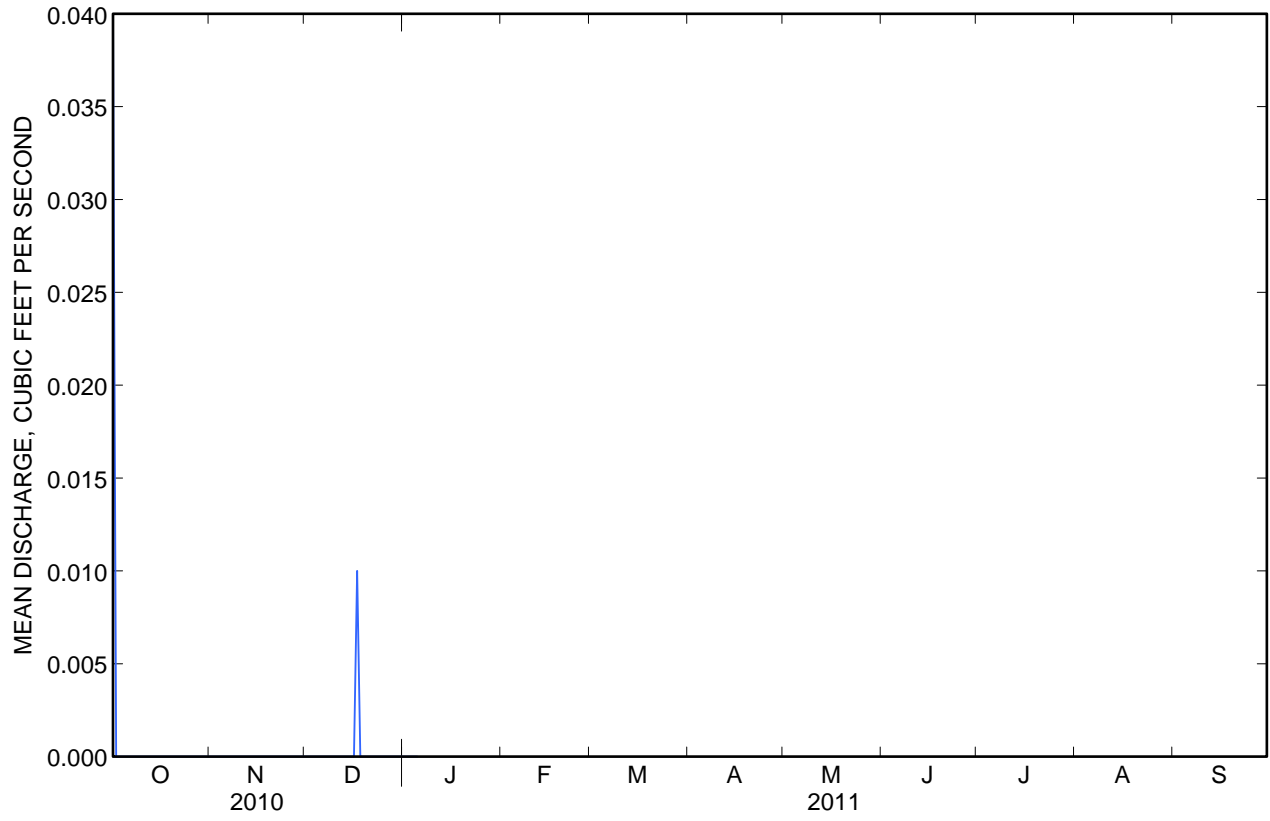
354355078401401 BACKGROUND RUNOFF SITE 1 AT NORTH CAROLINA STATE UNIVERSITY RESEARCH UNIT AT RALEIGH, NC—Continued

DISCHARGE, CUBIC FEET PER SECOND
 WATER YEAR OCTOBER 2010 TO SEPTEMBER 2011
 DAILY MEAN VALUES

[---, not available; e, estimated]

Day	Oct	Nov	Dec	Jan	Feb	Mar	Apr	May	Jun	Jul	Aug	Sep
1	0.04	0.00	0.00	0.00	---	---	---	---	---	---	---	---
2	0.00	0.00	0.00	0.00	---	---	---	---	---	---	---	---
3	0.00	0.00	0.00	e0.00	---	---	---	---	---	---	---	---
4	0.00	0.00	0.00	e0.00	---	---	---	---	---	---	---	---
5	0.00	0.00	0.00	0.00	---	---	---	---	---	---	---	---
6	0.00	0.00	e0.00	---	---	---	---	---	---	---	---	---
7	0.00	0.00	e0.00	---	---	---	---	---	---	---	---	---
8	0.00	0.00	0.00	---	---	---	---	---	---	---	---	---
9	0.00	0.00	0.00	---	---	---	---	---	---	---	---	---
10	0.00	0.00	0.00	---	---	---	---	---	---	---	---	---
11	0.00	0.00	0.00	---	---	---	---	---	---	---	---	---
12	0.00	0.00	0.00	---	---	---	---	---	---	---	---	---
13	0.00	0.00	e0.00	---	---	---	---	---	---	---	---	---
14	0.00	0.00	0.00	---	---	---	---	---	---	---	---	---
15	0.00	0.00	0.00	---	---	---	---	---	---	---	---	---
16	0.00	0.00	0.00	---	---	---	---	---	---	---	---	---
17	0.00	0.00	e0.01	---	---	---	---	---	---	---	---	---
18	0.00	0.00	e0.00	---	---	---	---	---	---	---	---	---
19	0.00	0.00	e0.00	---	---	---	---	---	---	---	---	---
20	0.00	0.00	e0.00	---	---	---	---	---	---	---	---	---
21	0.00	0.00	e0.00	---	---	---	---	---	---	---	---	---
22	0.00	0.00	0.00	---	---	---	---	---	---	---	---	---
23	0.00	0.00	0.00	---	---	---	---	---	---	---	---	---
24	0.00	0.00	0.00	---	---	---	---	---	---	---	---	---
25	0.00	0.00	0.00	---	---	---	---	---	---	---	---	---
26	0.00	0.00	0.00	---	---	---	---	---	---	---	---	---
27	0.00	0.00	0.00	---	---	---	---	---	---	---	---	---
28	0.00	e0.00	e0.00	---	---	---	---	---	---	---	---	---
29	0.00	0.00	e0.00	---	---	---	---	---	---	---	---	---
30	0.00	0.00	e0.00	---	---	---	---	---	---	---	---	---
31	0.00	---	e0.00	---	---	---	---	---	---	---	---	---
Total	0.04	0.00	0.01	---	---	---	---	---	---	---	---	---
Mean	0.00	0.00	0.00	---	---	---	---	---	---	---	---	---
Max	0.04	0.00	0.01	---	---	---	---	---	---	---	---	---
Min	0.00	0.00	0.00	---	---	---	---	---	---	---	---	---

354355078401401 BACKGROUND RUNOFF SITE 1 AT NORTH CAROLINA STATE UNIVERSITY RESEARCH UNIT AT RALEIGH, NC—Continued



**354349078402801 SWINE RUNOFF SITE 1 AT NORTH CAROLINA STATE UNIVERSITY
RESEARCH UNIT AT RALEIGH, NC**

Neuse Basin
Upper Neuse Subbasin

LOCAL NAME.--SR1

LOCATION.--Lat 35°43'48.72", long 78°40'27.84" referenced to North American Datum of 1983, Wake County, NC, Hydrologic Unit 03020201, 1.0 mi northeast of Yates Mill Pond, 0.94 mi southeast of intersection of Tryon Road and Lake Wheeler Road, 0.38 miles northeast of the intersection of Inwood Road and Dairy Lane, and 50 feet southeast of secondary waste lagoon.

DRAINAGE AREA.-- 0.059 mi².

SURFACE-WATER RECORDS

PERIOD OF RECORD.--January 15, 2010 to January 5, 2011.

GAGE.--Water-stage recorder and 2.0 foot H-flume.

REMARKS.-- Records poor. Maximum discharge for period of record undetermined. Minimum discharge, no flow, occurred all or part of most days throughout the period of record.

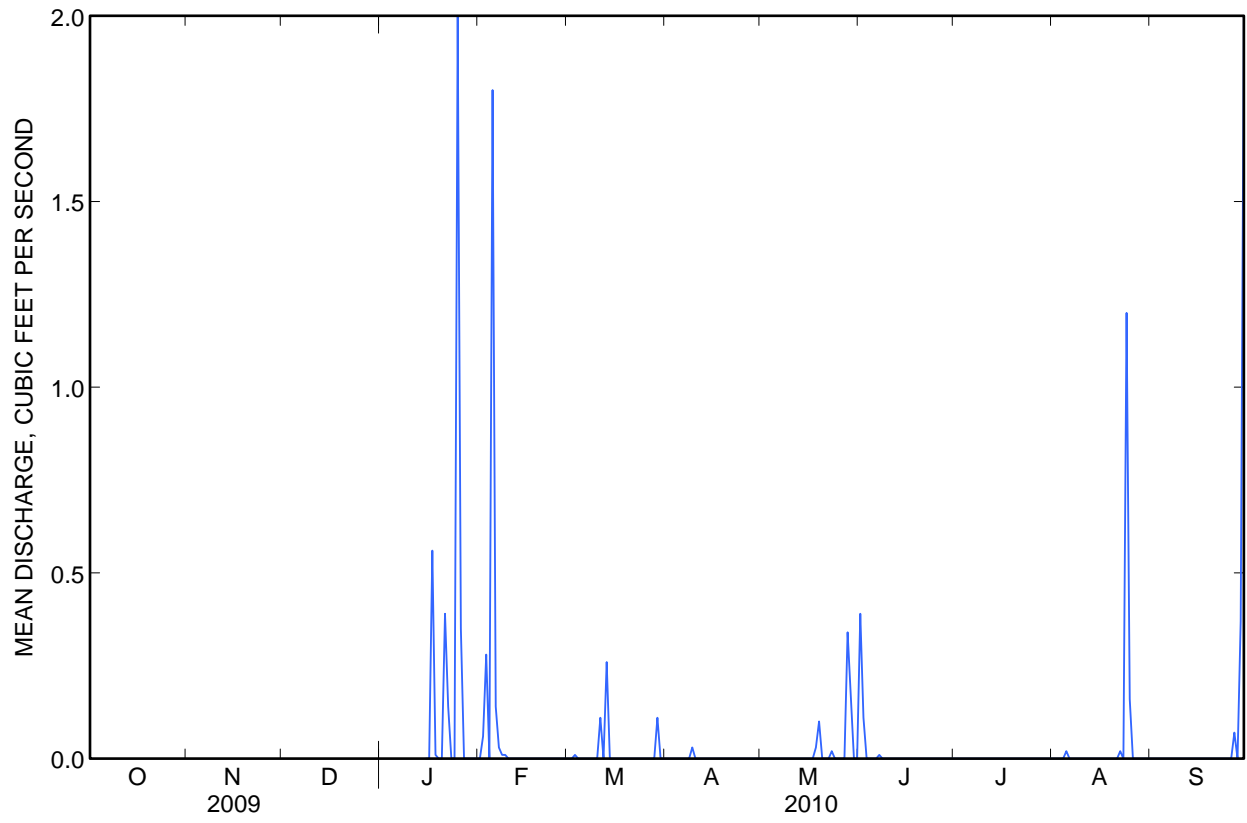
354349078402801 SWINE RUNOFF SITE 1 AT NORTH CAROLINA STATE UNIVERSITY RESEARCH UNIT AT RALEIGH,
NC—Continued

DISCHARGE, CUBIC FEET PER SECOND
WATER YEAR OCTOBER 2009 TO SEPTEMBER 2010
DAILY MEAN VALUES

[---, not available; e, estimated]

Day	Oct	Nov	Dec	Jan	Feb	Mar	Apr	May	Jun	Jul	Aug	Sep
1	---	---	---	---	0.00	0.00	0.00	0.00	0.39	0.00	0.00	0.00
2	---	---	---	---	0.06	0.00	0.00	0.00	0.11	0.00	0.00	0.00
3	---	---	---	---	0.28	0.01	0.00	0.00	0.00	0.00	0.00	0.00
4	---	---	---	---	0.00	0.00	0.00	0.00	0.00	0.00	0.00	0.00
5	---	---	---	---	1.8	0.00	0.00	0.00	0.00	0.00	0.02	0.00
6	---	---	---	---	0.14	0.00	0.00	0.00	0.00	0.00	0.00	0.00
7	---	---	---	---	e0.03	0.00	0.00	0.00	0.01	0.00	0.00	0.00
8	---	---	---	---	e0.01	0.00	0.00	0.00	0.00	0.00	0.00	0.00
9	---	---	---	---	e0.01	0.00	0.03	0.00	0.00	0.00	0.00	0.00
10	---	---	---	---	e0.00	0.00	0.00	0.00	0.00	0.00	0.00	0.00
11	---	---	---	---	e0.00	0.11	0.00	0.00	0.00	0.00	0.00	0.00
12	---	---	---	---	0.00	0.00	0.00	0.00	0.00	0.00	0.00	0.00
13	---	---	---	---	e0.00	0.26	0.00	0.00	0.00	0.00	0.00	0.00
14	---	---	---	---	e0.00	0.00	0.00	0.00	0.00	0.00	0.00	0.00
15	---	---	---	e0.00	e0.00	0.00	0.00	0.00	0.00	0.00	0.00	0.00
16	---	---	---	e0.00	e0.00	0.00	0.00	0.00	0.00	0.00	0.00	0.00
17	---	---	---	0.56	0.00	0.00	0.00	0.00	0.00	0.00	0.00	0.00
18	---	---	---	0.01	0.00	0.00	0.00	0.03	0.00	0.00	0.00	0.00
19	---	---	---	0.00	0.00	0.00	0.00	0.10	0.00	0.00	0.00	0.00
20	---	---	---	0.00	0.00	0.00	0.00	0.00	0.00	0.00	0.00	0.00
21	---	---	---	0.39	0.00	0.00	0.00	0.00	0.00	0.00	0.00	0.00
22	---	---	---	0.14	0.00	0.00	0.00	0.00	0.00	0.00	0.02	0.00
23	---	---	---	0.00	0.00	0.00	0.00	0.02	0.00	0.00	0.00	0.00
24	---	---	---	0.00	0.00	0.00	0.00	0.00	0.00	0.00	e1.2	0.00
25	---	---	---	e2.00	0.00	0.00	0.00	0.00	0.00	0.00	0.16	0.00
26	---	---	---	e0.35	0.00	0.00	0.00	0.00	0.00	0.00	0.00	0.00
27	---	---	---	0.00	0.00	e0.00	0.00	0.00	0.00	0.00	0.00	0.07
28	---	---	---	0.00	0.00	0.00	0.00	e0.34	0.00	0.00	0.00	0.00
29	---	---	---	0.00	---	0.11	0.00	0.17	0.00	0.00	0.00	0.37
30	---	---	---	0.00	---	0.00	0.00	0.00	0.00	0.00	0.00	e2.0
31	---	---	---	0.00	---	0.00	---	0.00	---	0.00	0.00	---
Total	---	---	---	---	2.33	0.49	0.03	0.66	0.51	0.00	1.40	2.44
Mean	---	---	---	---	0.08	0.02	0.00	0.02	0.02	0.00	0.05	0.08
Max	---	---	---	---	1.8	0.26	0.03	0.34	0.39	0.00	1.2	2.0
Min	---	---	---	---	0.00	0.00	0.00	0.00	0.00	0.00	0.00	0.00

354349078402801 SWINE RUNOFF SITE 1 AT NORTH CAROLINA STATE UNIVERSITY RESEARCH UNIT AT RALEIGH,
NC—Continued



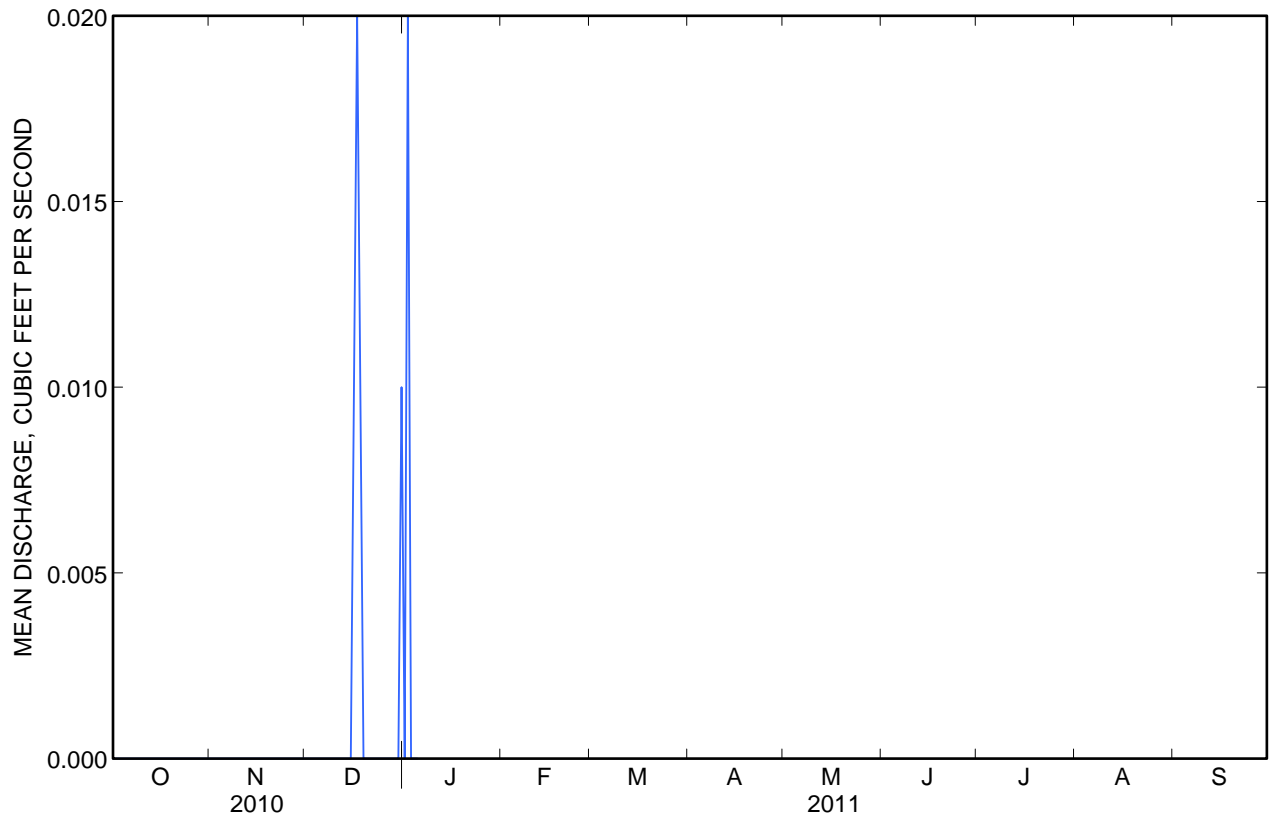
354349078402801 SWINE RUNOFF SITE 1 AT NORTH CAROLINA STATE UNIVERSITY RESEARCH UNIT AT RALEIGH,
NC—Continued

DISCHARGE, CUBIC FEET PER SECOND
WATER YEAR OCTOBER 2010 TO SEPTEMBER 2011
DAILY MEAN VALUES

[---, not available; e, estimated]

Day	Oct	Nov	Dec	Jan	Feb	Mar	Apr	May	Jun	Jul	Aug	Sep
1	0.00	0.00	0.00	0.00	---	---	---	---	---	---	---	---
2	0.00	0.00	0.00	0.02	---	---	---	---	---	---	---	---
3	0.00	0.00	0.00	e0.00	---	---	---	---	---	---	---	---
4	0.00	0.00	0.00	e0.00	---	---	---	---	---	---	---	---
5	0.00	0.00	0.00	0.00	---	---	---	---	---	---	---	---
6	0.00	0.00	e0.00	---	---	---	---	---	---	---	---	---
7	0.00	0.00	e0.00	---	---	---	---	---	---	---	---	---
8	0.00	e0.00	0.00	---	---	---	---	---	---	---	---	---
9	0.00	0.00	0.00	---	---	---	---	---	---	---	---	---
10	0.00	0.00	0.00	---	---	---	---	---	---	---	---	---
11	0.00	0.00	0.00	---	---	---	---	---	---	---	---	---
12	0.00	e0.00	0.00	---	---	---	---	---	---	---	---	---
13	0.00	e0.00	0.00	---	---	---	---	---	---	---	---	---
14	0.00	0.00	0.00	---	---	---	---	---	---	---	---	---
15	0.00	0.00	0.00	---	---	---	---	---	---	---	---	---
16	0.00	0.00	0.01	---	---	---	---	---	---	---	---	---
17	0.00	0.00	0.02	---	---	---	---	---	---	---	---	---
18	0.00	0.00	0.01	---	---	---	---	---	---	---	---	---
19	0.00	0.00	e0.00	---	---	---	---	---	---	---	---	---
20	0.00	e0.00	e0.00	---	---	---	---	---	---	---	---	---
21	0.00	0.00	e0.00	---	---	---	---	---	---	---	---	---
22	0.00	0.00	0.00	---	---	---	---	---	---	---	---	---
23	0.00	e0.00	0.00	---	---	---	---	---	---	---	---	---
24	0.00	0.00	0.00	---	---	---	---	---	---	---	---	---
25	0.00	0.00	0.00	---	---	---	---	---	---	---	---	---
26	0.00	0.00	0.00	---	---	---	---	---	---	---	---	---
27	0.00	0.00	0.00	---	---	---	---	---	---	---	---	---
28	0.00	0.00	0.00	---	---	---	---	---	---	---	---	---
29	0.00	0.00	0.00	---	---	---	---	---	---	---	---	---
30	0.00	0.00	e0.00	---	---	---	---	---	---	---	---	---
31	0.00	---	0.01	---	---	---	---	---	---	---	---	---
Total	0.00	0.00	0.05	---	---	---	---	---	---	---	---	---
Mean	0.00	0.00	0.00	---	---	---	---	---	---	---	---	---
Max	0.00	0.00	0.02	---	---	---	---	---	---	---	---	---
Min	0.00	0.00	0.00	---	---	---	---	---	---	---	---	---

354349078402801 SWINE RUNOFF SITE 1 AT NORTH CAROLINA STATE UNIVERSITY RESEARCH UNIT AT RALEIGH,
NC—Continued



**354347078401501 SWINE RUNOFF SITE 2 AT NORTH CAROLINA STATE UNIVERSITY
RESEARCH UNIT AT RALEIGH, NC**

Neuse Basin
Upper Neuse Subbasin

LOCAL NAME.--SR2

LOCATION.--Lat 35°43'47.04", long 78°40'14.94" referenced to North American Datum of 1983, Wake County, NC, Hydrologic Unit 03020201, 1.1 mi northeast of Yates Mill Pond, 1.06 mi southeast of intersection of Tryon Road and Lake Wheeler Road, 0.43 miles northeast of the intersection of Inwood Road and Dairy Lane, and 0.2 mi east of secondary waste lagoon.

DRAINAGE AREA.-- 0.0078 mi².

SURFACE-WATER RECORDS

PERIOD OF RECORD.--January 15, 2010 to January 5, 2011.

GAGE.--Water-stage recorder and 1.5 foot H-flume.

REMARKS.-- Records poor. Maximum discharge for period of record undetermined. Minimum discharge, no flow, occurred all or part of most days throughout the period of record.

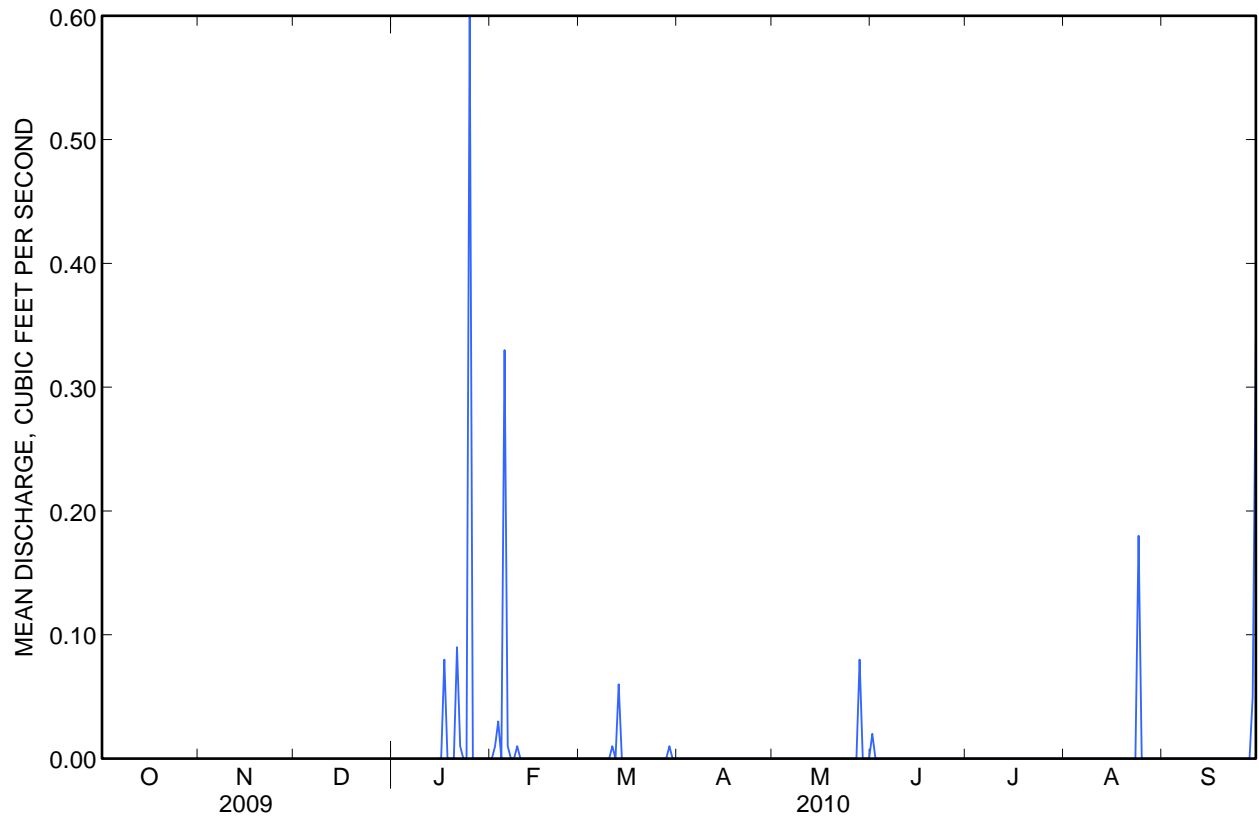
354347078401501 SWINE RUNOFF SITE 2 AT NORTH CAROLINA STATE UNIVERSITY RESEARCH UNIT AT RALEIGH,
NC—Continued

DISCHARGE, CUBIC FEET PER SECOND
WATER YEAR OCTOBER 2009 TO SEPTEMBER 2010
DAILY MEAN VALUES

[---, not available; e, estimated]

Day	Oct	Nov	Dec	Jan	Feb	Mar	Apr	May	Jun	Jul	Aug	Sep
1	---	---	---	---	e0.00	0.00	0.00	0.00	0.02	0.00	0.00	0.00
2	---	---	---	---	e0.01	0.00	0.00	0.00	0.00	0.00	0.00	0.00
3	---	---	---	---	0.03	0.00	0.00	0.00	0.00	0.00	0.00	0.00
4	---	---	---	---	e0.00	0.00	0.00	0.00	0.00	0.00	0.00	0.00
5	---	---	---	---	0.33	e0.00	0.00	0.00	0.00	0.00	0.00	0.00
6	---	---	---	---	0.01	0.00	0.00	0.00	0.00	0.00	0.00	0.00
7	---	---	---	---	e0.00	0.00	0.00	0.00	0.00	0.00	0.00	0.00
8	---	---	---	---	e0.00	0.00	0.00	0.00	0.00	0.00	0.00	0.00
9	---	---	---	---	e0.01	0.00	0.00	0.00	0.00	0.00	0.00	0.00
10	---	---	---	---	0.00	0.00	0.00	0.00	0.00	0.00	0.00	0.00
11	---	---	---	---	0.00	0.01	0.00	0.00	0.00	0.00	0.00	0.00
12	---	---	---	---	0.00	0.00	0.00	0.00	0.00	0.00	0.00	0.00
13	---	---	---	---	0.00	0.06	0.00	0.00	0.00	0.00	0.00	0.00
14	---	---	---	---	e0.00	0.00	0.00	0.00	0.00	0.00	0.00	0.00
15	---	---	---	e0.00	e0.00	0.00	0.00	0.00	0.00	0.00	0.00	0.00
16	---	---	---	0.00	e0.00	0.00	0.00	0.00	0.00	0.00	0.00	0.00
17	---	---	---	0.08	0.00	0.00	0.00	0.00	0.00	0.00	0.00	0.00
18	---	---	---	0.00	0.00	0.00	0.00	0.00	0.00	0.00	0.00	0.00
19	---	---	---	e0.00	0.00	0.00	0.00	0.00	0.00	0.00	0.00	0.00
20	---	---	---	0.00	0.00	0.00	0.00	0.00	0.00	0.00	0.00	0.00
21	---	---	---	0.09	0.00	0.00	0.00	0.00	0.00	0.00	0.00	0.00
22	---	---	---	0.01	0.00	0.00	0.00	0.00	0.00	0.00	0.00	0.00
23	---	---	---	0.00	0.00	0.00	0.00	0.00	0.00	0.00	0.00	0.00
24	---	---	---	0.00	0.00	0.00	0.00	0.00	0.00	0.00	e0.18	0.00
25	---	---	---	e0.60	0.00	0.00	0.00	0.00	0.00	0.00	0.00	0.00
26	---	---	---	0.00	0.00	0.00	0.00	0.00	0.00	0.00	0.00	0.00
27	---	---	---	0.00	0.00	0.00	0.00	0.00	0.00	0.00	0.00	0.00
28	---	---	---	0.00	0.00	0.00	0.00	0.08	0.00	0.00	0.00	0.00
29	---	---	---	0.00	---	0.01	0.00	0.00	0.00	0.00	0.00	0.05
30	---	---	---	0.00	---	0.00	0.00	0.00	0.00	0.00	0.00	0.34
31	---	---	---	0.00	---	0.00	---	0.00	---	0.00	0.00	---
Total	---	---	---	---	0.39	0.08	0.00	0.08	0.02	0.00	0.18	0.39
Mean	---	---	---	---	0.01	0.00	0.00	0.00	0.00	0.00	0.01	0.01
Max	---	---	---	---	0.33	0.06	0.00	0.08	0.02	0.00	0.18	0.34
Min	---	---	---	---	0.00	0.00	0.00	0.00	0.00	0.00	0.00	0.00

354347078401501 SWINE RUNOFF SITE 2 AT NORTH CAROLINA STATE UNIVERSITY RESEARCH UNIT AT RALEIGH,
NC—Continued



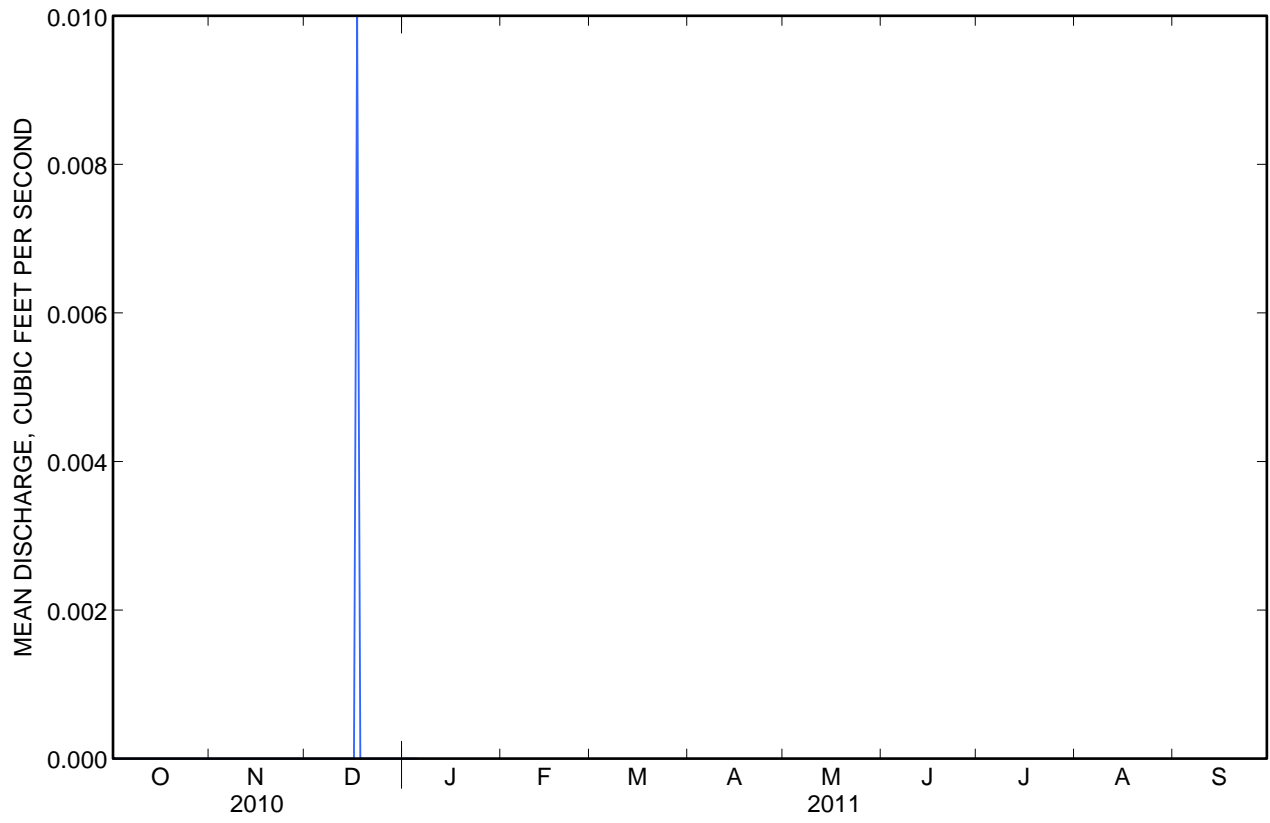
354347078401501 SWINE RUNOFF SITE 2 AT NORTH CAROLINA STATE UNIVERSITY RESEARCH UNIT AT RALEIGH,
NC—Continued

DISCHARGE, CUBIC FEET PER SECOND
WATER YEAR OCTOBER 2010 TO SEPTEMBER 2011
DAILY MEAN VALUES

[---, not available; e, estimated]

Day	Oct	Nov	Dec	Jan	Feb	Mar	Apr	May	Jun	Jul	Aug	Sep
1	0.00	0.00	0.00	0.00	---	---	---	---	---	---	---	---
2	0.00	0.00	0.00	0.00	---	---	---	---	---	---	---	---
3	0.00	0.00	0.00	e0.00	---	---	---	---	---	---	---	---
4	0.00	0.00	0.00	e0.00	---	---	---	---	---	---	---	---
5	0.00	0.00	0.00	0.00	---	---	---	---	---	---	---	---
6	0.00	0.00	0.00	---	---	---	---	---	---	---	---	---
7	0.00	0.00	0.00	---	---	---	---	---	---	---	---	---
8	0.00	0.00	0.00	---	---	---	---	---	---	---	---	---
9	0.00	0.00	0.00	---	---	---	---	---	---	---	---	---
10	0.00	0.00	0.00	---	---	---	---	---	---	---	---	---
11	0.00	0.00	0.00	---	---	---	---	---	---	---	---	---
12	0.00	0.00	0.00	---	---	---	---	---	---	---	---	---
13	0.00	0.00	e0.00	---	---	---	---	---	---	---	---	---
14	0.00	0.00	0.00	---	---	---	---	---	---	---	---	---
15	0.00	0.00	0.00	---	---	---	---	---	---	---	---	---
16	0.00	0.00	0.00	---	---	---	---	---	---	---	---	---
17	0.00	0.00	e0.01	---	---	---	---	---	---	---	---	---
18	0.00	0.00	e0.00	---	---	---	---	---	---	---	---	---
19	0.00	0.00	e0.00	---	---	---	---	---	---	---	---	---
20	0.00	0.00	e0.00	---	---	---	---	---	---	---	---	---
21	0.00	0.00	e0.00	---	---	---	---	---	---	---	---	---
22	0.00	0.00	0.00	---	---	---	---	---	---	---	---	---
23	0.00	0.00	0.00	---	---	---	---	---	---	---	---	---
24	0.00	0.00	0.00	---	---	---	---	---	---	---	---	---
25	0.00	0.00	0.00	---	---	---	---	---	---	---	---	---
26	0.00	0.00	e0.00	---	---	---	---	---	---	---	---	---
27	0.00	0.00	e0.00	---	---	---	---	---	---	---	---	---
28	0.00	0.00	e0.00	---	---	---	---	---	---	---	---	---
29	0.00	0.00	e0.00	---	---	---	---	---	---	---	---	---
30	0.00	0.00	e0.00	---	---	---	---	---	---	---	---	---
31	0.00	---	e0.00	---	---	---	---	---	---	---	---	---
Total	0.00	0.00	0.01	---	---	---	---	---	---	---	---	---
Mean	0.00	0.00	0.00	---	---	---	---	---	---	---	---	---
Max	0.00	0.00	0.01	---	---	---	---	---	---	---	---	---
Min	0.00	0.00	0.00	---	---	---	---	---	---	---	---	---

354347078401501 SWINE RUNOFF SITE 2 AT NORTH CAROLINA STATE UNIVERSITY RESEARCH UNIT AT RALEIGH,
NC—Continued



0208762750 UNNAMED TRIB TO SWIFT CREEK NEAR YATES MILL POND, NC

Neuse Basin
Upper Neuse Subbasin

LOCAL NAME.--ST1A

LOCATION.--Lat 35°43'55", long 78°40'34" referenced to North American Datum of 1983, Wake County, NC, Hydrologic Unit 03020201, 0.4 mi east of Secondary Road 1371 and approximately 1.1 mi northeast of Yates Mill Pond.

DRAINAGE AREA.--0.21 mi².

SURFACE-WATER RECORDS

PERIOD OF RECORD.--May 2002 to September 2004, October 2009 to January 2011.

GAGE.--Water-stage recorder. Elevation of gage is 326.08 ft above National Geodetic Vertical Datum of 1929 based on levels. Satellite telemetry at station.

REMARKS.-- Records poor. Minimum discharge during the period May 2002 to September 2003 occurred many days. Minimum discharge during the period October 2009 to January 2011 occurred several days during the months of July, August, and September 2010.

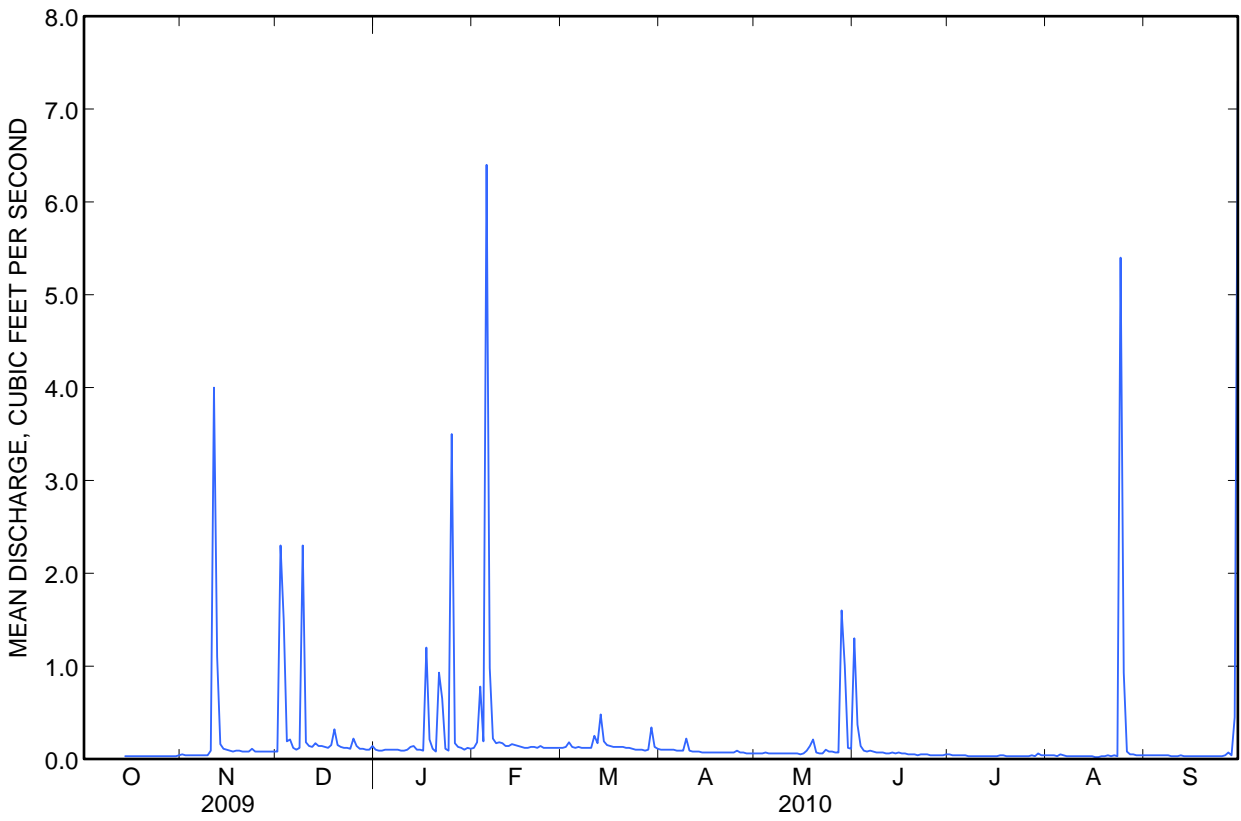
0208762750 UNNAMED TRIB TO SWIFT CREEK NEAR YATES MILL POND, NC—Continued

DISCHARGE, CUBIC FEET PER SECOND
WATER YEAR OCTOBER 2009 TO SEPTEMBER 2010
DAILY MEAN VALUES

[---, not available; e, estimated]

Day	Oct	Nov	Dec	Jan	Feb	Mar	Apr	May	Jun	Jul	Aug	Sep
1	---	0.05	0.08	0.10	0.12	0.12	0.10	0.06	1.3	e0.05	0.04	e0.04
2	---	0.04	2.3	0.09	0.18	0.13	0.10	0.06	0.37	e0.04	0.04	e0.04
3	---	0.04	1.5	0.09	0.78	0.18	0.10	0.06	0.14	e0.04	0.04	e0.04
4	---	0.04	0.19	0.10	0.19	0.13	0.10	0.07	0.09	e0.04	0.03	e0.04
5	---	0.04	0.21	0.10	6.4	0.12	0.10	0.06	0.08	e0.04	0.05	e0.04
6	---	0.04	0.12	0.10	0.98	0.13	0.09	0.06	0.09	e0.04	0.04	e0.04
7	---	0.04	0.10	0.10	0.22	0.12	0.09	0.06	0.08	e0.03	0.03	e0.04
8	---	0.04	0.12	0.10	0.17	0.12	0.09	0.06	0.07	0.03	0.03	e0.04
9	---	0.04	2.3	0.09	0.18	0.12	0.22	0.06	0.07	0.03	0.03	e0.03
10	---	0.09	0.18	0.09	0.17	0.12	0.09	0.06	0.07	0.03	0.03	e0.03
11	---	4.0	0.14	0.10	0.14	0.25	0.08	0.06	0.06	0.03	0.03	e0.03
12	---	1.1	0.13	0.13	0.14	0.17	0.08	0.06	0.06	0.03	0.03	e0.04
13	---	0.16	0.17	0.14	0.16	0.48	0.08	0.06	0.07	0.03	e0.03	e0.03
14	0.03	0.11	0.14	0.10	0.15	0.19	0.07	0.06	0.06	0.03	e0.03	e0.03
15	0.03	0.10	0.14	0.10	0.14	0.15	0.07	0.05	0.07	0.03	e0.03	e0.03
16	0.03	0.09	0.13	0.09	0.13	0.14	0.07	0.06	0.06	0.03	e0.02	0.03
17	0.03	0.08	0.12	1.2	0.12	0.13	0.07	0.09	0.06	0.04	e0.02	0.03
18	0.03	0.09	0.15	0.21	0.12	0.13	0.07	0.14	e0.05	0.04	0.03	0.03
19	0.03	0.09	0.32	0.11	0.13	0.13	0.07	0.21	e0.05	0.03	0.03	0.03
20	0.03	0.08	0.15	0.08	0.13	0.13	0.07	0.07	e0.05	0.03	0.04	0.03
21	0.03	0.08	0.13	0.93	0.12	0.12	0.07	0.06	e0.04	0.03	0.03	0.03
22	0.03	0.08	0.12	0.65	0.14	0.12	0.07	0.06	e0.05	0.03	0.04	0.03
23	0.03	0.11	0.12	0.11	0.12	0.11	0.07	0.10	e0.05	0.03	0.03	0.03
24	0.03	0.08	0.11	0.09	0.12	0.10	0.07	0.08	e0.05	0.03	5.4	0.03
25	0.03	0.08	0.22	3.5	0.12	0.10	0.09	0.08	e0.04	0.03	0.93	0.03
26	0.03	0.08	0.14	0.17	0.12	0.10	0.07	0.07	e0.04	0.03	0.08	0.04
27	0.03	0.08	0.11	0.13	0.12	0.09	0.07	0.07	e0.04	0.04	0.05	0.07
28	0.03	0.08	0.11	0.12	0.12	0.10	0.06	1.6	e0.04	0.03	0.05	0.04
29	0.03	0.08	0.10	0.10	---	0.34	0.06	1.0	e0.04	0.06	e0.04	0.45
30	0.03	0.08	0.10	0.12	---	0.13	0.06	0.12	e0.05	0.04	e0.04	7.3
31	0.04	---	0.14	0.11	---	0.11	---	0.11	---	0.04	e0.04	---
Total	---	7.19	10.09	9.25	11.73	4.61	2.50	4.82	3.39	1.08	7.38	8.74
Mean	---	0.24	0.33	0.30	0.42	0.15	0.08	0.16	0.11	0.03	0.24	0.29
Max	---	4.0	2.3	3.5	6.4	0.48	0.22	1.6	1.3	0.06	5.4	7.3
Min	---	0.04	0.08	0.08	0.12	0.09	0.06	0.05	0.04	0.03	0.02	0.03

0208762750 UNNAMED TRIB TO SWIFT CREEK NEAR YATES MILL POND, NC—Continued



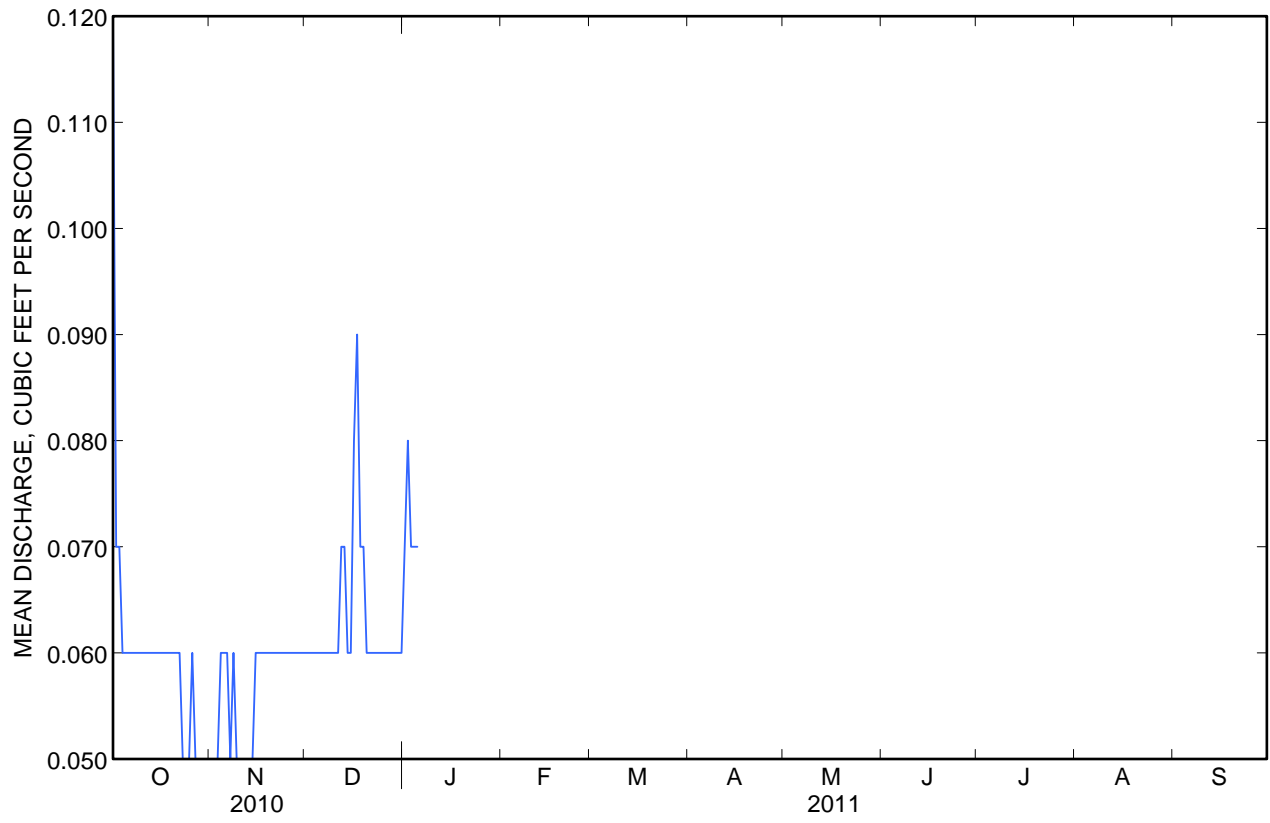
0208762750 UNNAMED TRIB TO SWIFT CREEK NEAR YATES MILL POND, NC—Continued

DISCHARGE, CUBIC FEET PER SECOND
 WATER YEAR OCTOBER 2010 TO SEPTEMBER 2011
 DAILY MEAN VALUES

[---, not available; e, estimated]

Day	Oct	Nov	Dec	Jan	Feb	Mar	Apr	May	Jun	Jul	Aug	Sep
1	0.12	0.05	0.06	0.07	---	---	---	---	---	---	---	---
2	0.07	0.05	0.06	0.08	---	---	---	---	---	---	---	---
3	0.07	0.05	0.06	0.07	---	---	---	---	---	---	---	---
4	0.06	0.06	0.06	0.07	---	---	---	---	---	---	---	---
5	0.06	0.06	0.06	0.07	---	---	---	---	---	---	---	---
6	0.06	0.06	0.06	---	---	---	---	---	---	---	---	---
7	0.06	0.05	0.06	---	---	---	---	---	---	---	---	---
8	0.06	0.06	0.06	---	---	---	---	---	---	---	---	---
9	0.06	0.05	0.06	---	---	---	---	---	---	---	---	---
10	0.06	0.05	0.06	---	---	---	---	---	---	---	---	---
11	0.06	0.05	0.06	---	---	---	---	---	---	---	---	---
12	0.06	0.05	0.07	---	---	---	---	---	---	---	---	---
13	0.06	0.05	0.07	---	---	---	---	---	---	---	---	---
14	0.06	0.05	0.06	---	---	---	---	---	---	---	---	---
15	0.06	0.06	0.06	---	---	---	---	---	---	---	---	---
16	0.06	0.06	0.08	---	---	---	---	---	---	---	---	---
17	0.06	0.06	0.09	---	---	---	---	---	---	---	---	---
18	0.06	0.06	0.07	---	---	---	---	---	---	---	---	---
19	0.06	0.06	0.07	---	---	---	---	---	---	---	---	---
20	0.06	0.06	0.06	---	---	---	---	---	---	---	---	---
21	0.06	0.06	0.06	---	---	---	---	---	---	---	---	---
22	0.06	0.06	0.06	---	---	---	---	---	---	---	---	---
23	0.05	0.06	0.06	---	---	---	---	---	---	---	---	---
24	0.05	0.06	0.06	---	---	---	---	---	---	---	---	---
25	0.05	0.06	0.06	---	---	---	---	---	---	---	---	---
26	0.06	0.06	0.06	---	---	---	---	---	---	---	---	---
27	0.05	0.06	0.06	---	---	---	---	---	---	---	---	---
28	0.05	0.06	0.06	---	---	---	---	---	---	---	---	---
29	0.05	0.06	0.06	---	---	---	---	---	---	---	---	---
30	0.05	0.06	0.06	---	---	---	---	---	---	---	---	---
31	0.05	---	0.06	---	---	---	---	---	---	---	---	---
Total	1.86	1.70	1.95	---	---	---	---	---	---	---	---	---
Mean	0.06	0.06	0.06	---	---	---	---	---	---	---	---	---
Max	0.12	0.06	0.09	---	---	---	---	---	---	---	---	---
Min	0.05	0.05	0.06	---	---	---	---	---	---	---	---	---

0208762750 UNNAMED TRIB TO SWIFT CREEK NEAR YATES MILL POND, NC—Continued



**0208762755 UNNAMED TRIBUTARY TO SWIFT CREEK AT NORTH CAROLINA STATE
UNIVERSITY RESEARCH UNIT, RALEIGH, NC**

Neuse Basin
Upper Neuse Subbasin

LOCAL NAME.--ST1D

LOCATION.--Lat 35°43'50.52", long 78°40'12.72" referenced to North American Datum of 1983, Wake County, NC, Hydrologic Unit 03020201, 1.2 mi northeast of Yates Mill Pond, 1.0 mi southeast of intersection of Tryon Road and Lake Wheeler Road, and 0.34 miles downstream of Chi Road.

DRAINAGE AREA.-- 0.33 mi².

SURFACE-WATER RECORDS

PERIOD OF RECORD.--October 2009 to January 2011.

GAGE.--Water-stage recorder. Datum of gage is 297.51 ft above National Geodetic Vertical Datum of 1929 based on levels. Satellite telemetry at station.

REMARKS.--Records poor. Minimum discharge for period of record occurred many days in the 2010 water year.

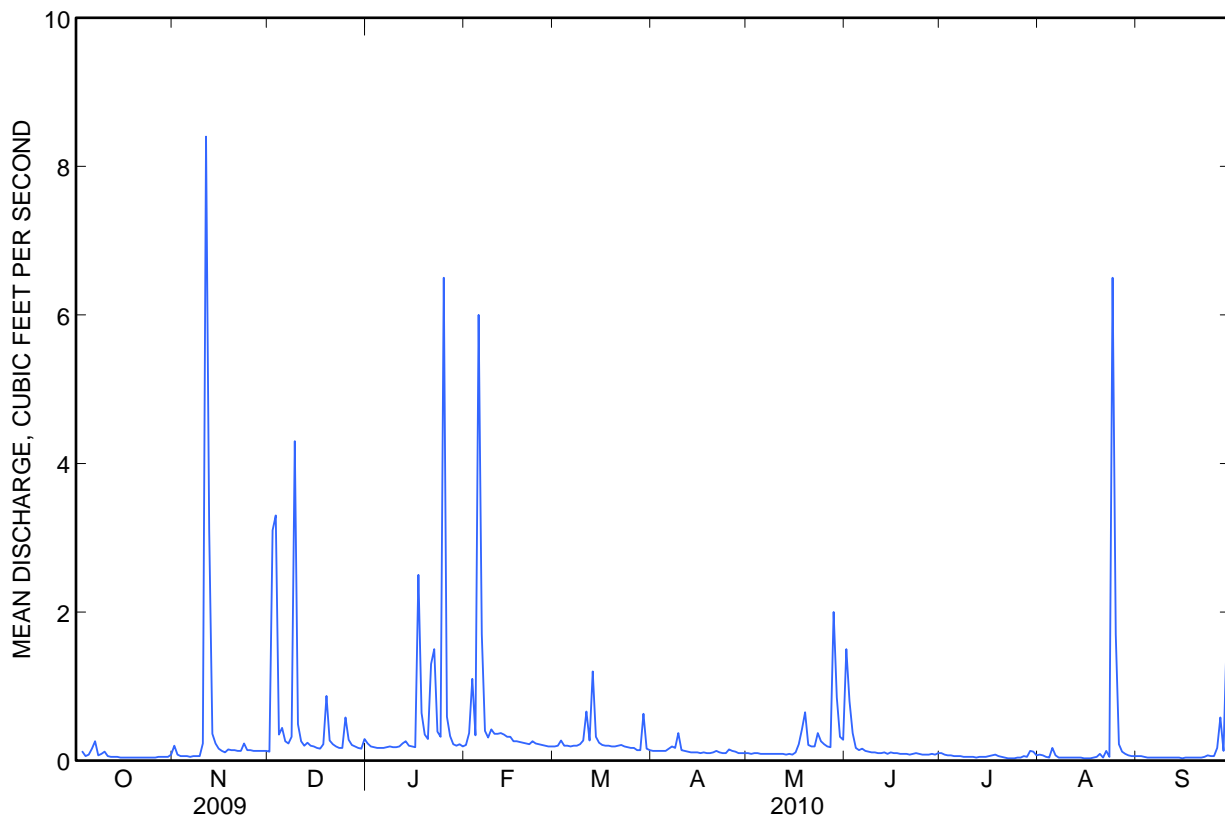
0208762755 UNNAMED TRIBUTARY TO SWIFT CREEK AT NORTH CAROLINA STATE UNIVERSITY RESEARCH UNIT,
RALEIGH, NC—Continued

DISCHARGE, CUBIC FEET PER SECOND
WATER YEAR OCTOBER 2009 TO SEPTEMBER 2010
DAILY MEAN VALUES

[---, not available; e, estimated]

Day	Oct	Nov	Dec	Jan	Feb	Mar	Apr	May	Jun	Jul	Aug	Sep
1	---	e0.20	e0.12	0.23	0.21	0.19	0.13	e0.10	e1.5	0.10	0.08	0.06
2	---	e0.08	3.1	0.19	0.37	0.20	0.13	e0.09	e0.80	0.08	0.07	0.06
3	0.12	0.06	3.3	0.18	1.1	0.27	0.13	e0.10	e0.37	e0.07	0.05	0.05
4	0.06	e0.06	0.35	0.17	0.34	0.20	0.13	e0.10	e0.17	e0.07	0.04	0.04
5	0.08	e0.06	0.44	0.17	6.0	0.20	0.13	e0.09	e0.14	e0.06	0.17	0.04
6	0.16	e0.05	0.26	0.17	1.7	0.19	0.16	e0.09	e0.16	e0.06	0.07	0.04
7	0.26	e0.06	0.23	0.18	0.40	0.20	0.19	e0.09	e0.13	e0.06	0.04	0.04
8	0.07	e0.06	0.32	0.19	0.31	0.20	0.17	e0.09	e0.12	e0.05	0.04	0.04
9	0.09	e0.06	4.3	0.18	0.42	0.22	0.37	e0.09	e0.11	e0.05	0.04	0.04
10	0.12	0.23	0.49	0.18	0.36	0.27	0.14	e0.09	e0.11	e0.05	0.04	0.04
11	0.06	8.4	0.26	0.19	0.36	0.66	0.13	e0.09	e0.10	e0.05	0.04	0.04
12	0.05	3.1	0.20	0.23	0.37	0.27	0.12	e0.09	e0.10	0.04	0.04	0.04
13	0.05	0.36	0.24	0.26	0.35	1.2	0.11	e0.08	e0.11	0.05	0.04	0.04
14	0.05	0.23	0.20	0.20	0.32	0.32	0.11	e0.09	e0.09	0.05	0.04	0.04
15	e0.04	0.16	0.19	0.19	0.32	0.24	0.11	e0.08	e0.11	0.05	0.03	0.03
16	e0.04	0.13	0.17	0.18	0.26	0.21	0.10	e0.11	e0.10	0.06	0.03	0.04
17	e0.04	0.11	0.16	2.5	0.26	0.20	0.11	e0.22	e0.10	0.07	0.03	0.04
18	e0.04	0.15	0.22	0.64	0.25	0.20	0.10	0.42	e0.09	0.08	0.04	0.04
19	e0.04	e0.14	0.87	0.35	0.24	0.19	0.10	0.65	e0.09	e0.06	0.05	0.04
20	e0.04	e0.14	0.27	0.29	0.23	0.19	0.11	0.21	e0.09	e0.05	0.09	0.04
21	e0.04	e0.13	0.22	1.3	0.22	0.20	0.13	0.19	e0.08	e0.04	0.04	0.04
22	e0.04	e0.13	0.19	1.5	0.26	0.21	0.11	0.19	e0.09	0.03	0.13	0.05
23	e0.04	e0.23	0.17	0.39	0.23	0.19	0.10	0.37	e0.10	0.03	0.05	0.07
24	e0.04	e0.14	0.17	0.32	0.22	0.18	0.10	0.26	e0.09	0.03	6.5	0.06
25	e0.04	e0.14	0.58	6.5	0.21	0.17	0.15	0.22	e0.08	0.04	1.7	0.06
26	e0.04	e0.13	0.28	0.59	0.20	0.17	0.13	0.19	e0.08	0.04	0.22	0.17
27	e0.05	e0.13	0.21	0.33	0.19	0.14	0.12	0.18	e0.08	0.06	0.12	0.58
28	e0.05	e0.13	0.19	0.22	0.19	0.14	e0.10	e2.0	0.09	0.05	0.09	0.13
29	0.05	e0.13	0.17	0.20	---	0.63	e0.10	e0.85	0.08	0.13	0.07	1.7
30	0.05	e0.13	0.16	0.22	---	0.16	e0.10	e0.32	0.10	0.12	0.06	10
31	0.08	---	0.29	0.19	---	0.14	---	e0.28	---	0.07	0.06	---
Total	---	15.26	18.32	18.63	15.89	8.15	3.92	8.02	5.46	1.85	10.11	13.70
Mean	---	0.51	0.59	0.60	0.57	0.26	0.13	0.26	0.18	0.06	0.33	0.46
Max	---	8.4	4.3	6.5	6.0	1.2	0.37	2.0	1.5	0.13	6.5	10
Min	---	0.05	0.12	0.17	0.19	0.14	0.10	0.08	0.08	0.03	0.03	0.03

0208762755 UNNAMED TRIBUTARY TO SWIFT CREEK AT NORTH CAROLINA STATE UNIVERSITY RESEARCH UNIT,
RALEIGH, NC—Continued



0208762755 UNNAMED TRIBUTARY TO SWIFT CREEK AT NORTH CAROLINA STATE UNIVERSITY RESEARCH UNIT,
 RALEIGH, NC—Continued

DISCHARGE, CUBIC FEET PER SECOND
 WATER YEAR OCTOBER 2010 TO SEPTEMBER 2011
 DAILY MEAN VALUES

[---, not available; e, estimated]

Day	Oct	Nov	Dec	Jan	Feb	Mar	Apr	May	Jun	Jul	Aug	Sep
1	0.59	e0.09	0.13	0.23	---	---	---	---	---	---	---	---
2	0.33	e0.09	0.11	0.31	---	---	---	---	---	---	---	---
3	e0.20	e0.09	0.12	0.20	---	---	---	---	---	---	---	---
4	e0.15	e0.11	0.12	0.17	---	---	---	---	---	---	---	---
5	0.14	e0.09	0.13	0.15	---	---	---	---	---	---	---	---
6	0.14	e0.09	0.15	---	---	---	---	---	---	---	---	---
7	e0.13	e0.09	0.16	---	---	---	---	---	---	---	---	---
8	e0.13	e0.09	0.16	---	---	---	---	---	---	---	---	---
9	e0.13	e0.08	0.16	---	---	---	---	---	---	---	---	---
10	e0.11	e0.08	0.16	---	---	---	---	---	---	---	---	---
11	e0.12	e0.08	0.18	---	---	---	---	---	---	---	---	---
12	e0.11	e0.09	0.23	---	---	---	---	---	---	---	---	---
13	e0.11	e0.09	0.18	---	---	---	---	---	---	---	---	---
14	e0.20	e0.08	0.17	---	---	---	---	---	---	---	---	---
15	e0.12	0.09	0.17	---	---	---	---	---	---	---	---	---
16	e0.12	0.09	0.25	---	---	---	---	---	---	---	---	---
17	e0.11	0.11	0.34	---	---	---	---	---	---	---	---	---
18	e0.11	0.11	0.17	---	---	---	---	---	---	---	---	---
19	e0.11	0.12	0.16	---	---	---	---	---	---	---	---	---
20	e0.13	0.12	0.15	---	---	---	---	---	---	---	---	---
21	e0.11	0.11	0.16	---	---	---	---	---	---	---	---	---
22	e0.11	0.09	0.15	---	---	---	---	---	---	---	---	---
23	e0.10	0.11	0.15	---	---	---	---	---	---	---	---	---
24	e0.10	0.10	0.17	---	---	---	---	---	---	---	---	---
25	e0.10	0.10	0.17	---	---	---	---	---	---	---	---	---
26	e0.12	0.16	0.20	---	---	---	---	---	---	---	---	---
27	e0.10	0.15	0.19	---	---	---	---	---	---	---	---	---
28	e0.10	0.13	0.19	---	---	---	---	---	---	---	---	---
29	e0.09	0.12	0.19	---	---	---	---	---	---	---	---	---
30	e0.09	0.11	0.19	---	---	---	---	---	---	---	---	---
31	e0.10	---	0.19	---	---	---	---	---	---	---	---	---
Total	4.41	3.06	5.35	---	---	---	---	---	---	---	---	---
Mean	0.14	0.10	0.17	---	---	---	---	---	---	---	---	---
Max	0.59	0.16	0.34	---	---	---	---	---	---	---	---	---
Min	0.09	0.08	0.11	---	---	---	---	---	---	---	---	---

0208762755 UNNAMED TRIBUTARY TO SWIFT CREEK AT NORTH CAROLINA STATE UNIVERSITY RESEARCH UNIT,
RALEIGH, NC—Continued

