

Plate 27. MARINE DIATOMS FROM THE GALAPAGOS ISLANDS

Source of Material

Galapagos Islands, Santa Cruz. A very sparse sample collected by J.A. Broadhead August 16th, 1986.

Galapagos Islands, Santa Cruz. Sample 1, from Academy Bay (Puerto Ayora), south coast of Santa Cruz; skimming of thin surface film resulting from rising tide. Collected by Tui de Roy August 9th, 1991.

Galapagos Islands, Santa Cruz. Sample 2, from Academy Bay (Puerto Ayora), south coast of Santa Cruz; from thick silty mud covered in greenish algal slime on flat rock ledges at low tide. Collected by Tui de Roy August 9th, 1991.

Galapagos Islands, Santa Cruz. Sample 3, from Academy Bay (Puerto Ayora), south coast of Santa Cruz; from greenish-brown slime on mooring rope. Collected by Tui de Roy August 9th, 1991.

Sample #1 one bottle - very sparse.

Sample #2 four bottles - one unbleached (HCL rinsed); one heavy fraction; one sieved under 38 μ m and one sieved over 38 μ m.

Sample #3 four bottles - same sequence as for sample #2.

These samples are kept in the private collection of Stuart R. Stidolph and will eventually be deposited in the collections of NIWA, Wellington, New Zealand.

Plate Twenty-seven:

- 119 *Trigonium graeffeanum* (Witt) Hendey 1971. See Schmidt's Atlas (1874-1959, pl. 79, fig. 1) and Hendey (1971, p. 382, fig. 29).
- 120-123 *Surirella fastuosa* (Ehrenberg) Ehrenberg 1843. See Hendey (1971, p. 407, fig. 30) which equates to figs. 122 and 123. See also Paddock (1985, p. 418, pl. 1, figs. 1-7 and pl. 2, figs. 1-19) for variety of forms.
- 124 *Paralia sulcata* (Ehrenberg) Cleve 1873. See Van Heurck (1880-1885, pl. 91, figs 17, 24) and Hendey (1964, p. 73, pl. 23, fig. 5).
- 125 *Surirella fastuosa* (Ehrenberg) Ehrenberg 1843. See Hendey (1971, p. 407, fig. 30) and also Paddock (1985, p. 418, pl. 1, figs. 1-7; pl. 2, figs. 1-19) for variety of forms.
- 126 *Thalassiosira decipiens* (Grunow) E. Jørgensen 1905. A somewhat doubtful

identification, but its small size of 25µm agrees well with that in the reference. See Hasle (1979, p. 85, pl. 5, fig. 29a).

127 *Pseudoamphiprora* (?) sp. indet. Identification is uncertain.

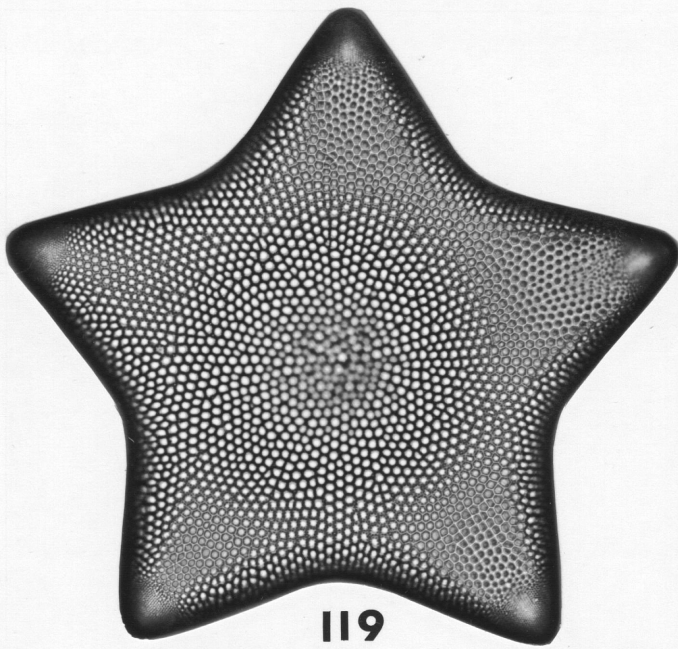
128 *Hyalosynedra laevigata* (Grunow) Williams and Round 1986. See Hustedt (1932, figs. 706a-c), given as *Synedra laevigata*. Fig. 128b is an enlargement of specimen in fig. 128a showing striation details.

129-31 *Synedra formosa* Hantzsch in Rabenhorst 1863. See Peragallo and Peragallo (1897-1908, pl.78, fig. 6). Fig. 129 is of multiple frustules in girdle view.

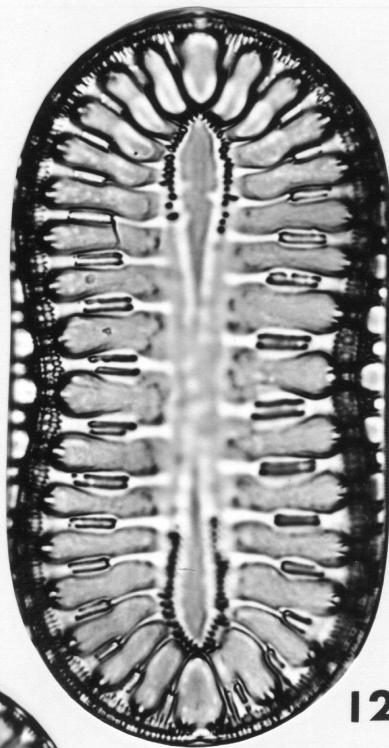
132 *Stictodesmis australis* Greville 1863. See Greville (1863, p. 535, pl. 13, figs. 1-4); also Greville in Williams (1988, pl. 55, figs. 5-7) and the specimen from Muntok, Singapore, pl. 17, fig. 32) in this atlas. The Galapagos specimens lack the spatulate apices of *S. australis*. However, in other respects they appear similar.

Magnifications: figs 120, 129, 130, 131: x750; fig. 119: x500; figs 126, 127, 128b, 132: x2000; all others: x1000

Scale Bar: scale bar is 60 microns for figures at x500; 40 microns at x750; 30 microns at x1000; 15 microns at x2000



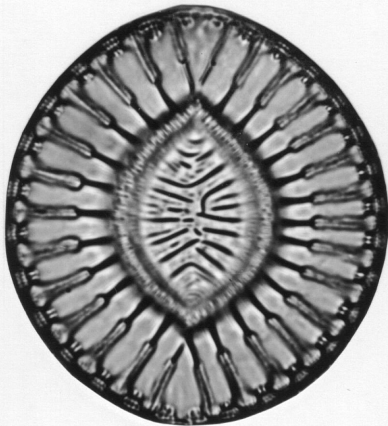
119



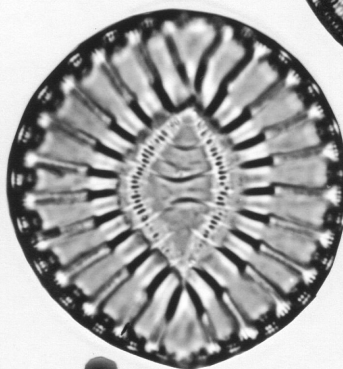
120



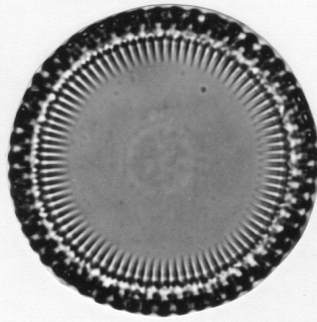
121



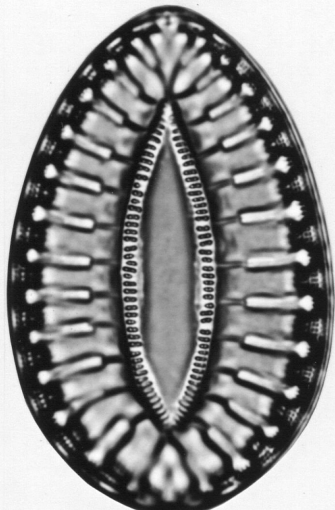
122



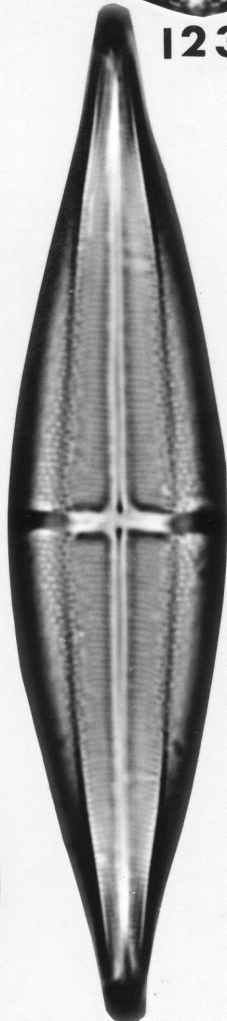
123



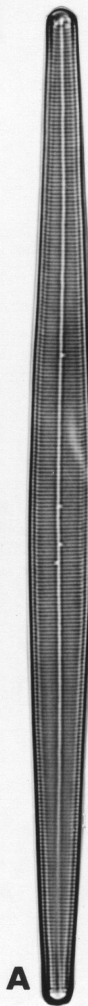
124



125



127

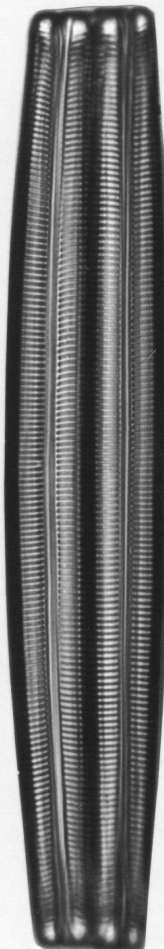


A

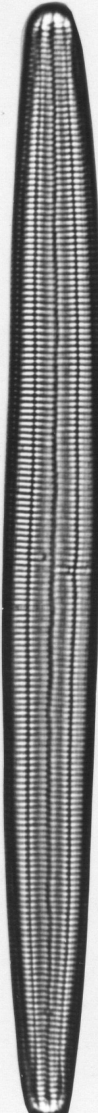


B

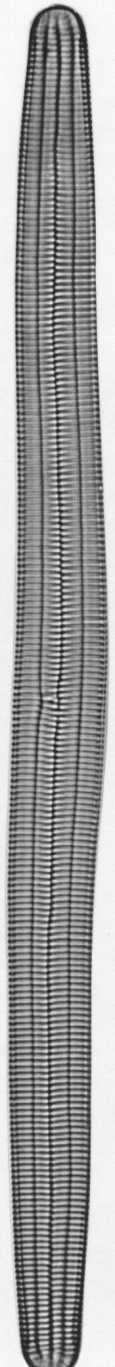
128



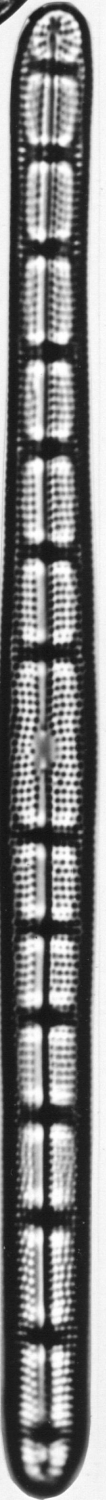
129



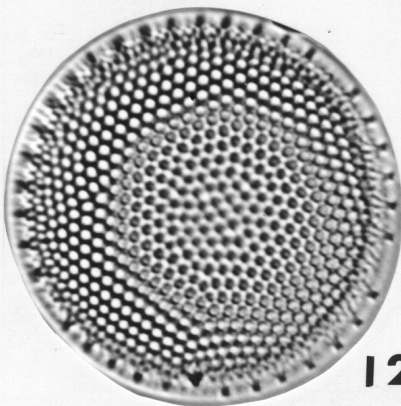
130



131



132



126