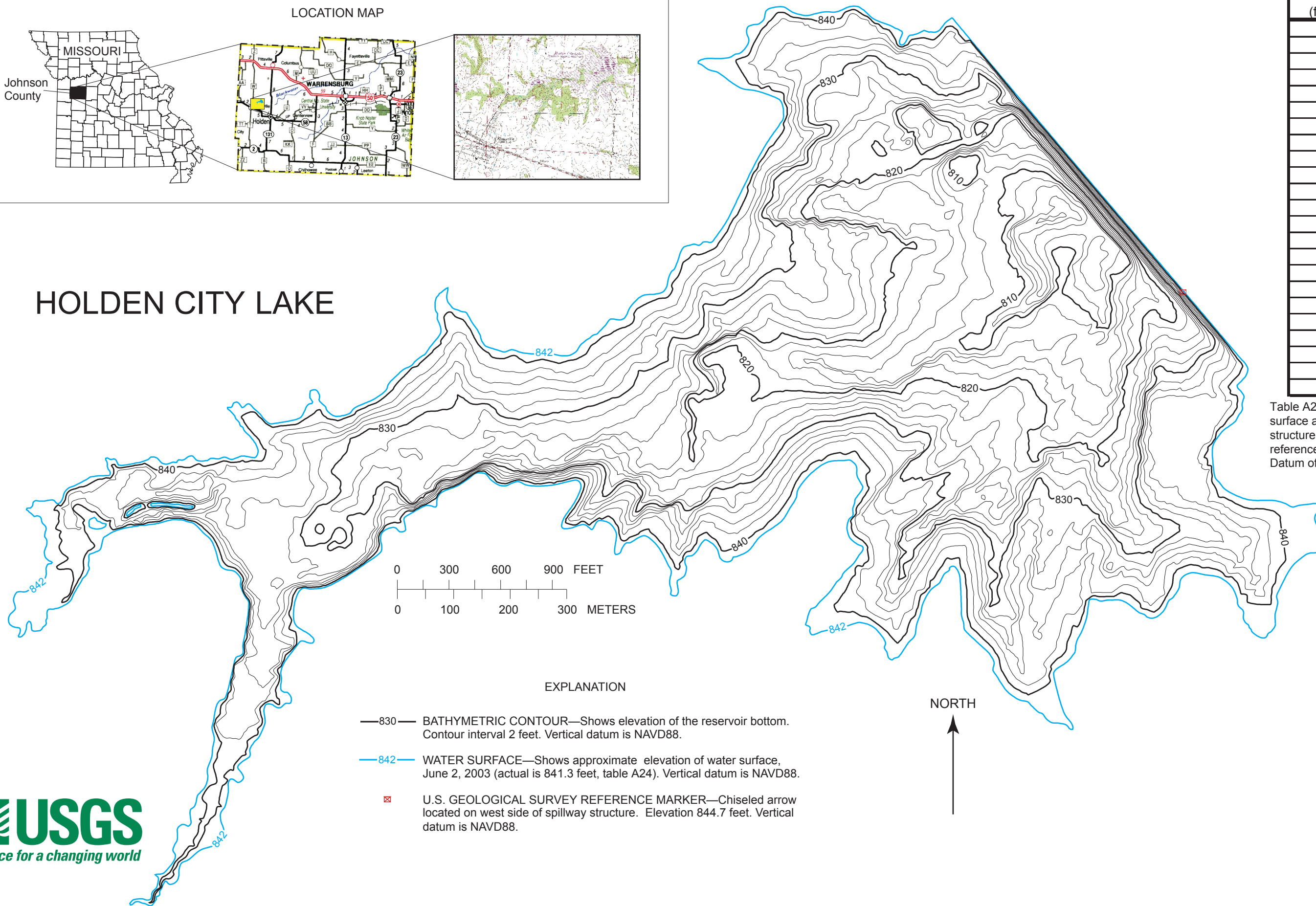


# HOLDEN CITY LAKE



- EXPLANATION**
- 830— BATHYMETRIC CONTOUR—Shows elevation of the reservoir bottom. Contour interval 2 feet. Vertical datum is NAVD88.
  - 842— WATER SURFACE—Shows approximate elevation of water surface, June 2, 2003 (actual is 841.3 feet, table A24). Vertical datum is NAVD88.
  - ☒ U.S. GEOLOGICAL SURVEY REFERENCE MARKER—Chiseled arrow located on west side of spillway structure. Elevation 844.7 feet. Vertical datum is NAVD88.

Elevation (feet)	Area (acres)	Volume (acre-ft)
802.0	0.07	0.01
804.0	1.0	0.8
806.0	3.2	4.9
808.0	6.2	14
810.0	10	31
812.0	17	58
814.0	26	101
816.0	36	162
818.0	47	245
820.0	58	350
822.0	74	480
824.0	90	650
826.0	105	840
828.0	124	1,070
830.0	143	1,340
832.0	162	1,640
834.0	184	1,990
836.0	207	2,380
837.0	222	2,590
838.0	237	2,820
840.0	262	3,320
841.3	277	3,670
841.8	292	3,810

Table A24. Lake elevations and respective surface areas and volumes. Top of spillway structure elevation is 841.8 feet. Elevations referenced to North American Vertical Datum of 1988 (NAVD88).



Figure A24. Bathymetric map and area/volume table for the Holden City Lake near Kingsville, Missouri.

In cooperation with Missouri Department of Natural Resources