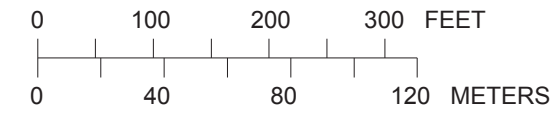
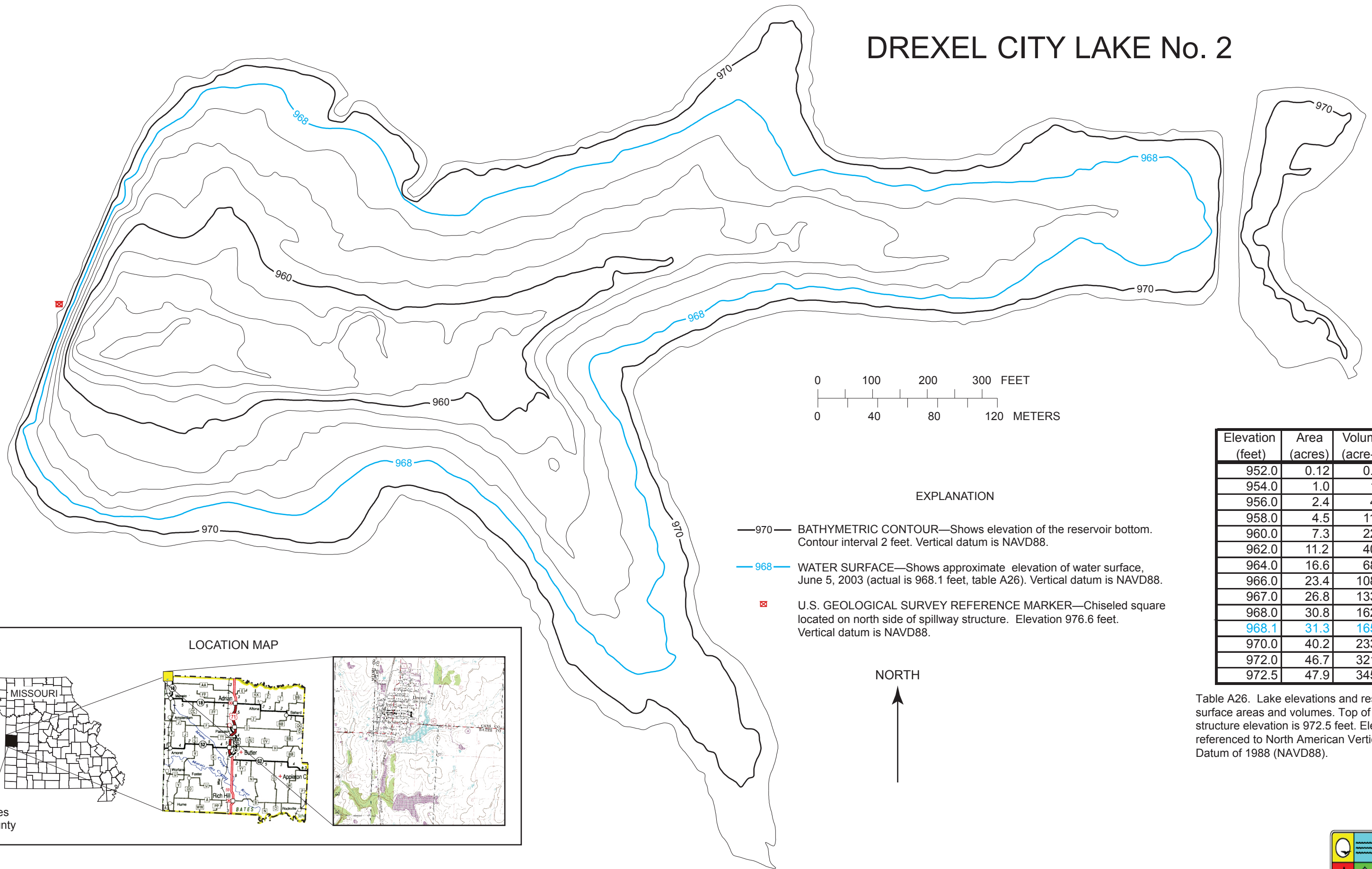


DREXEL CITY LAKE No. 2



EXPLANATION

- 970— BATHYMETRIC CONTOUR—Shows elevation of the reservoir bottom. Contour interval 2 feet. Vertical datum is NAVD88.
- 968— WATER SURFACE—Shows approximate elevation of water surface, June 5, 2003 (actual is 968.1 feet, table A26). Vertical datum is NAVD88.
- ☒ U.S. GEOLOGICAL SURVEY REFERENCE MARKER—Chiseled square located on north side of spillway structure. Elevation 976.6 feet. Vertical datum is NAVD88.

Elevation (feet)	Area (acres)	Volume (acre-ft)
952.0	0.12	0.04
954.0	1.0	1.0
956.0	2.4	4.3
958.0	4.5	11.1
960.0	7.3	22.6
962.0	11.2	40.9
964.0	16.6	68.5
966.0	23.4	108.3
967.0	26.8	133.3
968.0	30.8	162.1
968.1	31.3	165.2
970.0	40.2	233.4
972.0	46.7	321.5
972.5	47.9	345.1

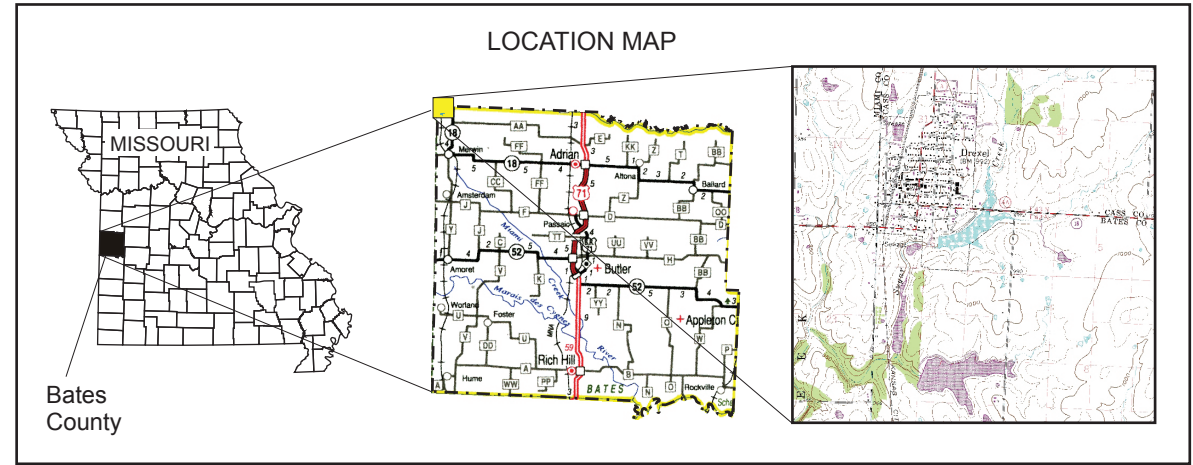


Table A26. Lake elevations and respective surface areas and volumes. Top of spillway structure elevation is 972.5 feet. Elevations referenced to North American Vertical Datum of 1988 (NAVD88).



Figure A26. Bathymetric map and area/volume table for the Drexel City Lake No. 2 near Drexel, Missouri.

