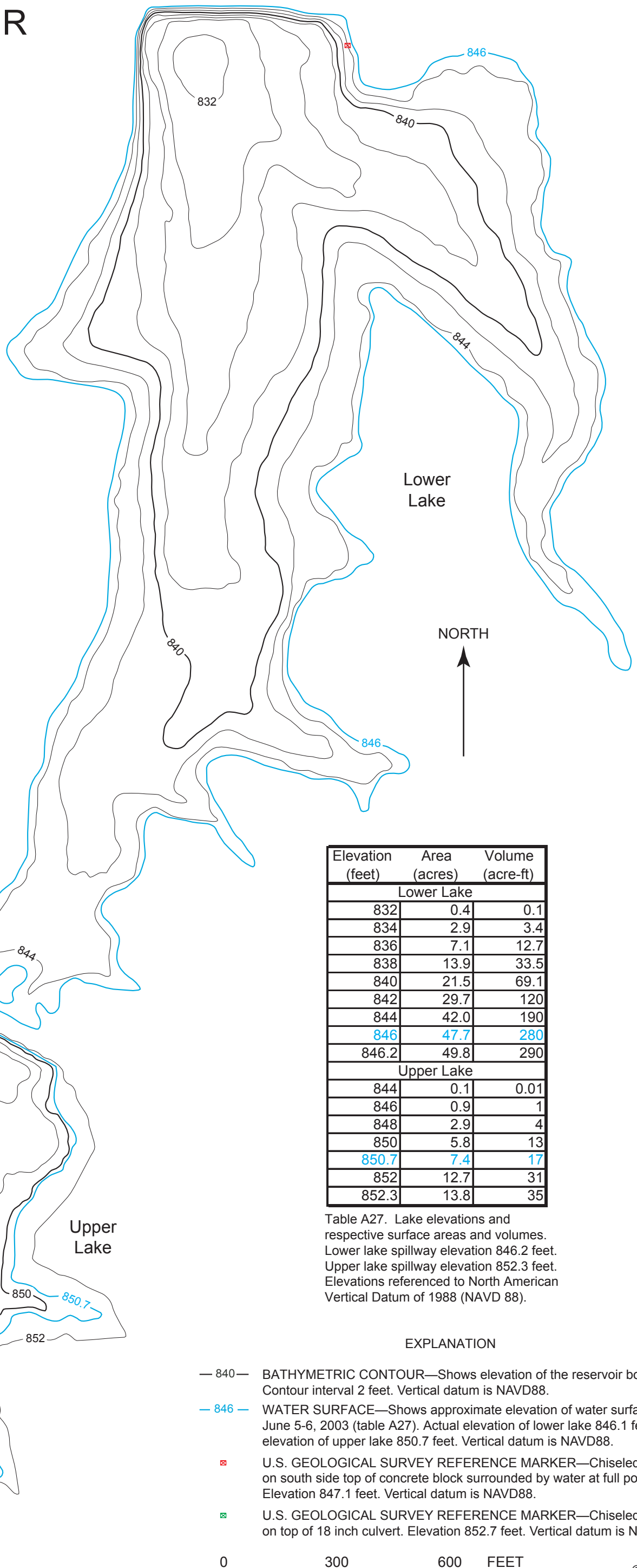
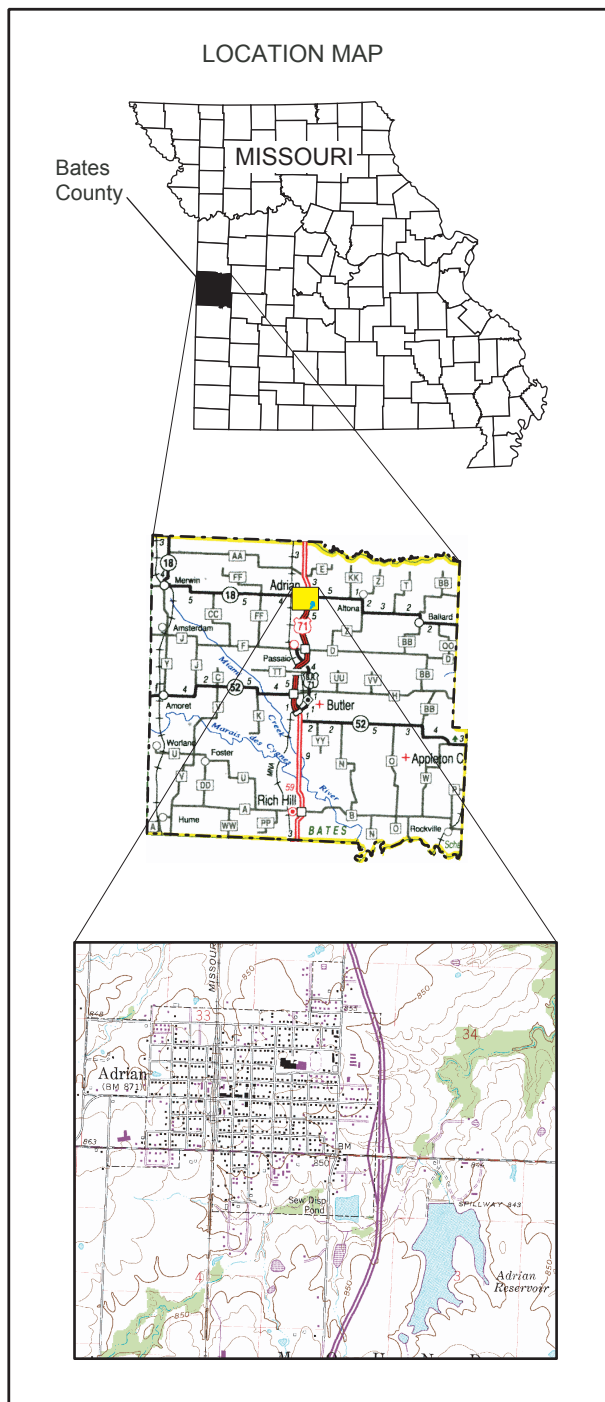


ADRIAN RESERVOIR



Elevation (feet)	Area (acres)	Volume (acre-ft)
Lower Lake		
832	0.4	0.1
834	2.9	3.4
836	7.1	12.7
838	13.9	33.5
840	21.5	69.1
842	29.7	120
844	42.0	190
846	47.7	280
846.2	49.8	290
Upper Lake		
844	0.1	0.01
846	0.9	1
848	2.9	4
850	5.8	13
850.7	7.4	17
852	12.7	31
852.3	13.8	35

Table A27. Lake elevations and respective surface areas and volumes. Lower lake spillway elevation 846.2 feet. Upper lake spillway elevation 852.3 feet. Elevations referenced to North American Vertical Datum of 1988 (NAVD 88).

EXPLANATION

- 840 — BATHYMETRIC CONTOUR—Shows elevation of the reservoir bottom. Contour interval 2 feet. Vertical datum is NAVD88.
- 846 — WATER SURFACE—Shows approximate elevation of water surface, June 5-6, 2003 (table A27). Actual elevation of lower lake 846.1 feet. Actual elevation of upper lake 850.7 feet. Vertical datum is NAVD88.
- ☒ U.S. GEOLOGICAL SURVEY REFERENCE MARKER—Chiseled arrow on south side top of concrete block surrounded by water at full pool. Elevation 847.1 feet. Vertical datum is NAVD88.
- ☒ U.S. GEOLOGICAL SURVEY REFERENCE MARKER—Chiseled arrow on top of 18 inch culvert. Elevation 852.7 feet. Vertical datum is NAVD88.

