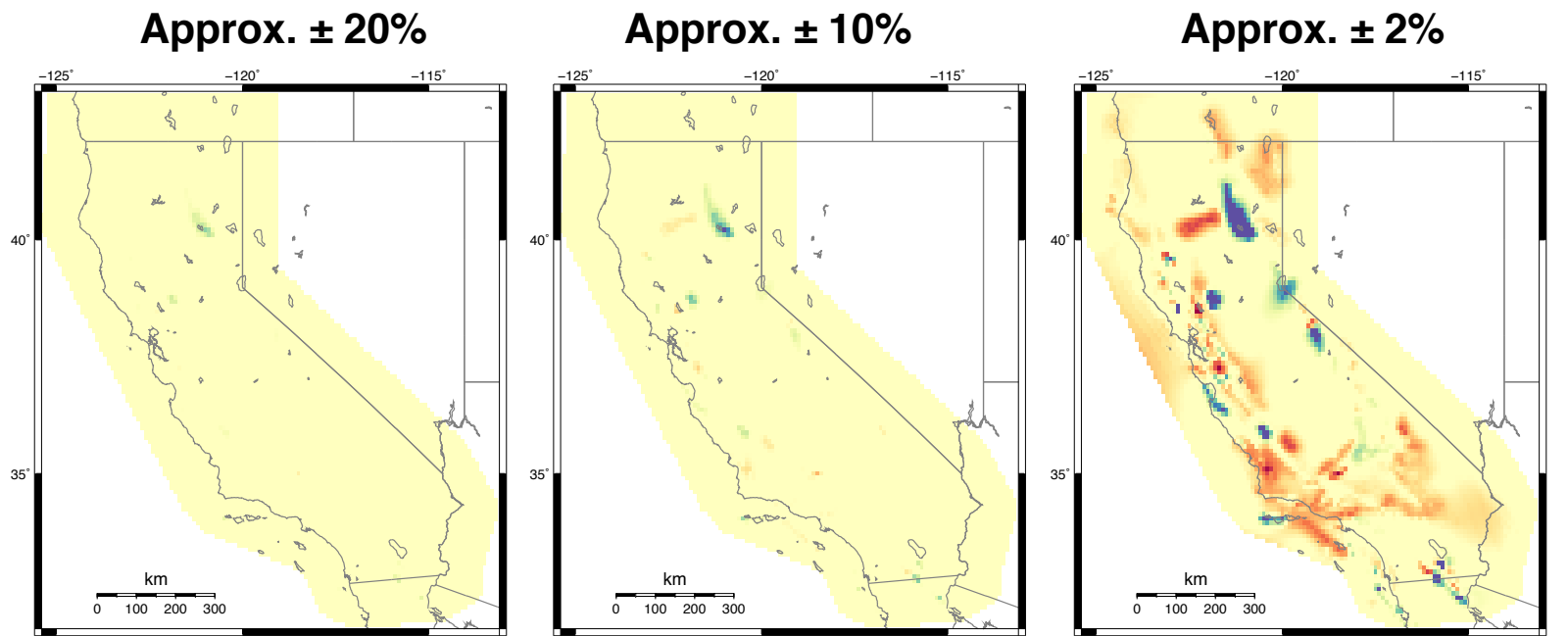


UCERF3.3 Branch Averaged Solutions (2% in 50 yrs. PGA)

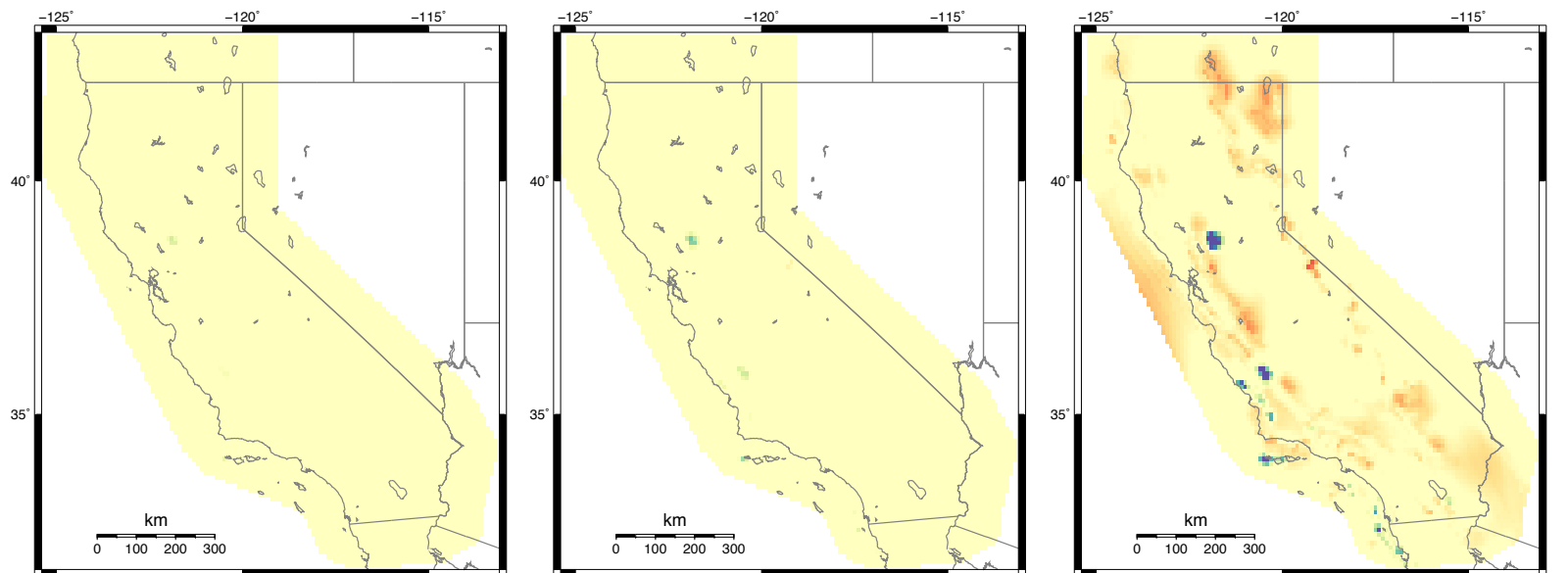
Maps showing the ratio of ground motion implied by the weighted combination of branch averaged inversion solutions to the total implied by UCERF3. Ground motion is measured as the peak ground acceleration (PGA) with a 2% probability of being exceeded in 50 yrs.

Ground motion derived from 8 solutions provides a close approximation to that computed from the full logic tree (within 1%, excepting a few locations). Ground motion derived from 40 solutions provides an exact match to the full logic tree.

**Fault Models
(2 solutions)**



**Fault & Deformation Models
(8 solutions)**



**Fault Models, Def. Models, & Mag-Scaling
(40 solutions)**

