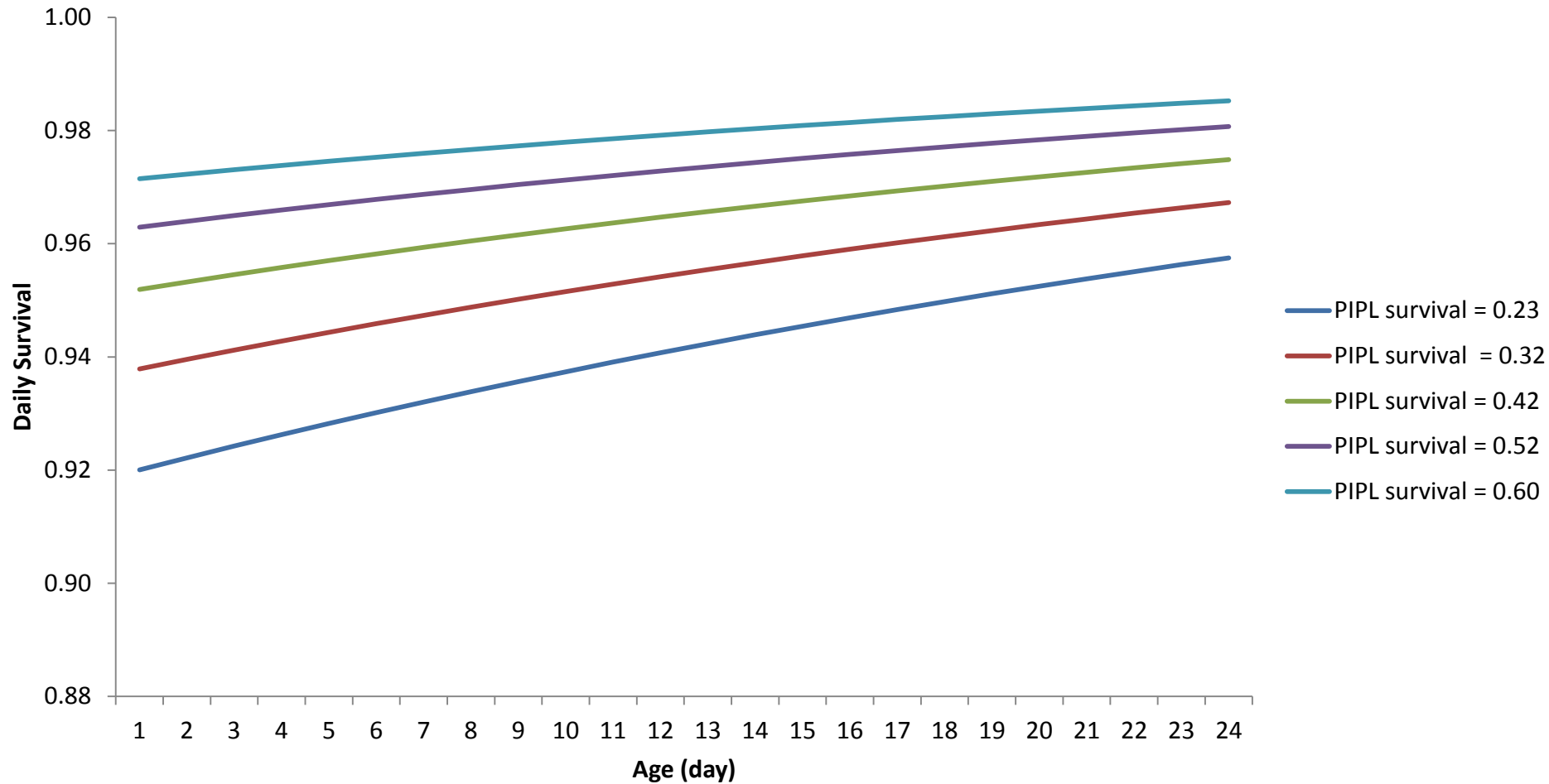




Simulated Piping Plover Survival

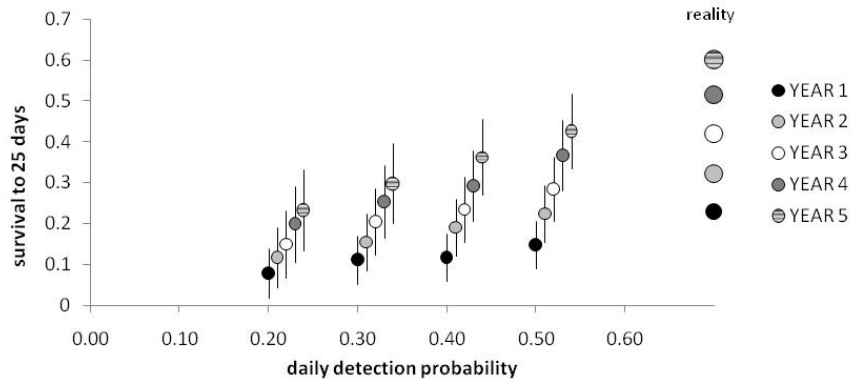




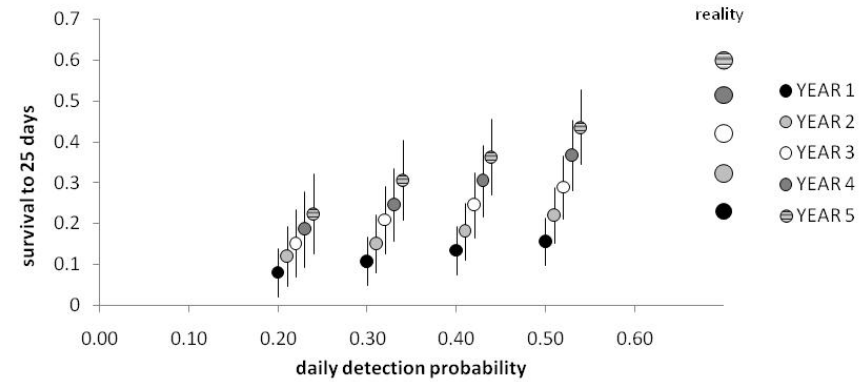
Piping Plover Survival

(2 visits between day 18 & 25)

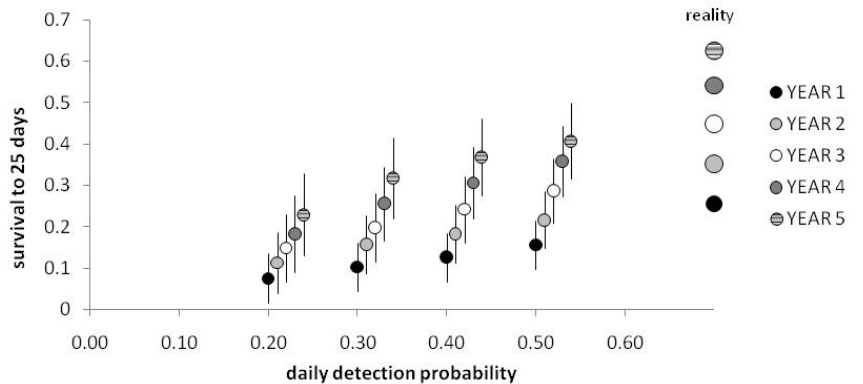
SAMPLE SIZE = 50



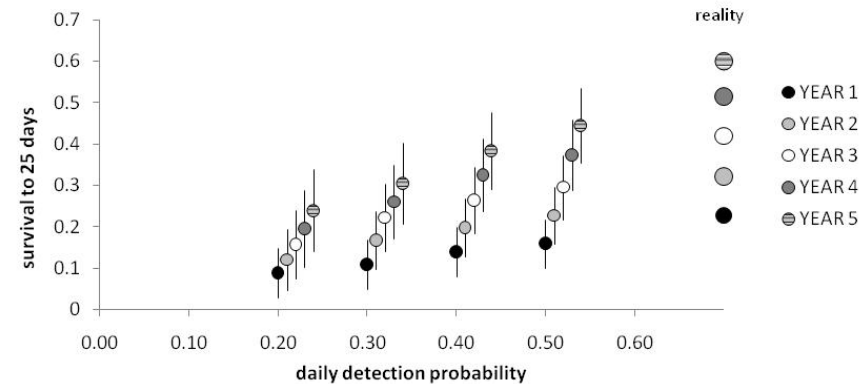
SAMPLE SIZE = 100



SAMPLE SIZE = 75



SAMPLE SIZE = 125





Piping Plover Survival

(2 visits between day 18 & 25)

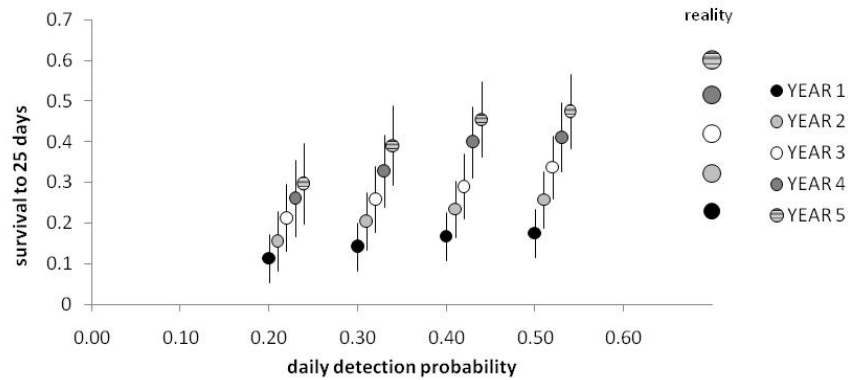
N	detection	no. visits	AIC_c (year)	AIC_c (constant)	Probability
50	0.5	2	1392.71554	1396.51807	0.74
50	0.4	2	1198.75996	1200.89201	0.53
50	0.3	2	999.52864	999.62203	0.44
50	0.2	2	753.25775	752.0346	0.3
75	0.5	2	2082.16101	2088.66156	0.89
75	0.4	2	1801.03675	1806.94083	0.77
75	0.3	2	1495.18961	1499.27611	0.74
75	0.2	2	1117.26027	1117.919	0.43
100	0.5	2	2763.20818	2775.48023	0.95
100	0.4	2	2390.33578	2398.7089	0.85
100	0.3	2	1965.75774	1971.56145	0.78
100	0.2	2	1482.44161	1484.33318	0.57
125	0.5	2	3691.94578	3712.04753	1
125	0.4	2	3207.02489	3222.14969	0.97
125	0.3	2	2630.57896	2639.73251	0.87
125	0.2	2	1977.24704	1981.711	0.74



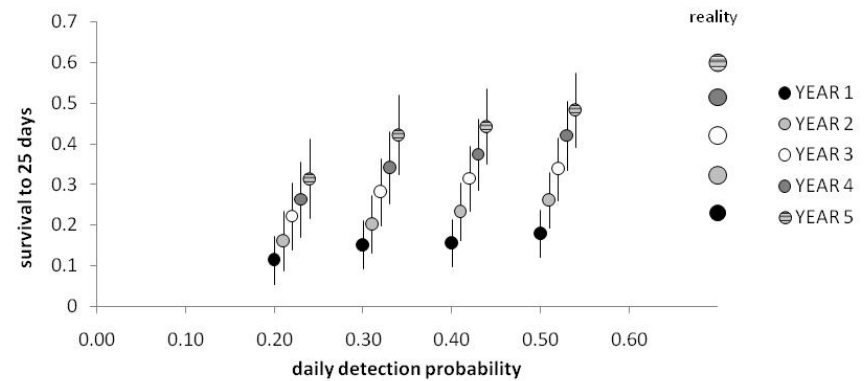
Piping Plover Survival

(3 visits between day 18 & 25)

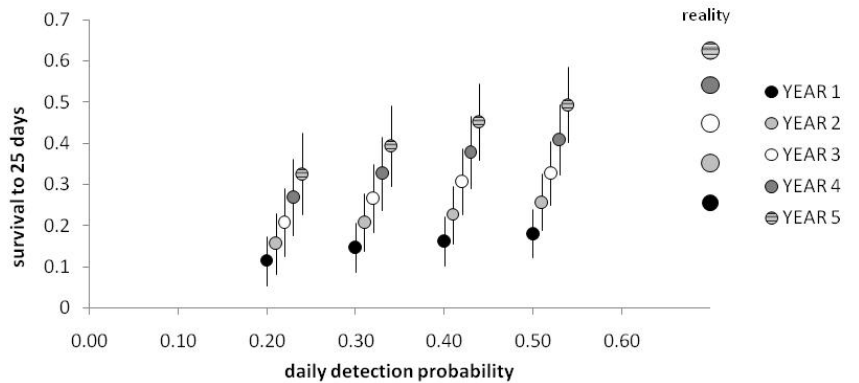
SAMPLE SIZE = 50



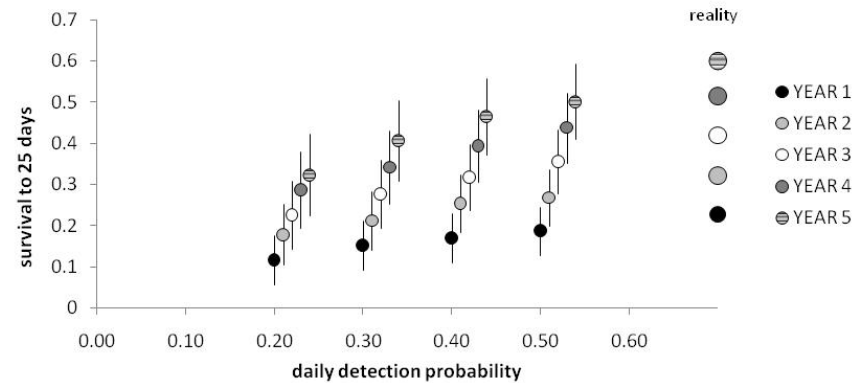
SAMPLE SIZE = 100



SAMPLE SIZE = 75



SAMPLE SIZE = 125





Piping Plover Survival

(3 visits between day 18 & 25)

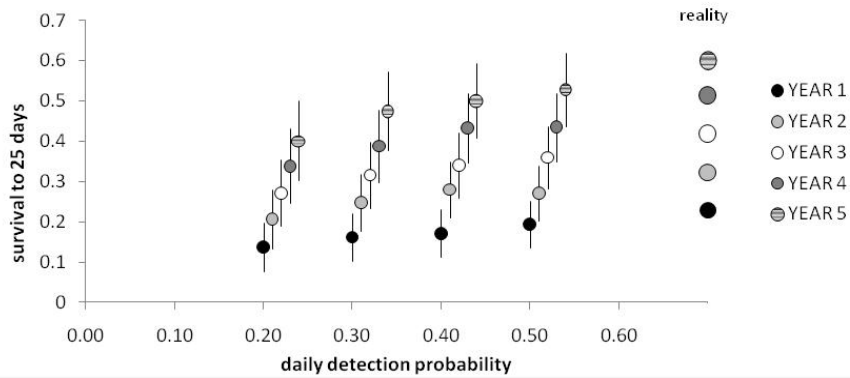
N	detection	AIC_c (year)	AIC_c (constant)	Probability
50	0.5	1569.71502	1574.71191	0.77
50	0.4	1395.52553	1399.84922	0.71
50	0.3	1156.52611	1158.20936	0.57
50	0.2	886.21829	886.22221	0.45
75	0.5	2351.13046	2361.00706	0.97
75	0.4	2083.38799	2091.65918	0.89
75	0.3	1741.92614	1746.57543	0.74
75	0.2	1312.60981	1315.65099	0.6
100	0.5	3134.81793	3150.03932	0.98
100	0.4	2751.70478	2764.46458	0.97
100	0.3	2326.68575	2336.33374	0.95
100	0.2	1753.49419	1757.82347	0.69
125	0.5	4251.18517	4276.29587	1
125	0.4	3728.20777	3747.61459	1
125	0.3	3105.98756	3120.78599	0.99
125	0.2	2350.34707	2359.24508	0.9



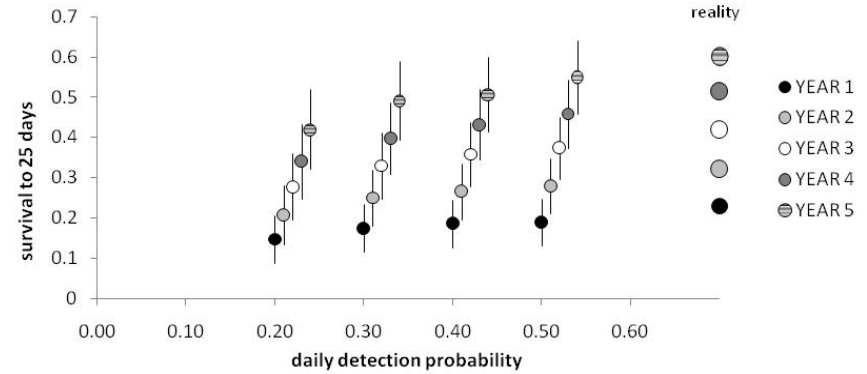
Piping Plover Survival

(4 visits between day 18 & 25)

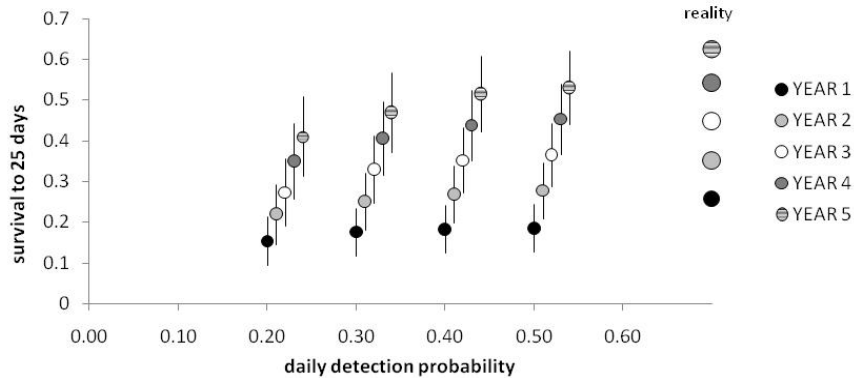
SAMPLE SIZE = 50



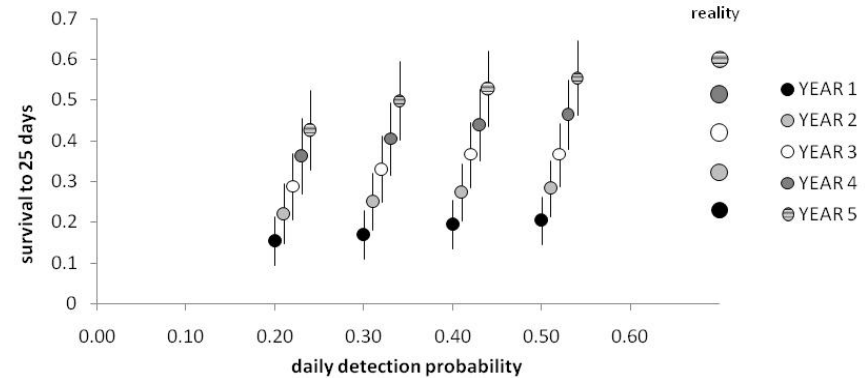
SAMPLE SIZE = 100



SAMPLE SIZE = 75



SAMPLE SIZE = 125





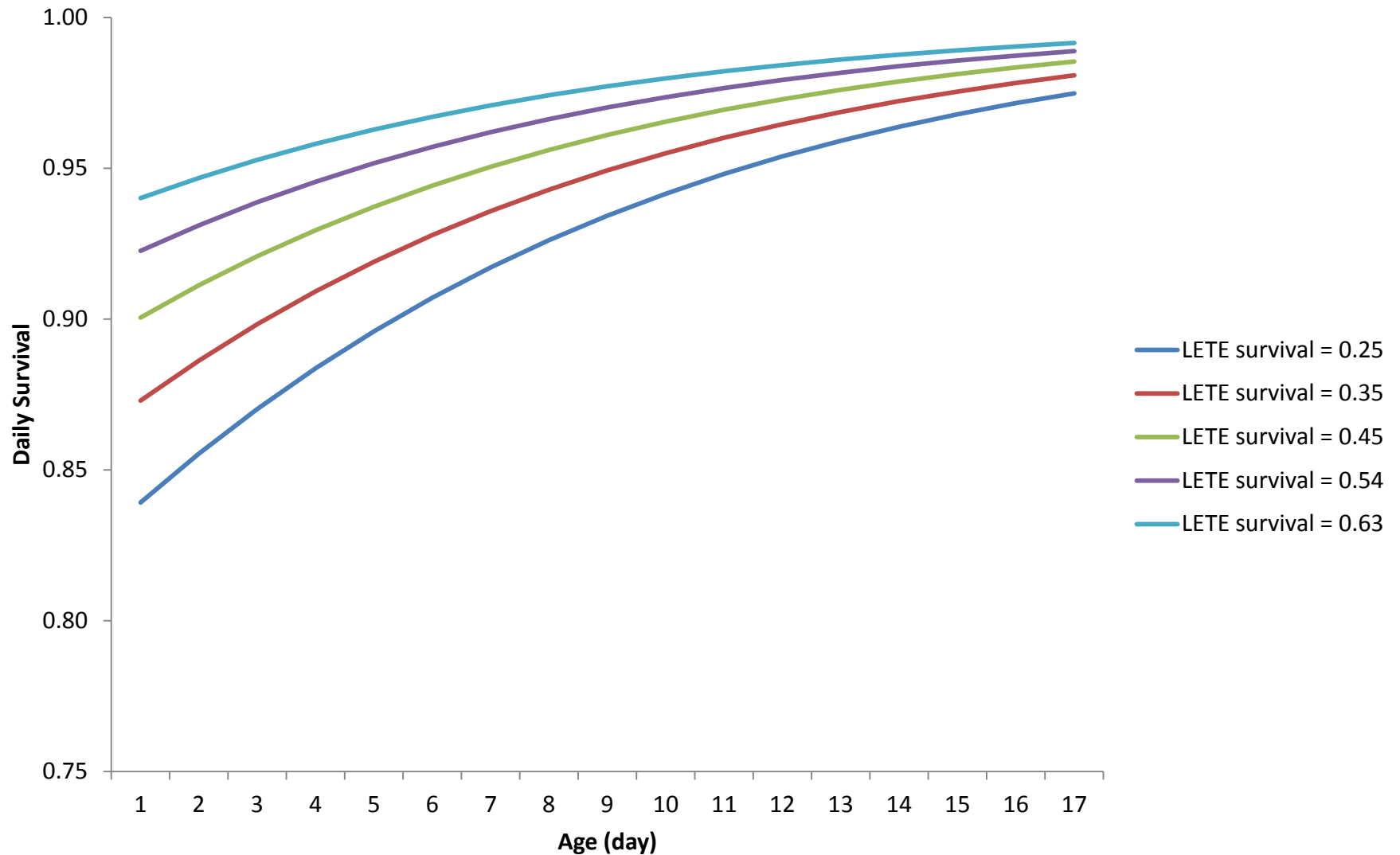
Piping Plover Survival

(4 visits between day 18 & 25)

N	Detection	AIC_c (year)	AIC_c (constant)	Probability
50	0.5	1706.01432	1712.31094	0.79
50	0.4	1541.38017	1547.69985	0.79
50	0.3	1300.05836	1304.46847	0.73
50	0.2	1002.43824	1004.36301	0.55
75	0.5	2553.64841	2566.73897	1
75	0.4	2311.71894	2323.16051	0.96
75	0.3	1969.90924	1977.05793	0.87
75	0.2	1509.20525	1512.61382	0.68
100	0.5	3419.62287	3440.51341	1
100	0.4	3059.3395	3074.82248	1
100	0.3	2621.41091	2634.50514	0.92
100	0.2	1986.32368	1993.7486	0.9
125	0.5	4634.28925	4665.47753	1
125	0.4	4161.7096	4187.7528	1
125	0.3	3501.40323	3524.05479	1
125	0.2	2690.33284	2702.78285	0.99



Simulated Least Tern Survival

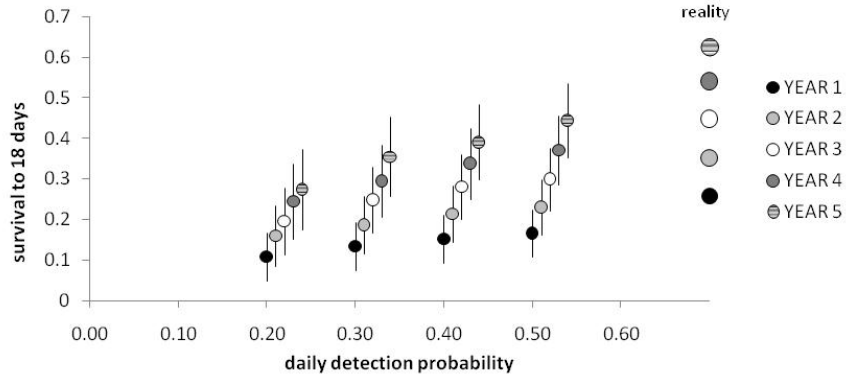




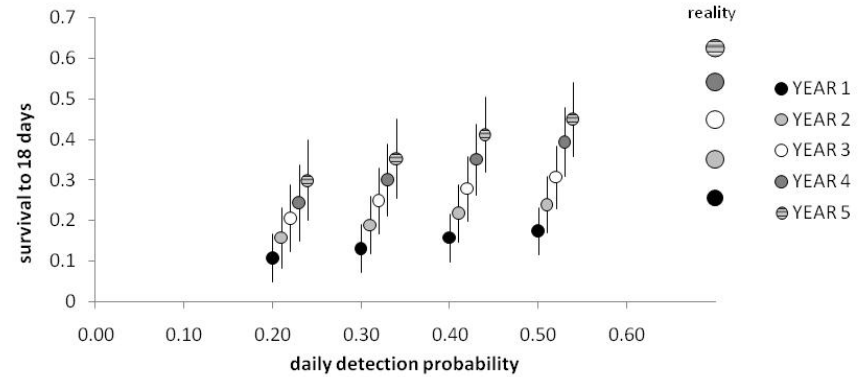
Least Tern Survival

(2 visits between day 14 & 18)

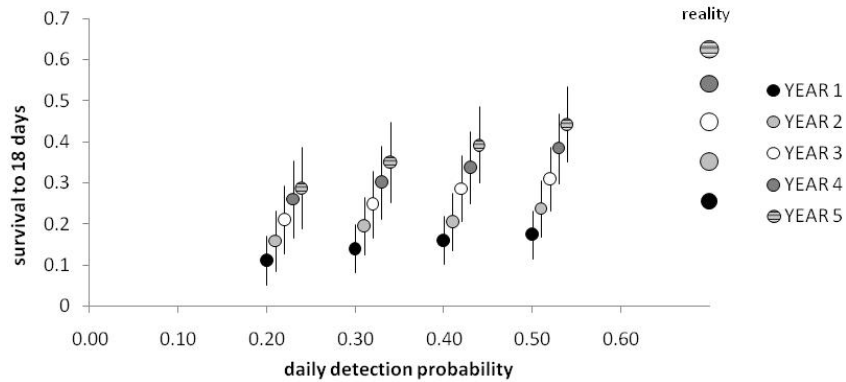
SAMPLE SIZE = 50



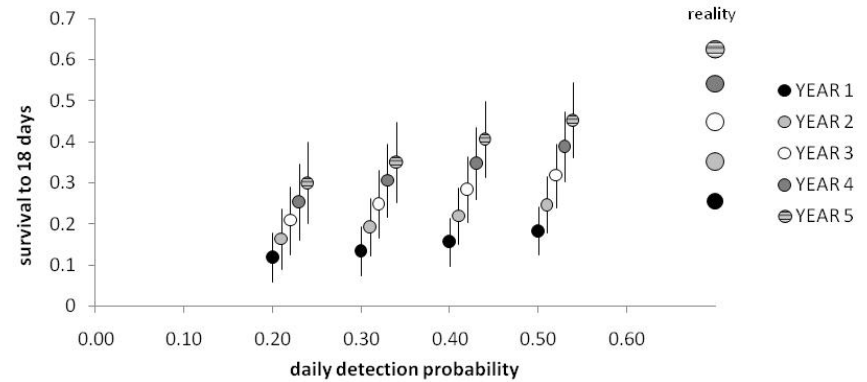
SAMPLE SIZE = 100



SAMPLE SIZE = 75



SAMPLE SIZE = 125





Least Tern Survival

(2 visits between day 14 & 18)

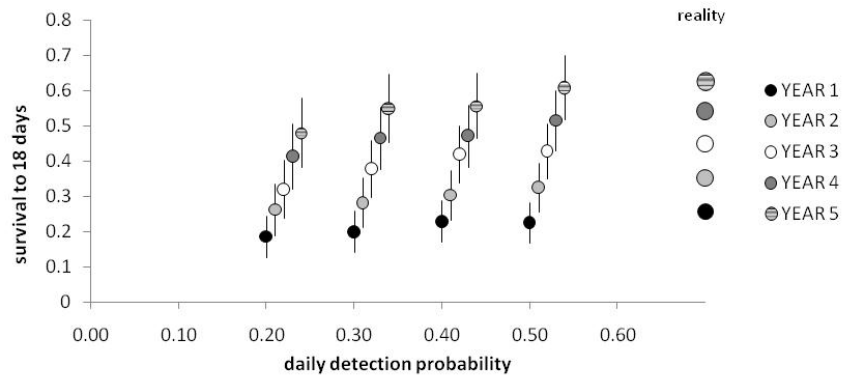
N	Detection	no. visits	AIC_c (year)	AIC_c (constant)	Probability
50	0.5	2	1269.62414	1273.66605	0.67
50	0.4	2	1127.03421	1129.16495	0.57
50	0.3	2	952.69124	952.90792	0.47
50	0.2	2	728.88745	726.78593	0.23
75	0.5	2	1914.66859	1921.90241	0.9
75	0.4	2	1685.68942	1690.41532	0.75
75	0.3	2	1433.64608	1436.01193	0.63
75	0.2	2	1085.93428	1086.31396	0.48
100	0.5	2	2525.72	2538.03238	0.96
100	0.4	2	2231.19107	2240.39203	0.93
100	0.3	2	1865.4794	1870.74601	0.86
100	0.2	2	1428.8272	1431.43413	0.62
125	0.5	2	3105.40479	3119.5597	1
125	0.4	2	2714.96471	2727.0498	0.97
125	0.3	2	2284.20376	2291.94008	0.88
125	0.2	2	1740.79801	1744.0917	0.62



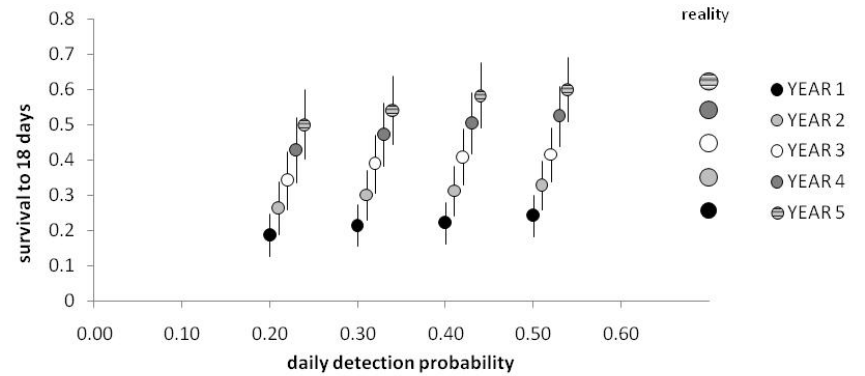
Least Tern Survival

(3 visits between day 14 & 18)

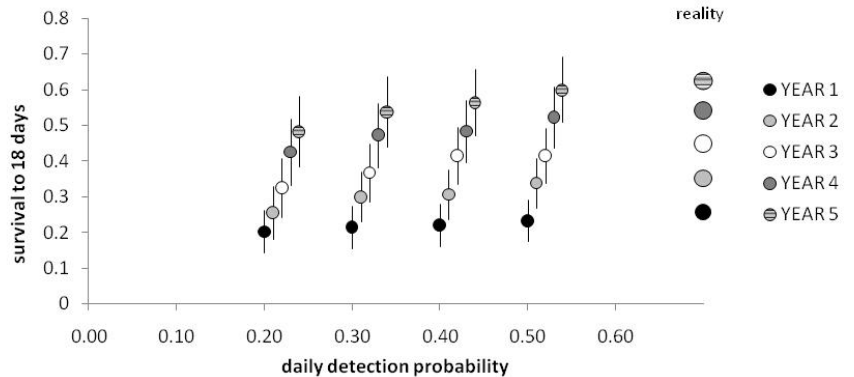
SAMPLE SIZE = 50



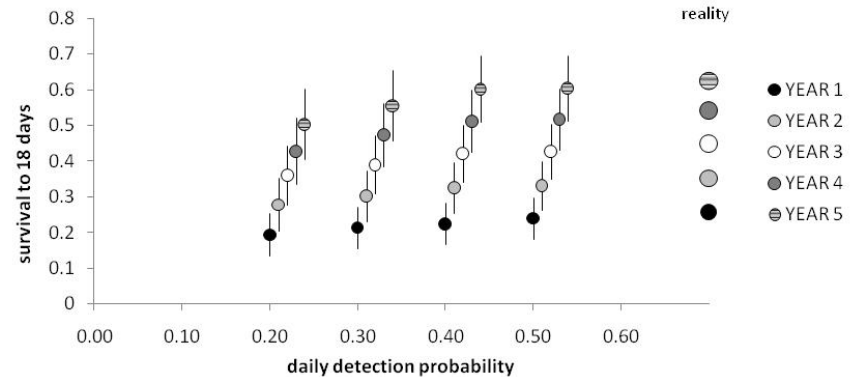
SAMPLE SIZE = 100



SAMPLE SIZE = 75



SAMPLE SIZE = 125





Least Tern Survival

(3 visits between day 14 & 18)

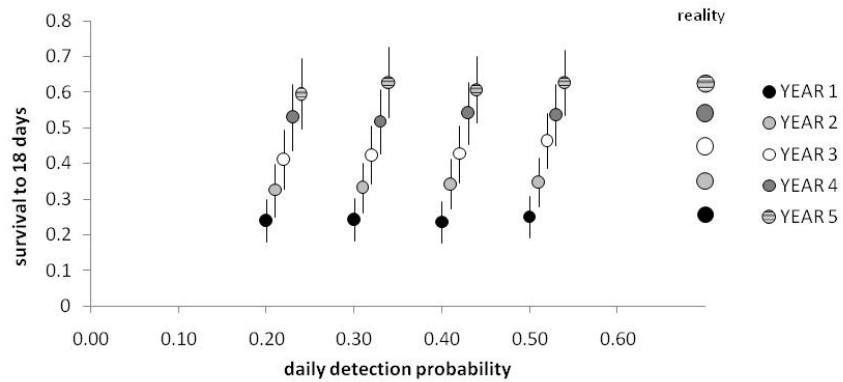
N	Detection	AIC_c (year)	AIC_c (constant)	Probability
50	0.5	1463.16042	1472.81778	0.94
50	0.4	1307.58506	1312.68592	0.77
50	0.3	1118.05583	1123.1031	0.7
50	0.2	866.8174	867.81827	0.49
75	0.5	2184.70577	2199.7703	0.97
75	0.4	1964.7519	1976.42127	0.92
75	0.3	1666.81142	1674.07981	0.85
75	0.2	1297.7679	1300.99382	0.69
100	0.5	2895.00002	2915.92089	1
100	0.4	2600.38761	2618.89388	0.98
100	0.3	2218.57264	2230.22904	0.94
100	0.2	1715.49556	1722.65352	0.92
125	0.5	3544.31736	3571.15108	1
125	0.4	3197.0076	3221.92304	0.99
125	0.3	2711.8263	2729.11079	0.97
125	0.2	2088.00433	2097.14139	0.87



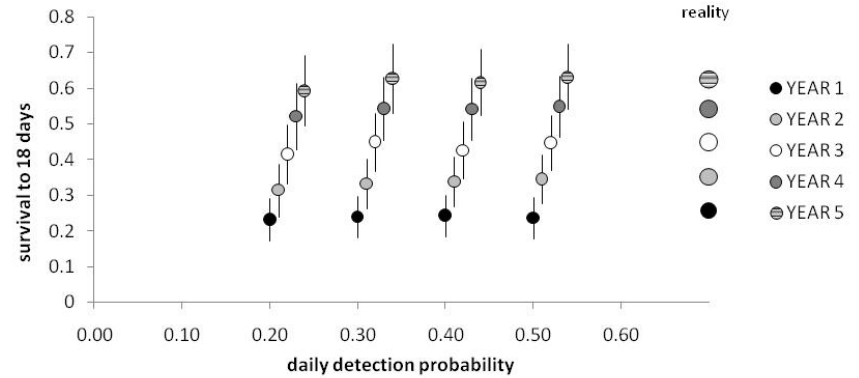
Least Tern Survival

(4 visits between day 14 & 18)

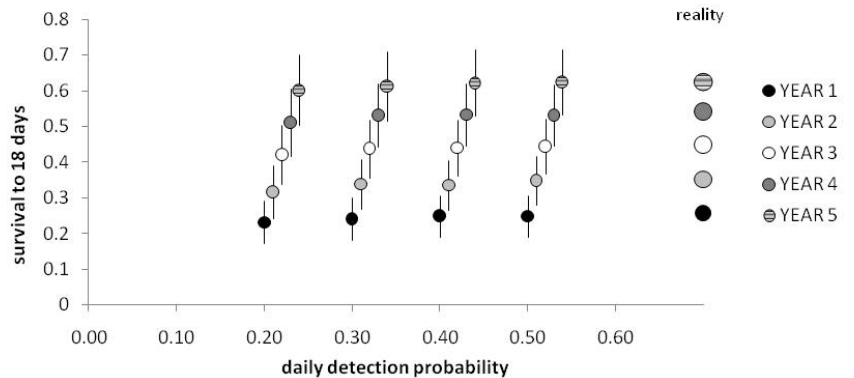
SAMPLE SIZE = 50



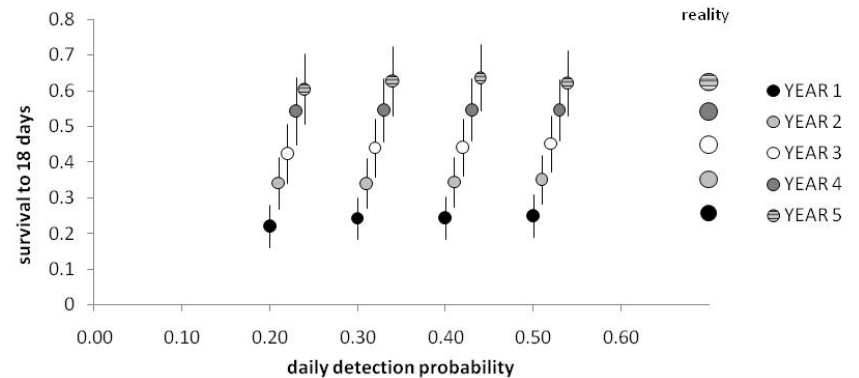
SAMPLE SIZE = 100



SAMPLE SIZE = 75



SAMPLE SIZE = 125





Least Tern Survival

(4 visits between day 14 & 18)

N	Detection	AIC_c (year)	AIC_c (constant)	Probability
50	0.5	1583.09707	1593.86196	0.95
50	0.4	1432.70707	1441.51354	0.88
50	0.3	1244.1508	1250.4887	0.81
50	0.2	983.69675	986.37699	0.67
75	0.5	2348.59061	2366.1793	1
75	0.4	2153.54333	2167.86555	0.99
75	0.3	1870.9604	1882.04609	0.94
75	0.2	1464.9367	1472.02563	0.76
100	0.5	3114.84385	3143.81419	0.99
100	0.4	2849.99475	2871.83356	1
100	0.3	2485.166	2503.56395	0.99
100	0.2	1937.29468	1947.61684	0.89
125	0.5	3834.56776	3866.68909	1
125	0.4	3515.01162	3545.25229	1
125	0.3	3034.63157	3057.04011	1
125	0.2	2379.03379	2394.79898	0.99