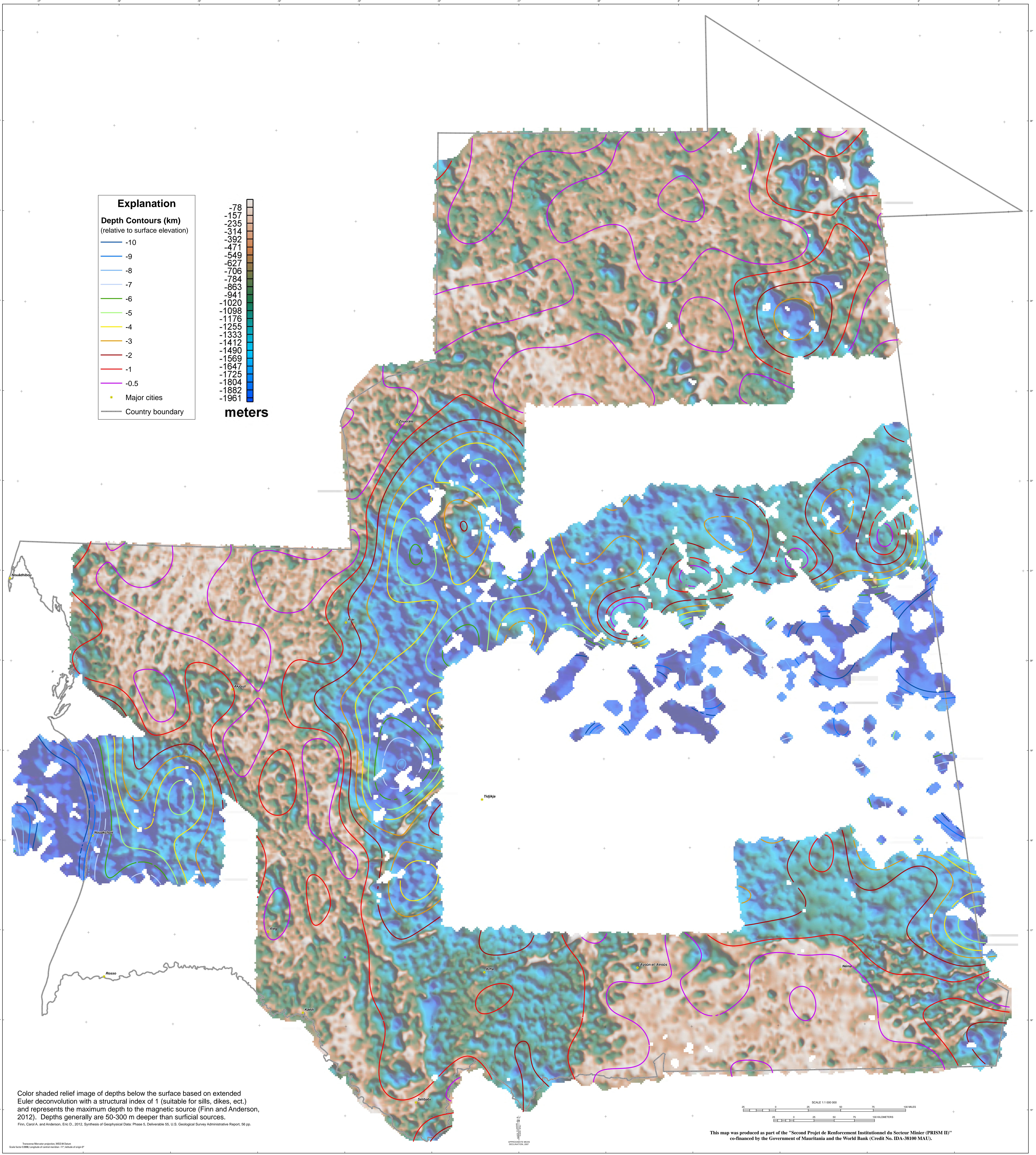


Maximum Depth to Basement Map of Mauritania Derived From Euler Analysis of Aeromagnetic Data



Explanation

Depth Contours (km)
 (relative to surface elevation)

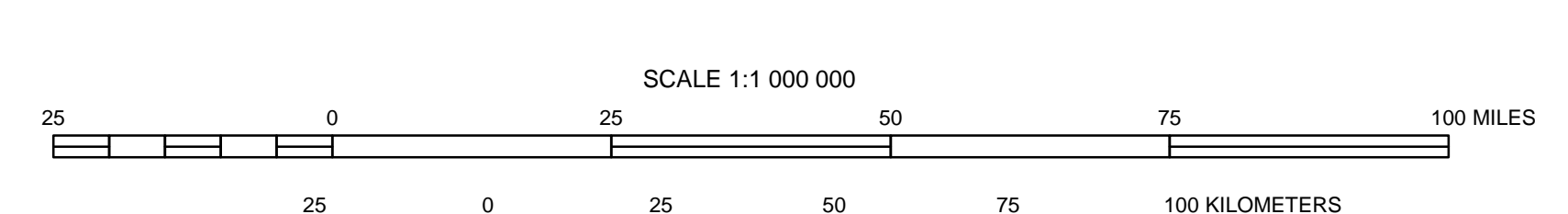
- 10
- 9
- 8
- 7
- 6
- 5
- 4
- 3
- 2
- 1
- 0.5
- Major cities
- Country boundary

- 78
- 157
- 235
- 314
- 392
- 471
- 549
- 627
- 706
- 784
- 863
- 941
- 1020
- 1098
- 1176
- 1255
- 1333
- 1412
- 1490
- 1569
- 1647
- 1725
- 1804
- 1882
- 1961

meters

Color shaded relief image of depths below the surface based on extended Euler deconvolution with a structural index of 1 (suitable for sills, dikes, ect.) and represents the maximum depth to the magnetic source (Finn and Anderson, 2012). Depths generally are 50-300 m deeper than surficial sources.

Finn, Carol A. and Anderson, Eric D., 2012, Synthesis of Geophysical Data: Phase 5, Deliverable 55, U.S. Geological Survey Administrative Report, 56 pp.



This map was produced as part of the "Second Projet de Renforcement Institutionnel du Secteur Minier (PRISM II)" co-financed by the Government of Mauritania and the World Bank (Credit No. IDA-38100 MAU).

Topographic Map of Mauritania, 1:500,000 Scale
 Scale factor 0.9996. Lengths of central meridian 117, 54.9 km of edge 117

APPROXIMATE MEAN DECLINATION 2011