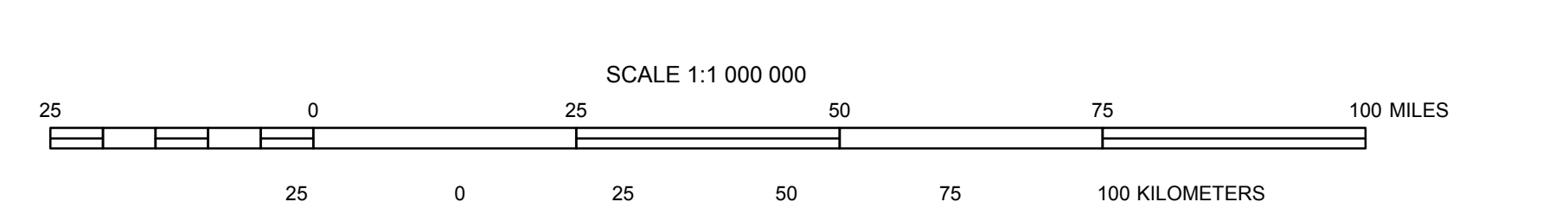
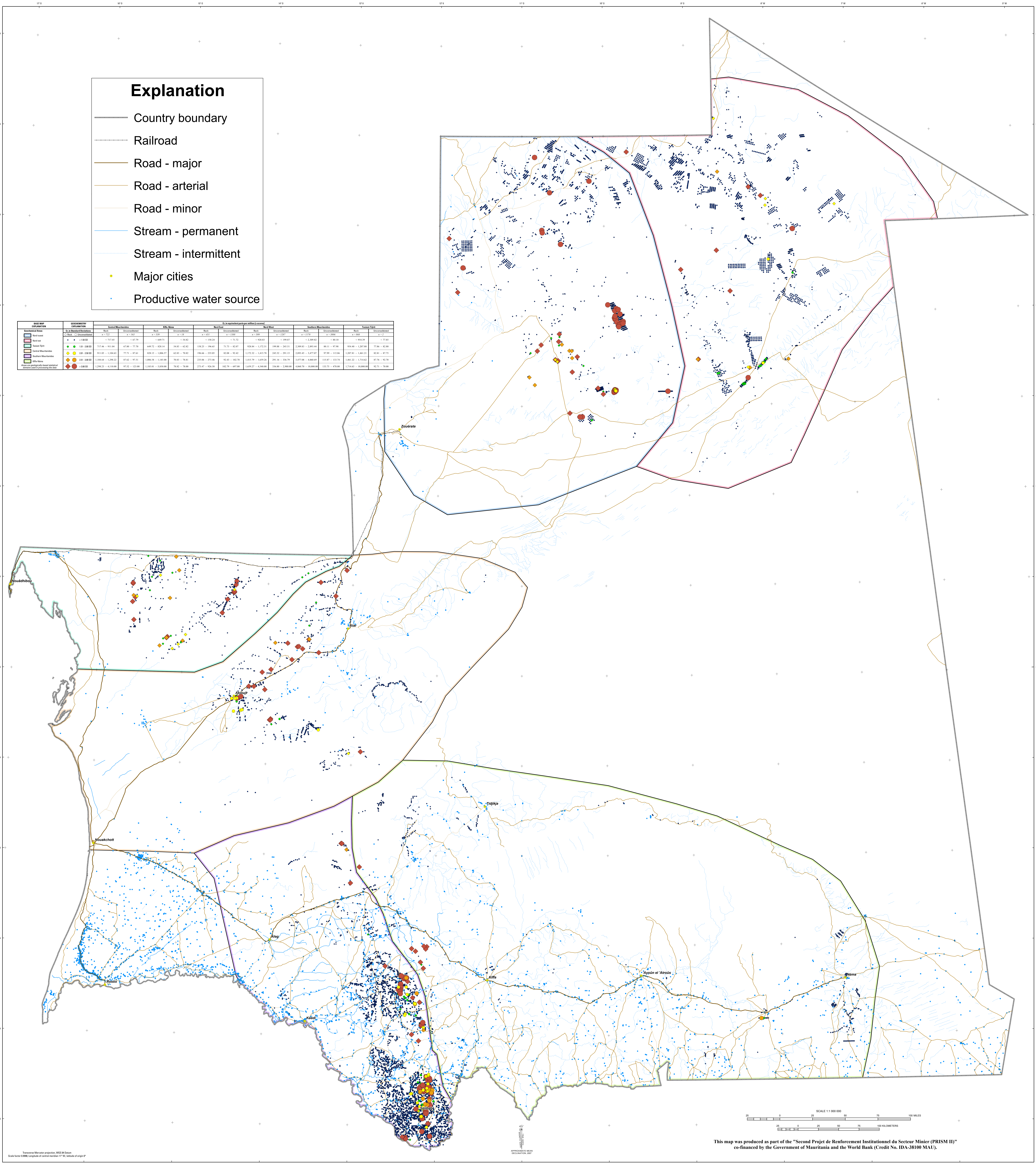


Explanation

- Country boundary
- Railroad
- Road - major
- Road - arterial
- Road - minor
- Stream - permanent
- Stream - intermittent
- Major cities
- Productive water source

Rock Name	Elevation (m)	Chromium Concentration (ppm)		Chromium Concentration (ppm)		Chromium Concentration (ppm)		Chromium Concentration (ppm)		Chromium Concentration (ppm)	
		Rock	Streambed	Rock	Streambed	Rock	Streambed	Rock	Streambed	Rock	Streambed
Basalt	100-1500	100-1500	100-1500	100-1500	100-1500	100-1500	100-1500	100-1500	100-1500	100-1500	100-1500
Granite	100-1500	100-1500	100-1500	100-1500	100-1500	100-1500	100-1500	100-1500	100-1500	100-1500	100-1500
Quartzite	100-1500	100-1500	100-1500	100-1500	100-1500	100-1500	100-1500	100-1500	100-1500	100-1500	100-1500
Schist	100-1500	100-1500	100-1500	100-1500	100-1500	100-1500	100-1500	100-1500	100-1500	100-1500	100-1500
Siltstone	100-1500	100-1500	100-1500	100-1500	100-1500	100-1500	100-1500	100-1500	100-1500	100-1500	100-1500
Sandstone	100-1500	100-1500	100-1500	100-1500	100-1500	100-1500	100-1500	100-1500	100-1500	100-1500	100-1500
Limestone	100-1500	100-1500	100-1500	100-1500	100-1500	100-1500	100-1500	100-1500	100-1500	100-1500	100-1500
Gypsum	100-1500	100-1500	100-1500	100-1500	100-1500	100-1500	100-1500	100-1500	100-1500	100-1500	100-1500
Claystone	100-1500	100-1500	100-1500	100-1500	100-1500	100-1500	100-1500	100-1500	100-1500	100-1500	100-1500
Shale	100-1500	100-1500	100-1500	100-1500	100-1500	100-1500	100-1500	100-1500	100-1500	100-1500	100-1500
Sandstone (intermediate to coarse)	100-1500	100-1500	100-1500	100-1500	100-1500	100-1500	100-1500	100-1500	100-1500	100-1500	100-1500
Sandstone (fine to medium)	100-1500	100-1500	100-1500	100-1500	100-1500	100-1500	100-1500	100-1500	100-1500	100-1500	100-1500
Siltstone (intermediate to coarse)	100-1500	100-1500	100-1500	100-1500	100-1500	100-1500	100-1500	100-1500	100-1500	100-1500	100-1500
Siltstone (fine to medium)	100-1500	100-1500	100-1500	100-1500	100-1500	100-1500	100-1500	100-1500	100-1500	100-1500	100-1500
Shale (intermediate to coarse)	100-1500	100-1500	100-1500	100-1500	100-1500	100-1500	100-1500	100-1500	100-1500	100-1500	100-1500
Shale (fine to medium)	100-1500	100-1500	100-1500	100-1500	100-1500	100-1500	100-1500	100-1500	100-1500	100-1500	100-1500



This map was produced as part of the "Second Projet de Renforcement Institutionnel du Secteur Minier (PRISM II)" co-financed by the Government of Mauritania and the World Bank (Credit No. IDA-38100 MAU).

Topographic Map of Mauritania, 1:500,000 Scale
Scale factor 0.996, Longitude of central meridian 11° W, Latitude of origin 0°