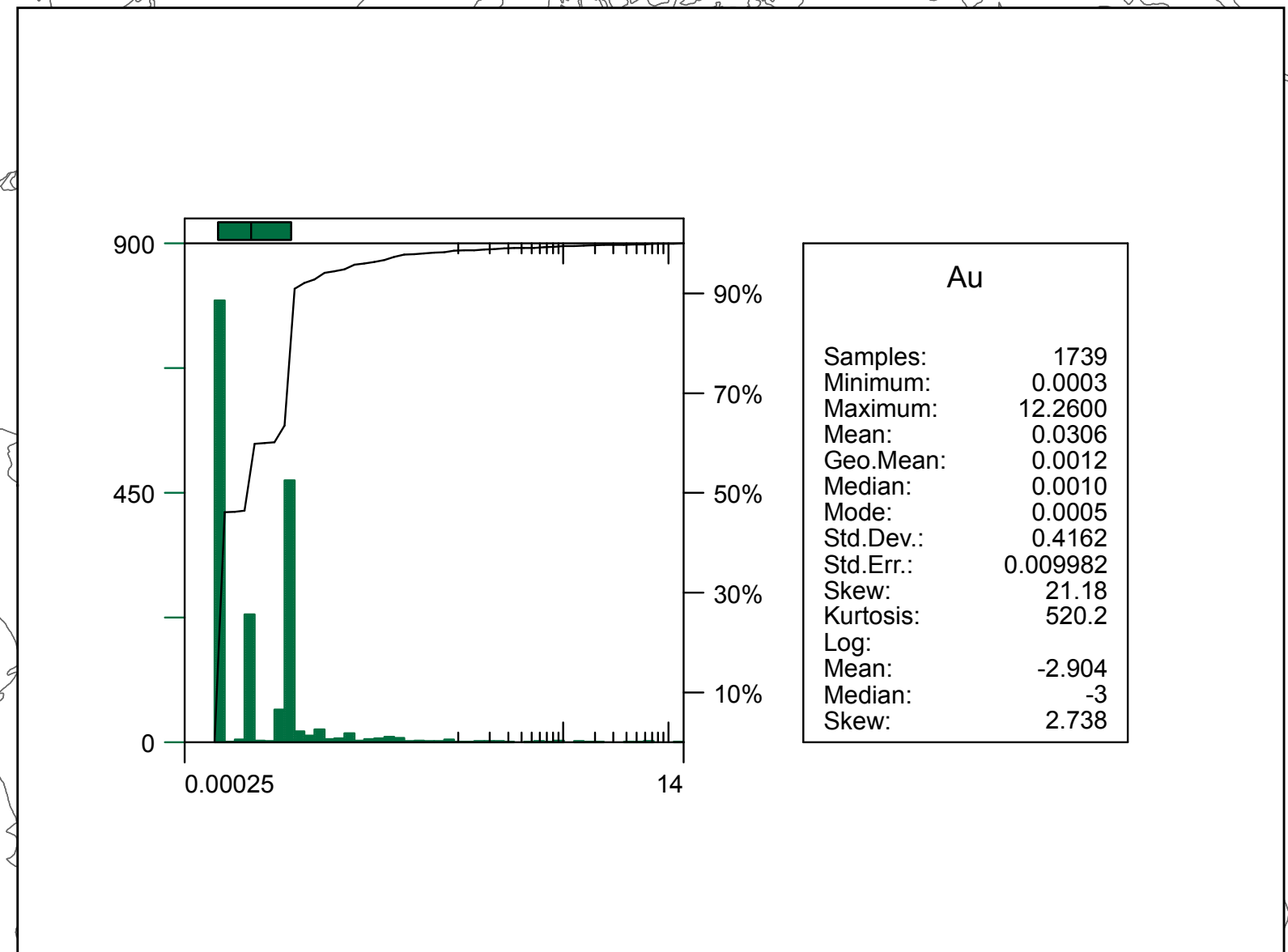
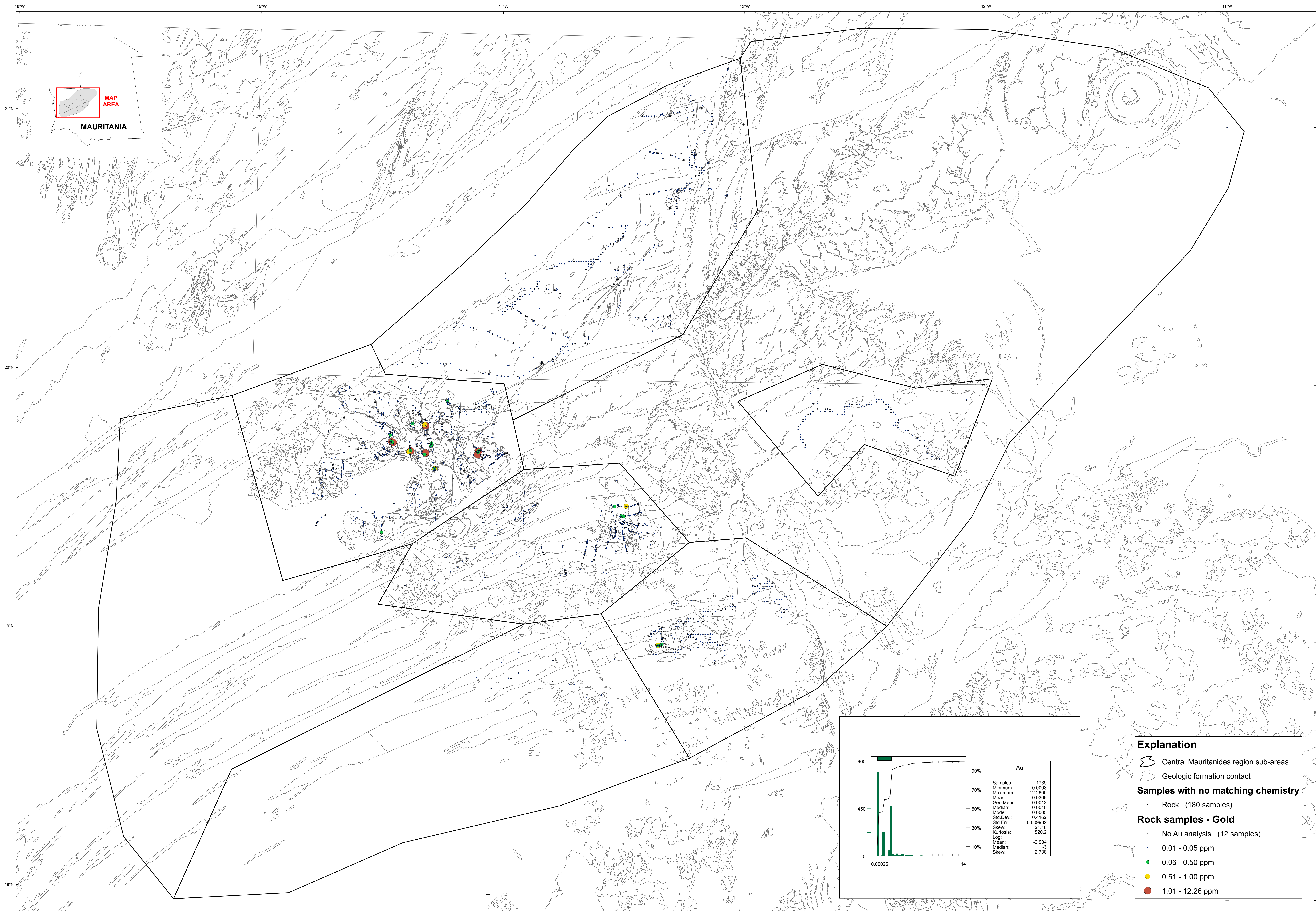


U.S. Department of the Interior
U.S. Geological Survey
By Stuart A. Giles and Robert G. Eppinger
2012

Geochemistry of Rocks in the Central Mauritanides — Gold



Explanation

- Central Mauritanides region sub-areas
- Geologic formation contact

Samples with no matching chemistry

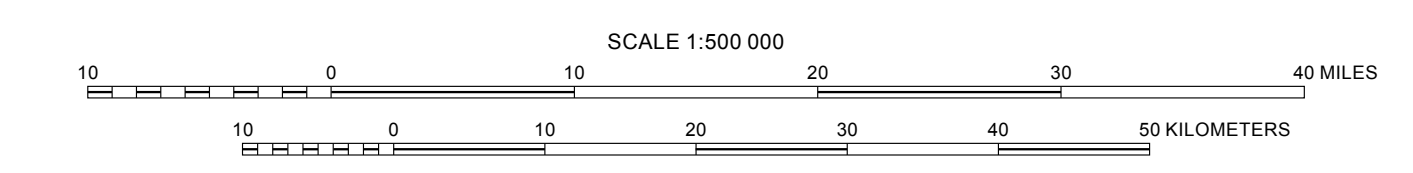
- Rock (180 samples)

Rock samples - Gold

- No Au analysis (12 samples)
- 0.01 - 0.05 ppm
- 0.06 - 0.50 ppm
- 0.51 - 1.00 ppm
- 1.01 - 12.26 ppm

Transverse Mercator projection, WGS 84 Datum
Scale factor @ 2000: Longitude of central meridian 11° W, latitude of origin 0°

APPROXIMATE MEAN
DECLINATION, 2007



This map was produced as part of the "Second Projet de Renforcement Institutionnel du Secteur Minier (PRISM II)" co-financed by the Government of Mauritania and the World Bank (Credit No. IDA-38100 MAU).