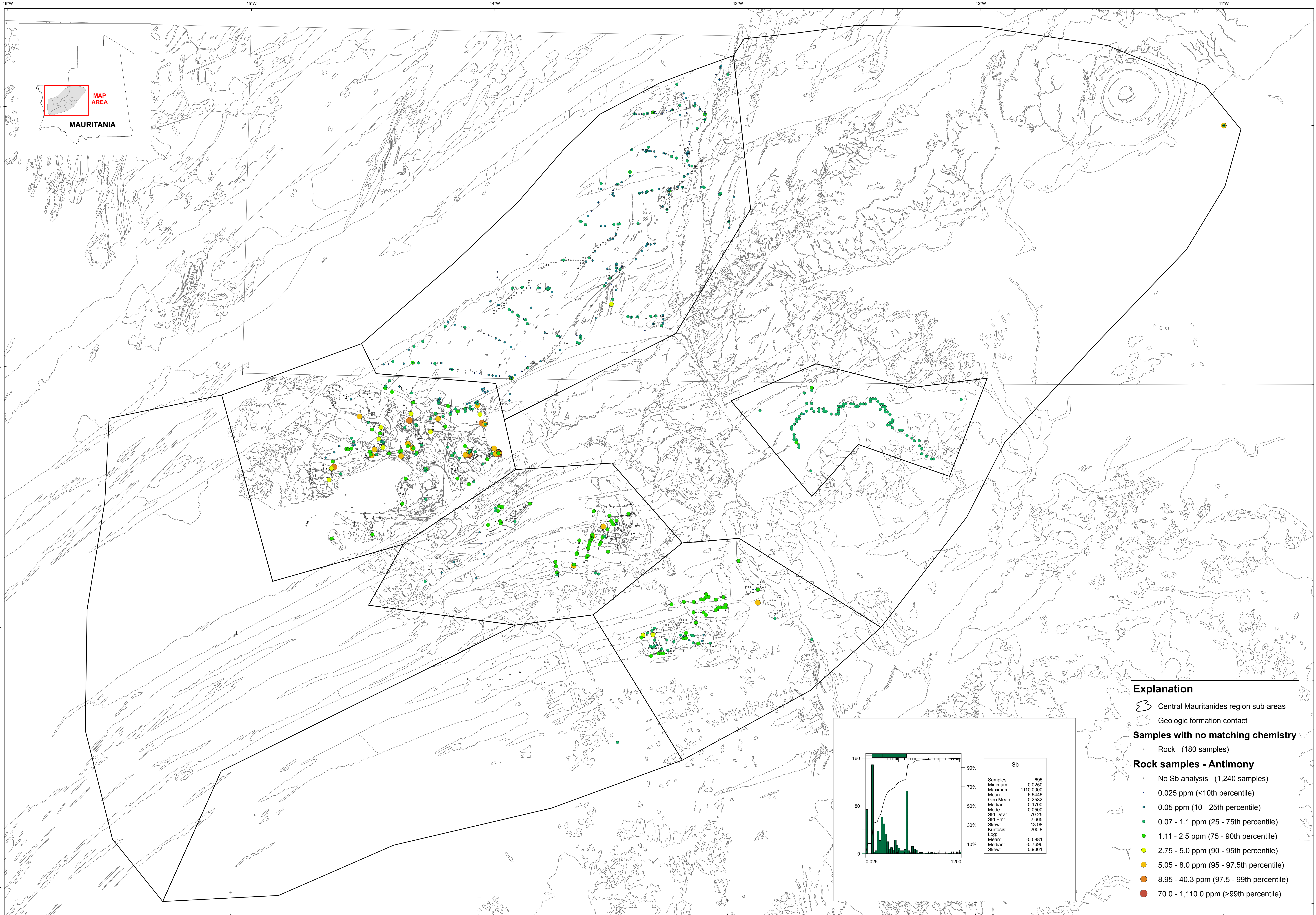


U.S. Department of the Interior
U.S. Geological Survey
By Stuart A. Giles and Robert G. Eppinger

Geochemistry of Rocks in the Central Mauritanides — Antimony

2012



Explanation

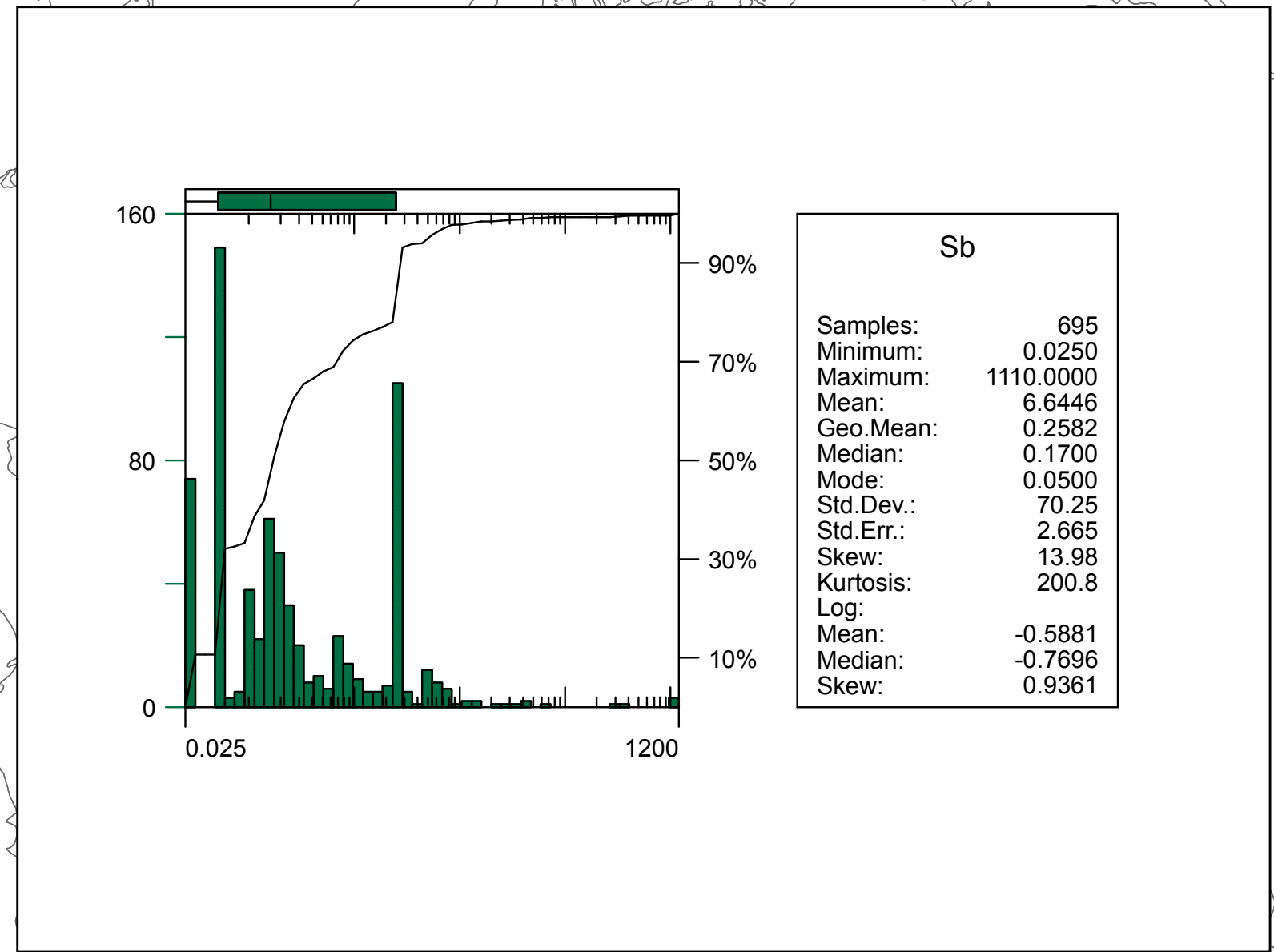
- Central Mauritanides region sub-areas
- Geologic formation contact

Samples with no matching chemistry

- Rock (180 samples)

Rock samples - Antimony

- No Sb analysis (1,240 samples)
- 0.025 ppm (<10th percentile)
- 0.05 ppm (10 - 25th percentile)
- 0.07 - 1.1 ppm (25 - 75th percentile)
- 1.11 - 2.5 ppm (75 - 90th percentile)
- 2.75 - 5.0 ppm (90 - 95th percentile)
- 5.05 - 8.0 ppm (95 - 97.5th percentile)
- 8.95 - 40.3 ppm (97.5 - 99th percentile)
- 70.0 - 1,110.0 ppm (>99th percentile)



Transverse Mercator projection, WGS 84 Datum
Scale factor @ 0000: Longitude of central meridian 11° W, latitude of origin 0°

APPROXIMATE MEAN
DECLINATION, 2007

SCALE 1:500,000
0 10 20 30 40 50 KILOMETERS
0 10 20 30 40 50 MILES

This map was produced as part of the "Second Projet de Renforcement Institutionnel du Secteur Minier (PRISM II)" co-financed by the Government of Mauritania and the World Bank (Credit No. IDA-38100 MAU).