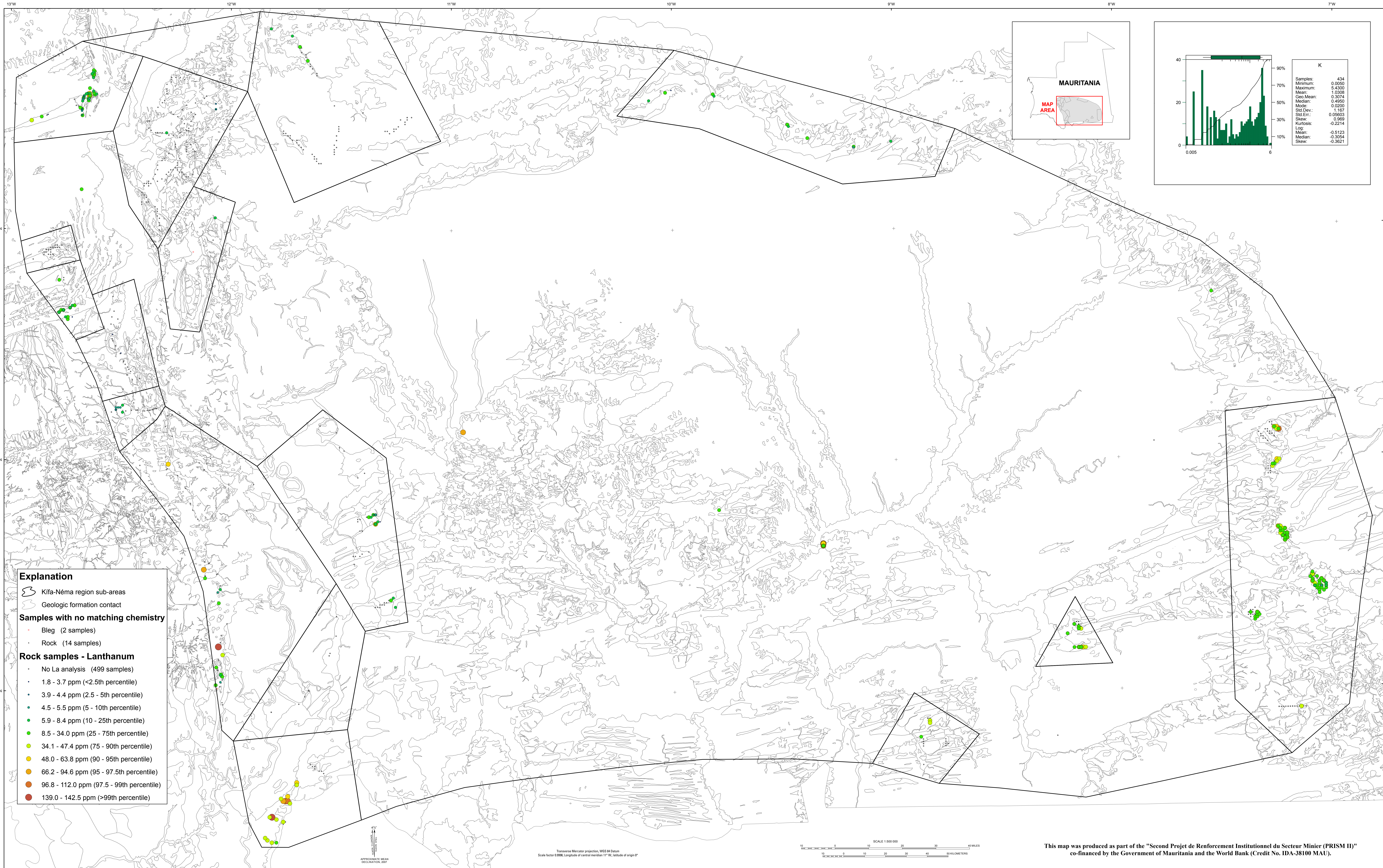


Geochemistry of Rocks in the Kiffa-Néma Area — Lanthanum



**Explanation**

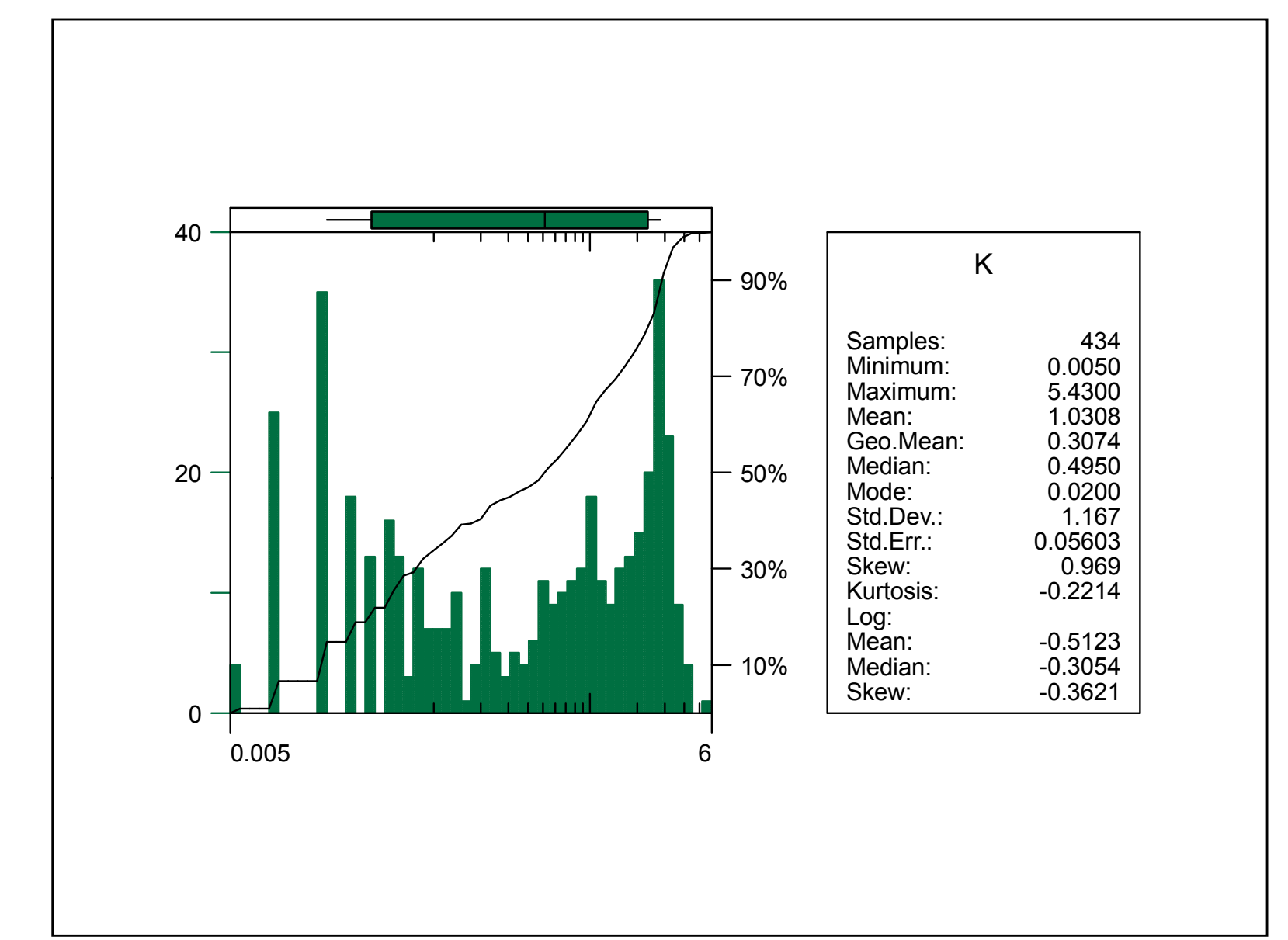
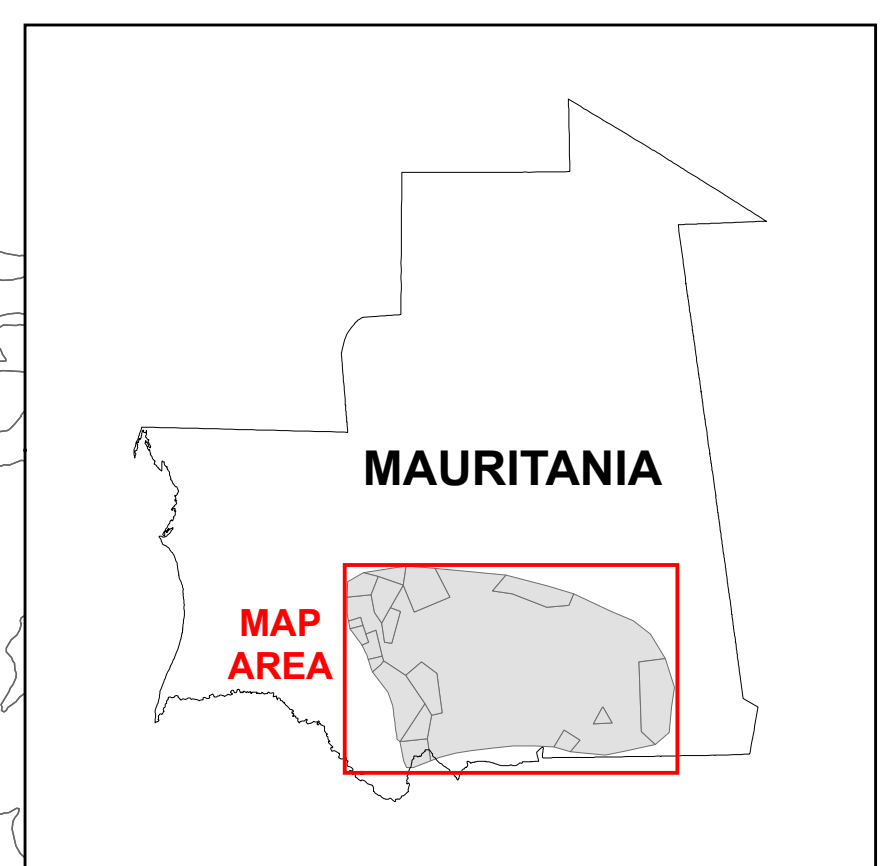
- Kiffa-Néma region sub-areas
- Geologic formation contact

**Samples with no matching chemistry**

- Bleg (2 samples)
- Rock (14 samples)

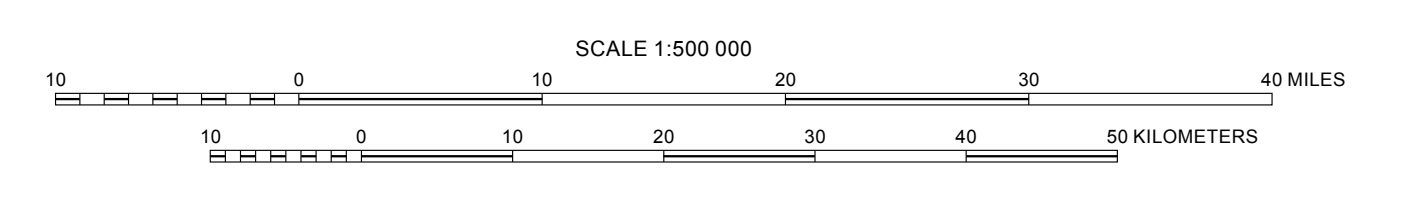
**Rock samples - Lanthanum**

- No La analysis (499 samples)
- 1.8 - 3.7 ppm (<2.5th percentile)
- 3.9 - 4.4 ppm (2.5 - 5th percentile)
- 4.5 - 5.5 ppm (5 - 10th percentile)
- 5.9 - 8.4 ppm (10 - 25th percentile)
- 8.5 - 34.0 ppm (25 - 75th percentile)
- 34.1 - 47.4 ppm (75 - 90th percentile)
- 48.0 - 63.8 ppm (90 - 95th percentile)
- 66.2 - 94.6 ppm (95 - 97.5th percentile)
- 96.8 - 112.0 ppm (97.5 - 99th percentile)
- 139.0 - 142.5 ppm (>99th percentile)



APPROXIMATE MEAN DECLINATION, 2007

Transverse Mercator projection, WGS 84 Datum  
Scale factor 0.9996; Longitude of central meridian 11°W; latitude of origin 0°



This map was produced as part of the "Second Projet de Renforcement Institutionnel du Secteur Minier (PRISM II)" co-financed by the Government of Mauritania and the World Bank (Credit No. IDA-38100 MAU).