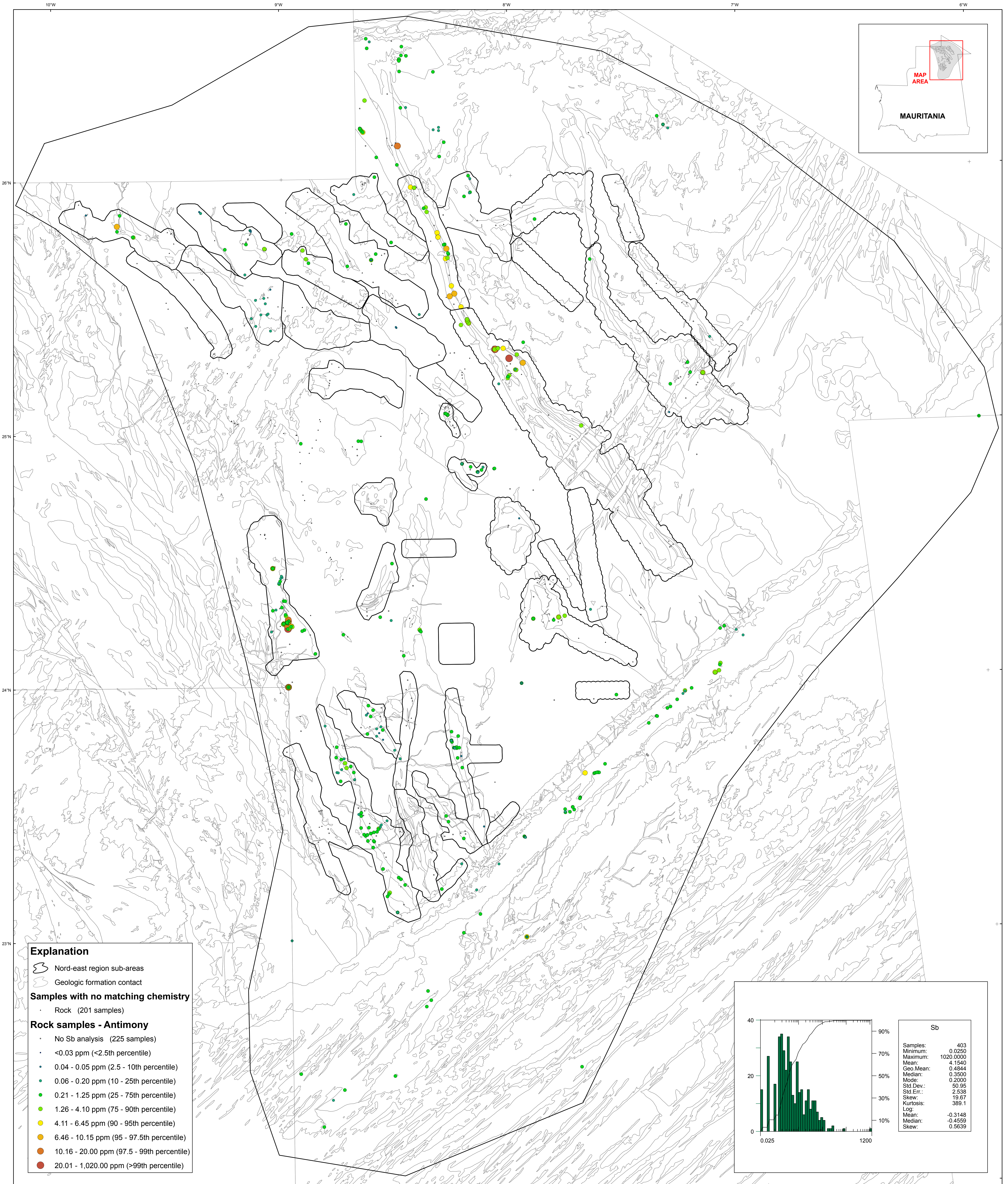


Geochemistry of Rocks in the Nord-East Area — Antimony



Explanation

- Nord-east region sub-areas
- Geologic formation contact

Samples with no matching chemistry

- Rock (201 samples)

Rock samples - Antimony

- No Sb analysis (225 samples)
- <0.03 ppm (<2.5th percentile)
- 0.04 - 0.05 ppm (2.5 - 10th percentile)
- 0.06 - 0.20 ppm (10 - 25th percentile)
- 0.21 - 1.25 ppm (25 - 75th percentile)
- 1.26 - 4.10 ppm (75 - 90th percentile)
- 4.11 - 6.45 ppm (90 - 95th percentile)
- 6.46 - 10.15 ppm (95 - 97.5th percentile)
- 10.16 - 20.00 ppm (97.5 - 99th percentile)
- 20.01 - 1,020.00 ppm (>99th percentile)

