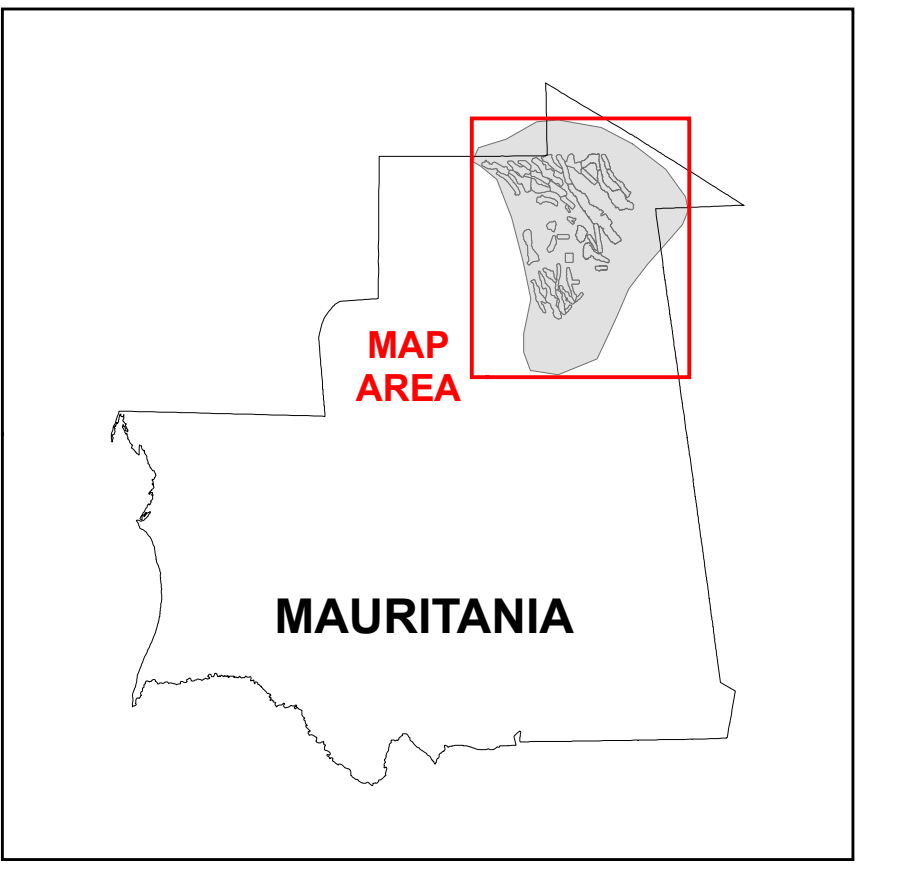
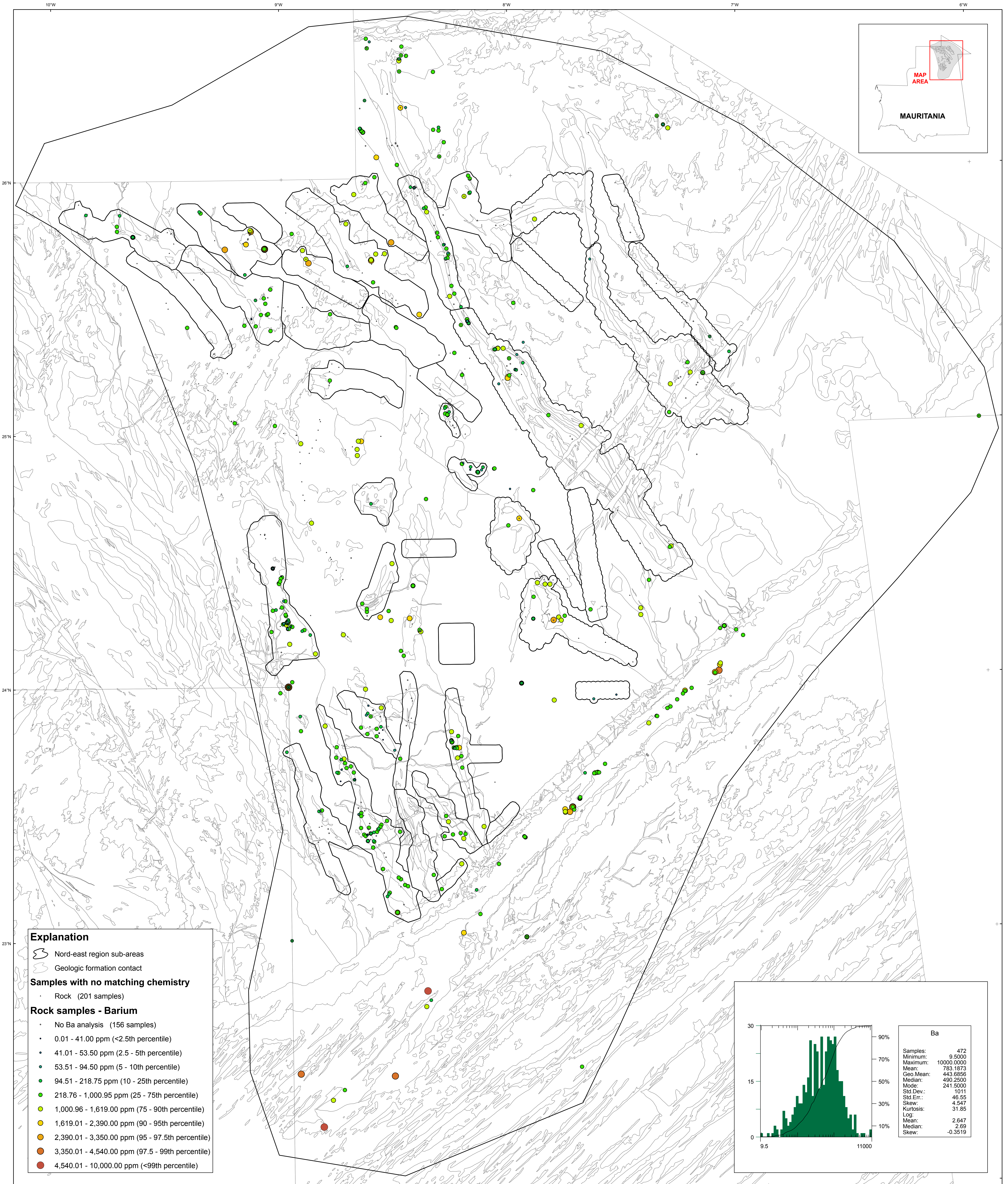


U.S. Department of the Interior
U.S. Geological Survey
By Stuart A. Giles and Robert G. Eppinger
2012

Geochemistry of Rocks in the Nord-East Area — Barium



Explanation

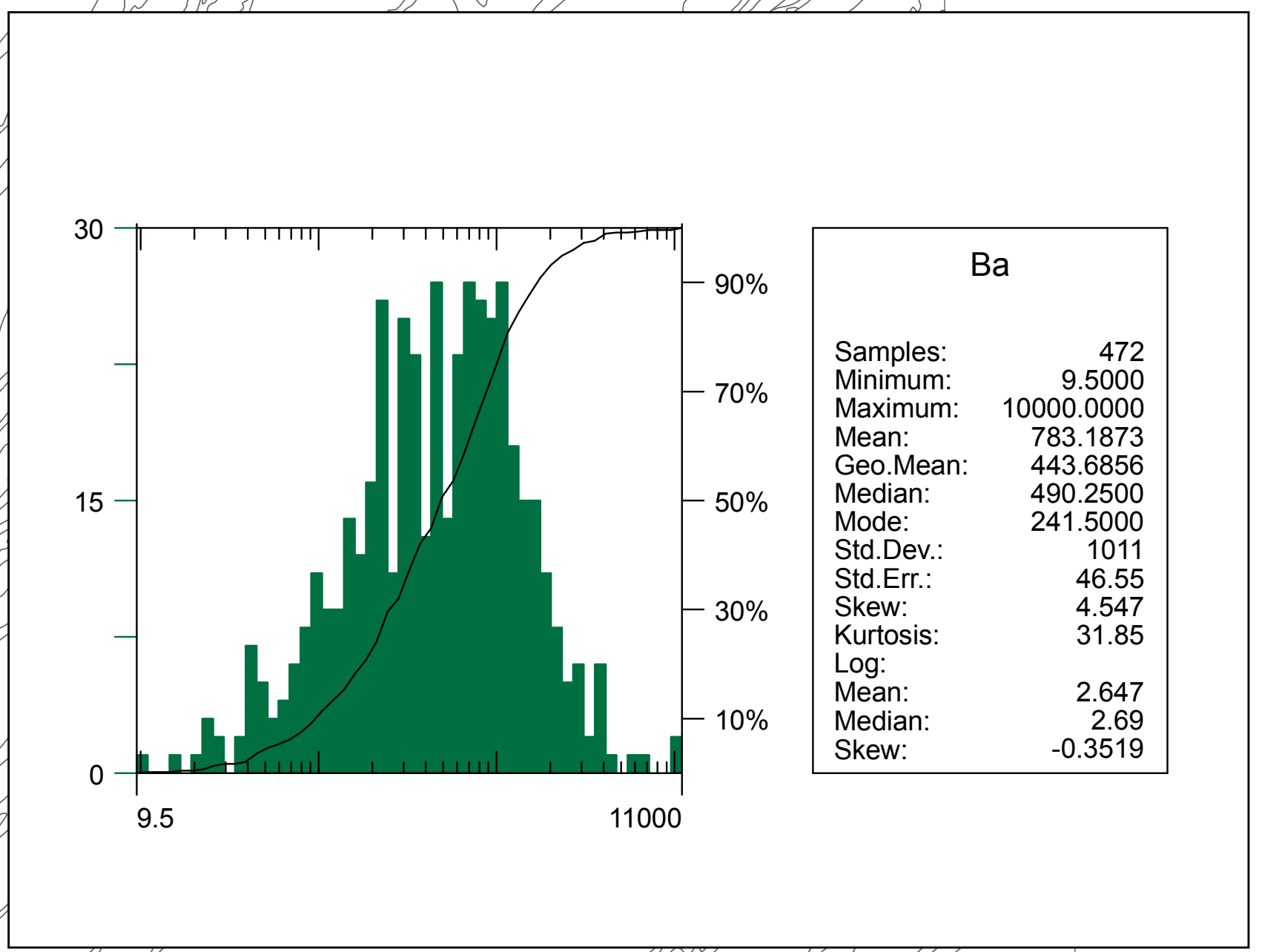
- Nord-east region sub-areas
- Geologic formation contact

Samples with no matching chemistry

- Rock (201 samples)

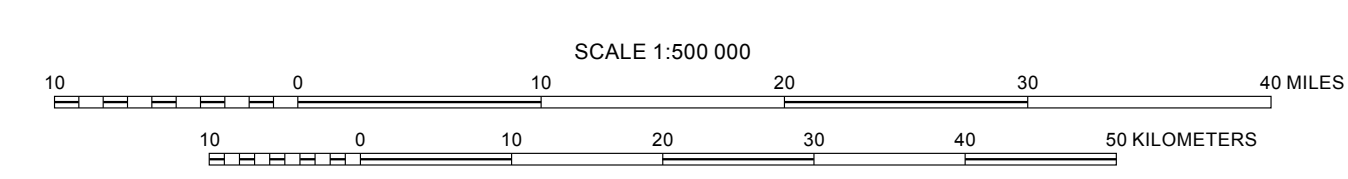
Rock samples - Barium

- No Ba analysis (156 samples)
- 0.01 - 41.00 ppm (<2.5th percentile)
- 41.01 - 53.50 ppm (2.5 - 5th percentile)
- 53.51 - 94.50 ppm (5 - 10th percentile)
- 94.51 - 218.75 ppm (10 - 25th percentile)
- 218.76 - 1,000.95 ppm (25 - 75th percentile)
- 1,000.96 - 1,619.00 ppm (75 - 90th percentile)
- 1,619.01 - 2,390.00 ppm (90 - 95th percentile)
- 2,390.01 - 3,350.00 ppm (95 - 97.5th percentile)
- 3,350.01 - 4,540.00 ppm (97.5 - 99th percentile)
- 4,540.01 - 10,000.00 ppm (<99th percentile)



Transverse Mercator projection, WGS 84 Datum
Scale factor @ 0°N: Longitude of central meridian 11°W, latitude of origin 0°

APPROXIMATE MEAN DECLINATION, 2007



This map was produced as part of the "Second Projet de Renforcement Institutionnel du Secteur Minier (PRISM II)" co-financed by the Government of Mauritania and the World Bank (Credit No. IDA-38100 MAU).