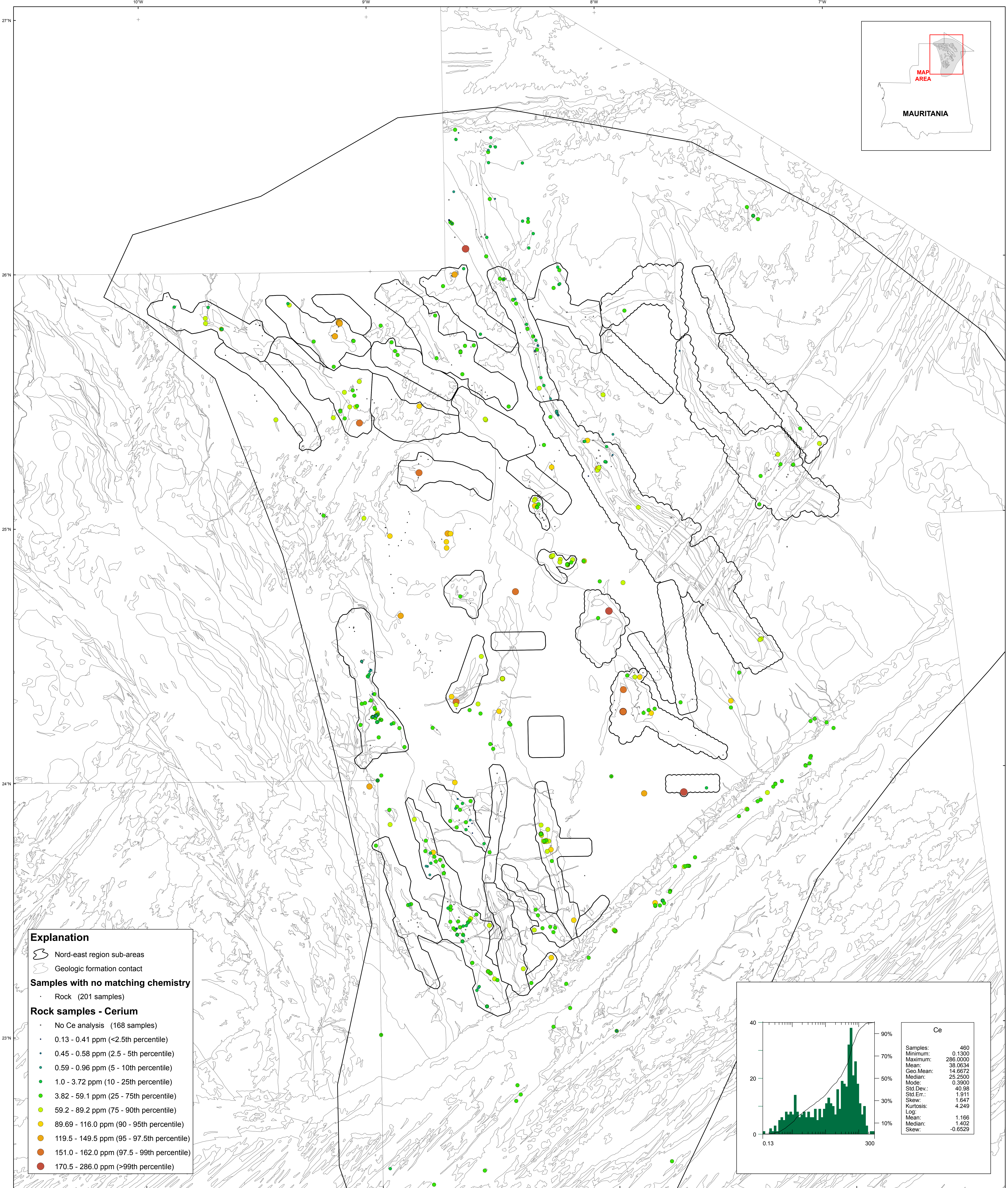
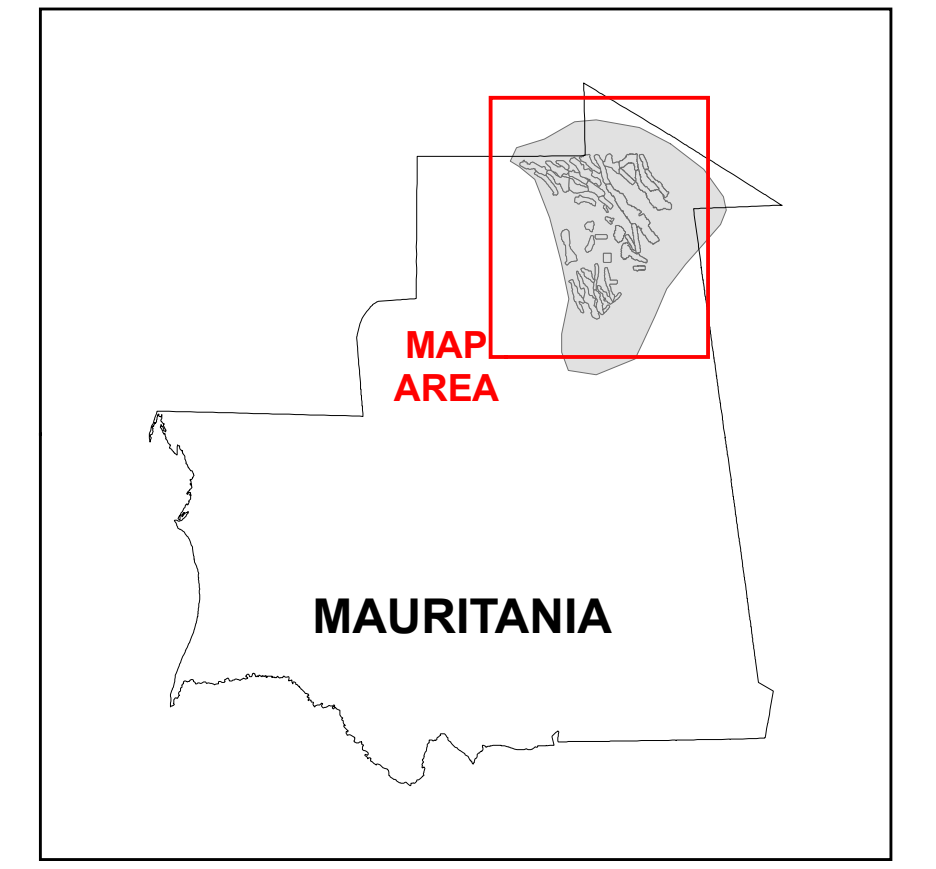


U.S. Department of the Interior  
U.S. Geological Survey  
By Stuart A. Giles and Robert G. Eppinger  
2012

### Geochemistry of Rocks in the Nord-East Area — Cerium



**Explanation**

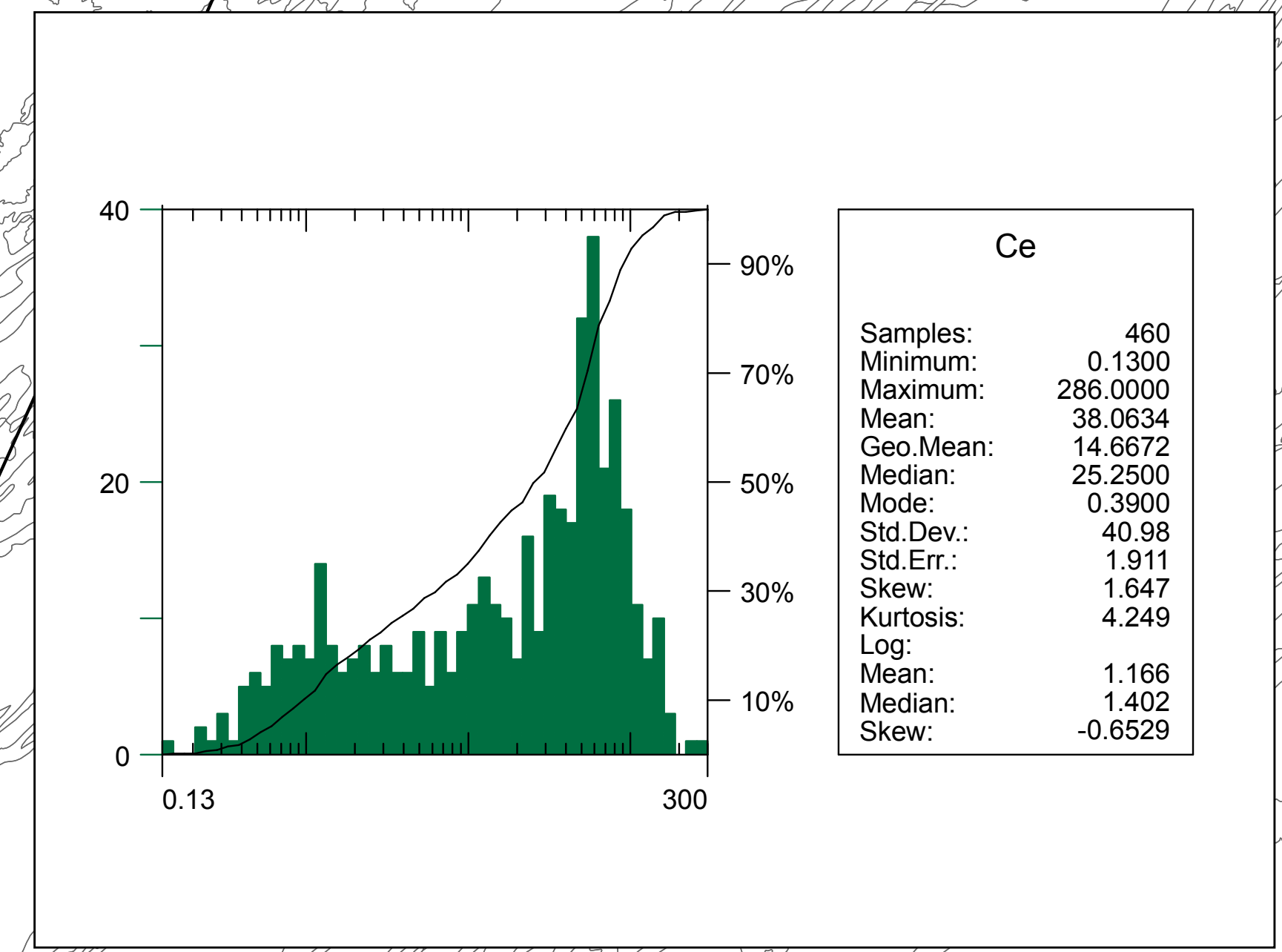
- Nord-east region sub-areas
- Geologic formation contact

**Samples with no matching chemistry**

- Rock (201 samples)

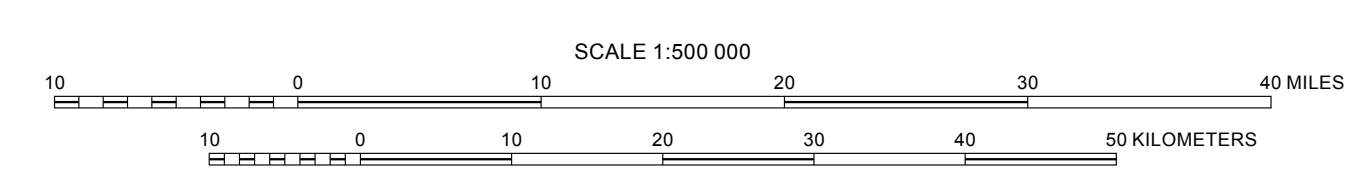
**Rock samples - Cerium**

- No Ce analysis (168 samples)
- 0.13 - 0.41 ppm (<2.5th percentile)
- 0.45 - 0.58 ppm (2.5 - 5th percentile)
- 0.59 - 0.96 ppm (5 - 10th percentile)
- 1.0 - 3.72 ppm (10 - 25th percentile)
- 3.82 - 59.1 ppm (25 - 75th percentile)
- 59.2 - 89.2 ppm (75 - 90th percentile)
- 89.69 - 116.0 ppm (90 - 95th percentile)
- 119.5 - 149.5 ppm (95 - 97.5th percentile)
- 151.0 - 162.0 ppm (97.5 - 99th percentile)
- 170.5 - 286.0 ppm (>99th percentile)



Transverse Mercator projection, WGS 84 Datum  
Scale factor 0.9996, Longitude of central meridian 11° W, latitude of origin 0°

APPROXIMATE MEAN DECLINATION, 2007



This map was produced as part of the "Second Projet de Renforcement Institutionnel du Secteur Minier (PRISM II)" co-financed by the Government of Mauritania and the World Bank (Credit No. IDA-38100 MAU).