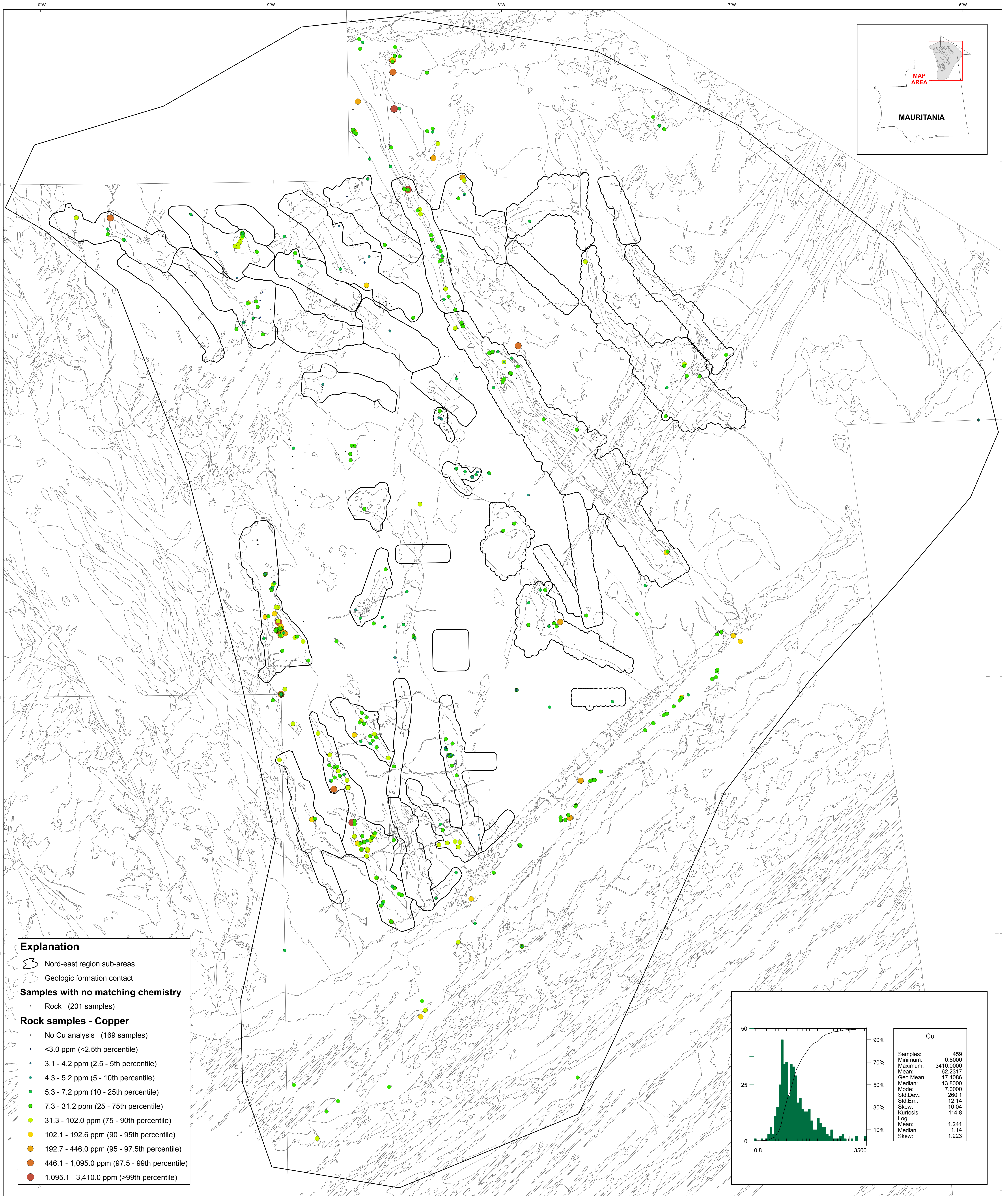


U.S. Department of the Interior  
U.S. Geological Survey  
By Stuart A. Giles and Robert G. Eppinger  
2012

**Geochemistry of Rocks in the Nord-East Area — Copper**



Transverse Mercator projection, WGS 84 Datum  
Scale factor @000: Longitude of central meridian 11°W, latitude of origin 0°  
APPROXIMATE MEAN DECLINATION, 2007

SCALE 1:500,000  
0 10 20 30 40 MILES  
0 10 20 30 40 50 KILOMETERS

This map was produced as part of the "Second Projet de Renforcement Institutionnel du Secteur Minier (PRISM II)" co-financed by the Government of Mauritania and the World Bank (Credit No. IDA-38100 MAU).