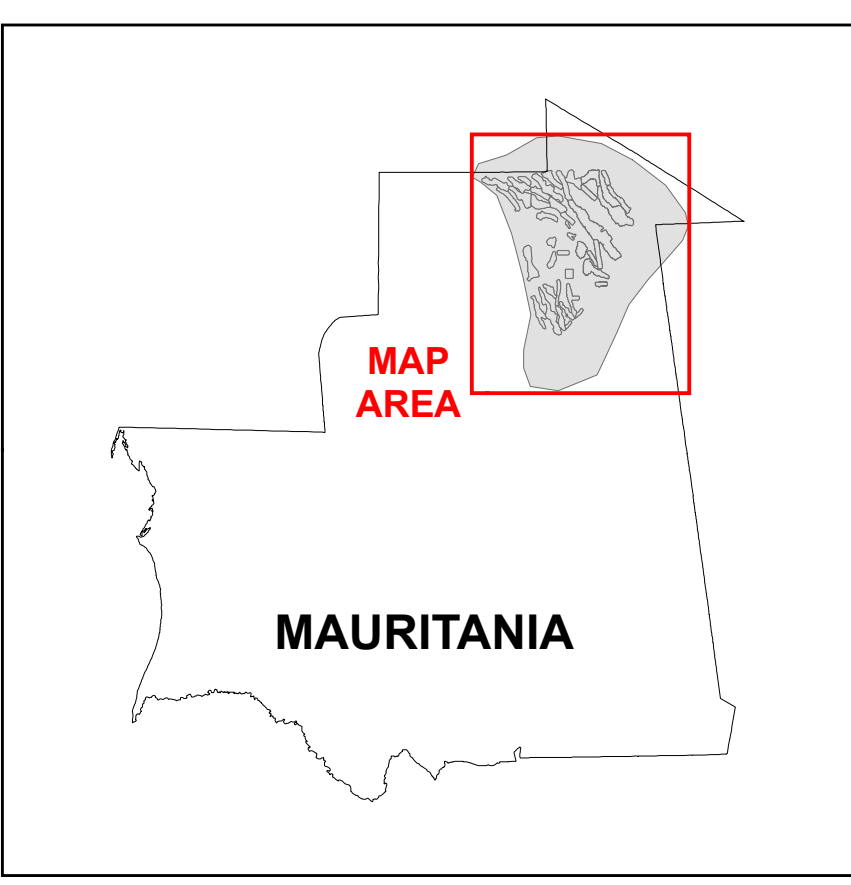
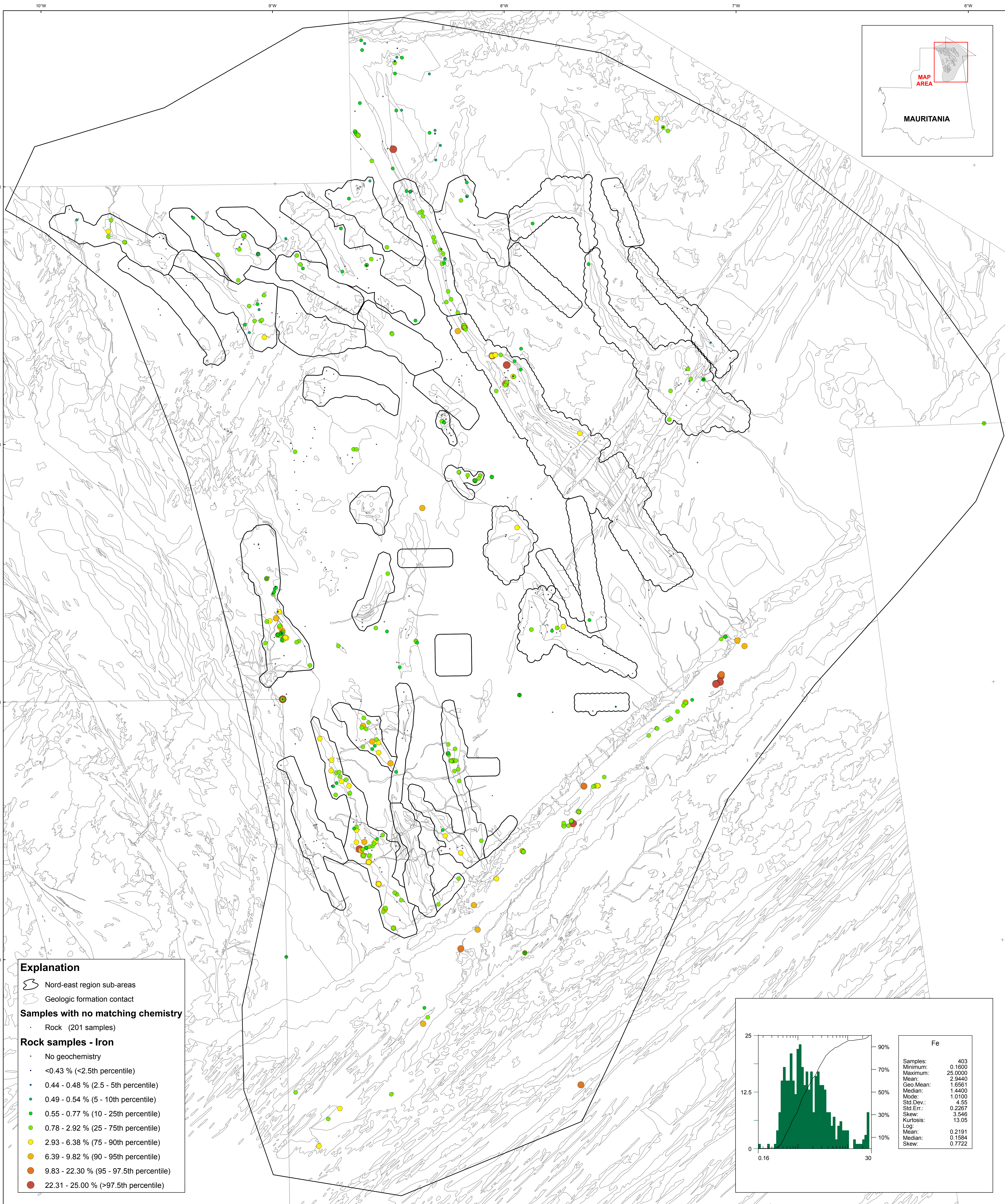


U.S. Department of the Interior
U.S. Geological Survey
By Stuart A. Giles and Robert G. Eppinger
2012

Geochemistry of Rocks in the Nord-East Area — Iron



Explanation

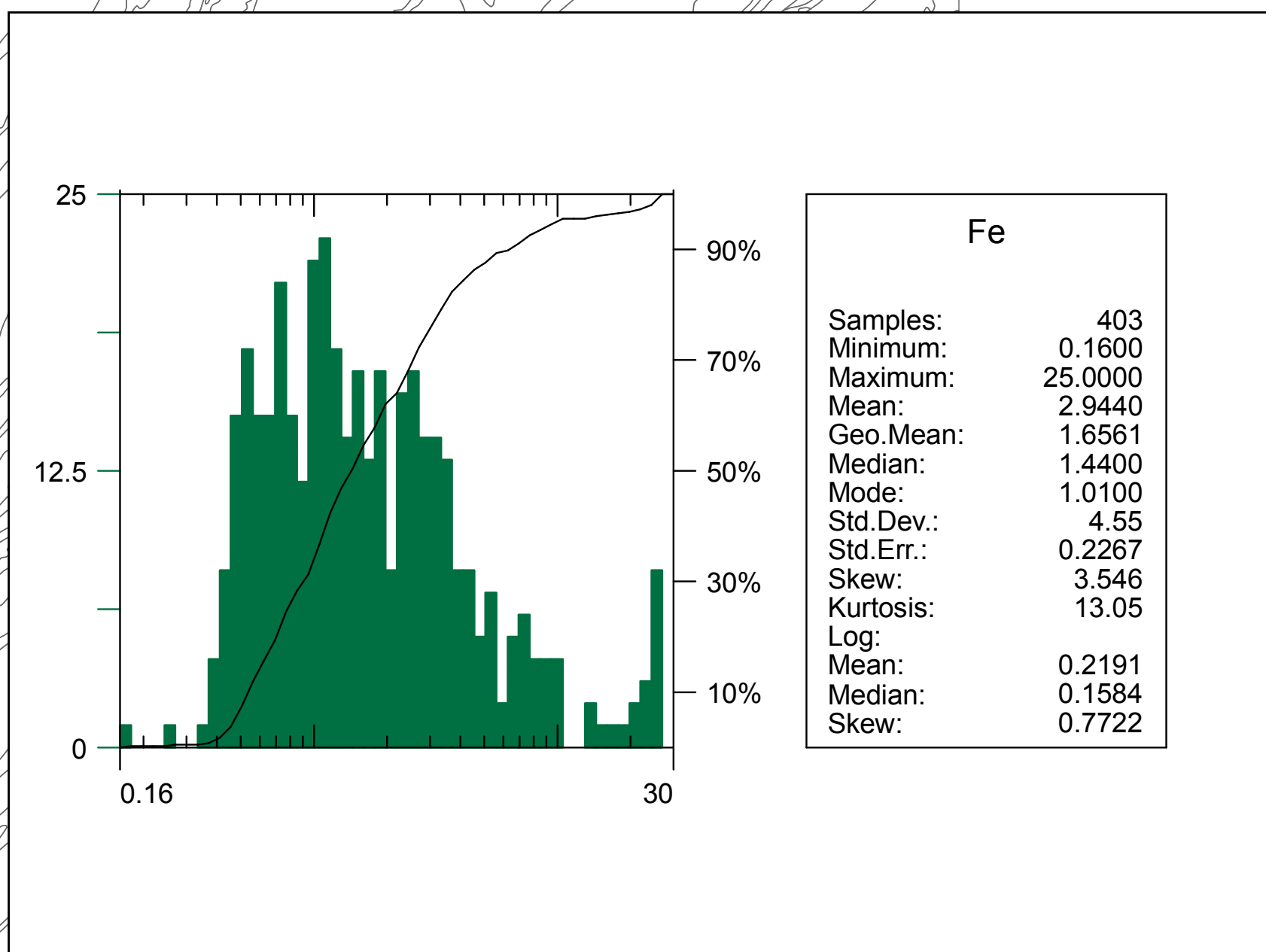
- Nord-east region sub-areas
- Geologic formation contact

Samples with no matching chemistry

- Rock (201 samples)

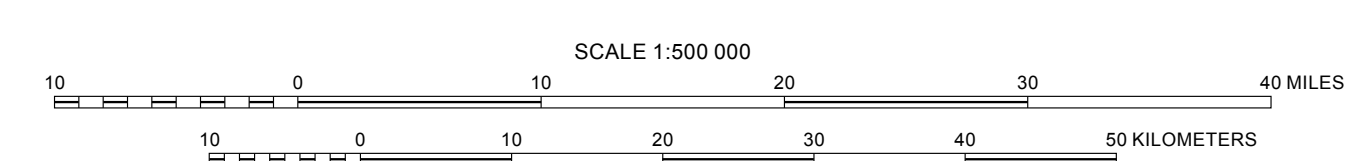
Rock samples - Iron

- No geochemistry
- <0.43 % (<2.5th percentile)
- 0.44 - 0.48 % (2.5 - 5th percentile)
- 0.49 - 0.54 % (5 - 10th percentile)
- 0.55 - 0.77 % (10 - 25th percentile)
- 0.78 - 2.92 % (25 - 75th percentile)
- 2.93 - 6.38 % (75 - 90th percentile)
- 6.39 - 9.82 % (90 - 95th percentile)
- 9.83 - 22.30 % (95 - 97.5th percentile)
- 22.31 - 25.00 % (>97.5th percentile)



Transverse Mercator projection, WGS 84 Datum
Scale factor 0.9996, Longitude of central meridian 11°W, latitude of origin 0°

APPROXIMATE MEAN DECLINATION, 2007



This map was produced as part of the "Second Projet de Renforcement Institutionnel du Secteur Minier (PRISM II)" co-financed by the Government of Mauritania and the World Bank (Credit No. IDA-38100 MAU).