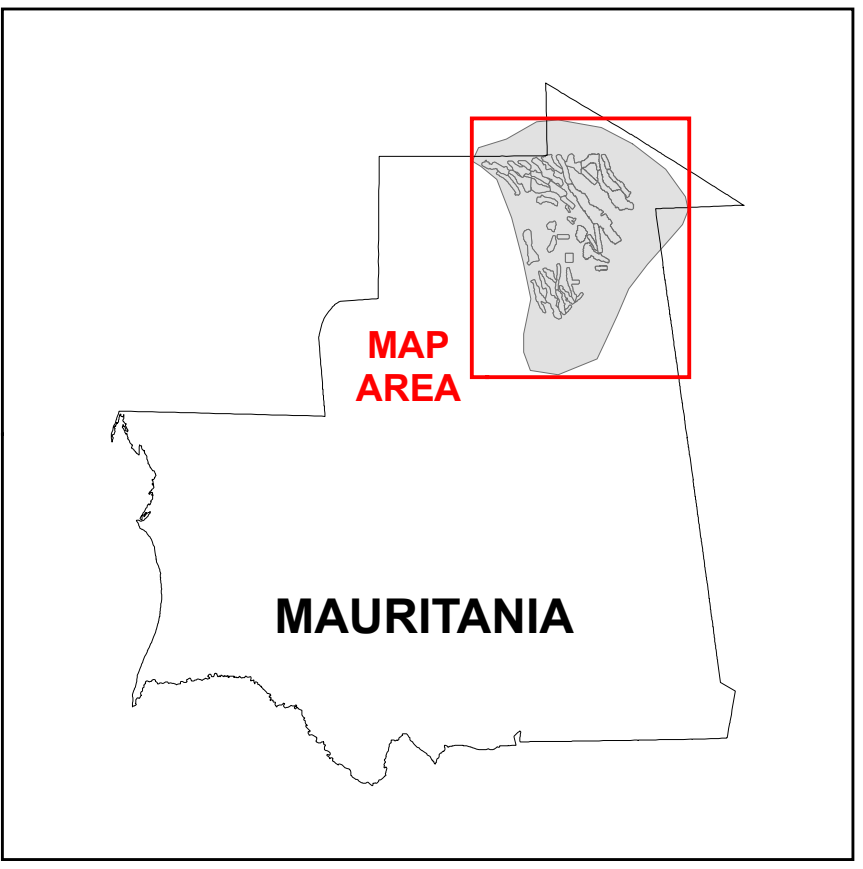
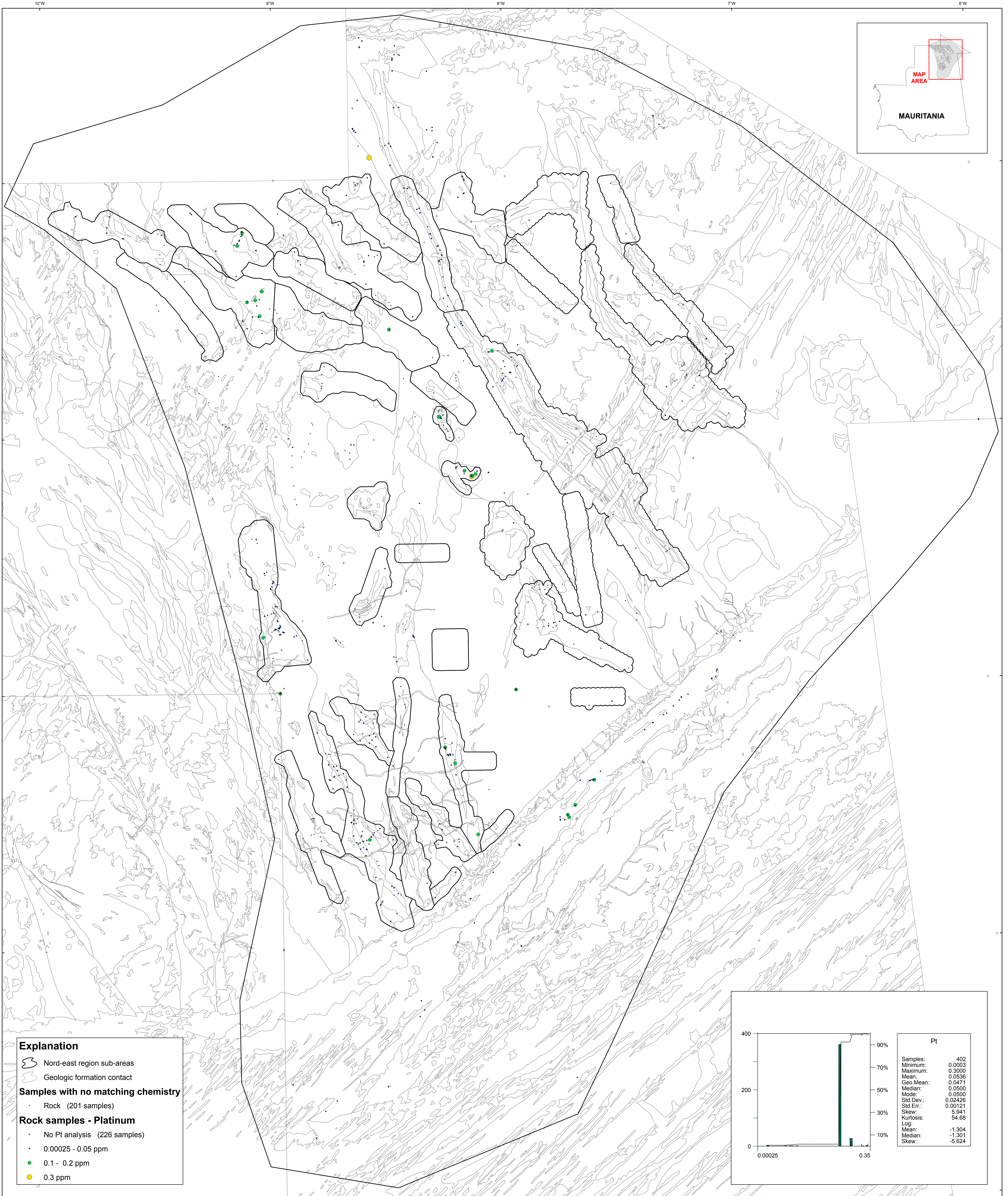


U.S. Department of the Interior
U.S. Geological Survey
By Stuart A. Giles and Robert G. Eppinger
2012

Geochemistry of Rocks in the Nord-East Area — Platinum



Explanation

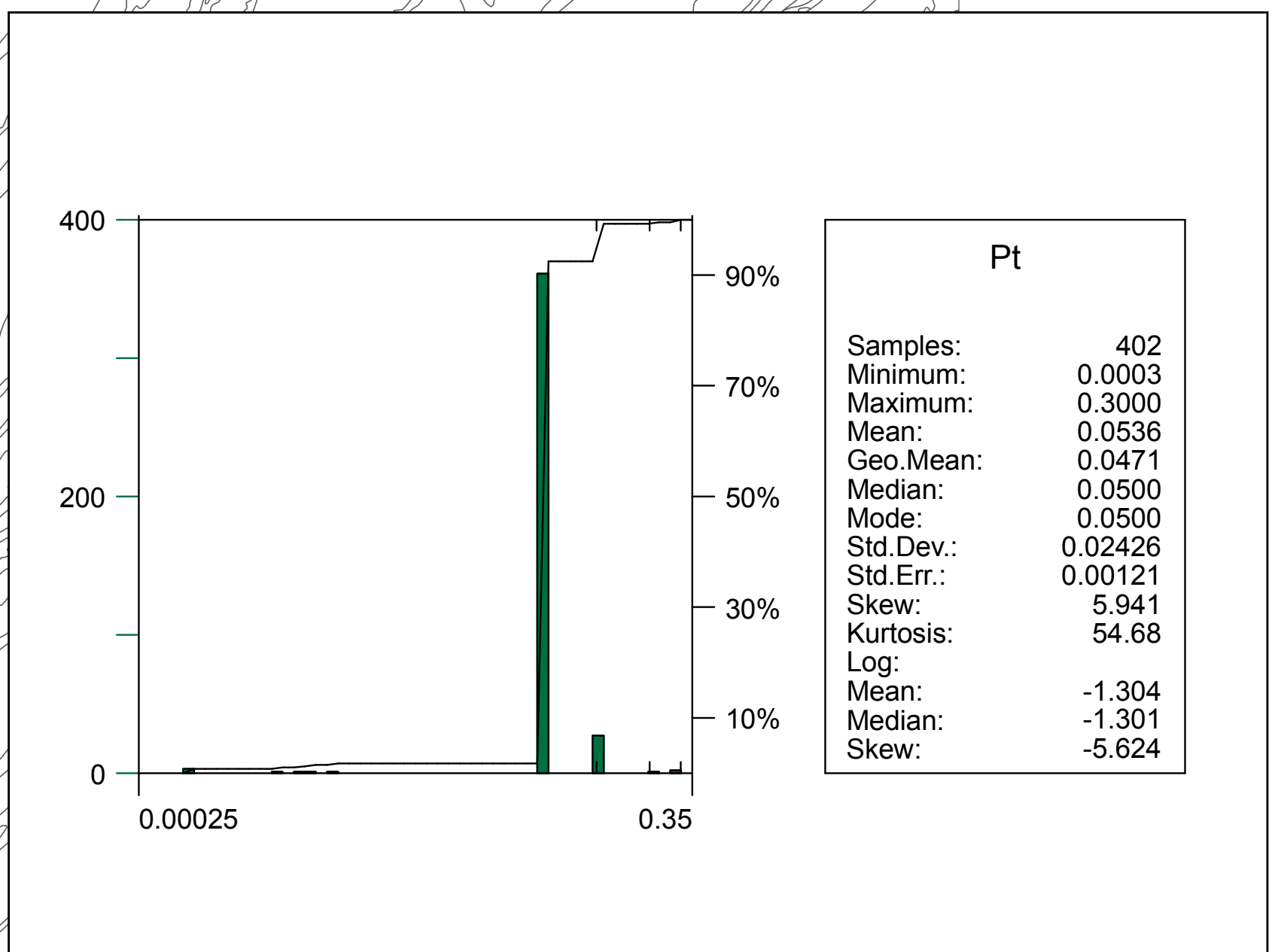
- Nord-east region sub-areas
- Geologic formation contact

Samples with no matching chemistry

- Rock (201 samples)

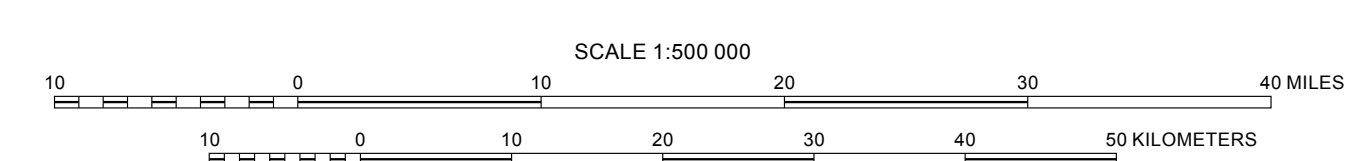
Rock samples - Platinum

- No Pt analysis (226 samples)
- 0.00025 - 0.05 ppm
- 0.1 - 0.2 ppm
- 0.3 ppm



Transverse Mercator projection, WGS 84 Datum
Scale factor @ 0°N: Longitude of central meridian 11° W, latitude of origin 0°

APPROXIMATE MEAN DECLINATION, 2007



This map was produced as part of the "Second Projet de Renforcement Institutionnel du Secteur Minier (PRISM II)" co-financed by the Government of Mauritania and the World Bank (Credit No. IDA-38100 MAU).