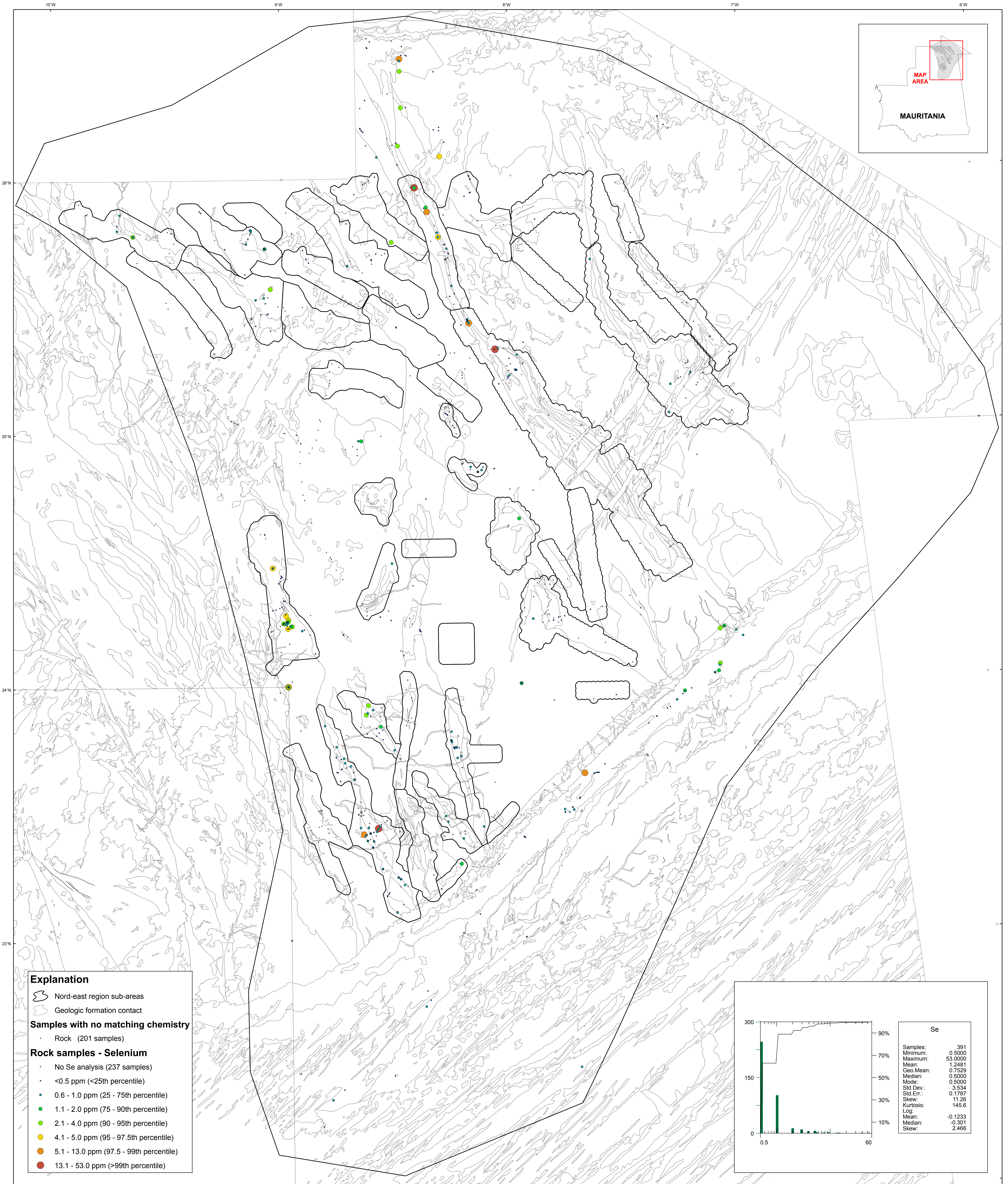


U.S. Department of the Interior  
U.S. Geological Survey  
By Stuart A. Giles and Robert G. Eppinger  
2012

**Geochemistry of Rocks in the Nord-East Area — Selenium**



**Explanation**

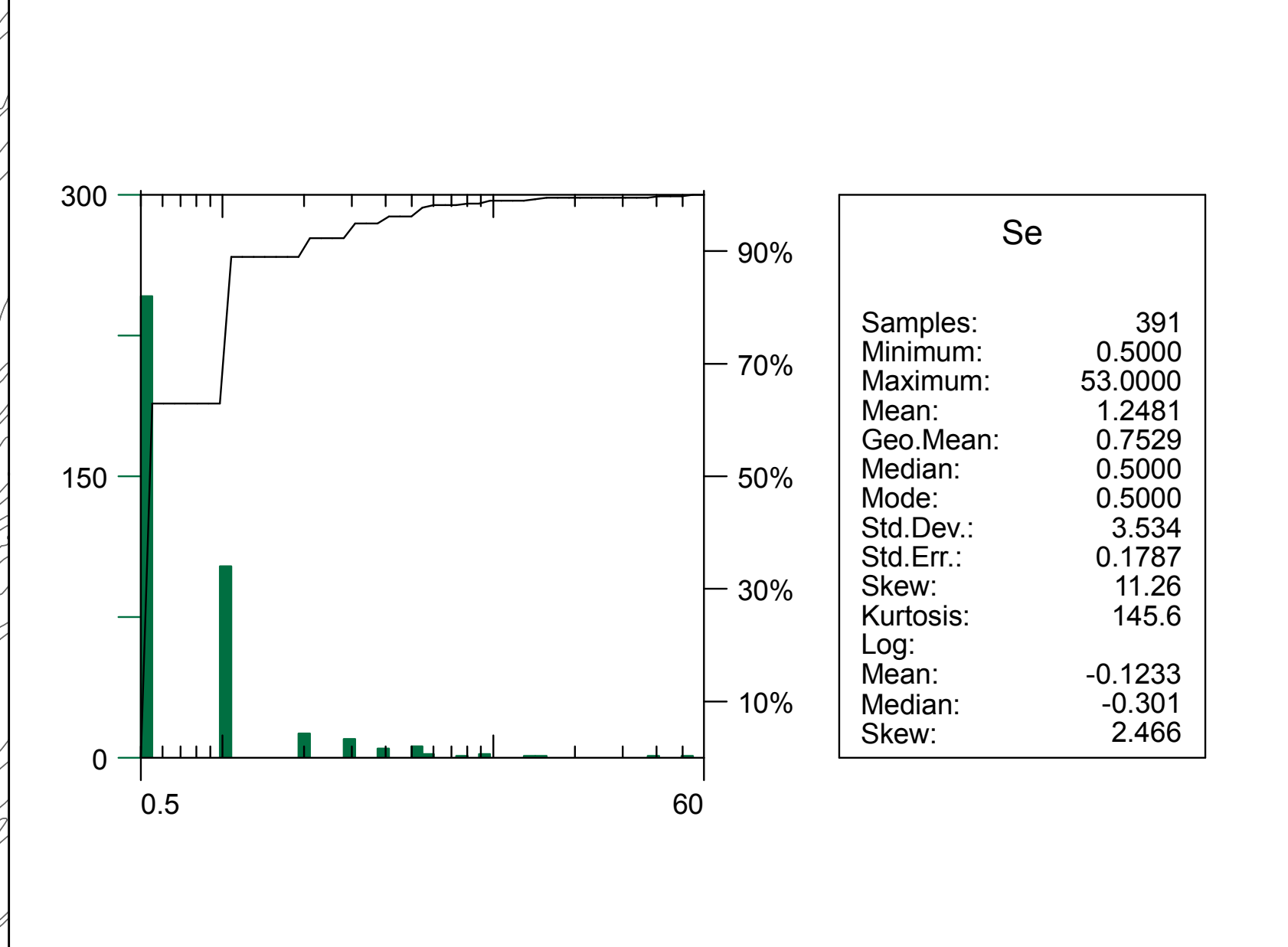
- Nord-east region sub-areas
- Geologic formation contact

**Samples with no matching chemistry**

- Rock (201 samples)

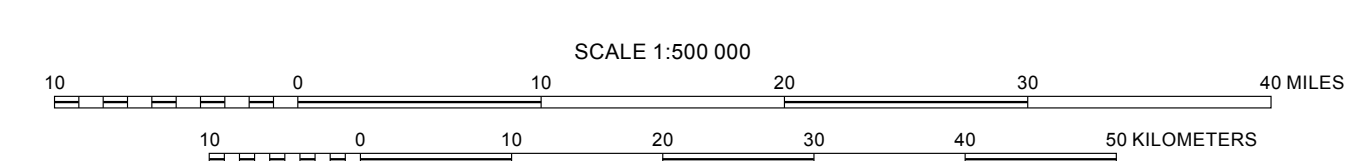
**Rock samples - Selenium**

- No Se analysis (237 samples)
- <0.5 ppm (<25th percentile)
- 0.6 - 1.0 ppm (25 - 75th percentile)
- 1.1 - 2.0 ppm (75 - 90th percentile)
- 2.1 - 4.0 ppm (90 - 95th percentile)
- 4.1 - 5.0 ppm (95 - 97.5th percentile)
- 5.1 - 13.0 ppm (97.5 - 99th percentile)
- 13.1 - 53.0 ppm (>99th percentile)



Transverse Mercator projection, WGS 84 Datum  
Scale factor 0.9996, Longitude of central meridian 11°W, latitude of origin 0°

APPROXIMATE MEAN DECLINATION, 2007



This map was produced as part of the "Second Projet de Renforcement Institutionnel du Secteur Minier (PRISM II)" co-financed by the Government of Mauritania and the World Bank (Credit No. IDA-38100 MAU).