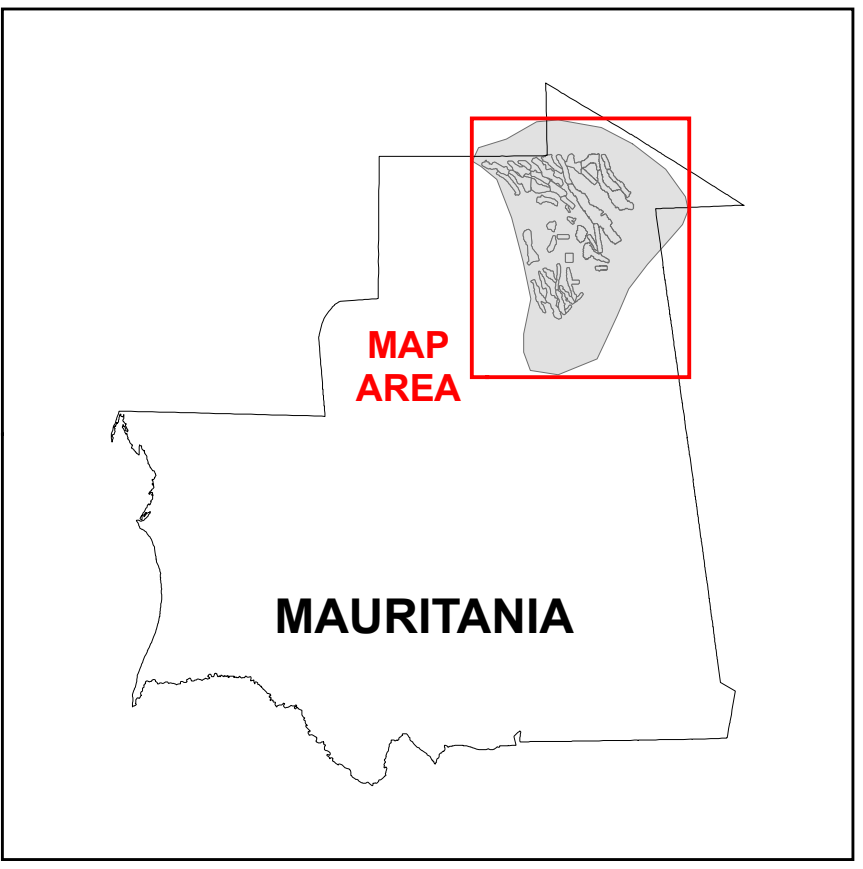
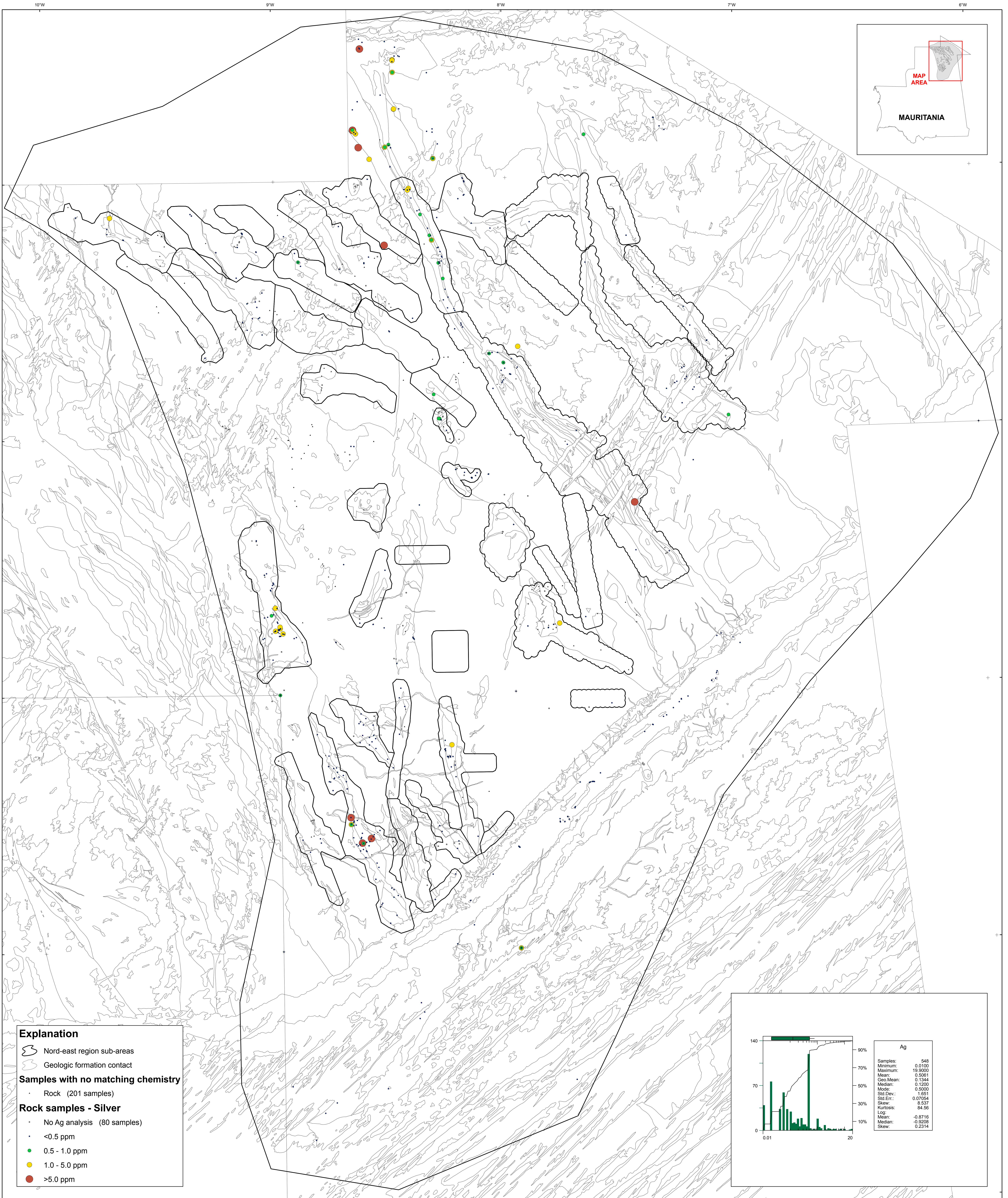


U.S. Department of the Interior
U.S. Geological Survey
By Stuart A. Giles and Robert G. Eppinger
2012

Geochemistry of Rocks in the Nord-East Area — Silver



Explanation

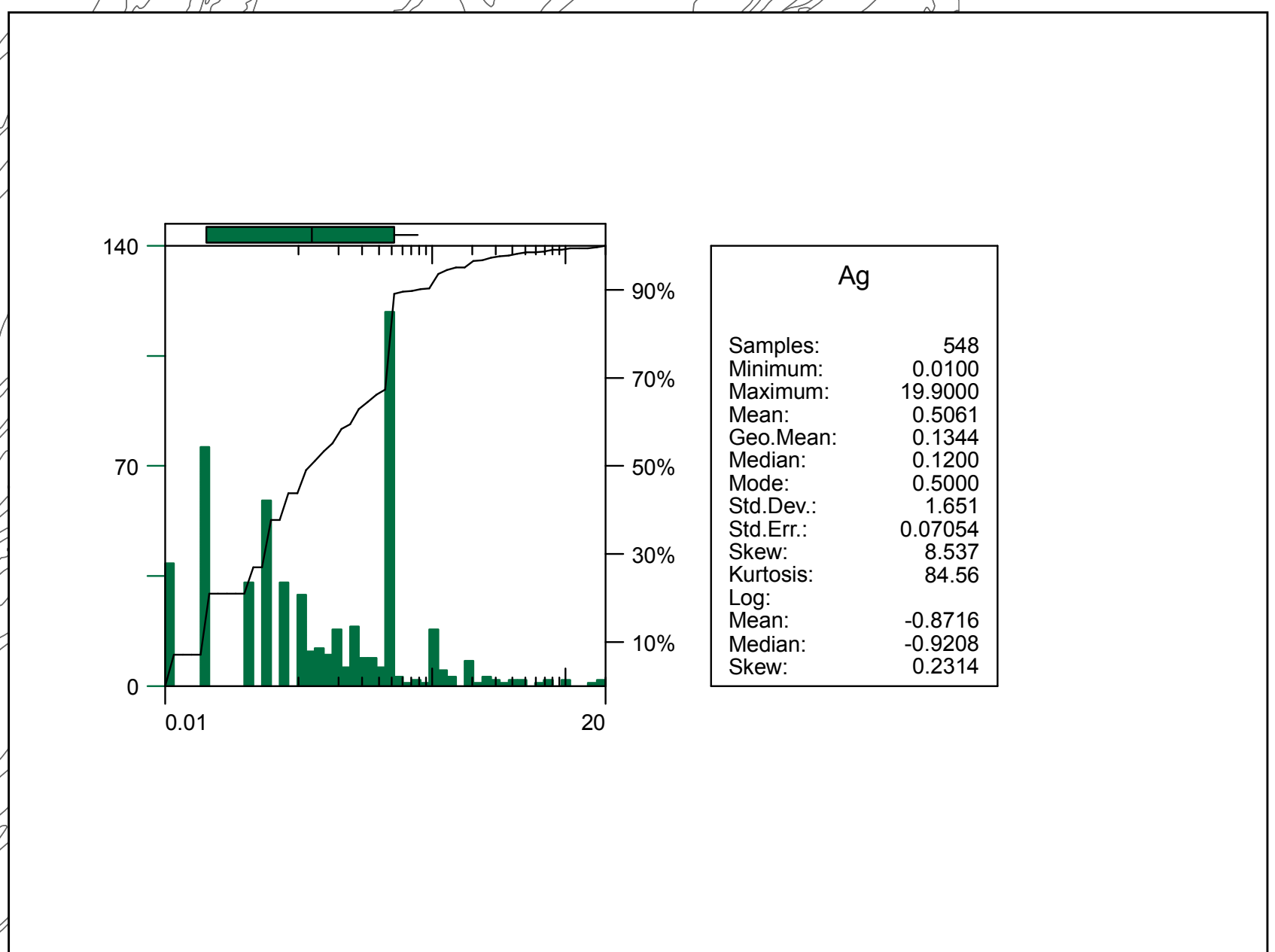
- Nord-east region sub-areas
- Geologic formation contact

Samples with no matching chemistry

- Rock (201 samples)

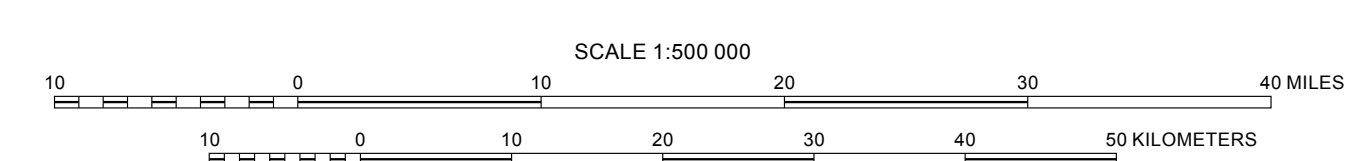
Rock samples - Silver

- No Ag analysis (80 samples)
- <0.5 ppm
- 0.5 - 1.0 ppm
- 1.0 - 5.0 ppm
- >5.0 ppm



Transverse Mercator projection, WGS 84 Datum
Scale factor 0.9996, Longitude of central meridian 11° W, latitude of origin 0°

APPROXIMATE MEAN DECLINATION, 2007



This map was produced as part of the "Second Projet de Renforcement Institutionnel du Secteur Minier (PRISM II)" co-financed by the Government of Mauritania and the World Bank (Credit No. IDA-38100 MAU).