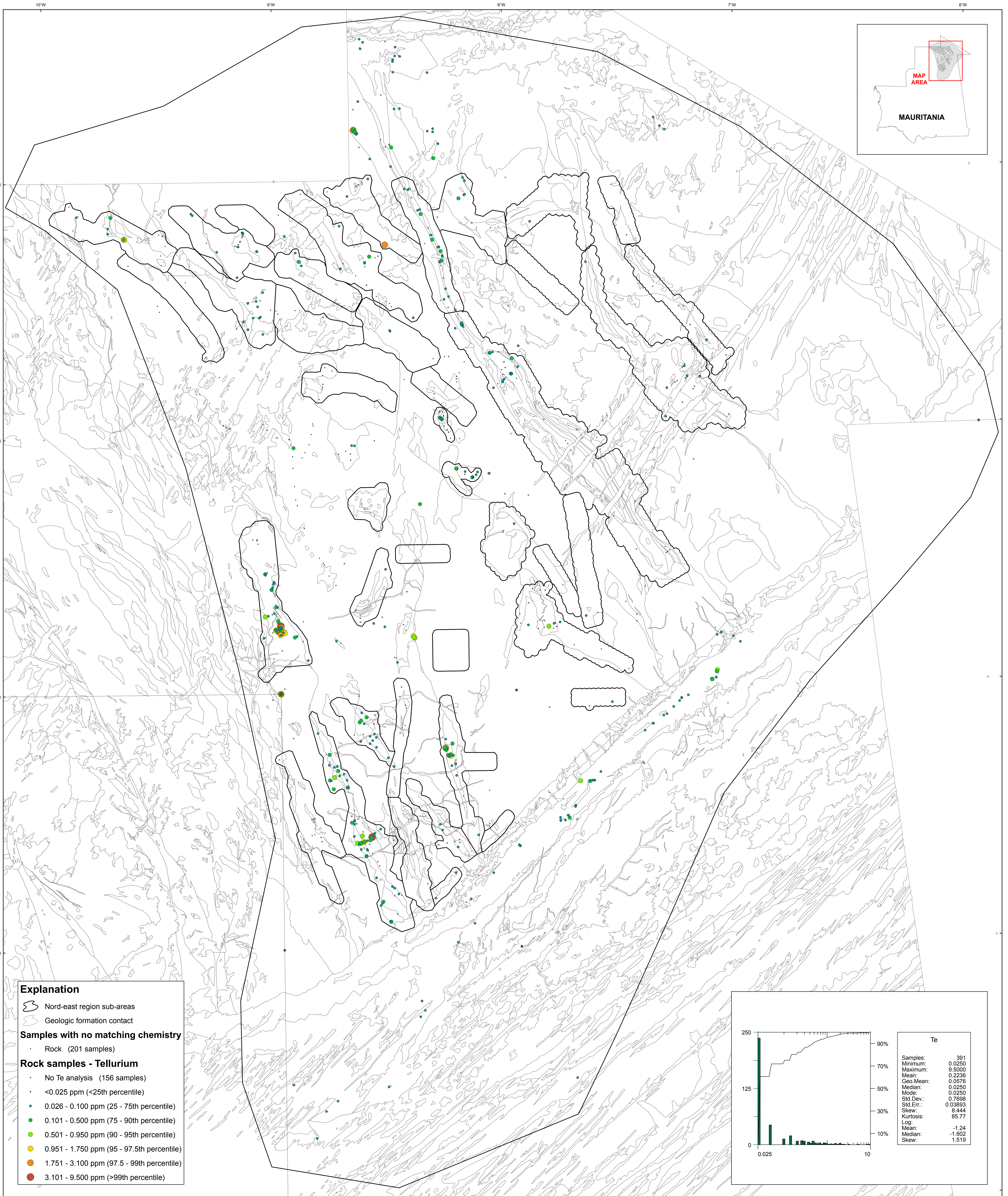


U.S. Department of the Interior
U.S. Geological Survey
By Stuart A. Giles and Robert G. Eppinger
2012

Geochemistry of Rocks in the Nord-East Area — Tellurium



Explanation

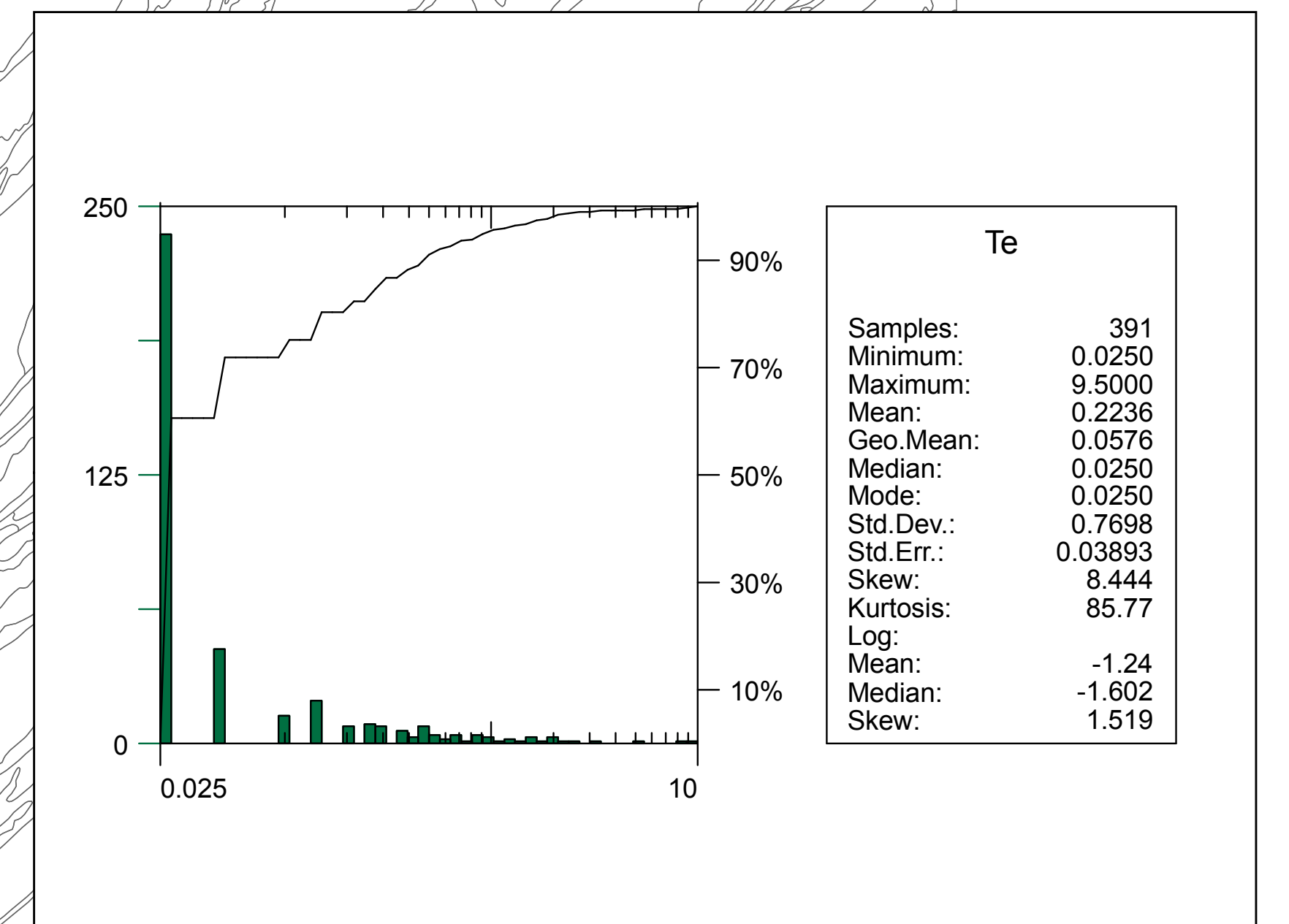
- Nord-east region sub-areas
- Geologic formation contact

Samples with no matching chemistry

- Rock (201 samples)

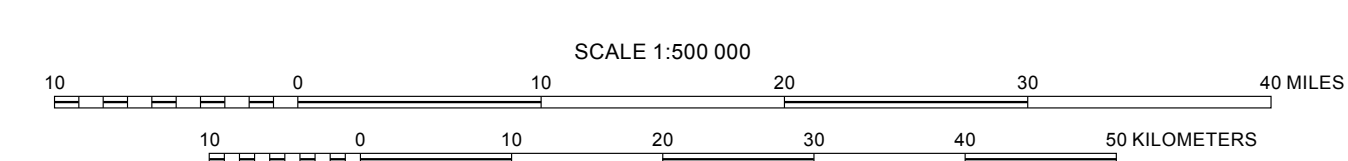
Rock samples - Tellurium

- No Te analysis (156 samples)
- <0.025 ppm (<25th percentile)
- 0.026 - 0.100 ppm (25 - 75th percentile)
- 0.101 - 0.500 ppm (75 - 90th percentile)
- 0.501 - 0.950 ppm (90 - 95th percentile)
- 0.951 - 1.750 ppm (95 - 97.5th percentile)
- 1.751 - 3.100 ppm (97.5 - 99th percentile)
- 3.101 - 9.500 ppm (>99th percentile)



Transverse Mercator projection, WGS 84 Datum
Scale factor 0.9996, Longitude of central meridian 11° W, latitude of origin 0°

APPROXIMATE MEAN DECLINATION, 2007



This map was produced as part of the "Second Projet de Renforcement Institutionnel du Secteur Minier (PRISM II)" co-financed by the Government of Mauritania and the World Bank (Credit No. IDA-38100 MAU).