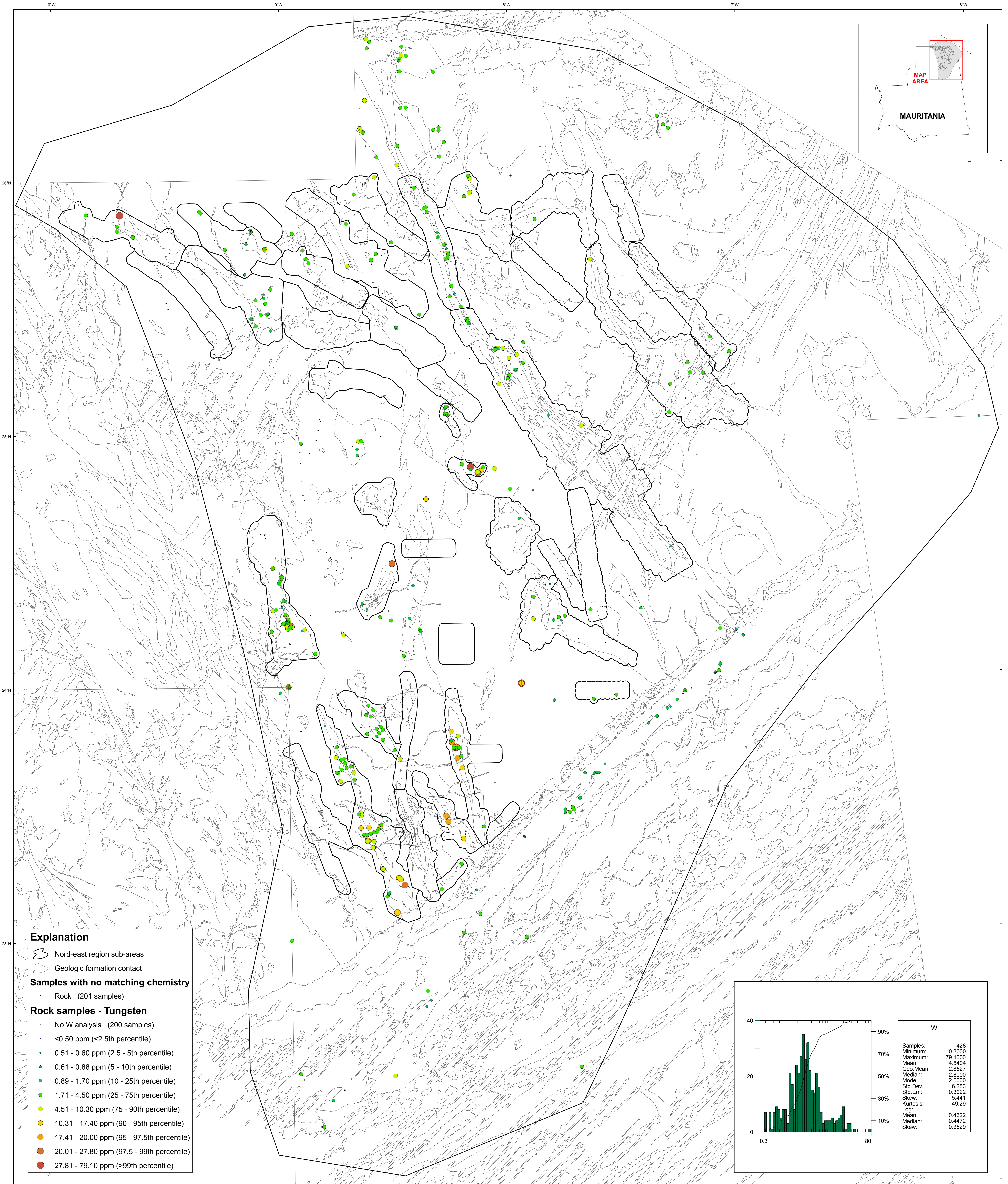


U.S. Department of the Interior
U.S. Geological Survey
By Stuart A. Giles and Robert G. Eppinger
2012

Geochemistry of Rocks in the Nord-East Area — Tungsten



Explanation

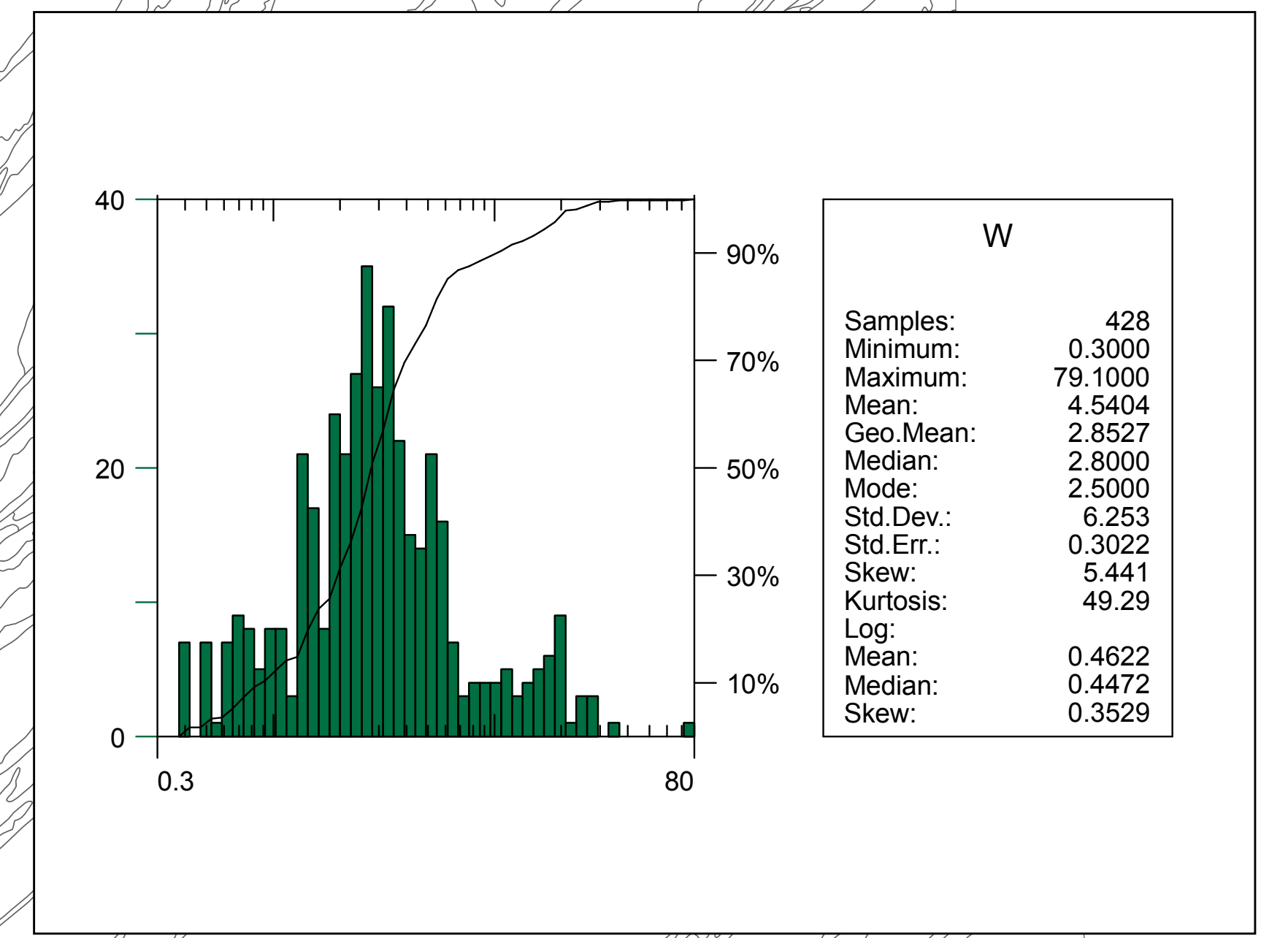
- Nord-east region sub-areas
- Geologic formation contact

Samples with no matching chemistry

- Rock (201 samples)

Rock samples - Tungsten

- No W analysis (200 samples)
- <0.50 ppm (<2.5th percentile)
- 0.51 - 0.60 ppm (2.5 - 5th percentile)
- 0.61 - 0.88 ppm (5 - 10th percentile)
- 0.89 - 1.70 ppm (10 - 25th percentile)
- 1.71 - 4.50 ppm (25 - 75th percentile)
- 4.51 - 10.30 ppm (75 - 90th percentile)
- 10.31 - 17.40 ppm (90 - 95th percentile)
- 17.41 - 20.00 ppm (95 - 97.5th percentile)
- 20.01 - 27.80 ppm (97.5 - 99th percentile)
- 27.81 - 79.10 ppm (>99th percentile)



Transverse Mercator projection, WGS 84 Datum
Scale factor @ 0°N: Longitude of central meridian 11°W, latitude of origin 0°

APPROXIMATE MEAN DECLINATION, 2007

SCALE 1:500,000
0 10 20 30 40 MILES
0 10 20 30 40 50 KILOMETERS

This map was produced as part of the "Second Projet de Renforcement Institutionnel du Secteur Minier (PRISM II)" co-financed by the Government of Mauritania and the World Bank (Credit No. IDA-38100 MAU).