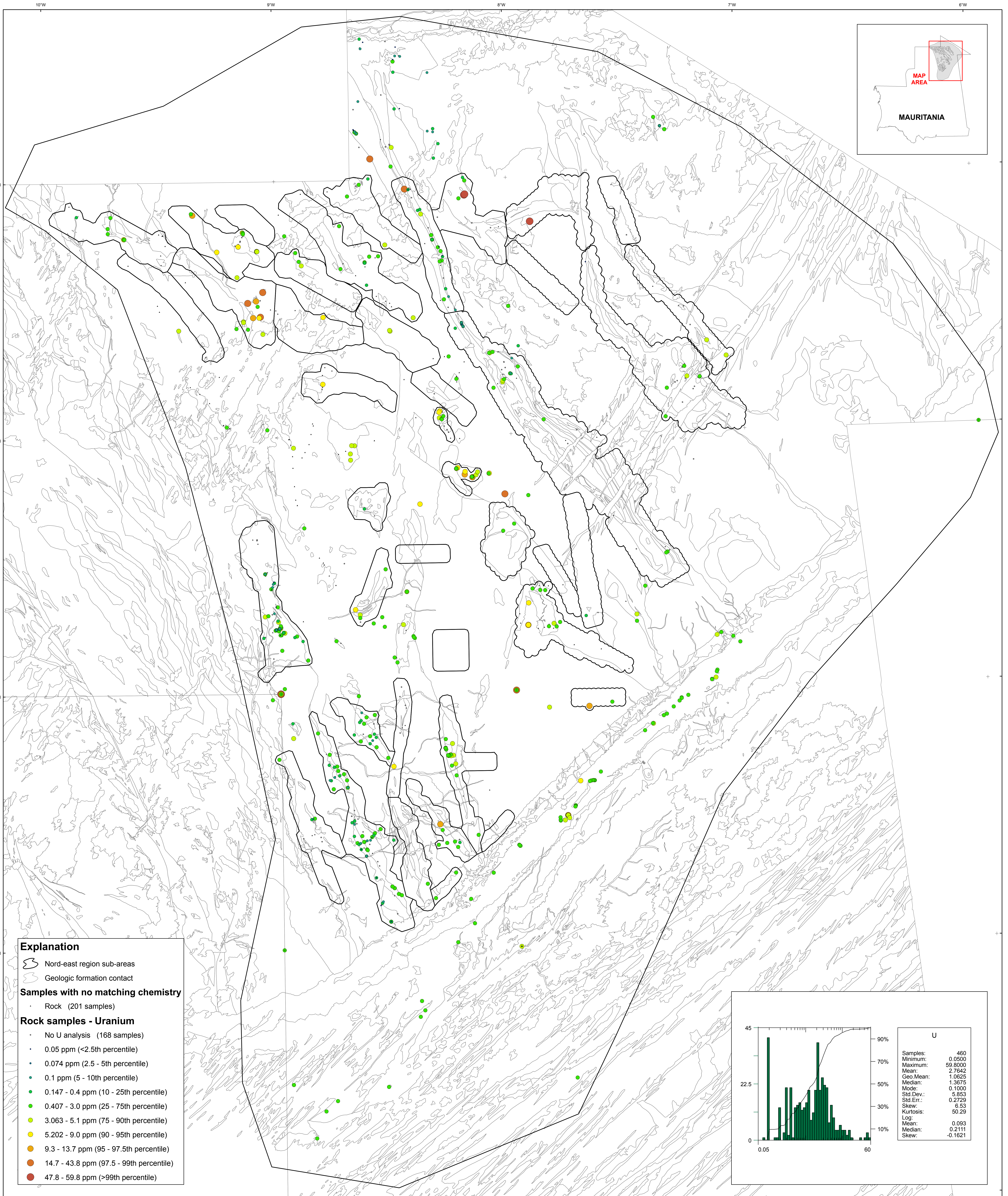
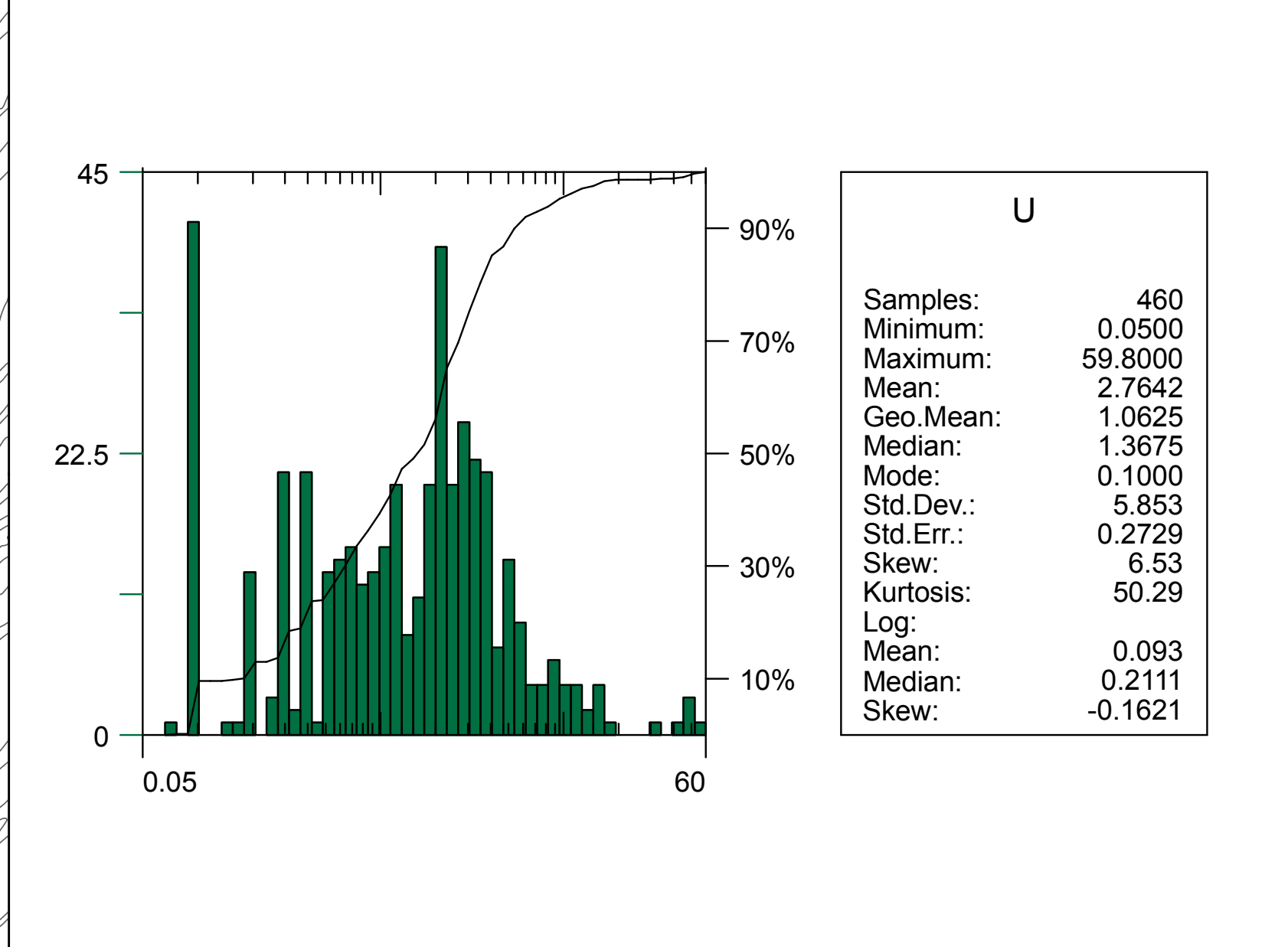


U.S. Department of the Interior
U.S. Geological Survey
By Stuart A. Giles and Robert G. Eppinger
2012

Geochemistry of Rocks in the Nord-East Area — Uranium



- Explanation**
- Nord-east region sub-areas
 - Geologic formation contact
- Samples with no matching chemistry**
- Rock (201 samples)
- Rock samples - Uranium**
- No U analysis (168 samples)
 - 0.05 ppm (<2.5th percentile)
 - 0.074 ppm (2.5 - 5th percentile)
 - 0.1 ppm (5 - 10th percentile)
 - 0.147 - 0.4 ppm (10 - 25th percentile)
 - 0.407 - 3.0 ppm (25 - 75th percentile)
 - 3.063 - 5.1 ppm (75 - 90th percentile)
 - 5.202 - 9.0 ppm (90 - 95th percentile)
 - 9.3 - 13.7 ppm (95 - 97.5th percentile)
 - 14.7 - 43.8 ppm (97.5 - 99th percentile)
 - 47.8 - 59.8 ppm (>99th percentile)



Transverse Mercator projection, WGS 84 Datum
Scale factor 0.999, Longitude of central meridian 11°W, latitude of origin 0°

APPROXIMATE MEAN DECLINATION, 2007

SCALE 1:500 000
0 10 20 30 40 50 MILES
0 10 20 30 40 50 KILOMETERS

This map was produced as part of the "Second Projet de Renforcement Institutionnel du Secteur Minier (PRISM II)" co-financed by the Government of Mauritania and the World Bank (Credit No. IDA-38100 MAU).