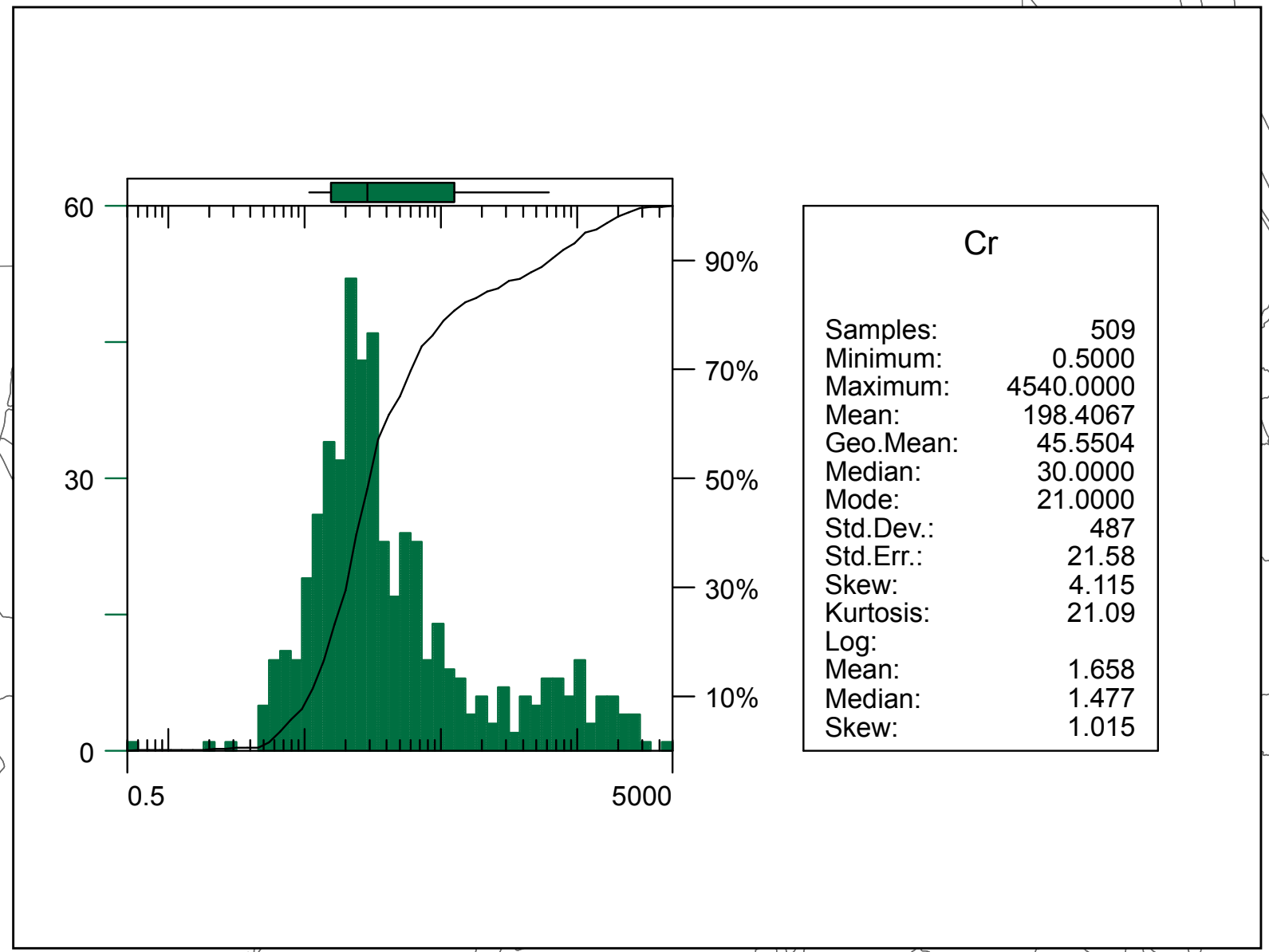
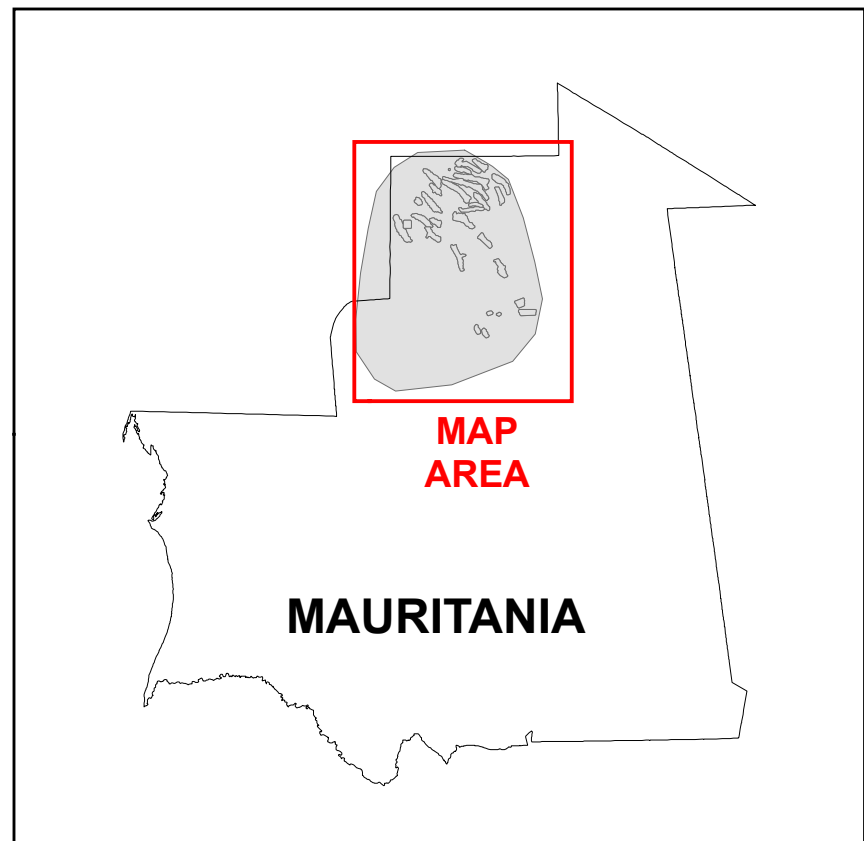
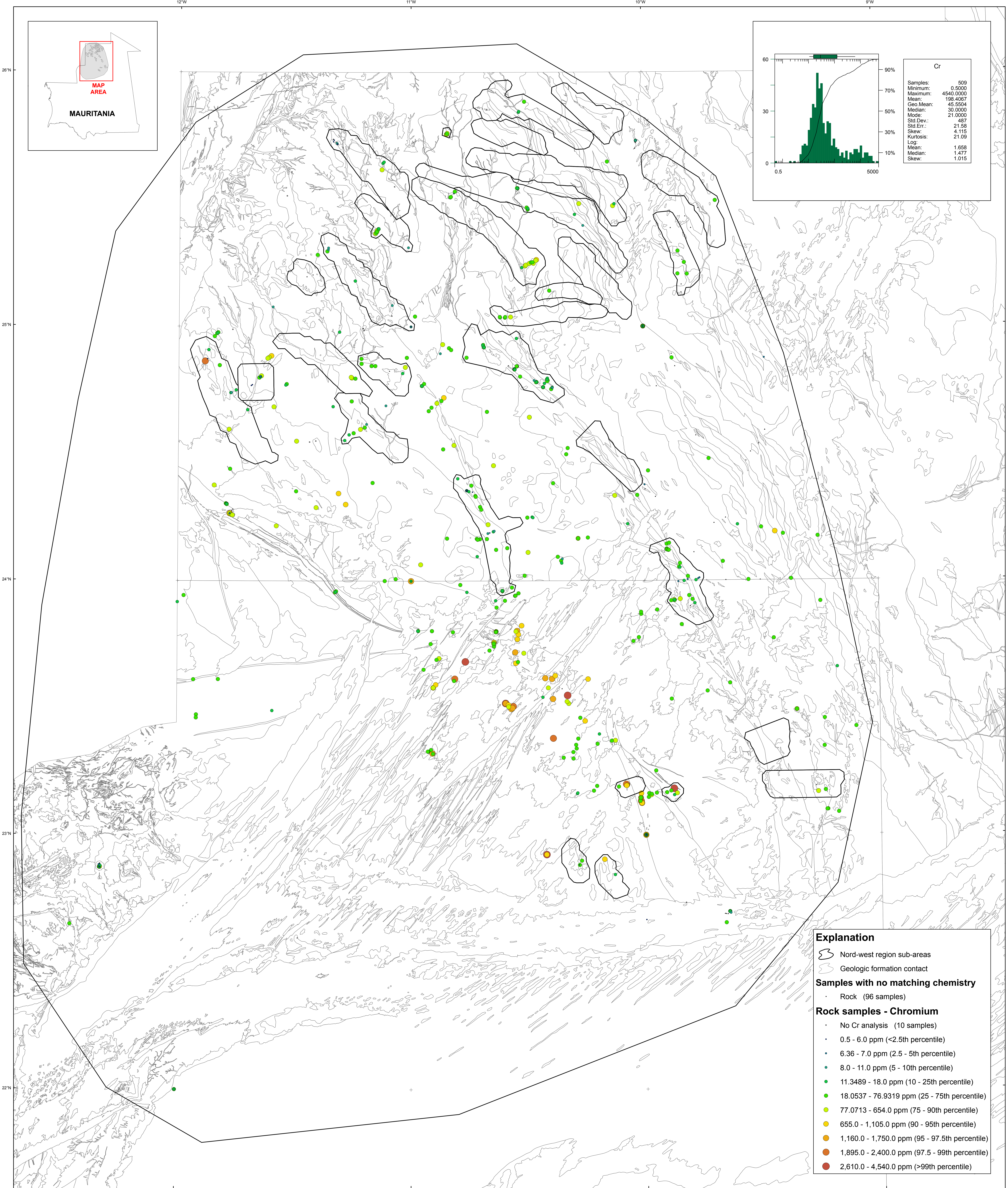


U.S. Department of the Interior
 U.S. Geological Survey
 By Stuart A. Giles and Robert G. Eppinger
 2012

Geochemistry of Rocks in the Nord-west Area — Chromium



Explanation

- Nord-west region sub-areas
- Geologic formation contact

Samples with no matching chemistry

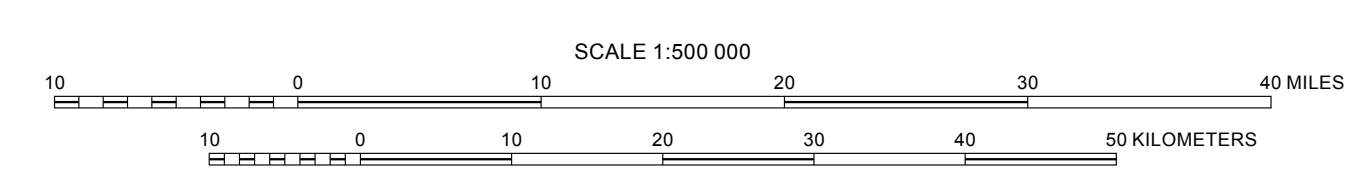
- Rock (96 samples)

Rock samples - Chromium

- No Cr analysis (10 samples)
- 0.5 - 6.0 ppm (<2.5th percentile)
- 6.36 - 7.0 ppm (2.5 - 5th percentile)
- 8.0 - 11.0 ppm (5 - 10th percentile)
- 11.3489 - 18.0 ppm (10 - 25th percentile)
- 18.0537 - 76.9319 ppm (25 - 75th percentile)
- 77.0713 - 654.0 ppm (75 - 90th percentile)
- 655.0 - 1,105.0 ppm (90 - 95th percentile)
- 1,160.0 - 1,750.0 ppm (95 - 97.5th percentile)
- 1,895.0 - 2,400.0 ppm (97.5 - 99th percentile)
- 2,610.0 - 4,540.0 ppm (>99th percentile)

Transverse Mercator projection, WGS 84 Datum
 Scale factor @ 0°N: Longitude of central meridian 11° W, latitude of origin 0°

APPROXIMATE MEAN DECLINATION 2007



This map was produced as part of the "Second Projet de Renforcement Institutionnel du Secteur Minier (PRISM II)" co-financed by the Government of Mauritania and the World Bank (Credit No. IDA-38100 MAU).