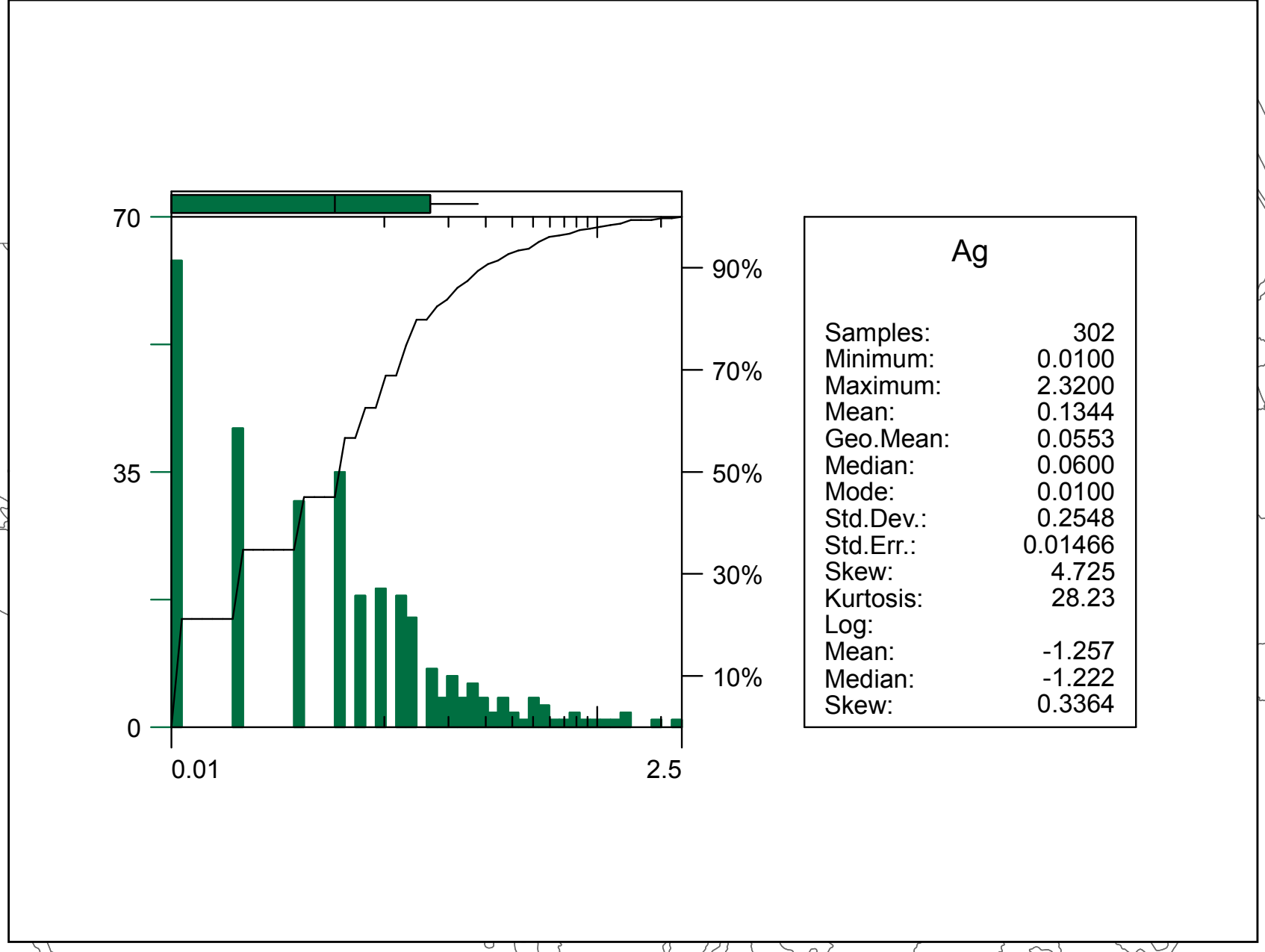
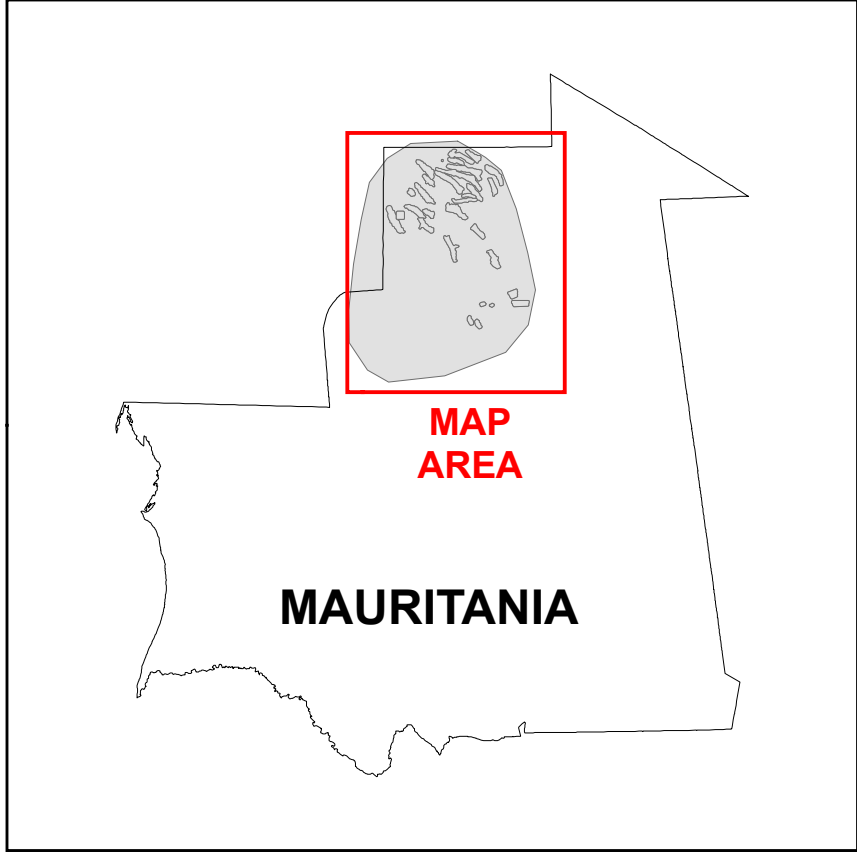
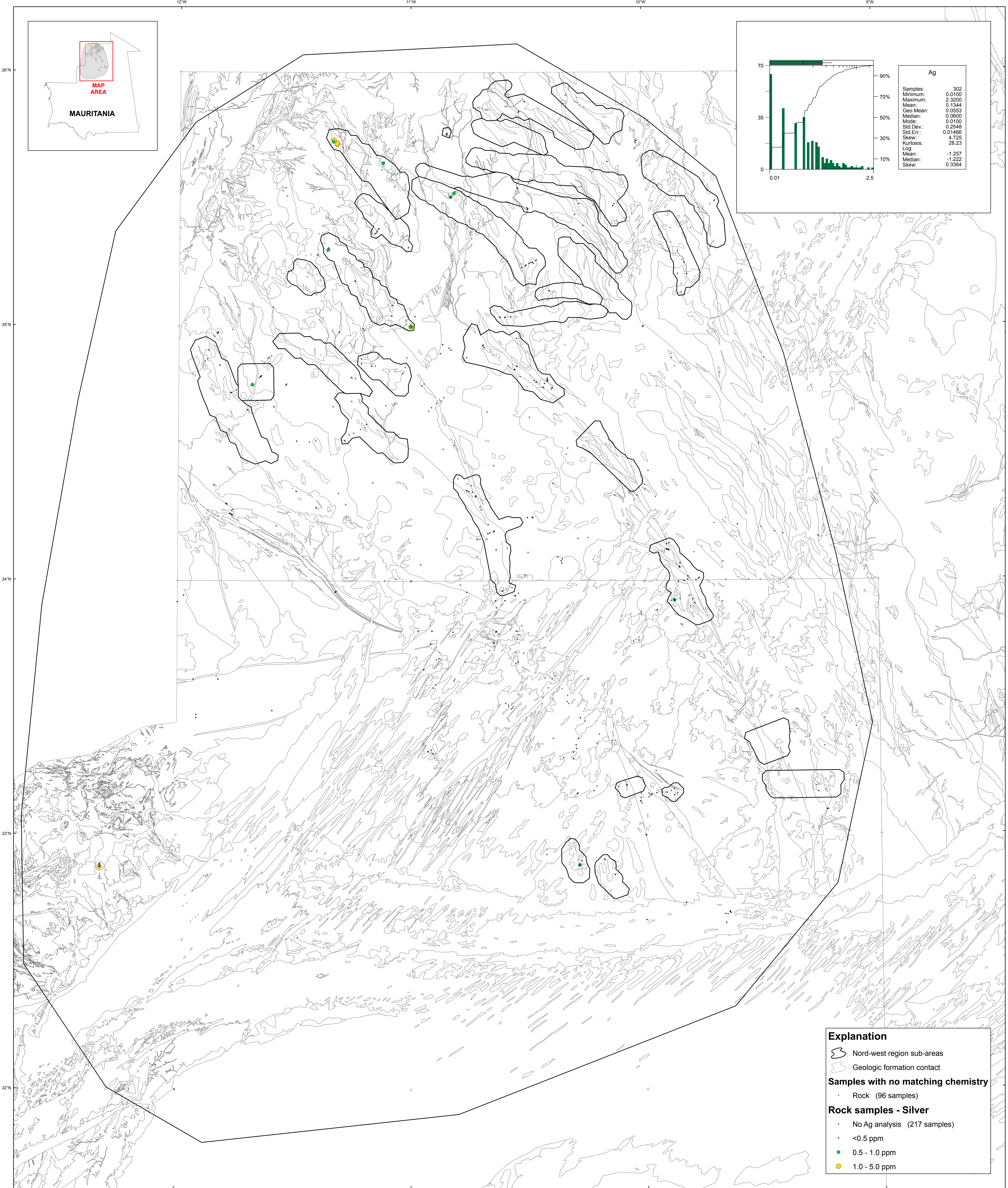


U.S. Department of the Interior
 U.S. Geological Survey
 By Stuart A. Giles and Robert G. Eppinger
 2012

Geochemistry of Rocks in the Nord-west Area — Silver



Explanation

- Nord-west region sub-areas
- Geologic formation contact

Samples with no matching chemistry

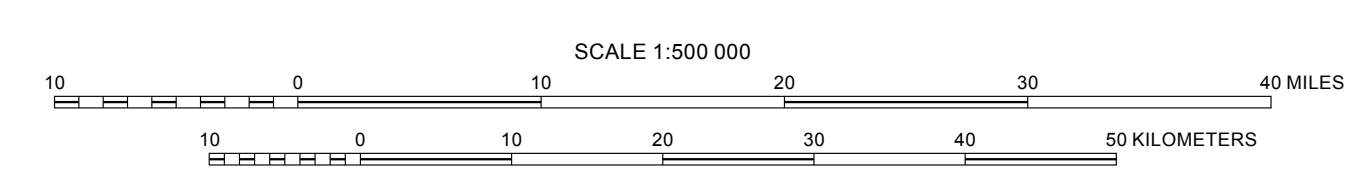
- Rock (96 samples)

Rock samples - Silver

- No Ag analysis (217 samples)
- <0.5 ppm
- 0.5 - 1.0 ppm
- 1.0 - 5.0 ppm

Transverse Mercator projection, WGS 84 Datum
 Scale factor @ 0°N: Longitude of central meridian 11° W, latitude of origin 0°

APPROXIMATE MEAN DECLINATION, 2007



This map was produced as part of the "Second Projet de Renforcement Institutionnel du Secteur Minier (PRISM II)" co-financed by the Government of Mauritania and the World Bank (Credit No. IDA-38100 MAU).