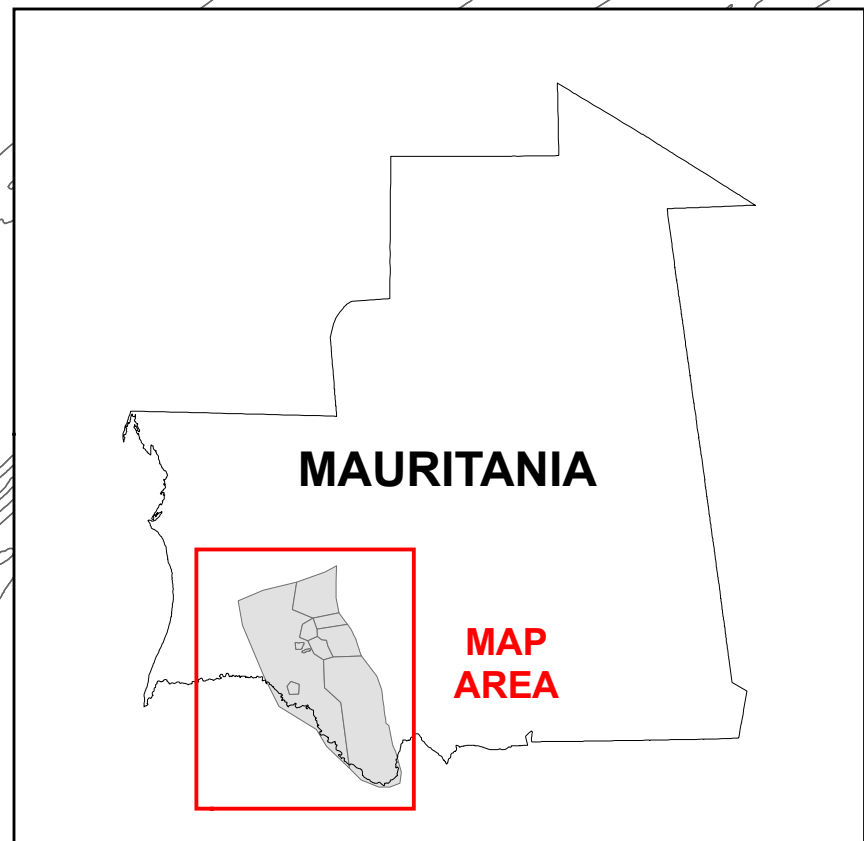
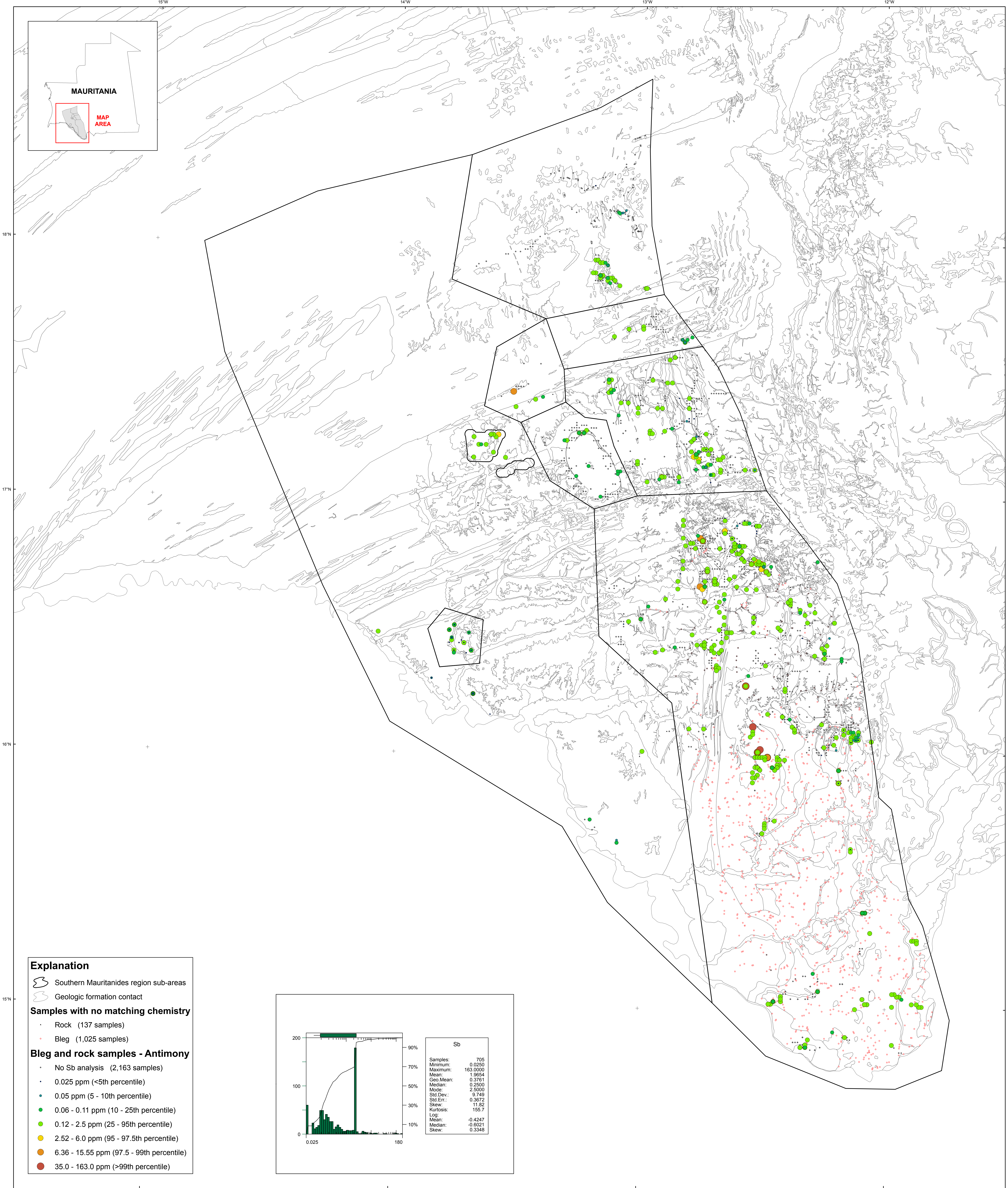


**Geochemistry of Rocks in the Central Mauritanides — Antimony**



- Explanation**
- Southern Mauritanides region sub-areas
  - Geologic formation contact
- Samples with no matching chemistry**
- Rock (137 samples)
  - Bleg (1,025 samples)
- Bleg and rock samples - Antimony**
- No Sb analysis (2,163 samples)
  - 0.025 ppm (<5th percentile)
  - 0.05 ppm (5 - 10th percentile)
  - 0.06 - 0.11 ppm (10 - 25th percentile)
  - 0.12 - 2.5 ppm (25 - 95th percentile)
  - 2.52 - 6.0 ppm (95 - 97.5th percentile)
  - 6.36 - 15.55 ppm (97.5 - 99th percentile)
  - 35.0 - 163.0 ppm (>99th percentile)

