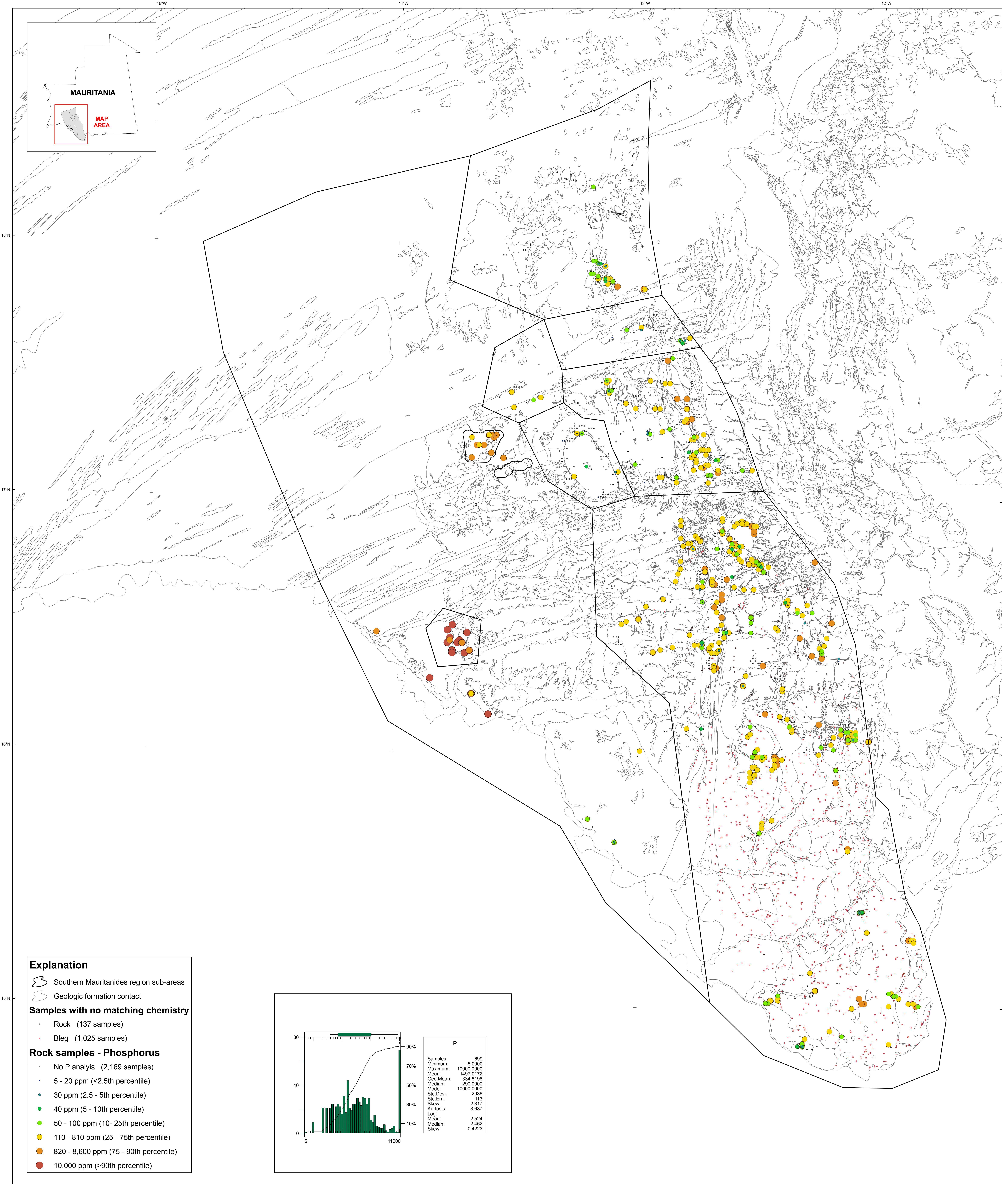


U.S. Department of the Interior
U.S. Geological Survey
By Stuart A. Giles and Robert G. Eppinger
2012

Geochemistry of Rocks in the Central Mauritanides — Phosphorus



Explanation

Southern Mauritanides region sub-areas

Geologic formation contact

Samples with no matching chemistry

• Rock (137 samples)

• Bleg (1,025 samples)

Rock samples - Phosphorus

• No P analysis (2,169 samples)

• 5 - 20 ppm (<2.5th percentile)

• 30 ppm (2.5 - 5th percentile)

• 40 ppm (5 - 10th percentile)

• 50 - 100 ppm (10 - 25th percentile)

• 110 - 810 ppm (25 - 75th percentile)

• 820 - 8,600 ppm (75 - 90th percentile)

• 10,000 ppm (>90th percentile)

