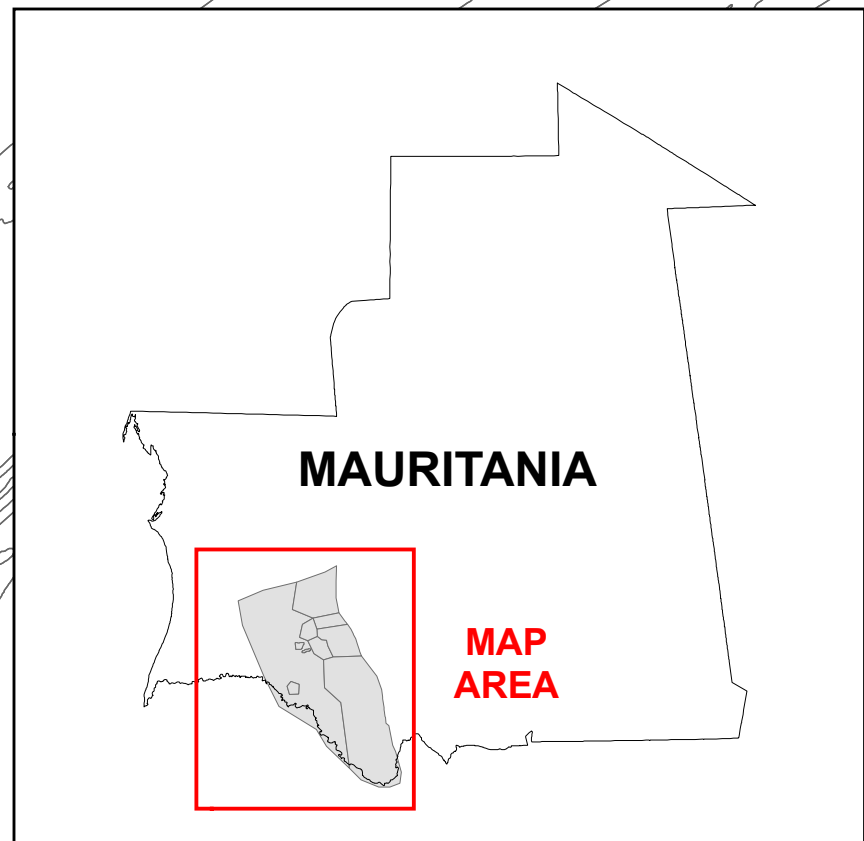
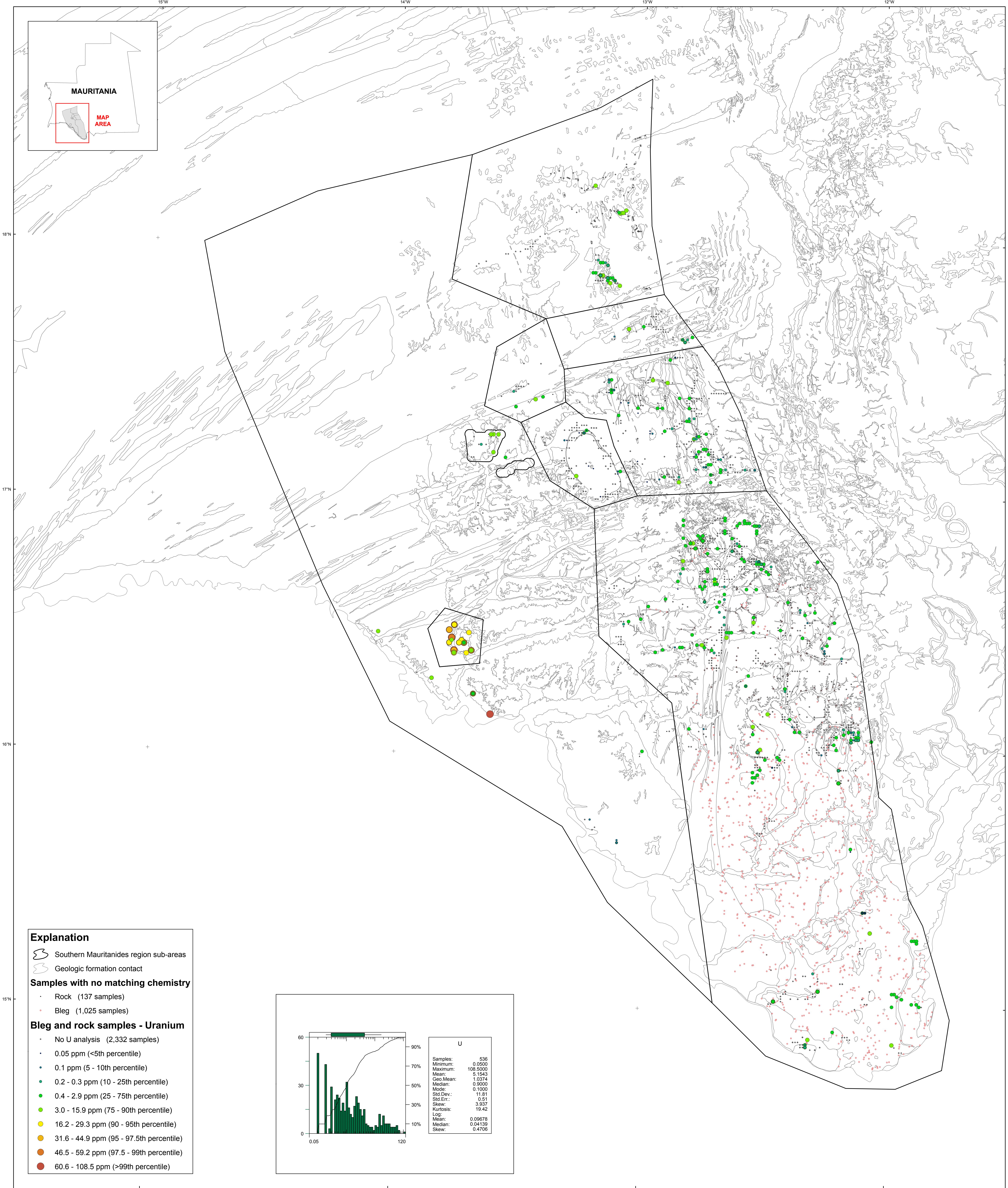
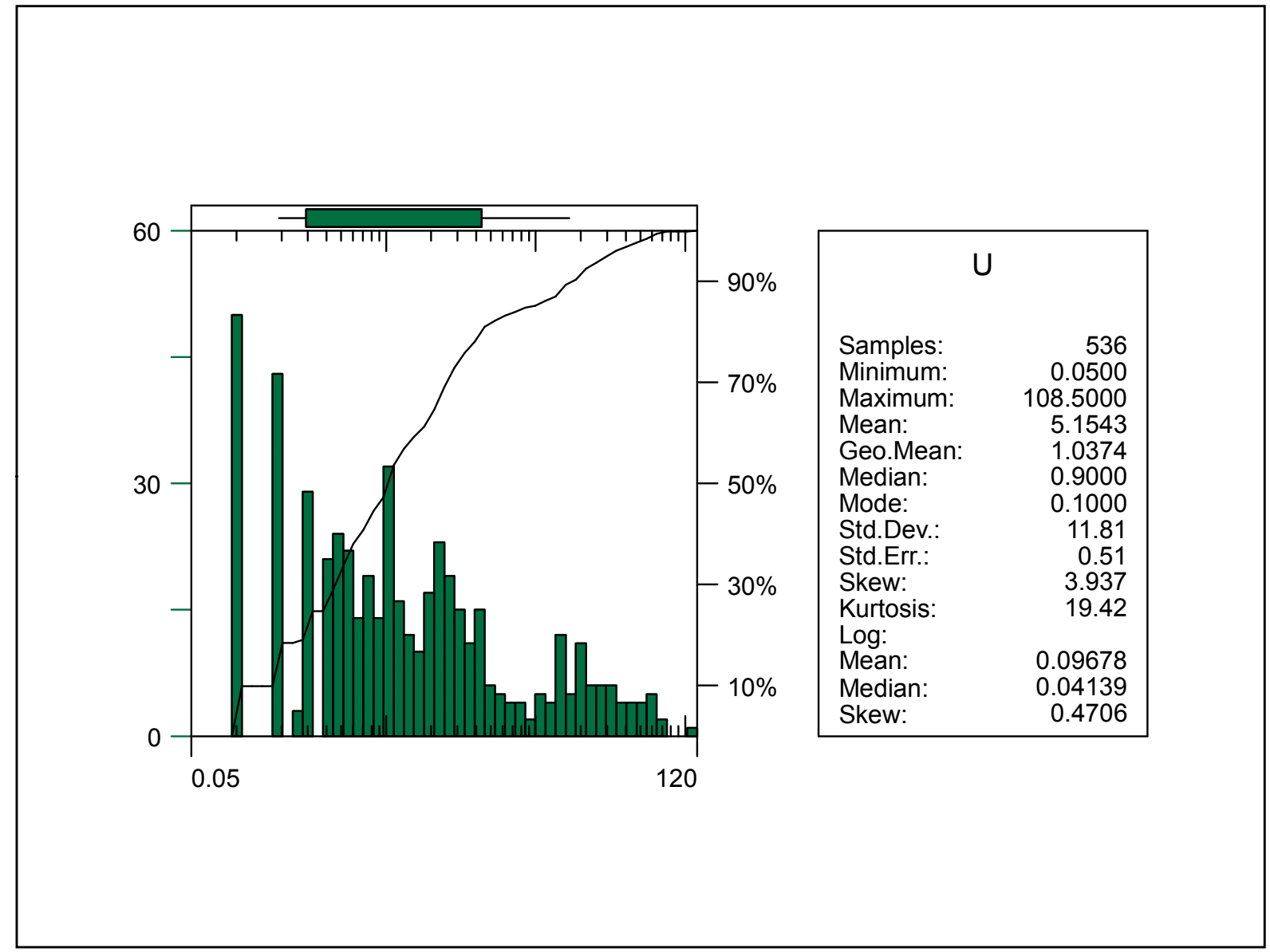


U.S. Department of the Interior
U.S. Geological Survey
By Stuart A. Giles and Robert G. Eppinger
2012

Geochemistry of Rocks in the Central Mauritanides — Uranium

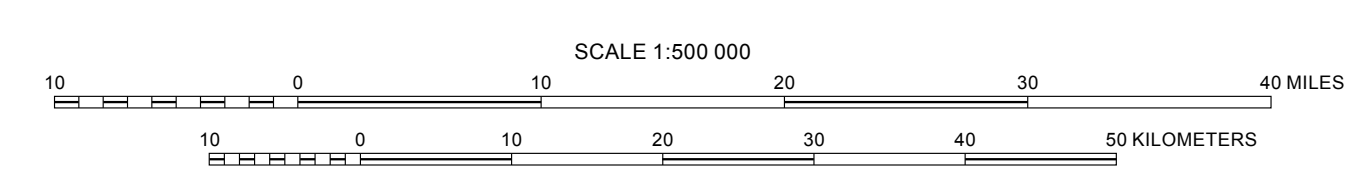


- Explanation**
- Southern Mauritanides region sub-areas
 - Geologic formation contact
- Samples with no matching chemistry**
- Rock (137 samples)
 - Bleg (1,025 samples)
- Bleg and rock samples - Uranium**
- No U analysis (2,332 samples)
 - 0.05 ppm (<5th percentile)
 - 0.1 ppm (5 - 10th percentile)
 - 0.2 - 0.3 ppm (10 - 25th percentile)
 - 0.4 - 2.9 ppm (25 - 75th percentile)
 - 3.0 - 15.9 ppm (75 - 90th percentile)
 - 16.2 - 29.3 ppm (90 - 95th percentile)
 - 31.6 - 44.9 ppm (95 - 97.5th percentile)
 - 46.5 - 59.2 ppm (97.5 - 99th percentile)
 - 60.6 - 108.5 ppm (>99th percentile)



Transverse Mercator projection, WGS 84 Datum
Scale factor 0.999; Longitude of central meridian 11° W; Latitude of origin 0°

APPROXIMATE MEAN DECLINATION, 2007



This map was produced as part of the "Second Projet de Renforcement Institutionnel du Secteur Minier (PRISM II)" co-financed by the Government of Mauritania and the World Bank (Credit No. IDA-38100 MAU).