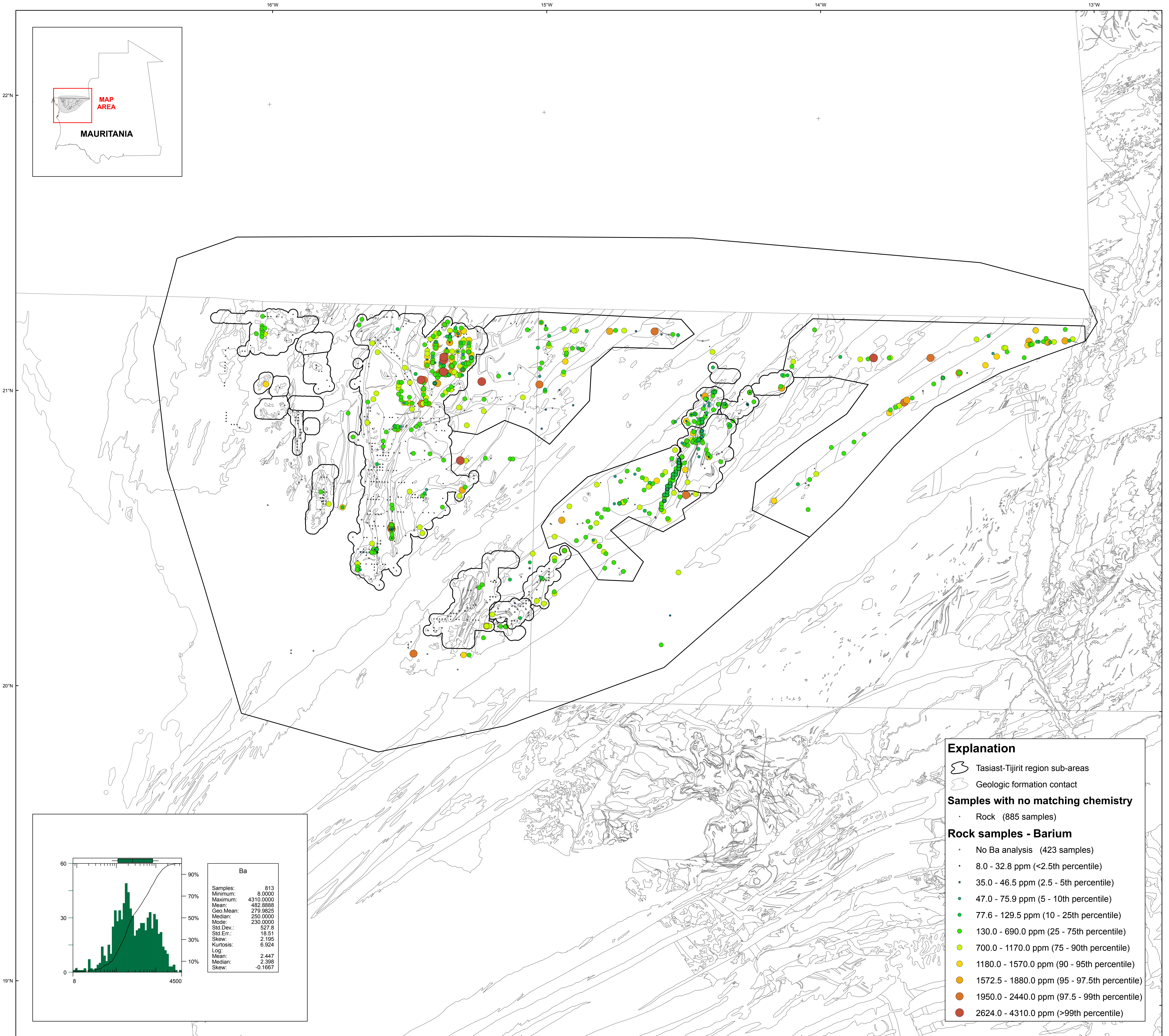


U.S. Department of the Interior
U.S. Geological Survey
By Stuart A. Giles and Robert G. Eppinger
2012

Geochemistry of Rocks in the Tasiast-Tijirit Area — Barium



Ba	
Samples:	813
Minimum:	8.0000
Maximum:	4310.0000
Mean:	482.8888
Geo Mean:	279.9825
Median:	250.0000
Mode:	230.0000
Std.Dev.:	527.8
Std.Err.:	18.51
Skew:	2.135
Kurtosis:	6.924
Log:	
Mean:	2.447
Median:	2.338
Skew:	-0.1667

- Explanation**
- Tasiast-Tijirit region sub-areas
 - Geologic formation contact
- Samples with no matching chemistry**
- Rock (885 samples)
- Rock samples - Barium**
- No Ba analysis (423 samples)
 - 8.0 - 32.8 ppm (<2.5th percentile)
 - 35.0 - 46.5 ppm (2.5 - 5th percentile)
 - 47.0 - 75.9 ppm (5 - 10th percentile)
 - 77.6 - 129.5 ppm (10 - 25th percentile)
 - 130.0 - 690.0 ppm (25 - 75th percentile)
 - 700.0 - 1170.0 ppm (75 - 90th percentile)
 - 1180.0 - 1570.0 ppm (90 - 95th percentile)
 - 1572.5 - 1880.0 ppm (95 - 97.5th percentile)
 - 1950.0 - 2440.0 ppm (97.5 - 99th percentile)
 - 2624.0 - 4310.0 ppm (>99th percentile)