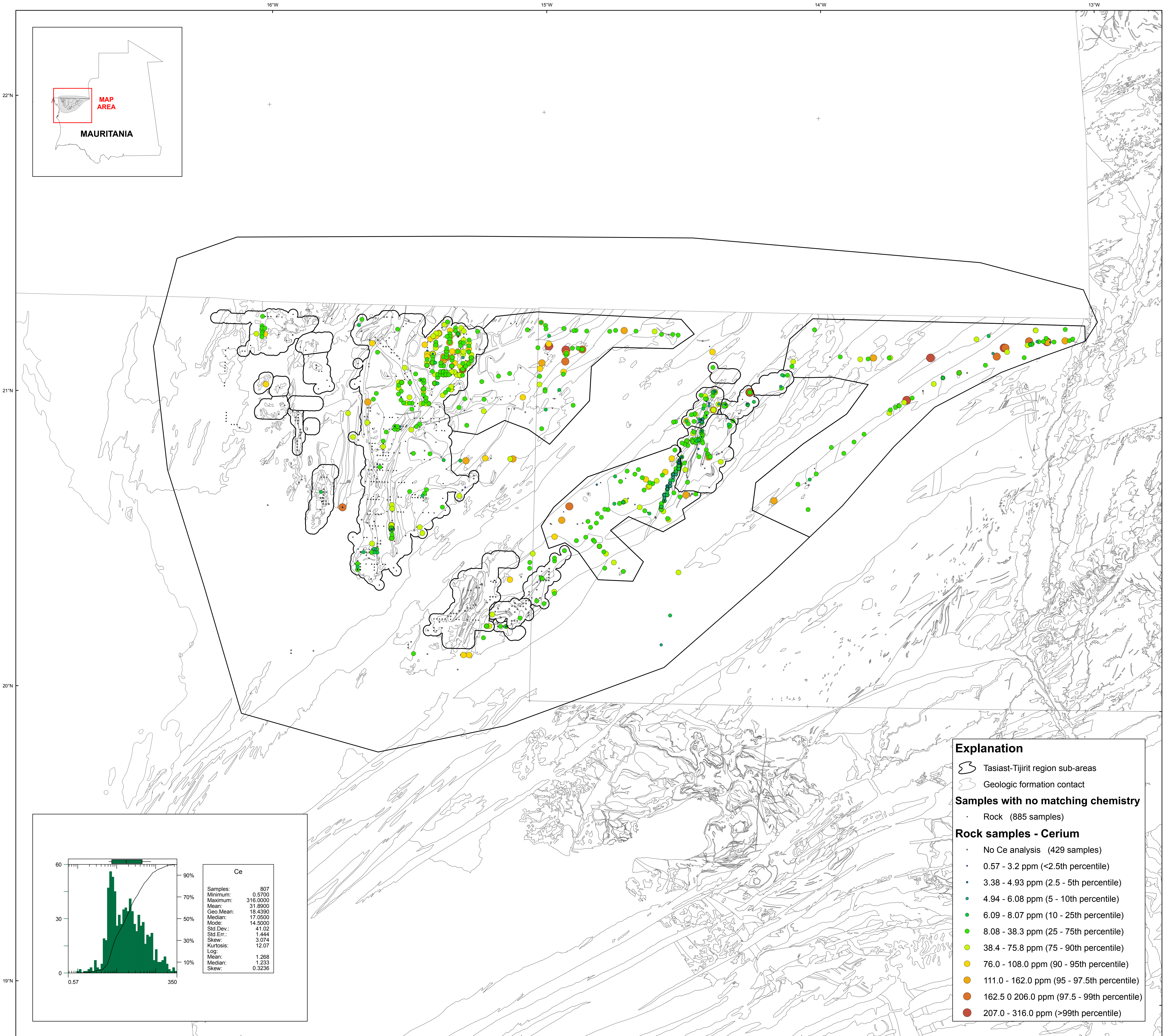


U.S. Department of the Interior
U.S. Geological Survey
By Stuart A. Giles and Robert G. Eppinger
2012

Geochemistry of Rocks in the Tasiast-Tijirit Area — Cerium



Explanation

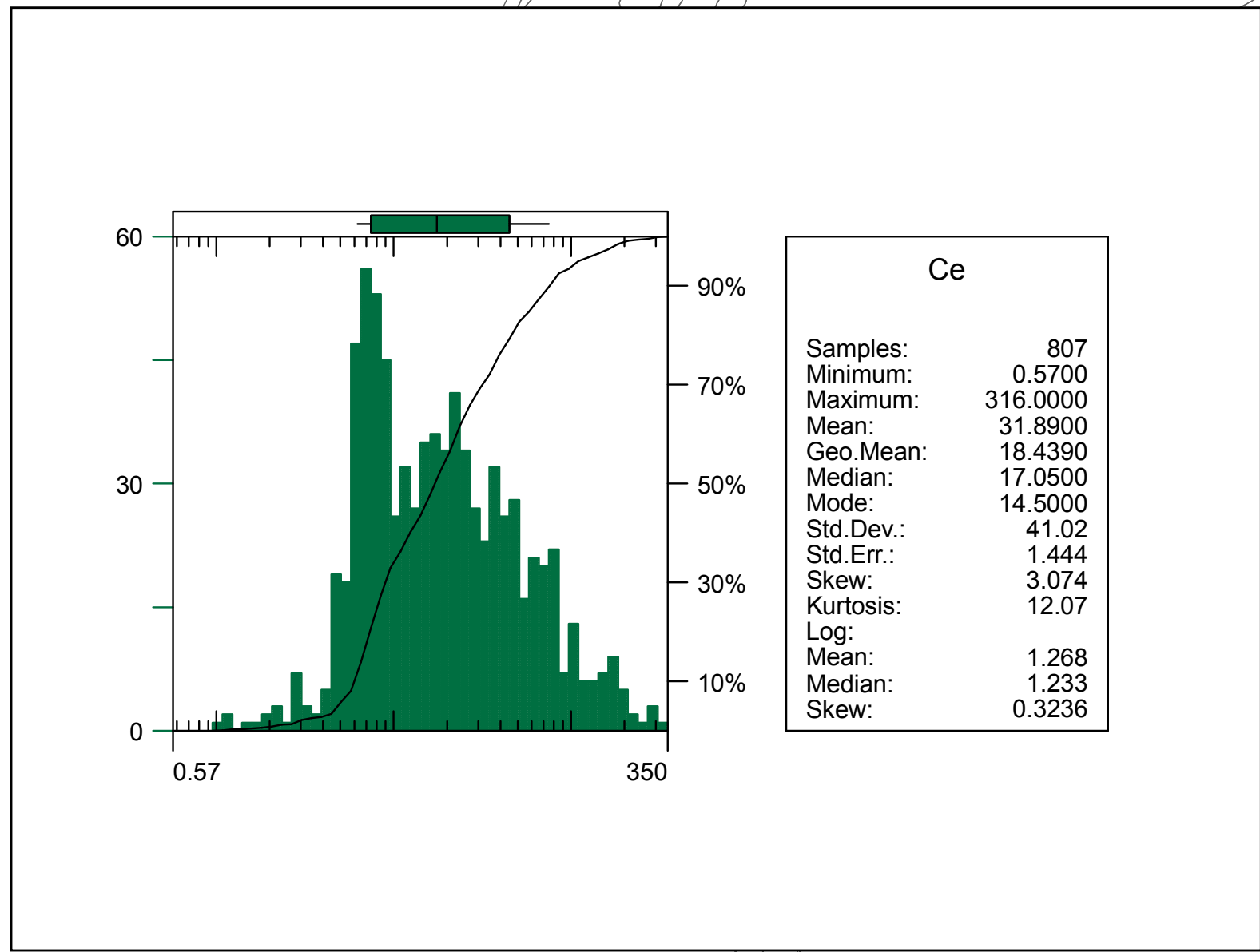
- Tasiast-Tijirit region sub-areas
- Geologic formation contact

Samples with no matching chemistry

- Rock (885 samples)

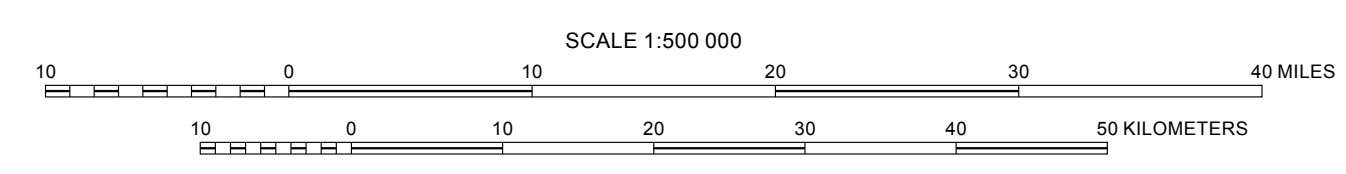
Rock samples - Cerium

- No Ce analysis (429 samples)
- 0.57 - 3.2 ppm (<2.5th percentile)
- 3.38 - 4.93 ppm (2.5 - 5th percentile)
- 4.94 - 6.08 ppm (5 - 10th percentile)
- 6.09 - 8.07 ppm (10 - 25th percentile)
- 8.08 - 38.3 ppm (25 - 75th percentile)
- 38.4 - 75.8 ppm (75 - 90th percentile)
- 76.0 - 108.0 ppm (90 - 95th percentile)
- 111.0 - 162.0 ppm (95 - 97.5th percentile)
- 162.5 - 206.0 ppm (97.5 - 99th percentile)
- 207.0 - 316.0 ppm (>99th percentile)



Transverse Mercator projection, WGS 84 Datum
Scale factor 0.9996; Longitude of central meridian 11° W; latitude of origin 0°

APPROXIMATE MEAN DECLINATION, 2007



This map was produced as part of the "Second Projet de Renforcement Institutionnel du Secteur Minier (PRISM II)" co-financed by the Government of Mauritania and the World Bank (Credit No. IDA-38100 MAU).