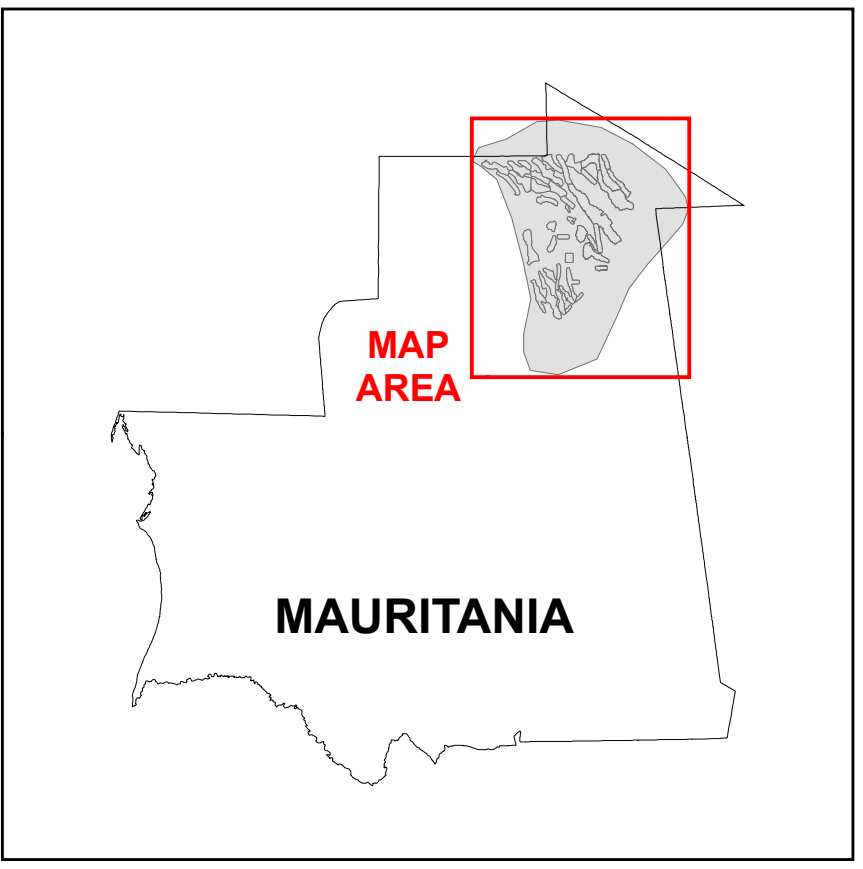
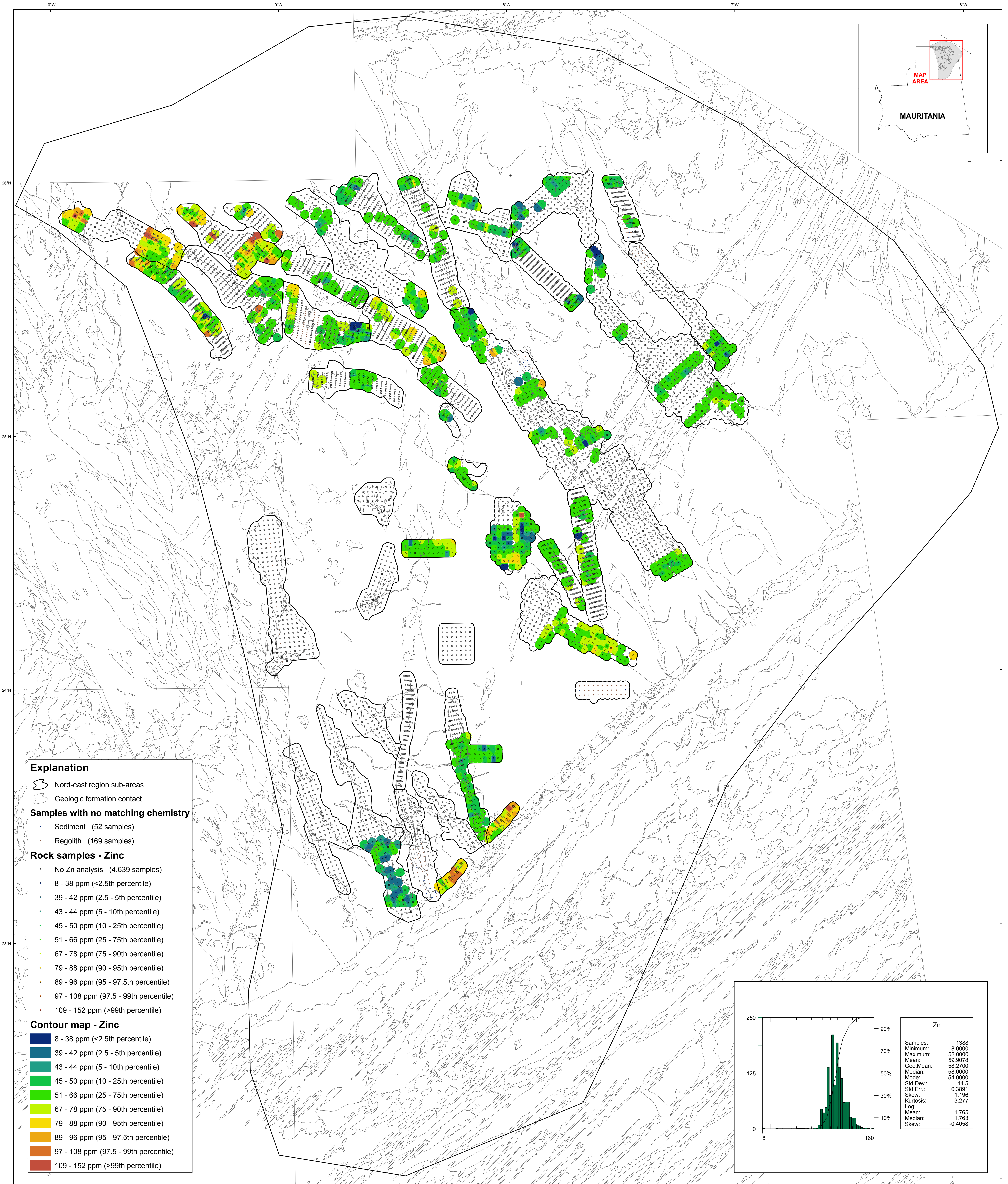


Géochimie des Matériaux Non-Consolidés Dans la Région Nord-Est — Zinc



- Explanation**
- Nord-east region sub-areas
 - Geologic formation contact
- Samples with no matching chemistry**
- Sediment (52 samples)
 - Regolith (169 samples)
- Rock samples - Zinc**
- No Zn analysis (4,639 samples)
 - 8 - 38 ppm (<2.5th percentile)
 - 39 - 42 ppm (2.5 - 5th percentile)
 - 43 - 44 ppm (5 - 10th percentile)
 - 45 - 50 ppm (10 - 25th percentile)
 - 51 - 66 ppm (25 - 75th percentile)
 - 67 - 78 ppm (75 - 90th percentile)
 - 79 - 88 ppm (90 - 95th percentile)
 - 89 - 96 ppm (95 - 97.5th percentile)
 - 97 - 108 ppm (97.5 - 99th percentile)
 - 109 - 152 ppm (>99th percentile)
- Contour map - Zinc**
- 8 - 38 ppm (<2.5th percentile)
 - 39 - 42 ppm (2.5 - 5th percentile)
 - 43 - 44 ppm (5 - 10th percentile)
 - 45 - 50 ppm (10 - 25th percentile)
 - 51 - 66 ppm (25 - 75th percentile)
 - 67 - 78 ppm (75 - 90th percentile)
 - 79 - 88 ppm (90 - 95th percentile)
 - 89 - 96 ppm (95 - 97.5th percentile)
 - 97 - 108 ppm (97.5 - 99th percentile)
 - 109 - 152 ppm (>99th percentile)

