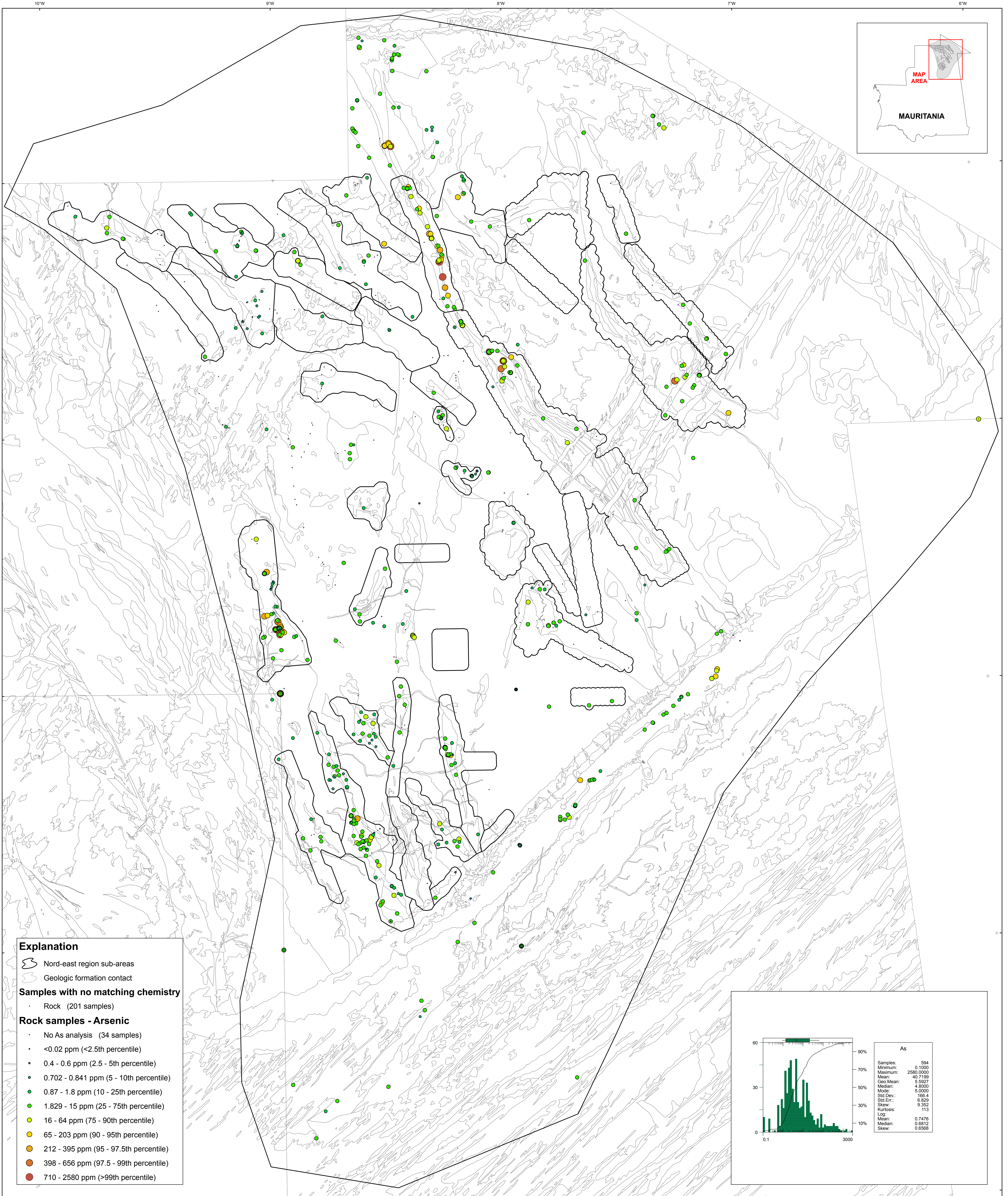


Ministère du Pétrole, de l'Énergie et des Mines
Géochimie des Roches Dans la Région Nord-Est — Arsenic



Explanation

- Nord-east region sub-areas
- Geologic formation contact

Samples with no matching chemistry

- Rock (201 samples)

Rock samples - Arsenic

- No As analysis (34 samples)
- <0.02 ppm (<2.5th percentile)
- 0.4 - 0.6 ppm (2.5 - 5th percentile)
- 0.702 - 0.841 ppm (5 - 10th percentile)
- 0.87 - 1.8 ppm (10 - 25th percentile)
- 1.829 - 15 ppm (25 - 75th percentile)
- 16 - 64 ppm (75 - 90th percentile)
- 65 - 203 ppm (90 - 95th percentile)
- 212 - 395 ppm (95 - 97.5th percentile)
- 398 - 656 ppm (97.5 - 99th percentile)
- 710 - 2580 ppm (>99th percentile)

