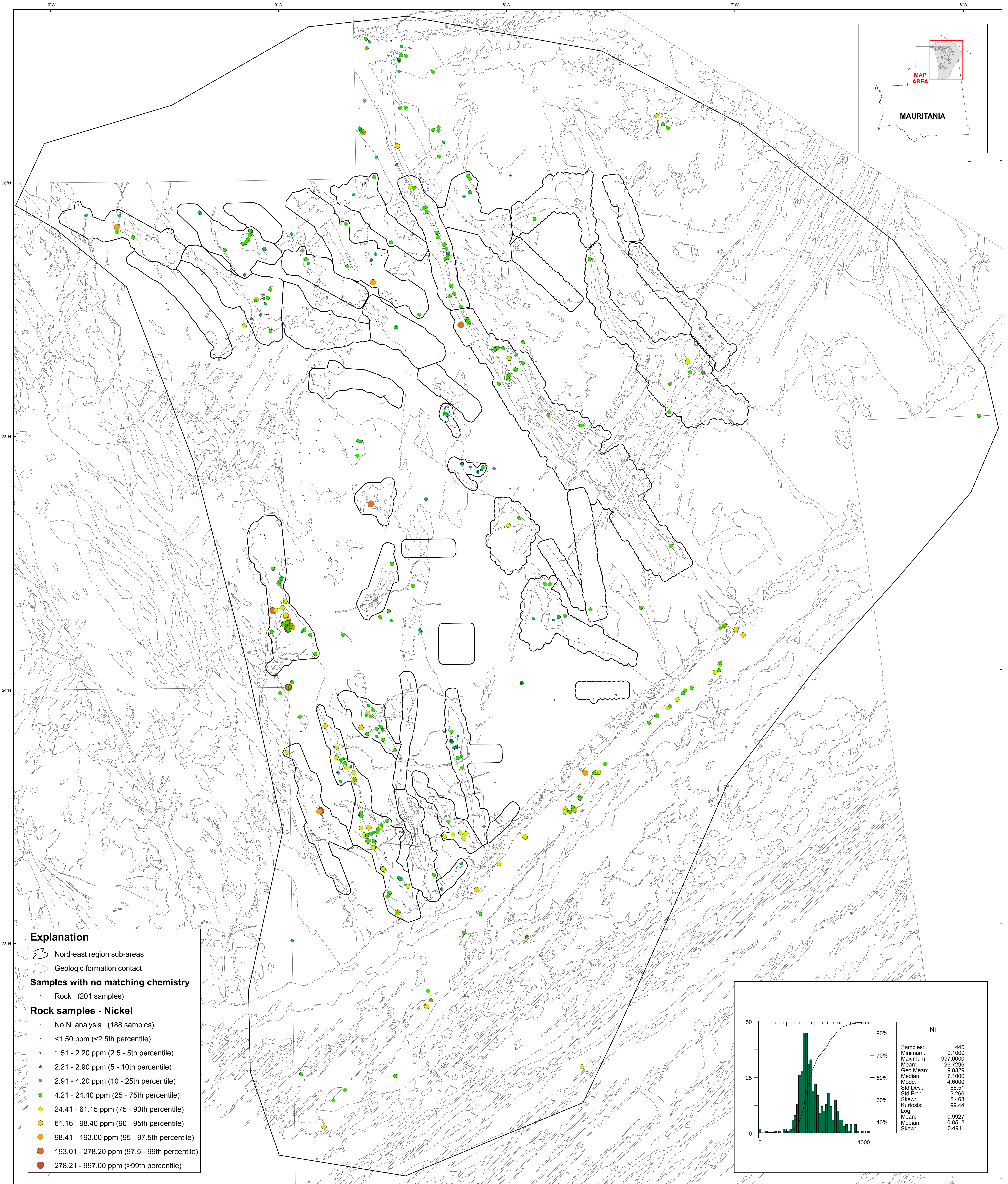


Ministère du Pétrole, de l'Énergie et des Mines
Géochimie des Roches Dans la Région Nord-Est — Nickel



Explanation

- Nord-east region sub-areas
- Geologic formation contact

Samples with no matching chemistry

- Rock (201 samples)

Rock samples - Nickel

- No Ni analysis (188 samples)
- <1.50 ppm (<2.5th percentile)
- 1.51 - 2.20 ppm (2.5 - 5th percentile)
- 2.21 - 2.90 ppm (5 - 10th percentile)
- 2.91 - 4.20 ppm (10 - 25th percentile)
- 4.21 - 24.40 ppm (25 - 75th percentile)
- 24.41 - 61.15 ppm (75 - 90th percentile)
- 61.16 - 98.40 ppm (90 - 95th percentile)
- 98.41 - 193.00 ppm (95 - 97.5th percentile)
- 193.01 - 278.20 ppm (97.5 - 99th percentile)
- 278.21 - 997.00 ppm (>99th percentile)

