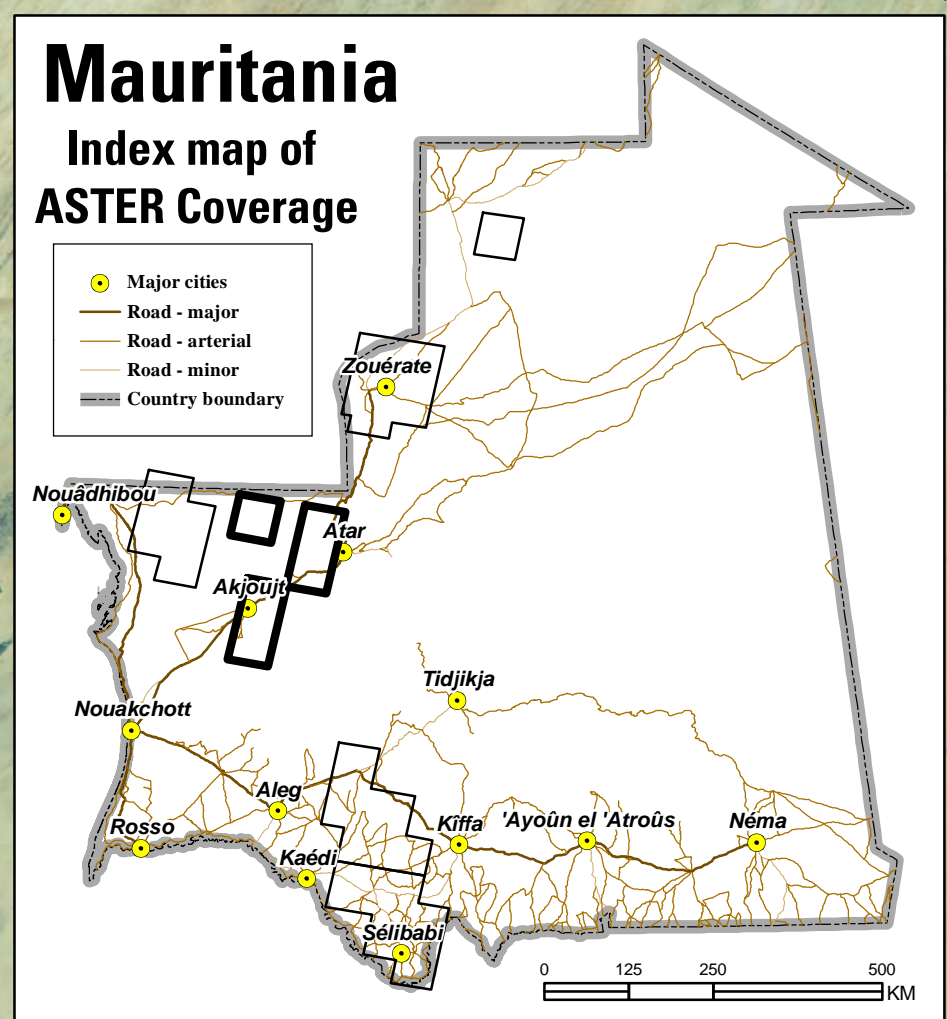


Area 2 - Inchiri-Adrar-Amsaga - ASTER DEM

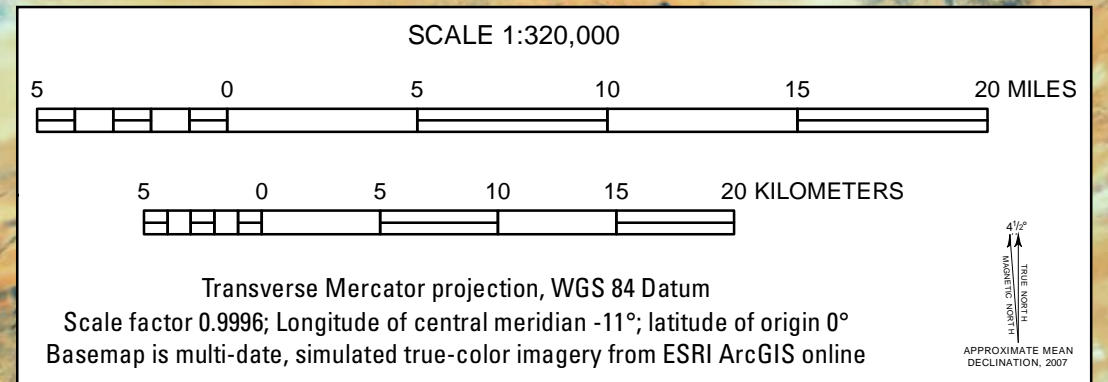
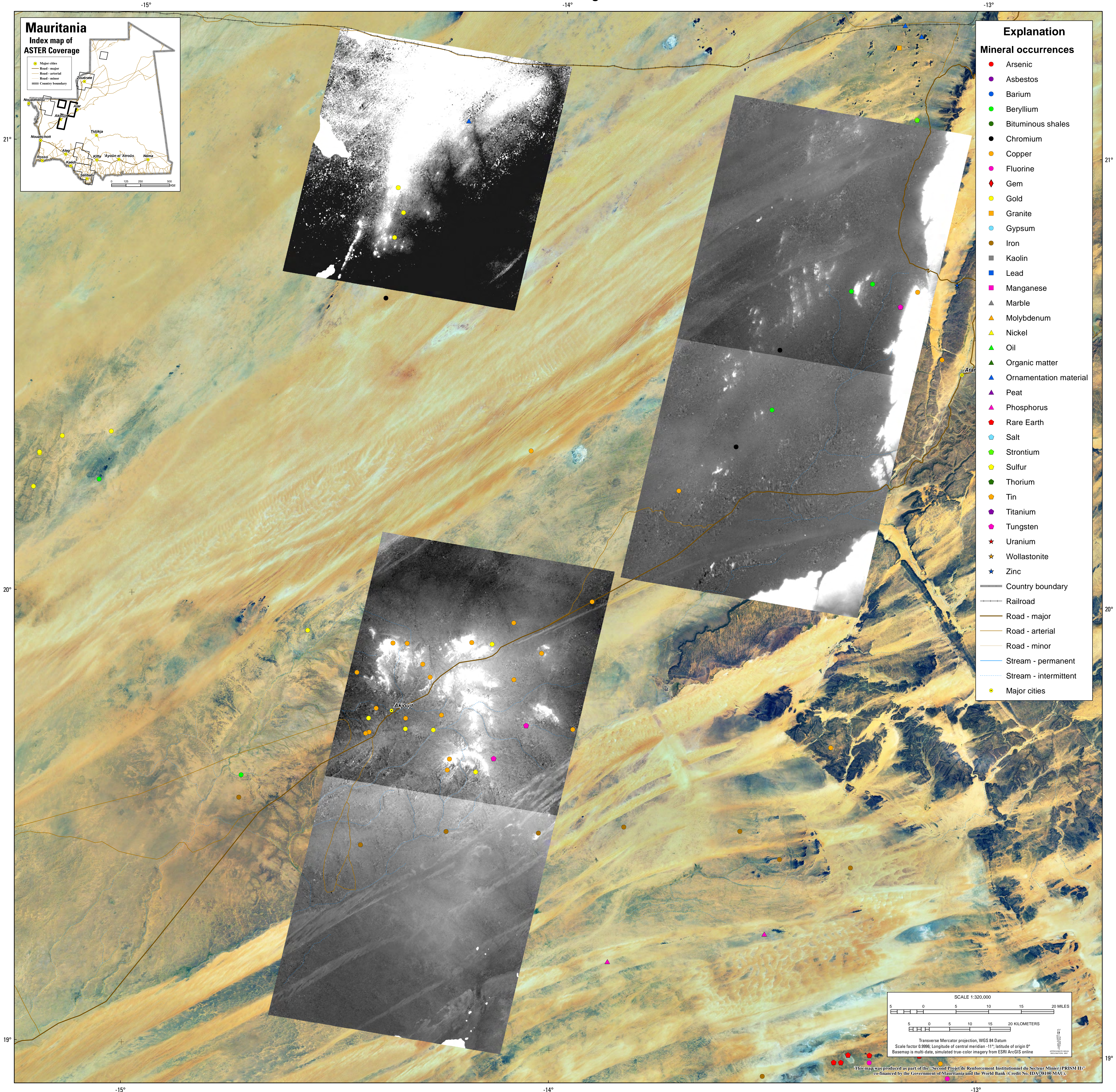
2012



Explanation

Mineral occurrences

- Arsenic
- Asbestos
- Barium
- Beryllium
- Bituminous shales
- Chromium
- Copper
- Fluorine
- ◆ Gem
- Gold
- Granite
- Gypsum
- Iron
- Kaolin
- Lead
- Manganese
- ▲ Marble
- ▲ Molybdenum
- ▲ Nickel
- ▲ Oil
- ▲ Organic matter
- ▲ Ornamentation material
- ▲ Peat
- ▲ Phosphorus
- Rare Earth
- Salt
- Strontium
- Sulfur
- Thorium
- Tin
- Titanium
- Tungsten
- ★ Uranium
- ★ Wollastonite
- ★ Zinc
- Country boundary
- Railroad
- Road - major
- Road - arterial
- Road - minor
- Stream - permanent
- Stream - intermittent
- Major cities



This map was produced as part of the "Second Projet de Renforcement Institutionnel du Secteur Minier (PRISM II)" co-financed by the Government of Mauritania and the World Bank (Credit No. IDA/38100 MAU).